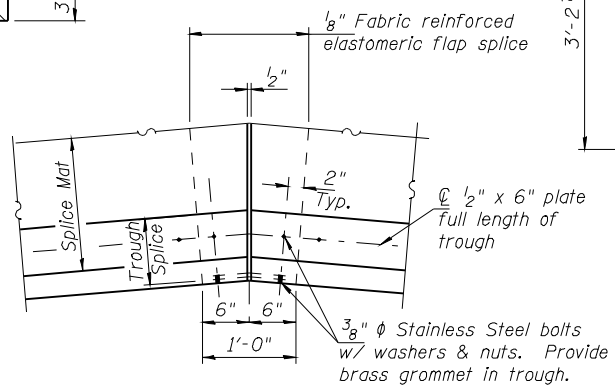
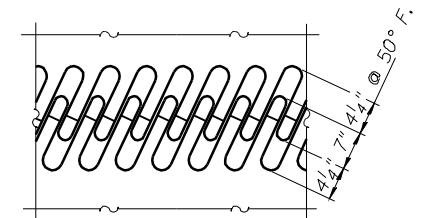


SECTION THRU STOOL

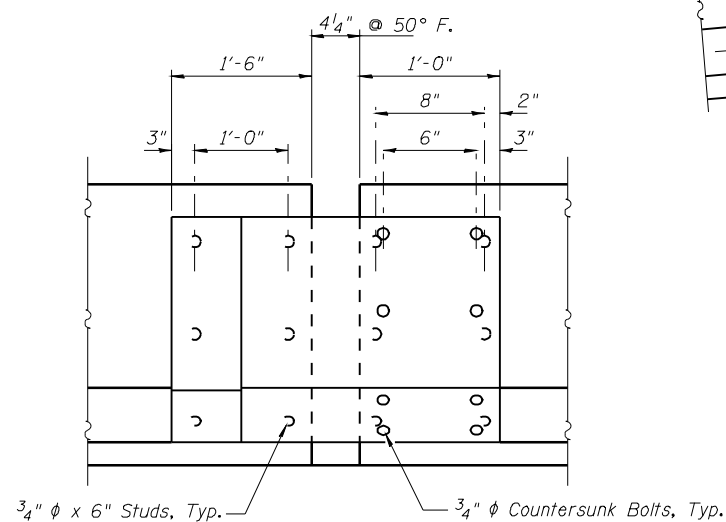


FINGER PLATE SETTING DIAGRAM

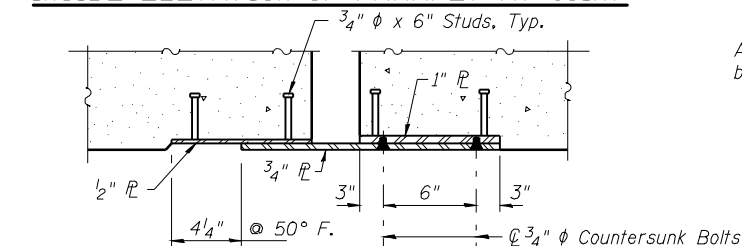


NOTES:

1. Work this sheet with Sheet 36 of 86.
2. Provide  $1\text{-}\frac{1}{4}$ ",  $1\text{-}\frac{1}{8}$ " and  $1\text{-}\frac{1}{16}$ " shim plates for stools supported by girders and cross frames.



SECTION THRU TROUGH SPLICE



**END OF TROUGH DETAIL AT ABUT.**

END OF TROUGH DETAIL AT ABUT.

DETAIL 1

**PUBLIC WATERS  
CASS & MASON COUNTIES  
SECTION 144 (B-1)  
STA. 913+26.00**

**STRUCTURE NUMBER 009-0510**  
PROFESSIONAL DESIGN FIRM LICENSE #184-001084

© Copyright Hanson Professional Services Inc. \$MS\_YEAR\$

Copyright Clearance Center, Inc. 222 Rosewood Drive, Danvers, MA 01923


**HANSON**
**HANSON**
**HANSON**

**Johnson Professional Services Inc.**

752026

127/109

7/27/09

LAYOUT	MM	09/12/08
DRAWN	DAB	09/30/08
REVIEWED	TEH	09/30/08