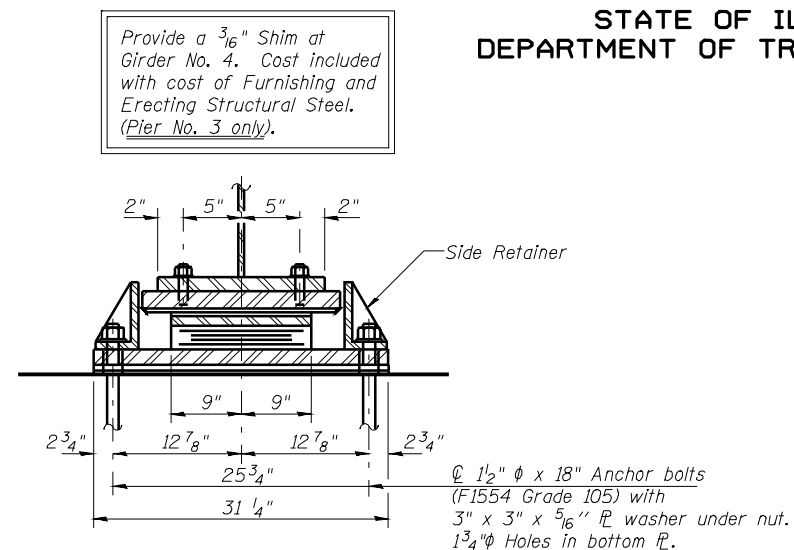
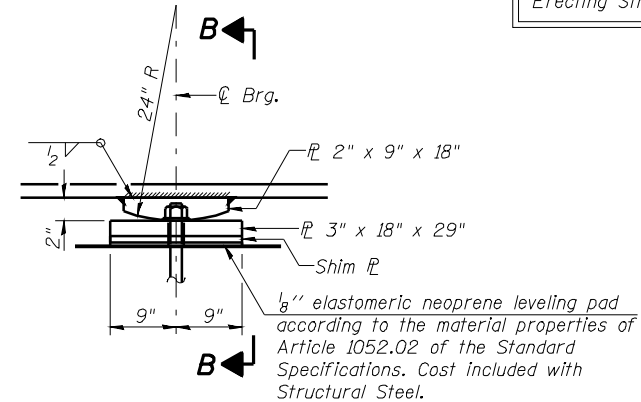


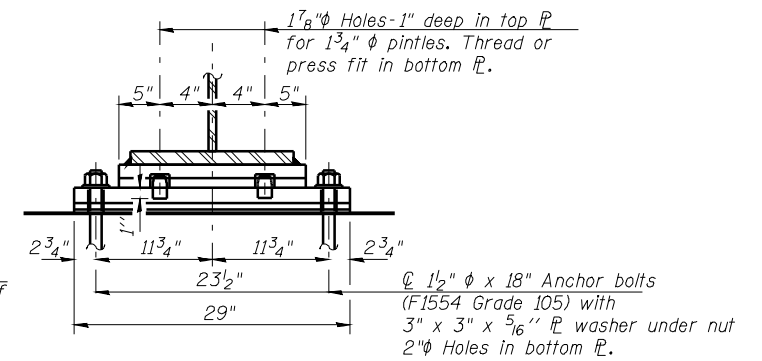
ELEVATION AT PIER



SECTION A-A

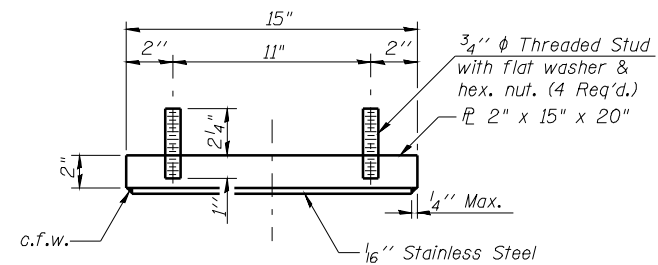


ELEVATION AT PIER

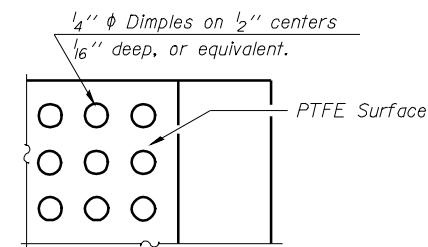


SECTION B-B

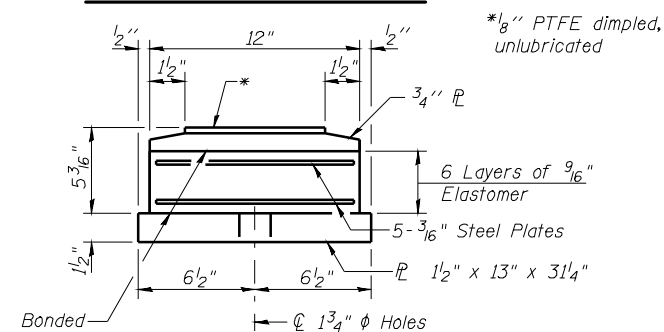
TYPE II ELASTOMERIC EXP. BRG. - PIERS 3 & 6



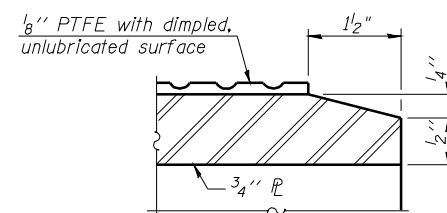
TOP BEARING ASSEMBLY



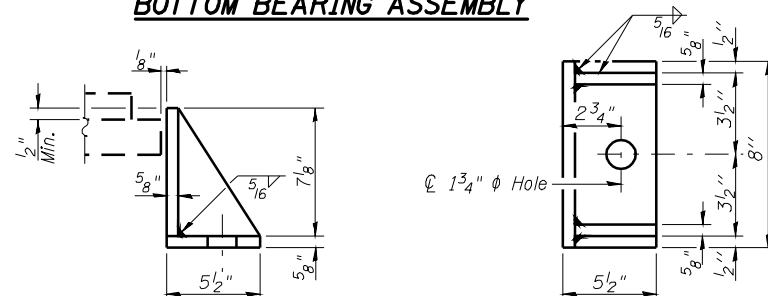
PLAN-PTFE SURFACE



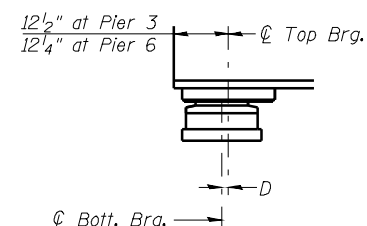
BOTTOM BEARING ASSEMBLY



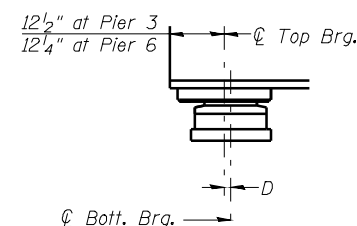
SECTION THRU PTFE



SIDE RETAINER
Equivalent rolled angle with stiffeners
will be allowed in lieu of welded plates.



BELOW 50°F.
(Move bott. brq. away from fixed brq.)

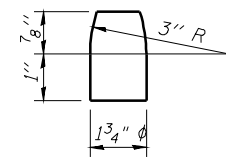


ABOVE 50°F.
(Move bott. brq. toward fixed brq.)

SETTING ANCHOR BOLTS AT EXP. BRG.

$D = \frac{1}{8}''$ per each 100' of expansion for every 15° temp. change from the normal temp. of 50°F.

FIXED BEARING - PIERS 4 & 5



PINTLE

Notes:
The anchor bolt lengths shown are the required total lengths for cast-in-place headed anchor bolts. The required total length for the sealed capsule alternate anchor bolt shall be according to the manufacturer's recommendations.

Anchor bolts shall be ASTM F1554 all-thread (or an Engineer-approved alternate material) of the grade(s) and diameter(s) specified. ASTM A307 Grade C anchor bolts may be used in lieu of ASTM F1554 Grade 36 ($F_y=36\text{ksi}$). The corresponding specified grade of AASHTO M314 anchor bolts may be used in lieu of ASTM F1554.

Anchor bolts at fixed bearings may be either cast in place or installed in holes drilled after the supported member is in place.

Anchor bolts for Type II bearings shall be placed in holes drilled through the bottom bearing plate after members are in place. Side retainers shall be placed after bolts are installed.

Drilled and set anchor bolts shall be installed according to Article 521.06 of the Standard Specifications.

Side retainers and other steel members required for the bearing assembly shall be included in the cost of Elastomeric Bearing Assembly, Type II.

The 1/8" PTFE sheet shall be bonded directly to the top steel plate with a two-component, medium viscosity epoxy resin, conforming to the requirements of the Federal Specification MMM-A-134, Type I. The bond agent shall be applied on the full area of the contact surfaces.

Bonding of $\frac{1}{8}$ " PTFE sheet during vulcanizing process will be permitted provided the process and method of adjusting assembly height is approved by the Engineer.

The structural steel plates and pintles of the Bearing Assembly shall conform to the requirements of AASHTO M270 Grade 50W.

Two 1/8" adjusting shims shall be provided for each bearing in addition to all other plates or shims and placed as shown on the bearing details.

H.S. studs in the bearing assembly shall be galvanized according to AASHTO M298 Class 50.

ELASTOMERIC & FIXED STEEL BEARING DETAILS - UNIT 2
F.A.P. 614 (IL 78) OVER SANGAMON RIVER
PUBLIC WATERS
CASS & MASON COUNTIES
SECTION 144 (B-1)
STA. 913+26.00
STRUCTURE NUMBER 009-0510

PROFESSIONAL DESIGN FIRM LICENSE #184-001084



<i>Item</i>	<i>Unit</i>	<i>Total</i>
Elastomeric Bearing Assembly, Type II	Each	12
Anchor Bolts, 1½"	Each	48

07S2026

03/27/09