

STATE OF ILLINOIS
DEPARTMENT OF TRANSPORTATION
DIVISION OF HIGHWAYS

**PROPOSED
HIGHWAY PLANS**

FAP ROUTE 658 (IL 29)
SECTION (O,E,F) I

MENARD COUNTY

C-96-088-09

F.A.P. RTE.	SECTION	COUNTY	TOTAL SHEETS	SHEET NO.
658	(O,E,F) I	MENARD	5	1
ILLINOIS		CONTRACT NO. 72C93		

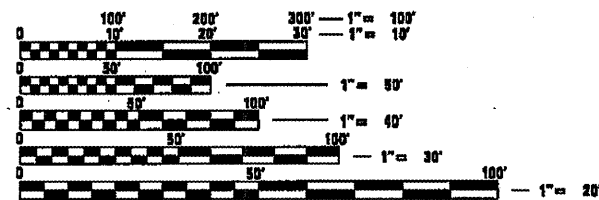
INDEX OF SHEETS

SHT NO.	DESCRIPTION
1	COVER SHEET
2	SUMMARY OF QUANTITIES
3	SCHEDULE OF QUANTITIES
	GENERAL NOTES
4-5	TYPICAL CROSS SECTIONS & ENTRANCE /SIDEROAD DETAILS

LIST OF STANDARDS

- 701001-02
- 701008-03
- 701011-02
- 701301-03
- 701326-03
- 701901-01
- 780001-02
- 781001-03

AVERAGE DAILY TRAFFIC
4,000 (2007)
PV=3,000 (75%) SU=700 (17%) MU=300 (8%)

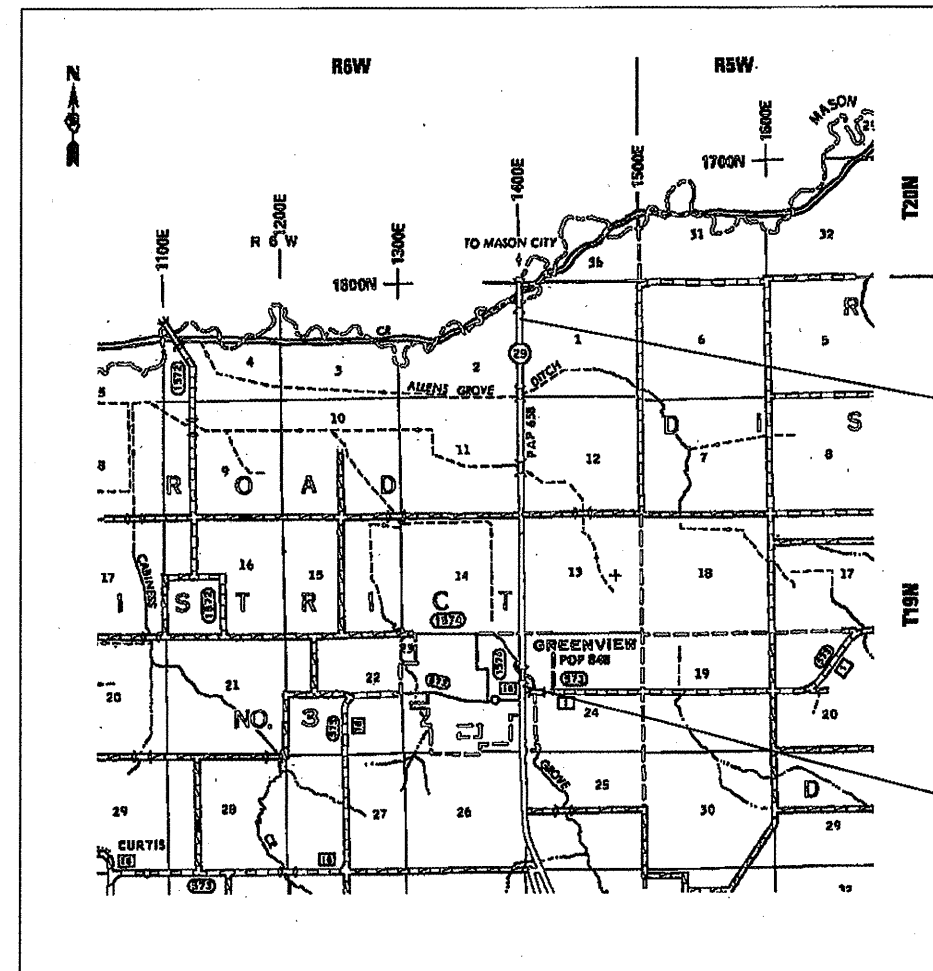


FULL SIZE PLANS HAVE BEEN PREPARED USING STANDARD ENGINEERING SCALES. REDUCED SIZED PLANS WILL NOT CONFORM TO STANDARD SCALES. IN MAKING MEASUREMENTS ON REDUCED PLANS, THE ABOVE SCALES MAY BE USED.

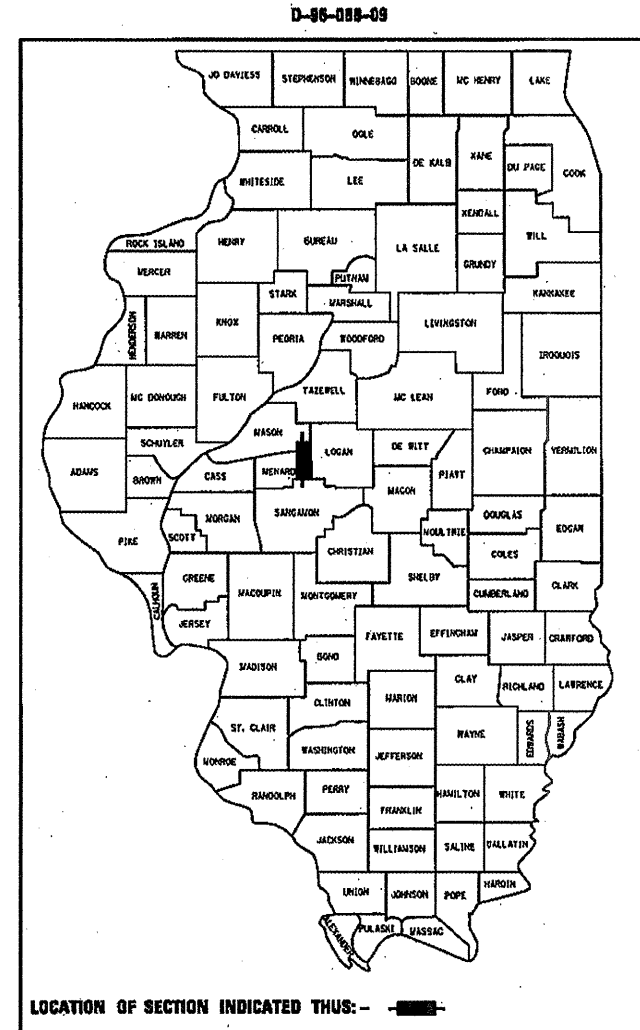
J.U.L.I.E.
JOINT UTILITY LOCATION INFORMATION FOR EXCAVATION
1-800-892-0123
OR 811

PROJECT ENGINEER: JOHN NEGANGARD (217) 782-6990
PROJECT MANAGER: MARK DUST (217) 785-0597

CONTRACT NO. 72C93



GROSS LENGTH = 15,373.95 FEET = 2.91 MILE
NET LENGTH = 15,373.95 FEET = 2.91 MILE



LOCATION OF SECTION INDICATED THUS: - [black rectangle] -

END PROJECT
ENGLISH STA 735+81.84 (BK) = APPROX.
STA 732+50.00 (AH) (STAMPED IN FIELD)
(APPROX. METRIC STA 19+777.120 (BK)
STAMPED IN FIELD)

BEGIN PROJECT
ENGLISH STA 581+87.89 =
(APPROX. METRIC STA 15+091.139
STAMPED IN FIELD)

STATE OF ILLINOIS
DEPARTMENT OF TRANSPORTATION
DIVISION OF HIGHWAYS

SUBMITTED *April 1, 2009*

Rose Z. Dundy
DEPUTY DIRECTOR OF HIGHWAYS, REGION ENGINEER

May 8, 2009
Charles J. Draessle
ENGINEER OF DESIGN AND ENVIRONMENT

May 8, 2009
Christine M. Reed
DIRECTOR OF HIGHWAYS, CHIEF ENGINEER

**PRINTED BY THE AUTHORITY
OF THE STATE OF ILLINOIS**