

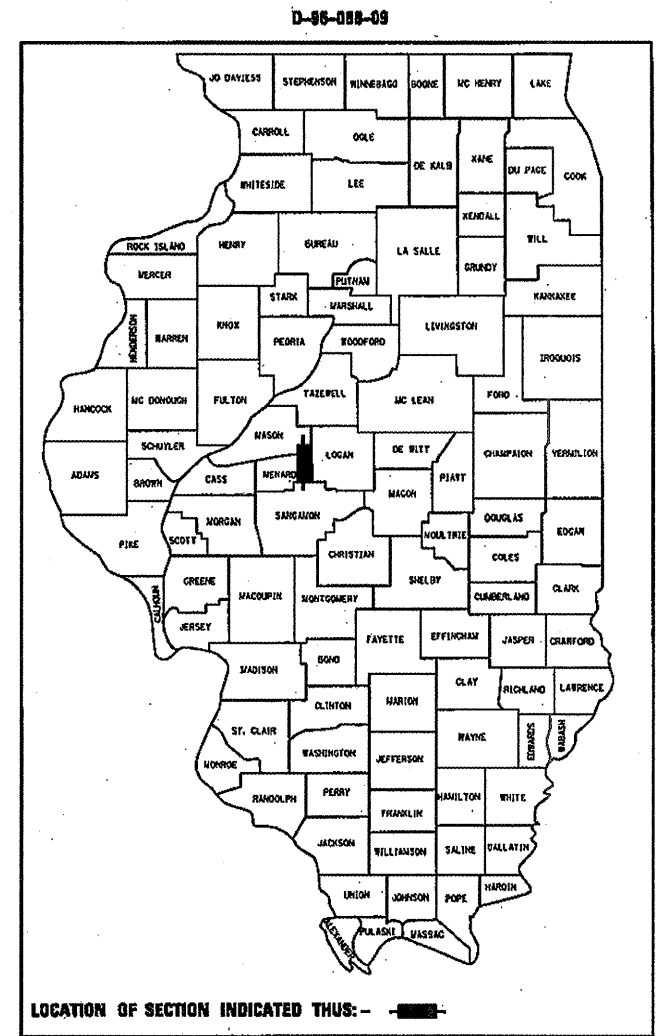
STATE OF ILLINOIS
DEPARTMENT OF TRANSPORTATION
DIVISION OF HIGHWAYS

PROPOSED
HIGHWAY PLANS

FAP ROUTE 658 (IL 29)
SECTION (O,E,F) I

MENARD COUNTY
C-96-088-09

F.A.P. RTE.	SECTION	COUNTY	TOTAL SHEETS	SHEET NO.
658	(O,E,F) I	MENARD	5	1
		ILLINOIS	CONTRACT NO. 72C93	



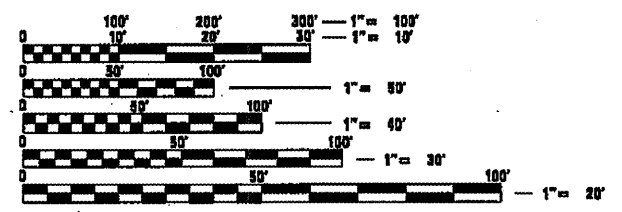
INDEX OF SHEETS

SHT NO.	DESCRIPTION
1	COVER SHEET
2	SUMMARY OF QUANTITIES
3	SCHEDULE OF QUANTITIES
	GENERAL NOTES
4-5	TYPICAL CROSS SECTIONS & ENTRANCE /SIDEROAD DETAILS

LIST OF STANDARDS

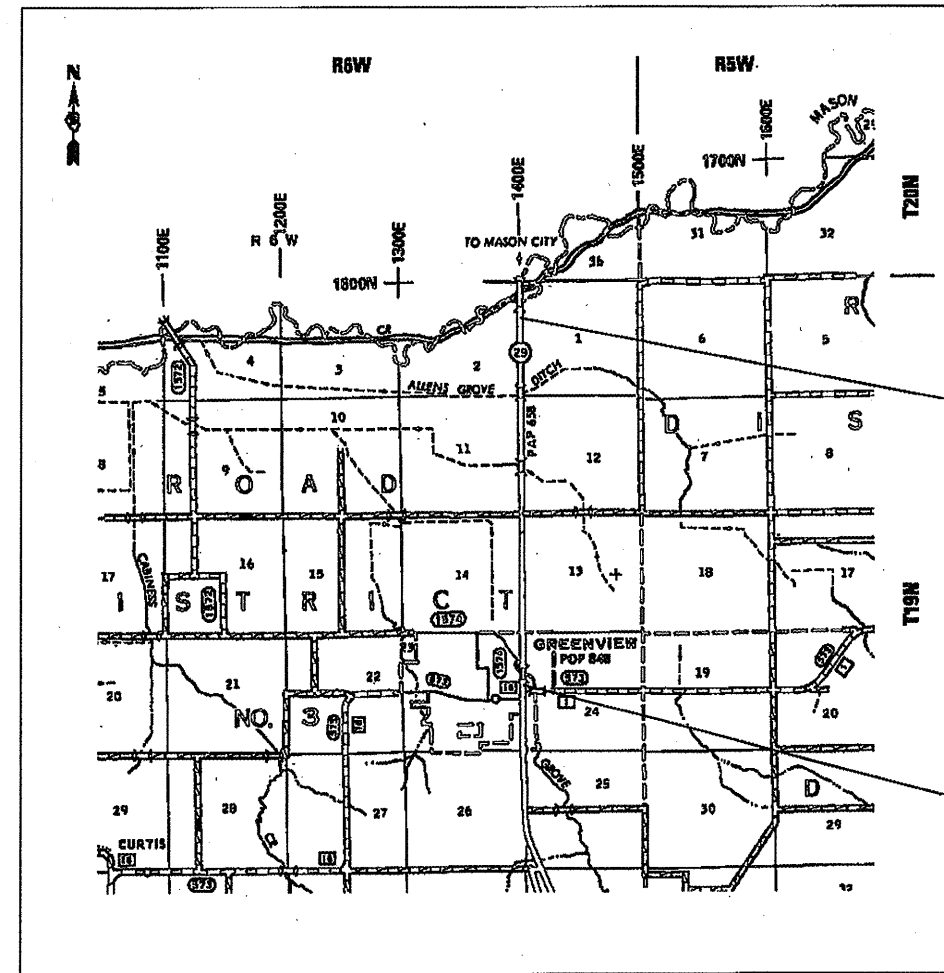
701001-02
701008-03
701011-02
701301-03
701326-03
701901-01
780001-02
781001-03

AVERAGE DAILY TRAFFIC
4,000 (2007)
 PV=3,000 (75%) SU=700 (17%) MU=300 (8%)



FULL SIZE PLANS HAVE BEEN PREPARED USING STANDARD ENGINEERING SCALES. REDUCED SIZED PLANS WILL NOT CONFORM TO STANDARD SCALES. IN MAKING MEASUREMENTS ON REDUCED PLANS, THE ABOVE SCALES MAY BE USED.

J.U.L.I.E.
 JOINT UTILITY LOCATION INFORMATION FOR EXCAVATION
 1-800-892-0123
 OR 811



END PROJECT
 ENGLISH STA 739+81.84 (BK) = APPROX
 STA 732+50.00 (AH) (STAMPED IN FIELD)
 (APPROX. METRIC STA 19+777.120 (BK)
 STAMPED IN FIELD)

BEGIN PROJECT
 ENGLISH STA 581+87.89 =
 (APPROX. METRIC STA 15+091.139
 STAMPED IN FIELD)

PROJECT ENGINEER: JOHN NEGANGARD (217) 782-6990
PROJECT MANAGER: MARK DUST (217) 785-0597

GROSS LENGTH = 15,373.95 FEET = 2.91 MILE
 NET LENGTH = 15,373.95 FEET = 2.91 MILE

CONTRACT NO. 72C93

STATE OF ILLINOIS
 DEPARTMENT OF TRANSPORTATION
 DIVISION OF HIGHWAYS

SUBMITTED *April 1 2009*
Res. Z. Dundy
 DEPUTY DIRECTOR OF HIGHWAYS, REGION ENGINEER
May 8, 2009
Charles J. Draesele
 ENGINEER OF DESIGN AND ENVIRONMENT
May 8, 2009
Christine M. Reed
 DIRECTOR OF HIGHWAYS, CHIEF ENGINEER

PRINTED BY THE AUTHORITY
OF THE STATE OF ILLINOIS

SUMMARY OF QUANTITIES				
PAY CODE	PAY ITEM DESCRIPTION	UNITS	TOTAL	100% STATE ROADWAY I000
20200600	EXCAVATING AND GRADING EXISTING SHOULDER	UNIT	307.9	307.9
48203029	HOT-MIX ASPHALT SHOULDERS, 8"	SQ YD	13,687	13,687
67100100	MOBILIZATION	L SUM	1	1
70100500	TRAFFIC CONTROL AND PROTECTION, STANDARD 701326	L SUM	1	1
*78001120	PAINT PAVEMENT MARKING - LINE 5"	FOOT	34,591	34,591

*Specialty Items

DISTRICT SIX	
EXAMINED <u>April 1</u> 20 <u>09</u>	
<i>James J. Hoare</i>	
OPERATIONS ENGINEER	
EXAMINED <u>April 1</u> 20 <u>09</u>	
<i>James J. Hoare</i>	
PROGRAM IMPLEMENTATION ENGINEER	
EXAMINED <u>April</u> 20 <u>09</u>	
<i>DRM</i>	
PROGRAM DEVELOPMENT ENGINEER	

SHOULDER SCHEDULE

LOCATION	LENGTH	WIDTH	EXCAVATING AND GRADING SHLDS	HMA SHLDS 8"
	(FOOT)	(FOOT)	(UNIT)	(SQ YD)
IL 29				
RT STA 582+00.89 TO RT STA 735+61.84	15,360.95	4.00	153.6	6,827.1
LT STA 581+87.89 TO LT STA 735+61.84	15,373.95	4.00	153.7	6,832.9
<u>SIDEROAD RADIUS</u>				
MONTGOMERY AVE (E)	30.00	4.00	0.3	13.3
MONTGOMERY AVE (W)	30.00	4.00	0.3	13.3
TOTAL =			307.9	13,686.6

GENERAL NOTES:

WHERE SECTION OR SUBSECTION MONUMENTS ARE ENCOUNTERED, THE ENGINEER SHALL BE NOTIFIED BEFORE SUCH MONUMENTS ARE REMOVED. THE CONTRACTOR SHALL PROTECT AND CAREFULLY PRESERVE ALL MONUMENTS UNTIL AN AUTHORIZED SURVEYOR OR AGENT HAS WITNESSED OR OTHERWISE REFERENCED THEIR LOCATION. THE CONTRACTOR SHALL BE RESPONSIBLE FOR HAVING AN AUTHORIZED SURVEYOR REESTABLISH ANY SECTION OR SUBSECTION MONUMENTS DESTROYED BY HIS OPERATIONS.

IN ADDITION TO FIELD SURVEYS AND AERIAL SURVEYS, PLAN DIMENSIONS AND DETAILS RELATIVE TO THE EXISTING FACILITIES HAVE BEEN TAKEN FROM EXISTING PLANS AND ARE SUBJECT TO CONSTRUCTION VARIATIONS. IT SHALL BE THE CONTRACTOR'S RESPONSIBILITY TO VERIFY SUCH DIMENSIONS AND DETAILS IN THE FIELD. SUCH VARIATIONS SHALL NOT BE A CAUSE FOR ADDITIONAL COMPENSATION DUE TO A CHANGE IN THE SCOPE OF THE WORK. HOWEVER, THE CONTRACTOR WILL BE PAID FOR THE QUANTITY ACTUALLY FURNISHED AT THE BID PRICE FOR THE WORK.

THE FOLLOWING MIXTURE REQUIREMENTS ARE APPLICABLE FOR THIS PROJECT:

LOCATION(S)
MIXTURE

USE(S)	HOT-MIX ASPHALT SHOULDER
AC/PG	
DESIGN AIR VOIDS	PG 58-22
MIXTURE COMPOSITION (GRADATION MIXTURE)	2.0% @ N DESIGN=30
FRICTION AGGREGATE	BAM
	N/A

THE CONTRACTOR SHALL BE RESPONSIBLE FOR PROTECTING UTILITY PROPERTY DURING CONSTRUCTION OPERATIONS AS OUTLINED IN ARTICLE 107.31 OF THE STANDARD SPECIFICATIONS. A MINIMUM OF 48 HOURS ADVANCE NOTICE IS REQUIRED FOR NON-EMERGENCY WORK. THE JULIE NUMBER IS 1-800-892-0123.

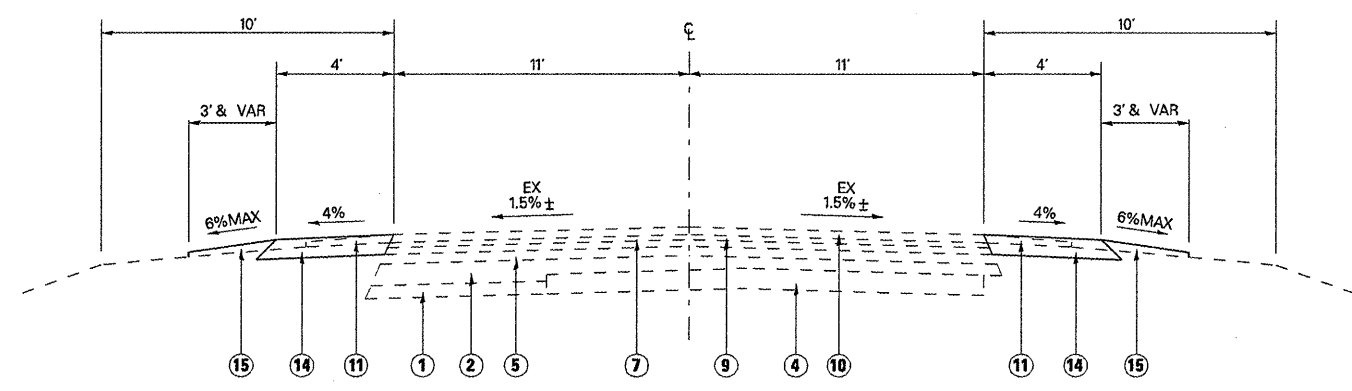
ALL ENTRANCES SHALL REMAIN ACCESSIBLE BOTH DURING AND AFTER CONSTRUCTION.

NO LANE CLOSURES WILL BE ALLOWED WITHOUT FLAGGER PROTECTION.

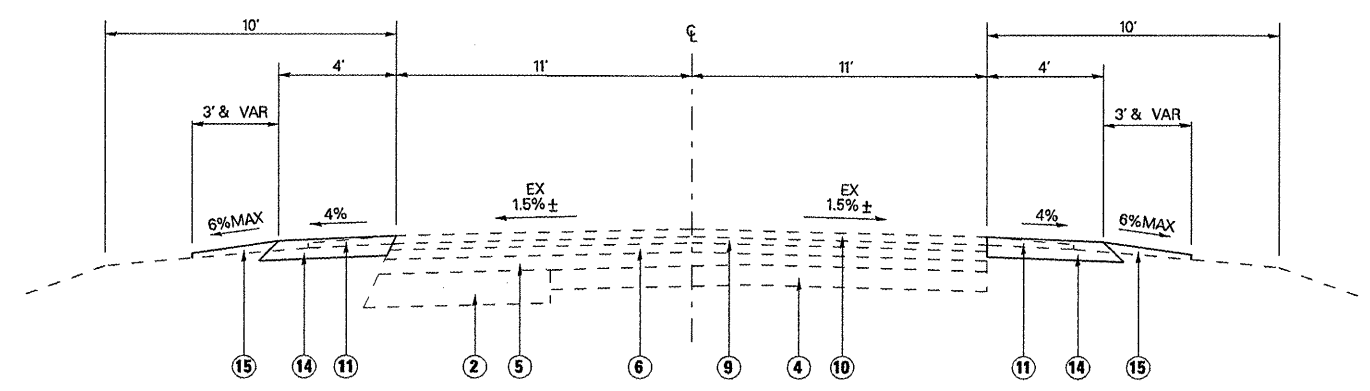
COMMITMENTS

THE FIELD/RESIDENT ENGINEER SHALL CONTACT STUDIES AND PLANS CONCERNING ANY MAJOR PLAN CHANGES TO MAKE SURE NO PREVIOUS COMMITMENTS (NOT LISTED) WERE MADE AFFECTING THE DESIGN, AND ALLOW AN IMPROVED DESIGN FOR FUTURE PROJECTS.

FILE NAME =	USER NAME = laughlinr1	DESIGNED -	REVISED -	STATE OF ILLINOIS DEPARTMENT OF TRANSPORTATION	SCHEDULE OF QUANTITIES GENERAL NOTES & COMMITMENTS				F.A.P. RTE.	SECTION	COUNTY	TOTAL SHEETS	SHEET NO.
o:\pwwork\PM1007\LAUGHLINR1\08134256\tschedule & notes.IDOT_REV.dgn		DRAWN -	REVISED -		658	(O,E,F) I	MENARD	5	3				
PLOT SCALE = 88.0000' / IN.		CHECKED -	REVISED -		CONTRACT NO. 72C93								
PLOT DATE = Apr-06-2009 09:43:15AM		DATE -	REVISED -		SCALE:	SHEET NO.	OF SHEETS	STA.	TO STA.	ILLINOIS FED. AID PROJECT			



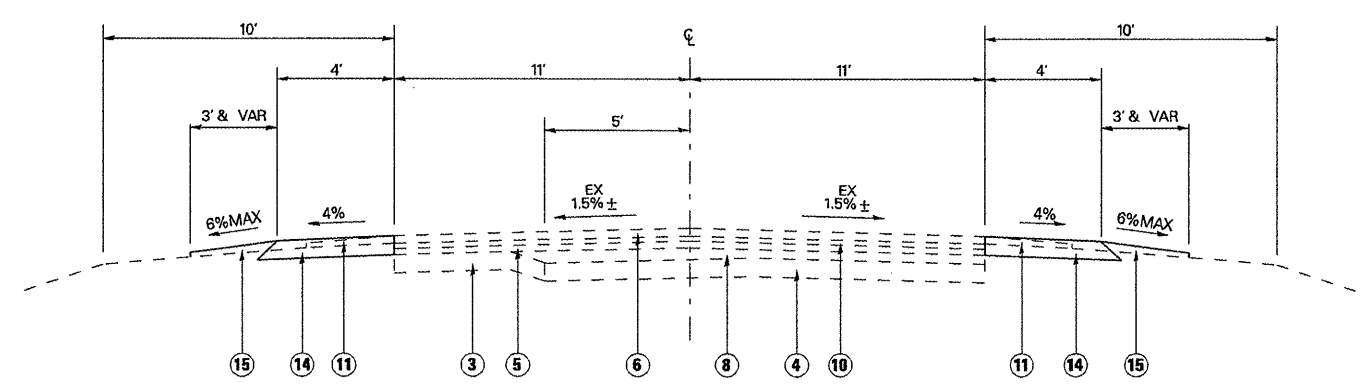
STA. 581+87.89 TO STA. 603+70.00



STA. 603+70.00 TO STA. 606+00.00
 STA. 609+44.00 TO STA. 614+09.00
 STA. 615+38.00 TO STA. 620+11.00

LEGEND

- ① EXISTING SUBBASE GRANULAR MATERIAL TYPE A 6"
- ② EXISTING GRANULAR OR CRUSHED STONE BASE COURSE, TYPE A
- ③ EXISTING P.C.C. BASE COURSE WIDENING 8"
- ④ EXISTING P.C.C. PAVEMENT 8"
- ⑤ EXISTING HMA CONC. BINDER COURSE 3 1/2"
- ⑥ EXISTING HMA CONC. BINDER COURSE 2"
- ⑦ EXISTING HMA CONC. SURFACE COURSE 1"
- ⑧ EXISTING HMA CONC. SURFACE COURSE 1 1/4"
- ⑨ EXISTING LEVELING BINDER 1/2"
- ⑩ EXISTING HMA CONC. SURFACE COURSE MIXTURE D, CLASS I, TYPE 1 1/2"
- ⑪ EXISTING AGGREGATE SHOULDER, TYPE B
- ⑫ EXISTING P.C.C. BASE COURSE 8"
- ⑬ EXISTING BITUMINOUS CONC. BINDER COURSE 1 3/4"
- ⑭ PROPOSED HOT-MIX ASPHALT SHOULDER, 8"
- ⑮ PROPOSED AGGREGATE SHOULDER (SALVAGED MATERIAL FROM EXCAVATING AND GRADING EXISTING SHOULDERS)



STA. 606+00.00 TO STA. 609+44.00
 STA. 614+09.00 TO STA. 615+38.00
 STA. 620+11.00 TO STA. 667+00.00
 STA. 692+00.00 TO STA. 700+00.00

FILE NAME =
 c:\pw_work\PWIDOT\LAUGHLINRL\d0134256\

USER NAME = laughlinr1
 USER TITLE =
 PLOT SCALE = 6.4000' / IN.
 PLOT DATE = Apr-06-2009 08:43:17AM

DESIGNED -
 DRAWN -
 CHECKED -
 DATE -

REVISED -
 REVISED -
 REVISED -
 REVISED -

**STATE OF ILLINOIS
 DEPARTMENT OF TRANSPORTATION**

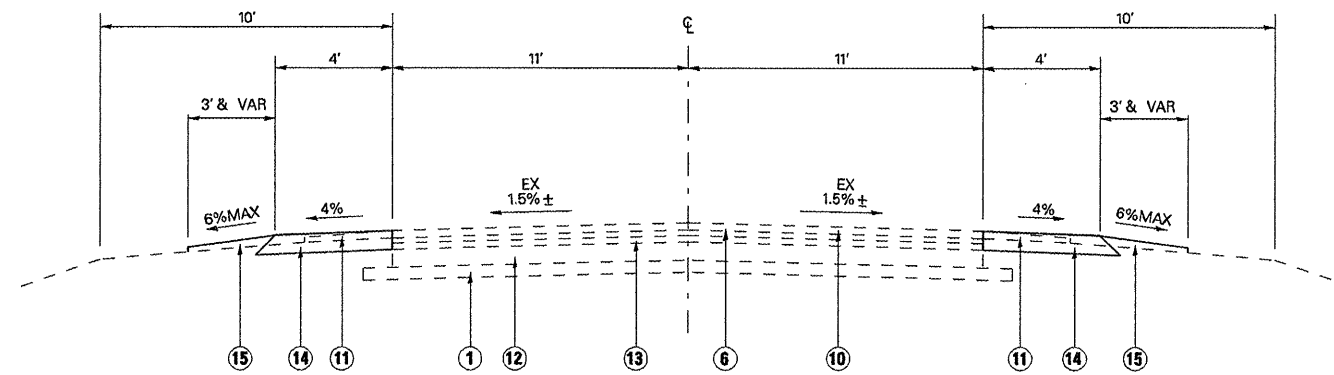
TYPICAL SECTIONS

SCALE: SHEET NO. OF SHEETS STA. TO STA.

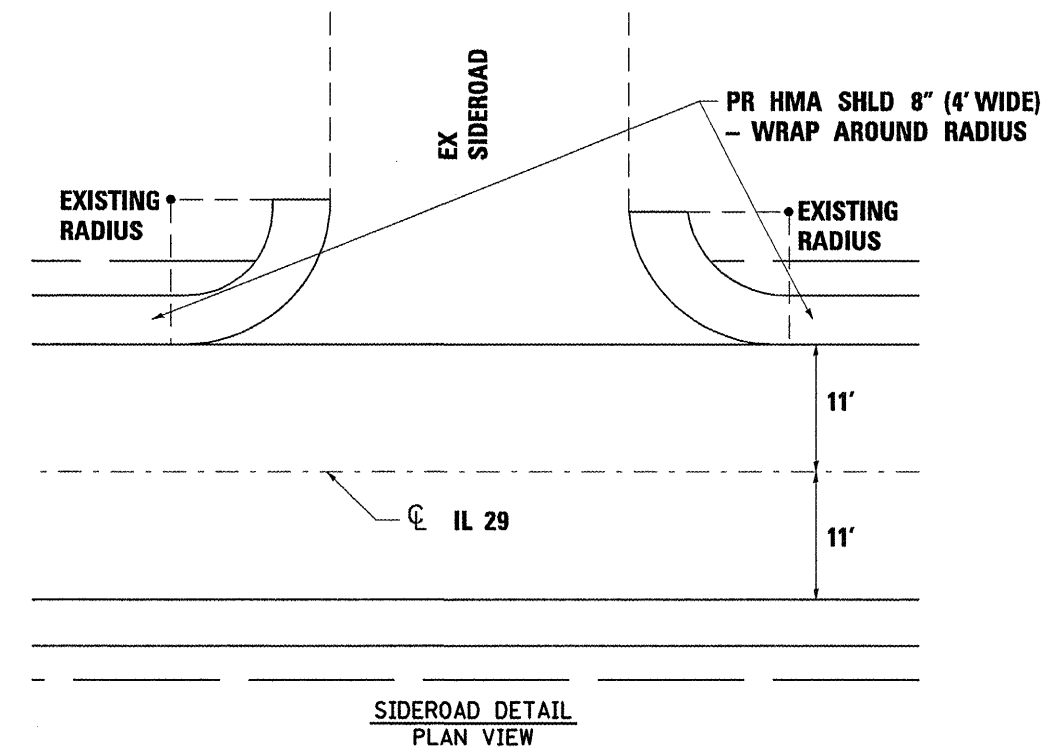
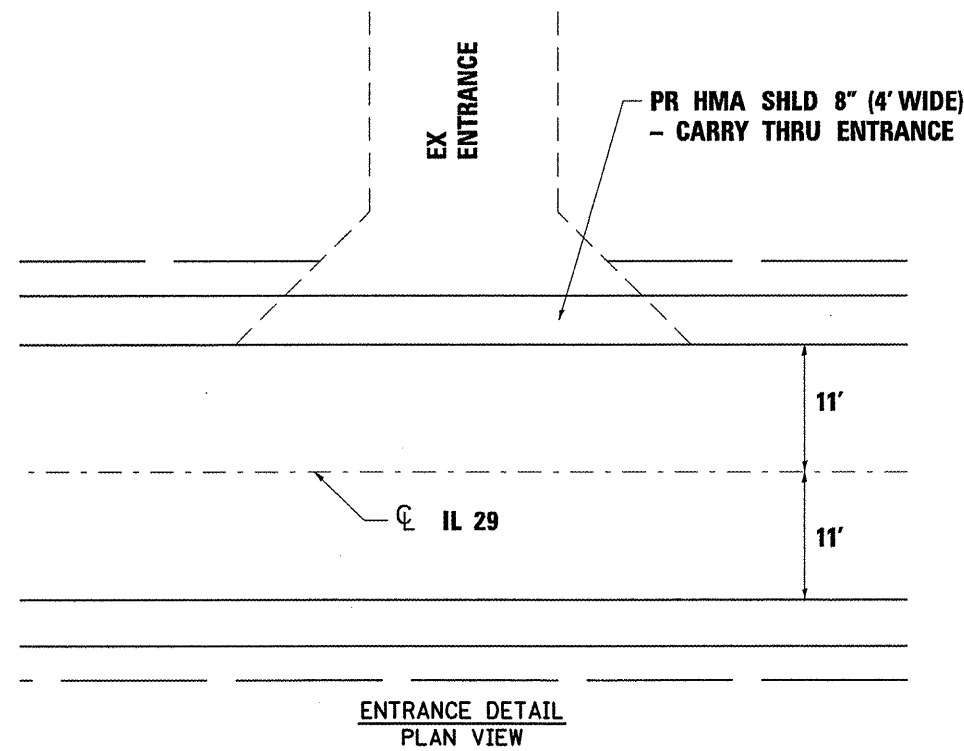
F.A.P. RTE.	SECTION	COUNTY	TOTAL SHEETS	SHEET NO.
658	(0,E,F) I	MENARD	5	4
CONTRACT NO. 72C93				
ILLINOIS FED. AID PROJECT				

LEGEND

- ① EXISTING SUBBASE GRANULAR MATERIAL TYPE A 6"
- ② EXISTING GRANULAR OR CRUSHED STONE BASE COURSE, TYPE A
- ③ EXISTING P.C.C. BASE COURSE WIDENING 8"
- ④ EXISTING P.C.C. PAVEMENT 8"
- ⑤ EXISTING HMA CONC. BINDER COURSE 3 1/2"
- ⑥ EXISTING HMA CONC. BINDER COURSE 2"
- ⑦ EXISTING HMA CONC. SURFACE COURSE 1"
- ⑧ EXISTING HMA CONC. SURFACE COURSE 1 1/4"
- ⑨ EXISTING LEVELING BINDER 1/2"
- ⑩ EXISTING HMA CONC. SURFACE COURSE MIXTURE D, CLASS I, TYPE 1 1/2"
- ⑪ EXISTING AGGREGATE SHOULDER, TYPE B
- ⑫ EXISTING P.C.C. BASE COURSE 8"
- ⑬ EXISTING BITUMINOUS CONC. BINDER COURSE 1 3/4"
- ⑭ PROPOSED HOT-MIX ASPHALT SHOULDER, 8"
- ⑮ PROPOSED AGGREGATE SHOULDER (SALVAGED MATERIAL FROM EXCAVATING AND GRADING EXISTING SHOULDERS)



STA. 667+00.00 TO STA. 692+00.00
 STA. 700+00.00 TO STA. 735+61.84 (BK) = STA EQUATION 732+50.00 (AH)



FILE NAME =	USER NAME = laughlinr1	DESIGNED -	REVISED -	STATE OF ILLINOIS DEPARTMENT OF TRANSPORTATION	TYPICAL SECTIONS & DETAILS			F.A.P. RTE.	SECTION	COUNTY	TOTAL SHEETS	SHEET NO.
c:\pwork\pwork\DOT\LAUGHLINR1\08134256	typical_IDOT_REV.dgn	DRAWN -	REVISED -					658	(O,E,F) I	MENARD	5	5
	PLOT SCALE = 6.4000' / 1IN.	CHECKED -	REVISED -		SCALE: SHEET NO. OF SHEETS STA. TO STA.			CONTRACT NO. 72C93		ILLINOIS FED. AID PROJECT		
	PLOT DATE = Apr-06-2009 08:43:28AM	DATE -	REVISED -									