

STATE OF ILLINOIS
DEPARTMENT OF TRANSPORTATION

ROUTE NO.	SECTION	COUNTY	TOTAL SHEETS	SHEET NO.
FAP 773 IL 121	(108BR-3)B-1	CUMBERLAND	96	42
FED. ROAD DIST. NO.	ILLINOIS	FED. AID PROJECT-		

Contract # 74237

SHEET NO. 7
22 SHEETS

NORTH CURB LINE

Location	Station	Offset	Theoretical Grade Elevations
End of West Appr. Pavt.	398+35.50	-16.42	570.99
M	398+45.50	-16.42	571.13
N	398+55.50	-16.42	571.28
Back of West Abut.	398+65.50	-16.42	571.43

NORTH EDGE OF PAVEMENT

Location	Station	Offset	Theoretical Grade Elevations
End of West Appr. Pavt.	398+35.50	-12.00	571.09
M	398+45.50	-12.00	571.22
N	398+55.50	-12.00	571.37
Back of West Abut.	398+65.50	-12.00	571.52

☉ ROADWAY & P.G.

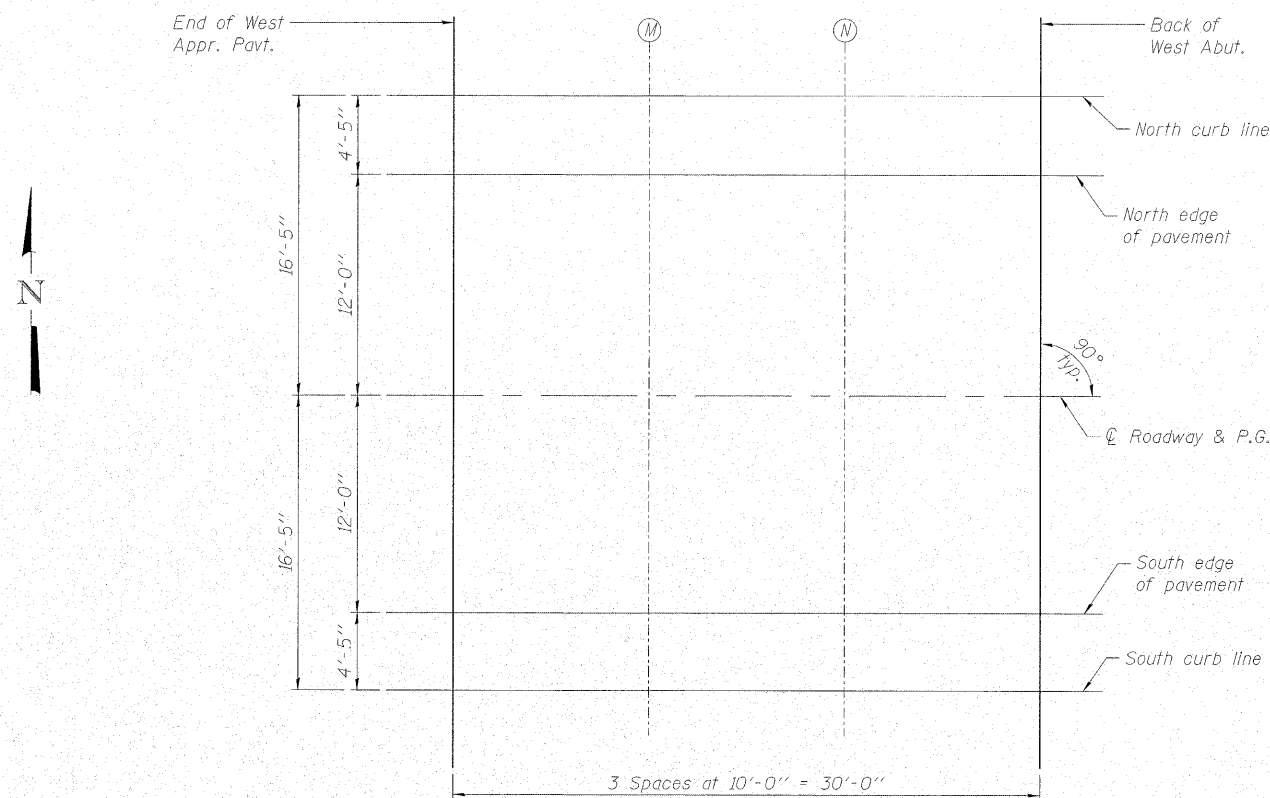
Location	Station	Offset	Theoretical Grade Elevations
End of West Appr. Pavt.	398+35.50	0.00	571.27
M	398+45.50	0.00	571.41
N	398+55.50	0.00	571.56
Back of West Abut.	398+65.50	0.00	571.71

SOUTH EDGE OF PAVEMENT

Location	Station	Offset	Theoretical Grade Elevations
End of West Appr. Pavt.	398+35.50	12.00	571.09
M	398+45.50	12.00	571.22
N	398+55.50	12.00	571.37
Back of West Abut.	398+65.50	12.00	571.52

SOUTH CURB LINE

Location	Station	Offset	Theoretical Grade Elevations
End of West Appr. Pavt.	398+35.50	16.42	570.99
M	398+45.50	16.42	571.13
N	398+55.50	16.42	571.28
Back of West Abut.	398+65.50	16.42	571.43



PLAN



DESIGNED - BAS
CHECKED - KEF
DRAWN - LAD
CHECKED - RJA

TOP OF WEST APPROACH
SLAB ELEVATIONS
IL ROUTE 121 OVER MULE CREEK
F.A.P. RTE. 773 - SECTION (108BR-3)B-1
CUMBERLAND COUNTY
STATION 399+34.00
STRUCTURE NO. 018-0062