

STATE OF ILLINOIS  
DEPARTMENT OF TRANSPORTATION

ROUTE NO.	SECTION	COUNTY	TOTAL SHEETS	SHEET NO.	SHEET NO. 8 22 SHEETS
FAP 773 IL 121	(108BR- 3)B-1	CUMBERLAND	96	43	
FED. ROAD DIST. NO.	ILLINOIS	FED. AID PROJECT			

Contract # 74237

NORTH CURB LINE

Location	Station	Offset	Theoretical Grade Elevations
Back of East Abut.	400+02.50	-16.42	574.11
O	400+12.50	-16.42	574.35
P	400+22.50	-16.42	574.59
End of East Appr. Pavt.	400+32.50	-16.42	574.85

NORTH EDGE OF PAVEMENT

Location	Station	Offset	Theoretical Grade Elevations
Back of East Abut.	400+02.50	-12.00	574.20
O	400+12.50	-12.00	574.44
P	400+22.50	-12.00	574.69
End of East Appr. Pavt.	400+32.50	-12.00	574.94

☉ ROADWAY & P.G.

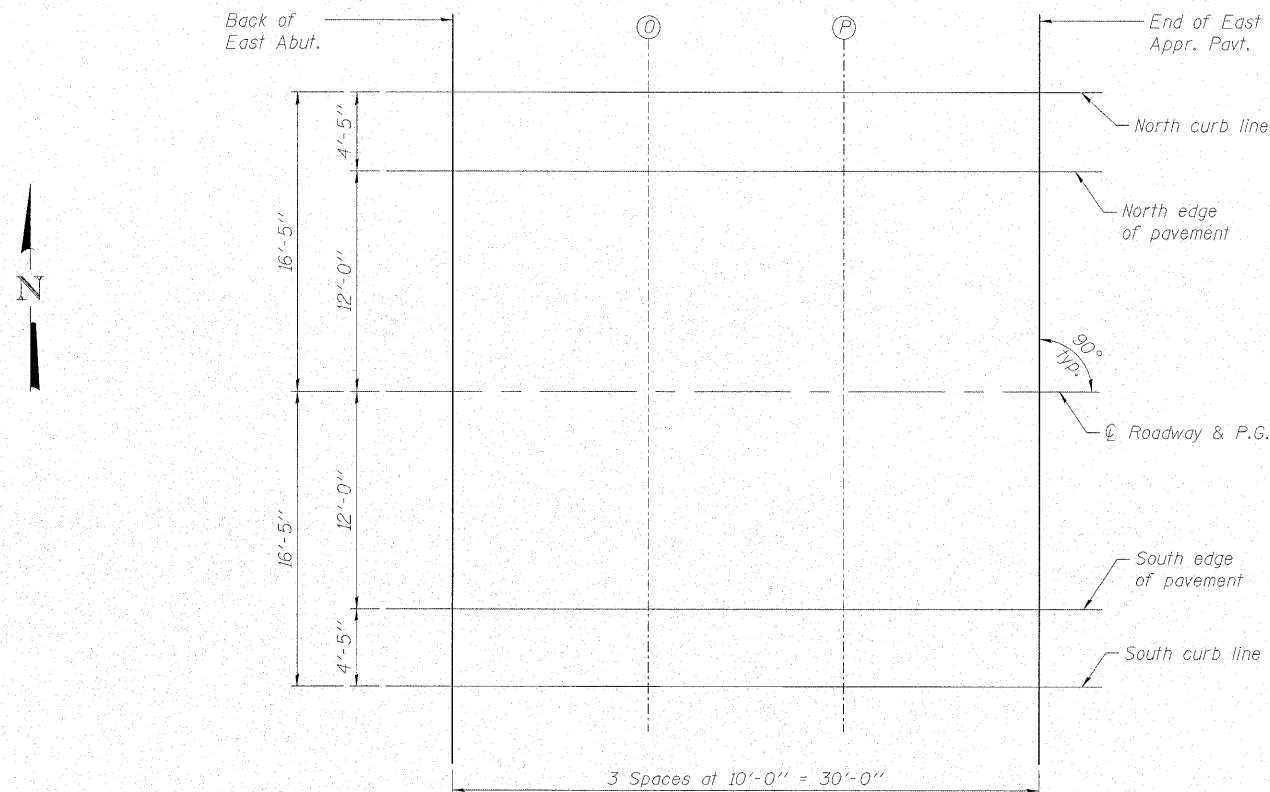
Location	Station	Offset	Theoretical Grade Elevations
Back of East Abut.	400+02.50	0.00	574.39
O	400+12.50	0.00	574.63
P	400+22.50	0.00	574.87
End of East Appr. Pavt.	400+32.50	0.00	575.13

SOUTH EDGE OF PAVEMENT

Location	Station	Offset	Theoretical Grade Elevations
Back of East Abut.	400+02.50	12.00	574.20
O	400+12.50	12.00	574.44
P	400+22.50	12.00	574.69
End of East Appr. Pavt.	400+32.50	12.00	574.94

SOUTH CURB LINE

Location	Station	Offset	Theoretical Grade Elevations
Back of East Abut.	400+02.50	16.42	574.11
O	400+12.50	16.42	574.35
P	400+22.50	16.42	574.59
End of East Appr. Pavt.	400+32.50	16.42	574.85



PLAN



DESIGNED - BAS
CHECKED - KEF
DRAWN - LAD
CHECKED - RJA

TOP OF EAST APPROACH  
SLAB ELEVATIONS  
IL ROUTE 121 OVER MULE CREEK  
F.A.P. RTE. 773 - SECTION (108BR-3)B-1  
CUMBERLAND COUNTY  
STATION 399+34.00  
STRUCTURE NO. 018-0062