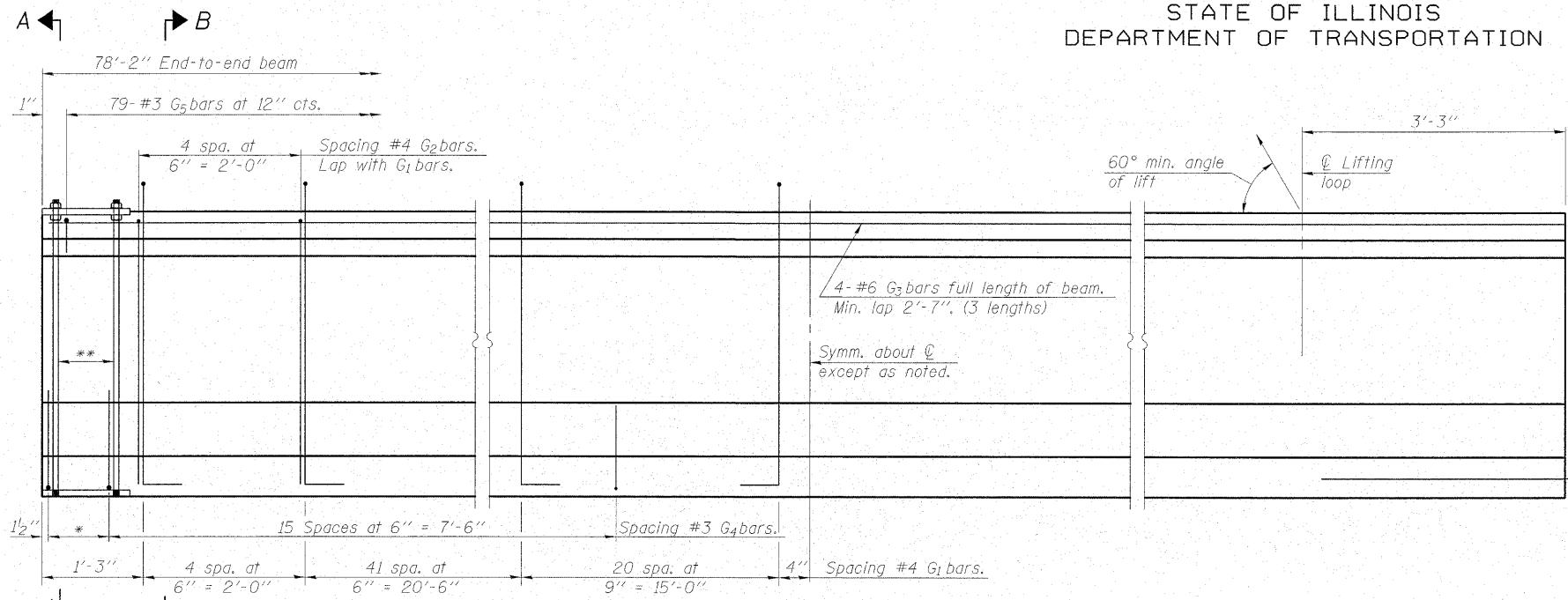


STATE OF ILLINOIS
DEPARTMENT OF TRANSPORTATION

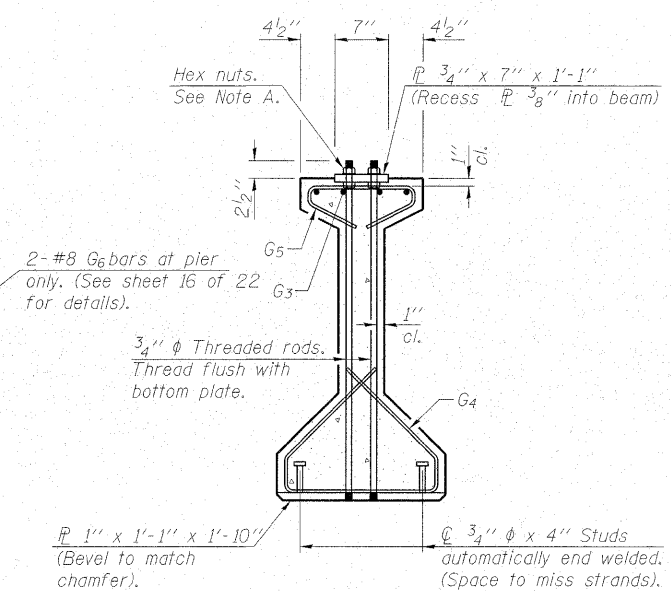
ROUTE NO.	SECTION	COUNTY	TOTAL SHEETS	SHEET NO.	SHEET NO. 14 22 SHEETS
FAP 773 IL 121	(108BR- 3)B-1	CUMBERLAND	96	49	
FED. ROAD DIST. NO.	ILL. PROJECT	FED. AID PROJECT			

Contract # 74237

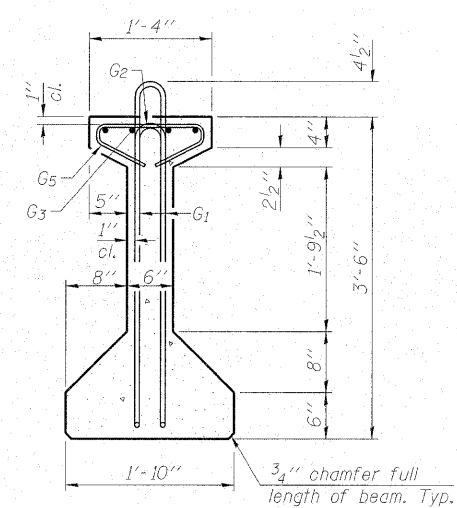


ELEVATION OF BEAM
(Showing reinforcement & dimensions)

*3 spaces at 3" = 9".
**4-3/4" φ threaded dowel rods at 3" cts., Each Face.

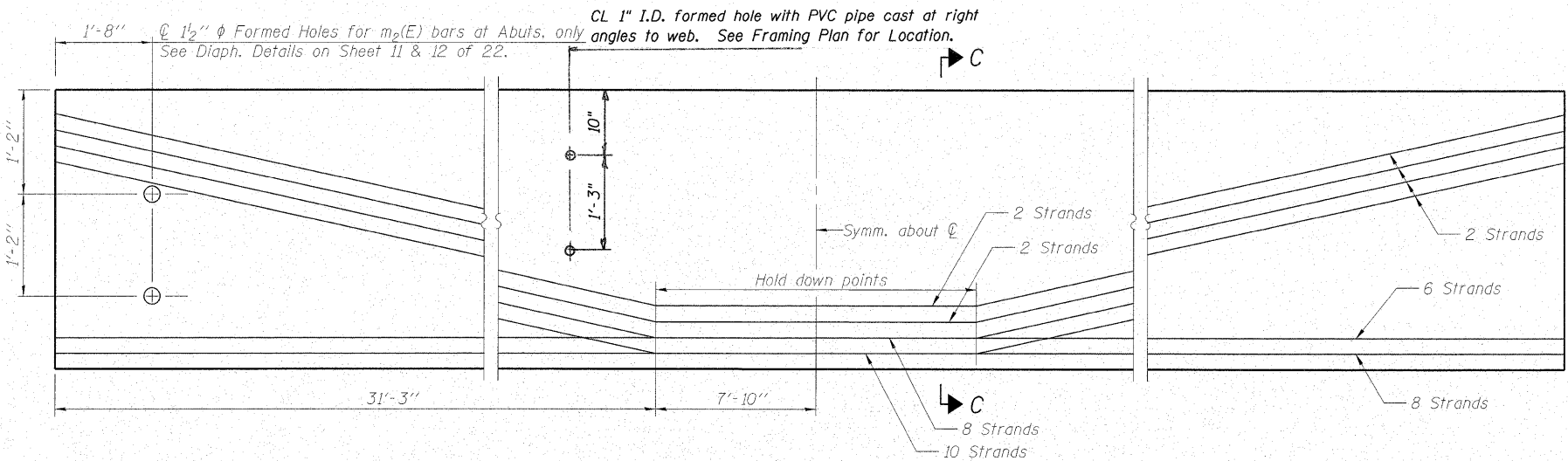


SECTION A-A

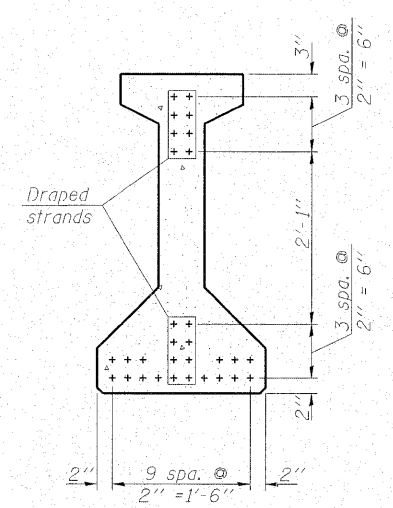


SECTION B-B

Note A:
Hex nuts (top and bottom) with lock washers (top). Only tighten sufficiently to compress lock washers.



ELEVATION OF BEAM
(Showing prestressing steel)



SECTION C-C

*****BAR LIST
ONE BEAM ONLY**

Bar	No.	Size	Length	Shape
G1	132	#4	8'-5"	∩ L
G2	10	#4	6'-8"	∩
G3	12	#6	27'-9"	—
G4	38	#3	4'-11"	∩
G5	79	#3	2'-6"	∩
G6	2	#8	3'-9"	∩

***For information only
Notes:
See sheet 16 of 22 for additional details and Bill of Material.
Required release strength, f'ci, shall be 6000 psi.

MAURER & STUTZ, INC.
ENGINEERS SURVEYORS

DESIGNED -	BAS
CHECKED -	KEF
DRAWN -	SGM
CHECKED -	RJA

42" PPC I-BEAM (SPAN 1)
IL ROUTE 121 OVER MULE CREEK
F.A.P. RTE. 773 - SECTION (108BR-3)B-1
CUMBERLAND COUNTY
STATION 399+34.00
STRUCTURE NO. 018-0062