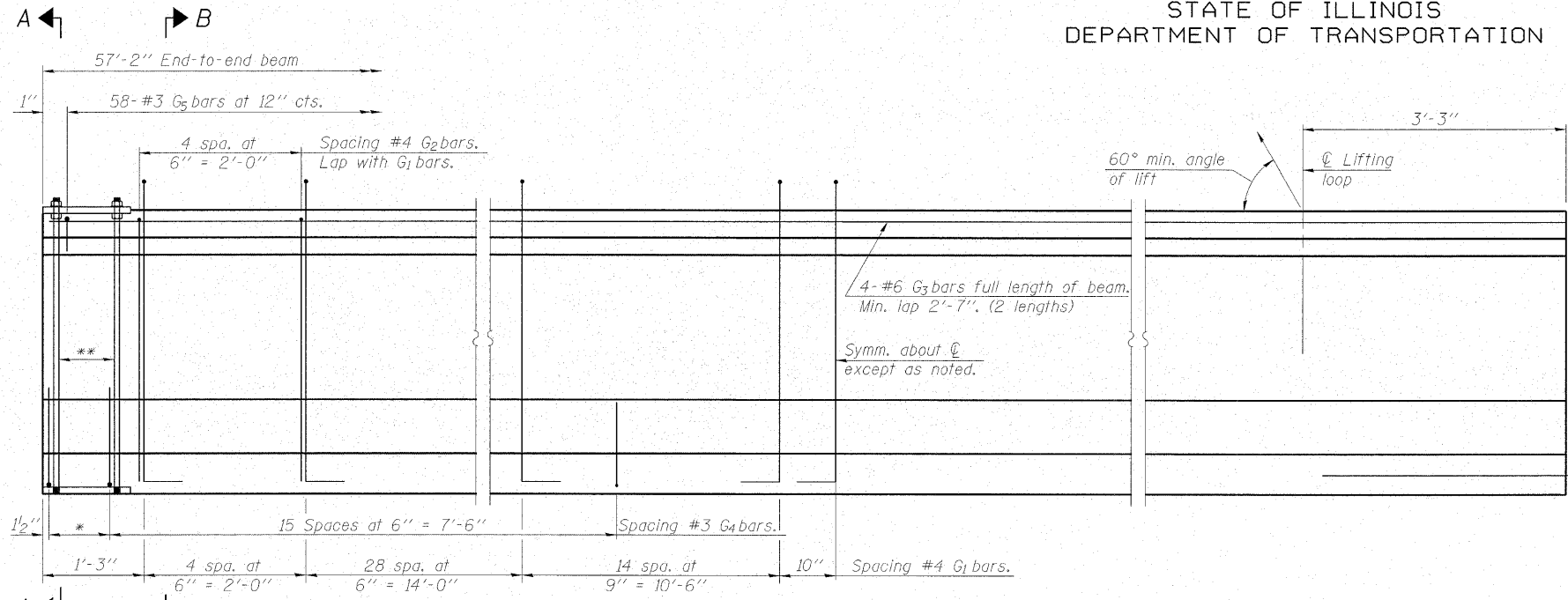


STATE OF ILLINOIS  
DEPARTMENT OF TRANSPORTATION

ROUTE NO.	SECTION	COUNTY	TOTAL SHEETS	SHEET NO.	SHEET NO. 15 22 SHEETS
FAP 773 IL 121	(108BR-3)B-1	CUMBERLAND	96	50	
FED. ROAD DIST. NO.	ILLINOIS	FED. AID PROJECT-			

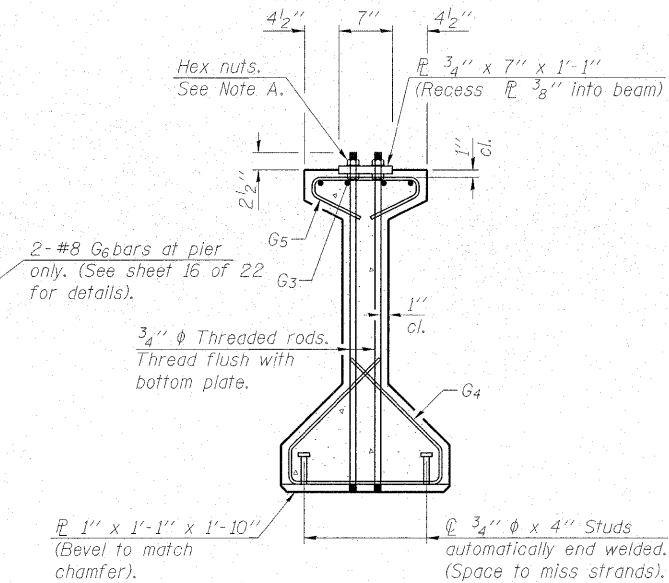
Contract # 74237



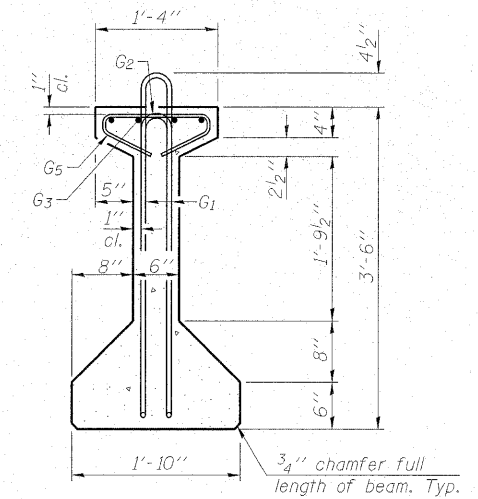
**ELEVATION OF BEAM**  
(Showing reinforcement & dimensions)

\*3 spaces at 3" = 9".  
\*\*4-3/4" φ threaded dowel rods at 3" cts., Each Face.

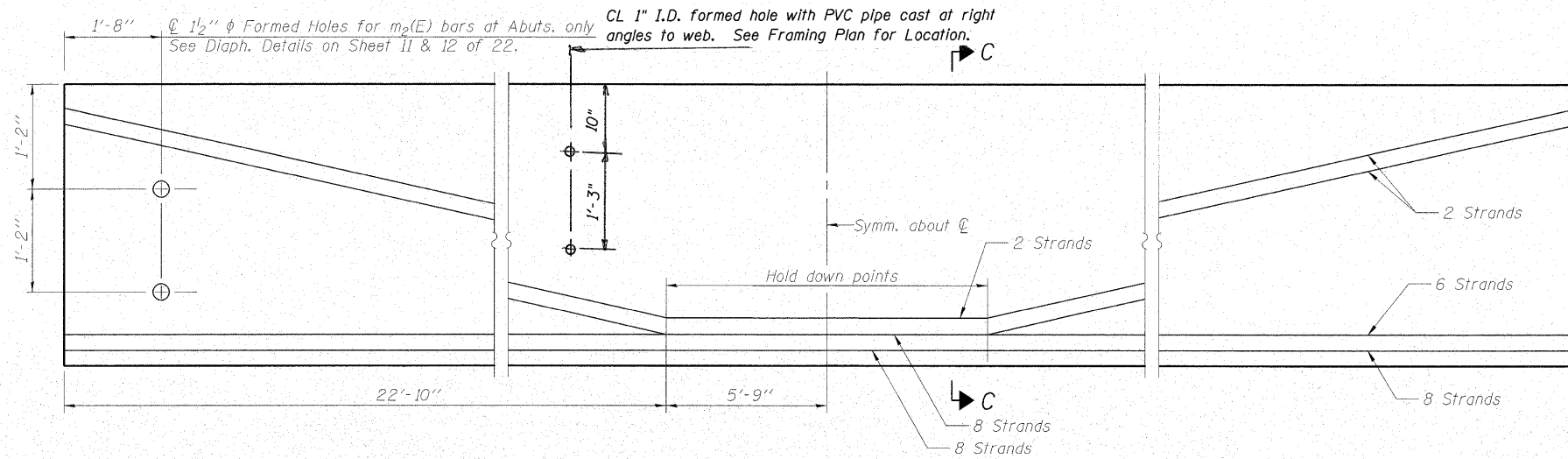
Note A:  
Hex nuts (top and bottom) with lock washers (top). Only tighten sufficiently to compress lock washers.



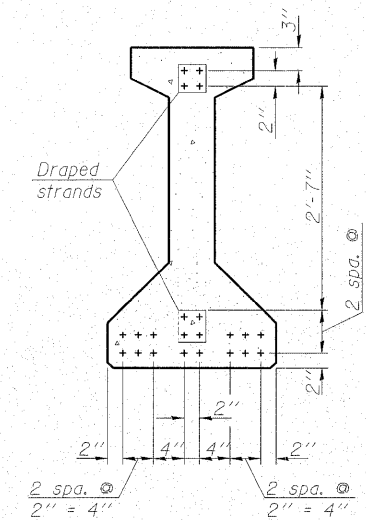
**SECTION A-A**



**SECTION B-B**



**ELEVATION OF BEAM**  
(Showing prestressing steel)



**SECTION C-C**

**\*\*\*BAR LIST  
ONE BEAM ONLY**

Bar	No.	Size	Length	Shape
G1	95	#4	8'-5"	∩ L
G2	10	#4	6'-8"	∩
G3	8	#6	29'-10"	∩
G4	38	#3	4'-11"	∩
G5	58	#3	2'-6"	∩
G6	2	#8	3'-9"	∩

\*\*\*For information only

Notes:  
See sheet 16 of 22 for additional details and Bill of Material.

Required release strength, f'ci, shall be 6000 psi.



DESIGNED - BAS
CHECKED - KEF
DRAWN - SGM
CHECKED - RJA

42" PPC I-BEAM (SPAN 2)  
IL ROUTE 121 OVER MULE CREEK  
F.A.P. RTE. 773 - SECTION (108BR-3)B-1  
CUMBERLAND COUNTY  
STATION 399+34.00  
STRUCTURE NO. 018-0062