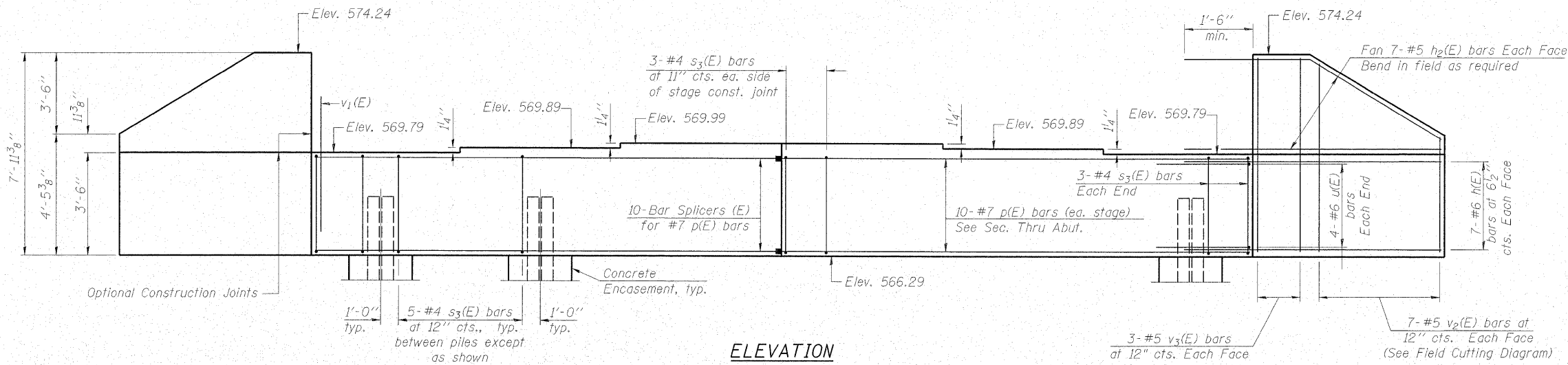


STATE OF ILLINOIS
DEPARTMENT OF TRANSPORTATION

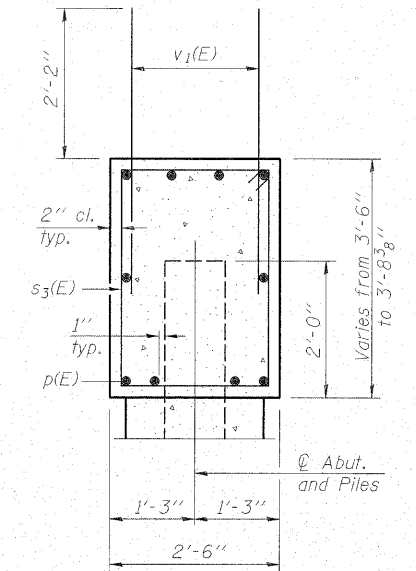
ROUTE NO.	SECTION	COUNTY	TOTAL SHEETS	SHEET NO.	SHEET NO. 18
FAP 773 IL 121	(108BR- 3)B-1	CUMBERLAND	96	53	22 SHEETS
FED. ROAD DIST. NO.	ILLINOIS	FED. AID PROJECT-			

Contract # 74237

Notes: Four steps monolithically with cap.



ELEVATION

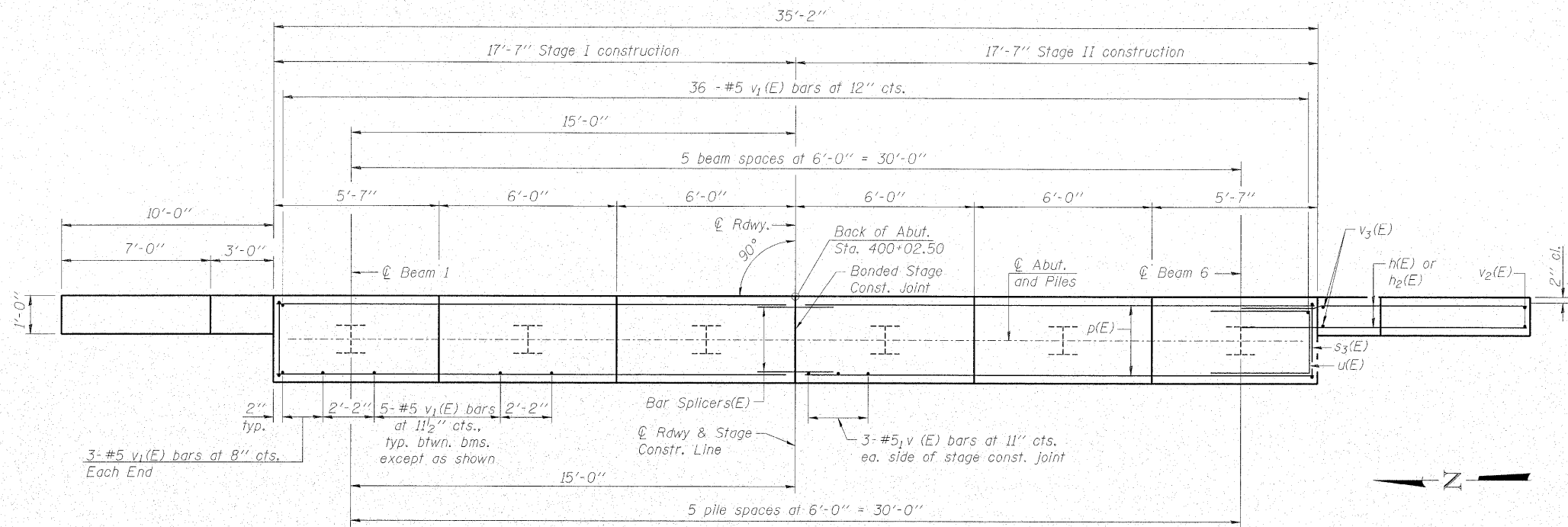


SEC. THRU ABUT.

BILL OF MATERIAL

Bar	No.	Size	Length	Shape
h(E)	28	#6	12'-2"	—
h2(E)	28	#5	12'-2"	—
p(E)	20	#7	17'-3"	—
s3(E)	32	#4	11'-5"	□
u(E)	8	#6	7'-9"	□
v1(E)	68	#5	4'-4"	—
v2(E)	14	#5	11'-10"	—
v3(E)	12	#5	7'-8"	—
Structure Excavation		Cu. Yd.	56	
Concrete Structures		Cu. Yd.	16.7	
Concrete Encasement		Cu. Yd.	2.1	
Reinforcement Bars, Epoxy Coated		Pound	2490	
Furnishing Steel Piles HP12x63		Foot	165	
Driving Piles		Foot	165	
Test Pile Steel HP12x63		Each	1	

For details of Bar Splicers, see sheet 21 of 22.
For details of piles and Concrete Encasement, see sheet 20 of 22.



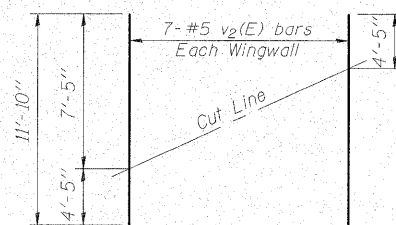
PLAN

PILE DATA

Type: Steel HP12x63
Nominal Required Bearing: 497 kips
Factored Resistance Available: 248 kips
Est. Length: 33 feet
No. Production Piles: 5
No. Test Piles: 1

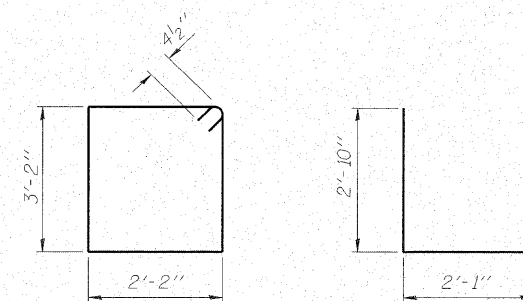


DESIGNED - BAS
CHECKED - KEF
DRAWN - LAD
CHECKED - RJA



FIELD CUTTING DIAGRAM

Order v2(E) full length. Cut as shown and use remainder of bars in opposite face.



BAR s3(E)

BAR u(E)

EAST ABUTMENT
IL ROUTE 121 OVER MULE CREEK
F.A.P. RTE. 773 - SECTION (108BR-3)B-1
CUMBERLAND COUNTY
STATION 399+34.00
STRUCTURE NO. 018-0062