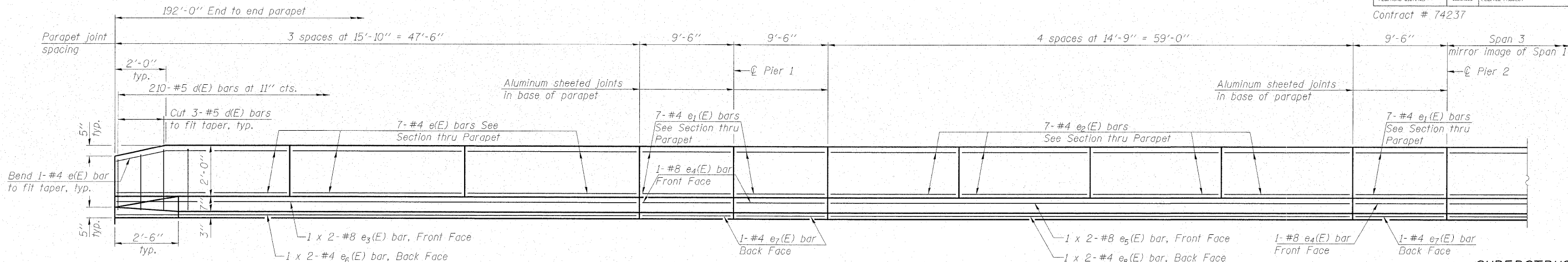


STATE OF ILLINOIS  
DEPARTMENT OF TRANSPORTATION

ROUTE NO.	SECTION	COUNTY	TOTAL SHEETS	SHEET NO.
FA 773 IL 121	(109B) B-1	CUMBERLAND	96	68
FED. ROAD DIST. NO.	ILLINOIS	FED. AID PROJECT		

SHEET NO. 11  
25 SHEETS

Contract # 74237

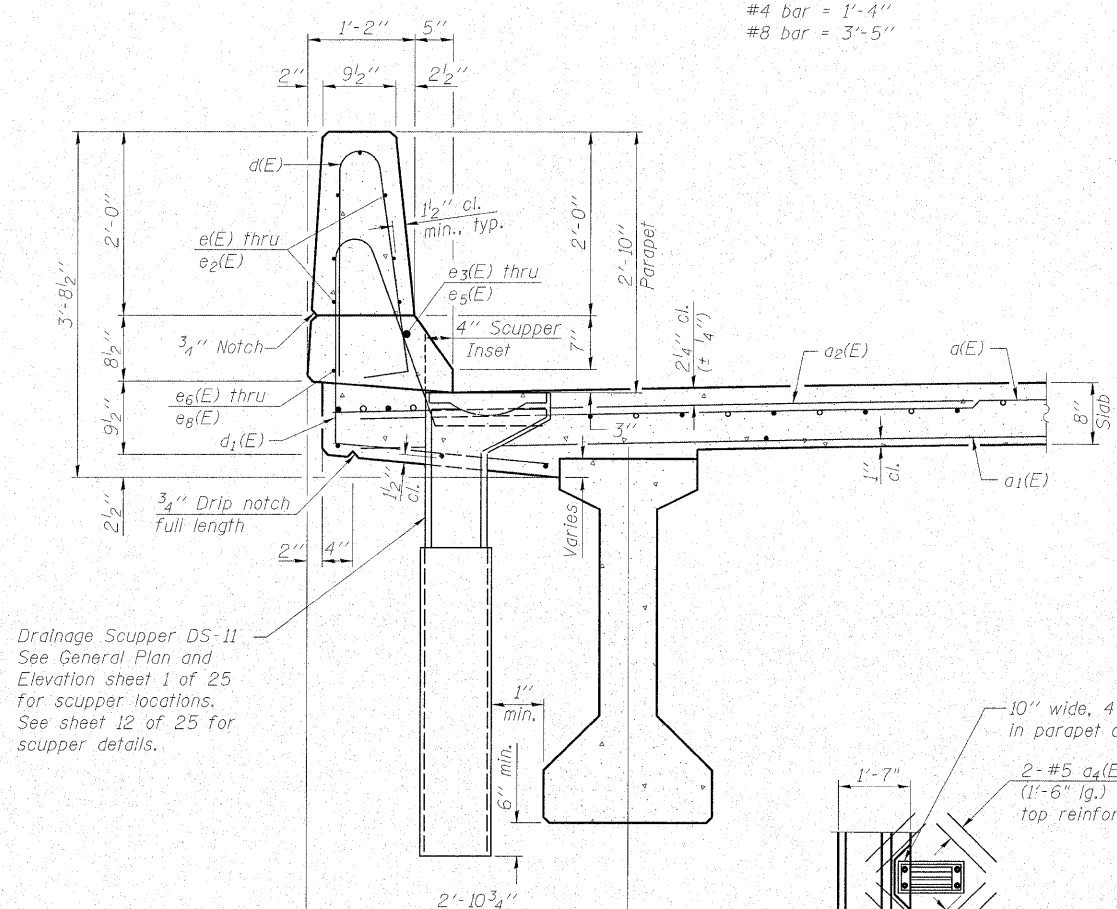
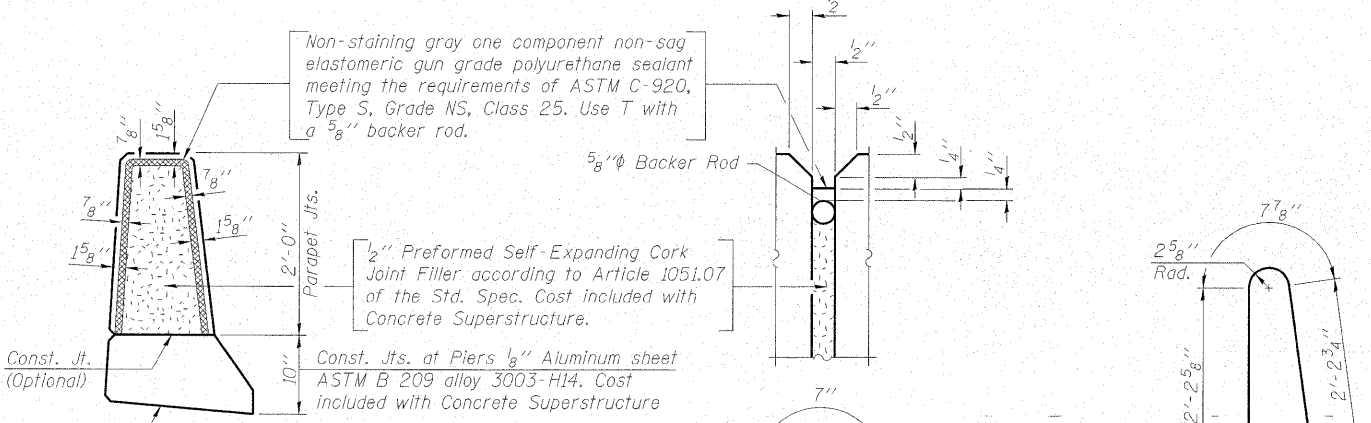


**SUPERSTRUCTURE  
BILL OF MATERIAL**

Bar	No.	Size	Length	Shape
d(E)	576	#5	17'-1"	—
a1(E)	460	#5	16'-9"	—
a2(E)	576	#6	6'-0"	—
a3(E)	8	#5	18'-2"	—
a4(E)	16	#5	1'-6"	—
b(E)	304	#5	25'-6"	—
b1(E)	136	#6	40'-4"	—
b2(E)	224	#5	28'-10"	—
d(E)	420	#5	5'-7"	—
d1(E)	420	#5	7'-5"	—
e(E)	84	#4	15'-6"	—
e1(E)	56	#4	9'-2"	—
e2(E)	56	#4	14'-5"	—
e3(E)	8	#8	25'-5"	—
e4(E)	8	#8	9'-2"	—
e5(E)	4	#8	31'-2"	—
e6(E)	8	#4	24'-4"	—
e7(E)	8	#4	9'-2"	—
e8(E)	4	#4	30'-1"	—
m(E)	8	#6	17'-5"	—
m1(E)	12	#6	18'-5"	—
m2(E)	24	#6	8'-0"	—
m3(E)	24	#6	3'-11"	—
m4(E)	16	#6	1'-9"	—
m5(E)	12	#8	5'-10"	—
m6(E)	32	#4	5'-4"	—
m7(E)	16	#4	2'-3"	—
s(E)	72	#5	6'-9"	—
s1(E)	64	#4	11'-0"	—
s2(E)	52	#4	10'-7"	—
v(E)	68	#5	3'-4"	—
Reinforcement Bars, Epoxy Coated		Pound	58420	
Concrete Superstructure		Cu. Yds.	258.2	

**MINIMUM BAR LAP**  
(Parapet)  
#4 bar = 1'-4"  
#8 bar = 3'-5"

**INSIDE ELEVATION OF PARAPET**

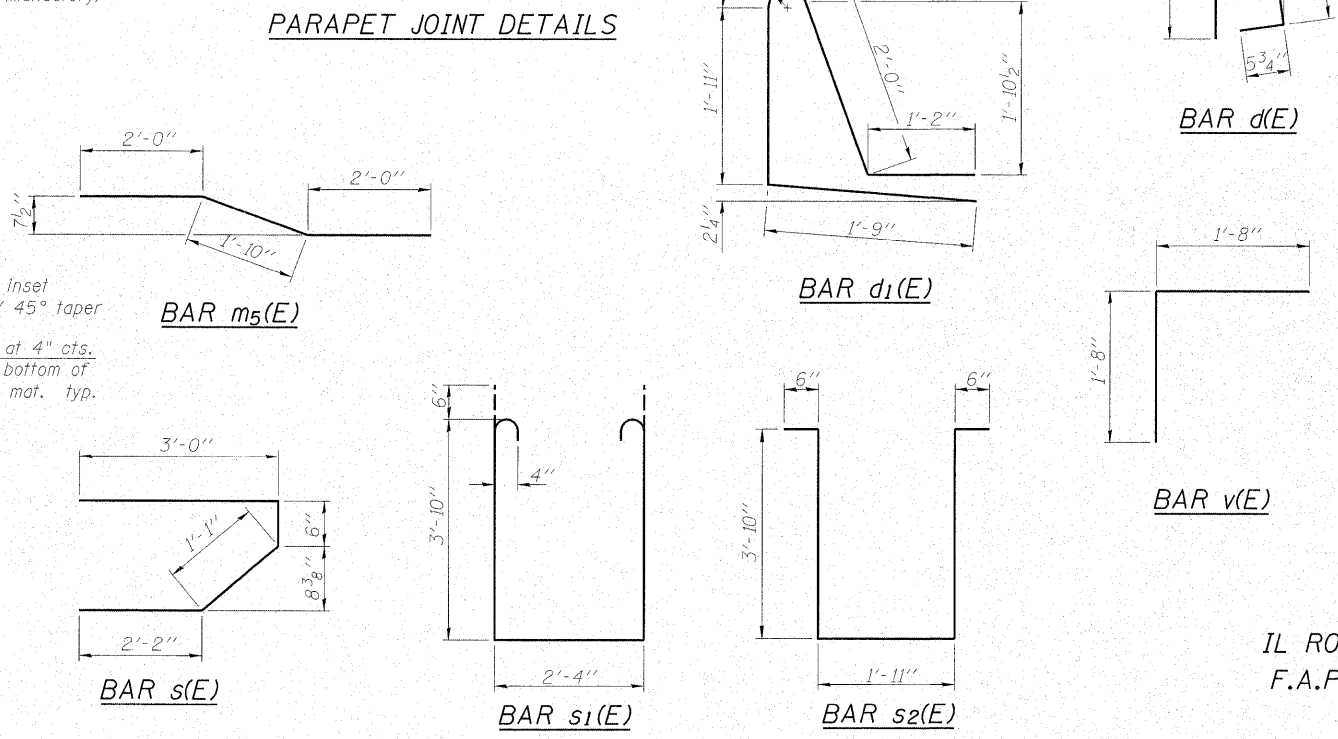


Drainage Scupper DS-11  
See General Plan and  
Elevation sheet 1 of 25  
for scupper locations.  
See sheet 12 of 25 for  
scupper details.

DESIGNED - BAS
CHECKED - KEF
DRAWN - LAD
CHECKED - RJA

**PLAN OF ADDITIONAL  
SLAB REINF. AT SCUPPERS**

Note:  
Cut longitudinal reinforcement to  
clear drainage scuppers.



Bars indicated thus 1 x 2-#5 etc. indicates  
1 line of bars with 2 lengths per line.

**SUPERSTRUCTURE DETAILS**  
IL ROUTE 121 OVER BIG MUDDY CREEK  
F.A.P. RTE. 773 - SECTION (109B)B-1  
CUMBERLAND COUNTY  
STATION 574+84.00  
STRUCTURE NO. 018-0063