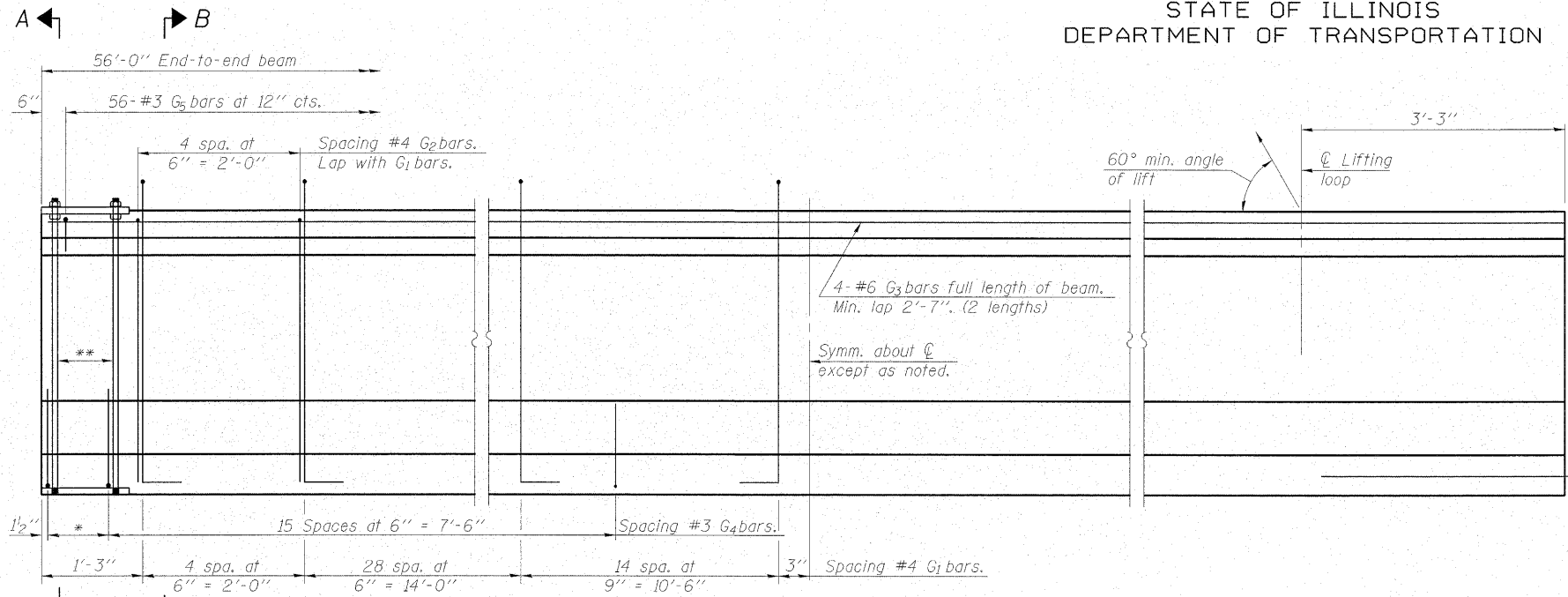


STATE OF ILLINOIS  
DEPARTMENT OF TRANSPORTATION

ROUTE NO.	SECTION	COUNTY	TOTAL SHEETS	SHEET NO.	SHEET NO. 16 25 SHEETS
FA 773 IL 121	(109B) B-1	CUMBERLAND	96	73	
FED. ROAD DIST. NO.	ILLINOIS	FED. AID PROJECT			

Contract # 74237

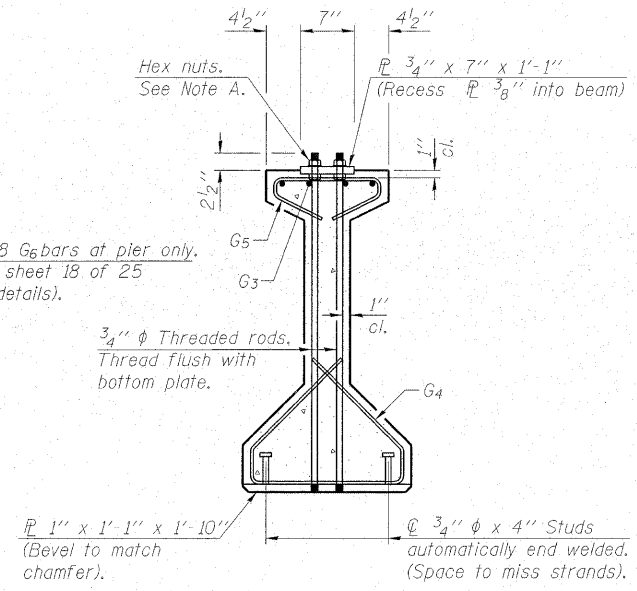


**ELEVATION OF BEAM**  
(Showing reinforcement & dimensions)

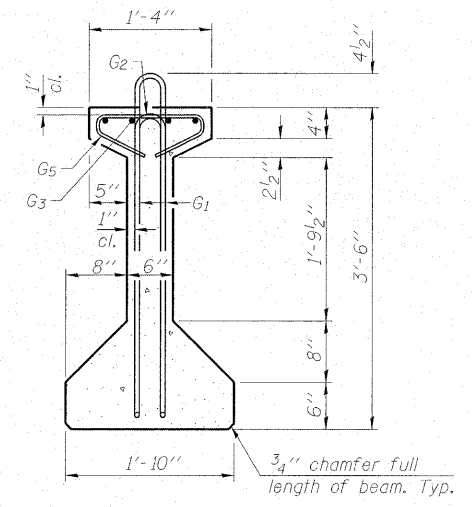
\*3 spaces at 3" = 9".  
\*\*4-3/4" φ threaded dowel rods at 3" cts., Each Face.

2-#8 G6 bars at pier only.  
(See sheet 18 of 25 for details).

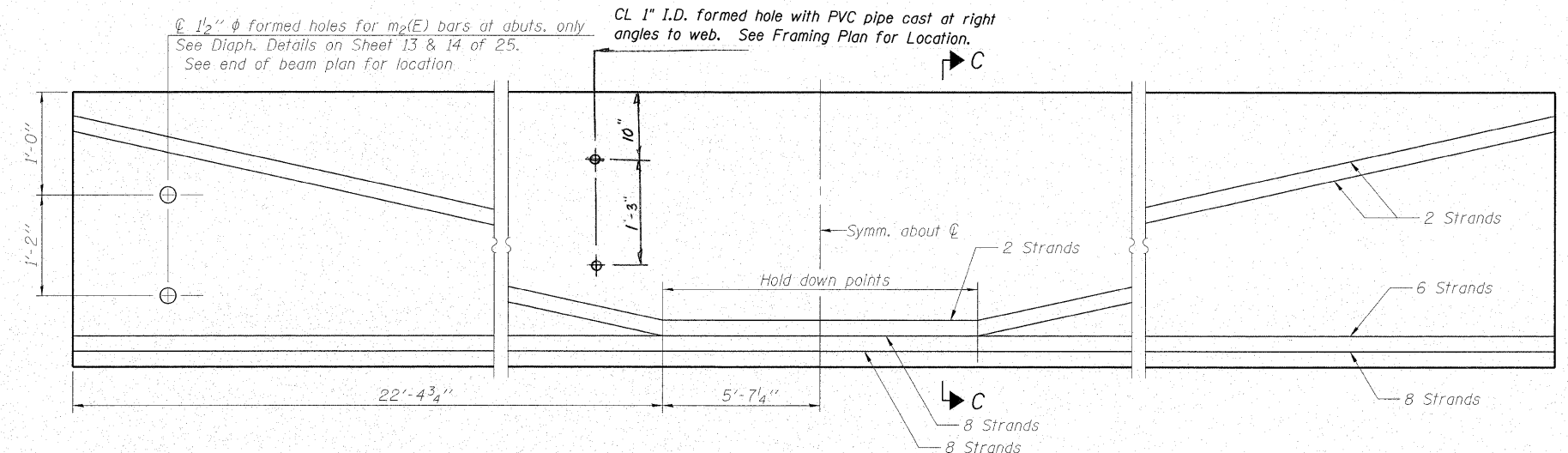
Note A:  
Hex nuts (top and bottom) with lock washers (top). Only tighten sufficiently to compress lock washers.



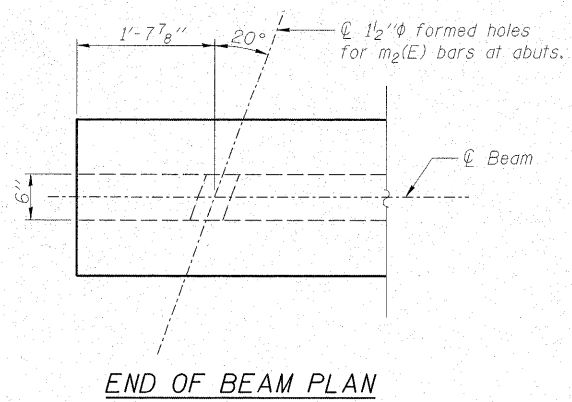
**SECTION A-A**



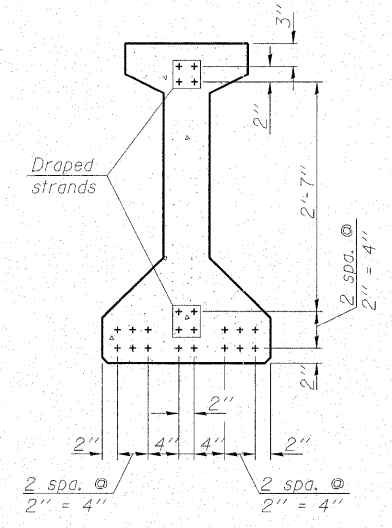
**SECTION B-B**



**ELEVATION OF BEAM**  
(Showing prestressing steel)



**END OF BEAM PLAN**



**SECTION C-C**

**\*\*\*BAR LIST  
ONE BEAM ONLY**

Bar	No.	Size	Length	Shape
G1	94	#4	8'-5"	⊏
G2	10	#4	6'-8"	⊏
G3	8	#6	29'-4"	—
G4	38	#3	4'-11"	⊏
G5	56	#3	2'-6"	⊏
G6	2	#8	3'-9"	⊏

\*\*\*For information only  
Notes:  
See sheet 18 of 25 for additional details and Bill of Material.  
Required release strength, f'ci, shall be 6000 psi.

DESIGNED - BAS
CHECKED - KEF
DRAWN - SGM
CHECKED - RJA

42" PPC I-BEAM (SPANS 1 & 3)  
IL ROUTE 121 OVER BIG MUDDY CREEK  
F.A.P. RTE. 773 - SECTION (109B)B-1  
CUMBERLAND COUNTY  
STATION 574+84.00  
STRUCTURE NO. 018-0063