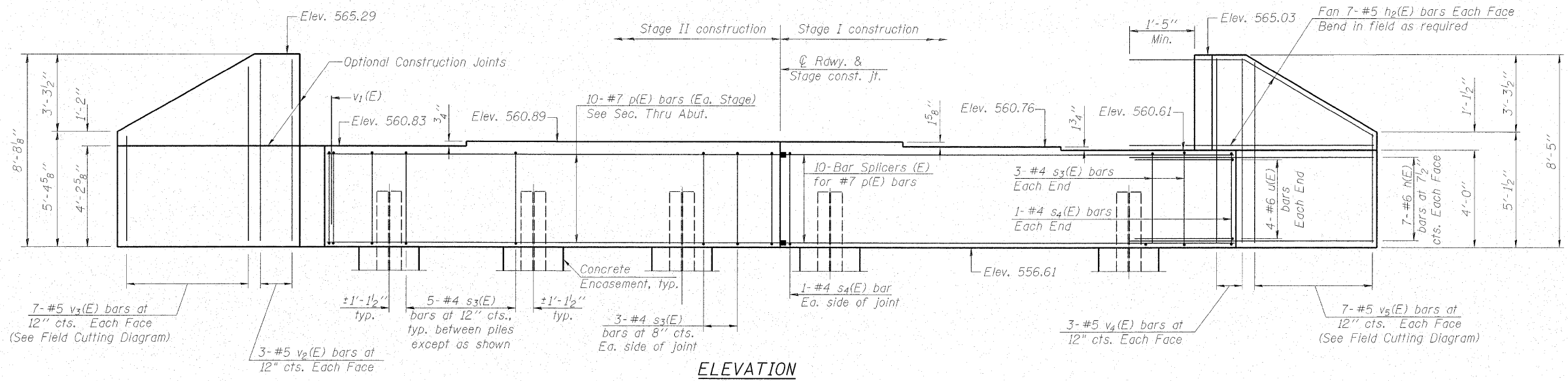


STATE OF ILLINOIS
DEPARTMENT OF TRANSPORTATION

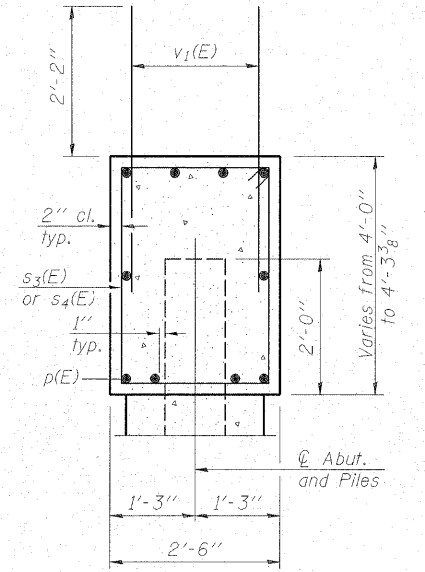
ROUTE NO.	SECTION	COUNTY	TOTAL SHEETS	SHEET NO.	SHEET NO. 19
FA 773 IL 121	(109B) B-1	CUMBERLAND	96	76	25 SHEETS
FED. ROAD DIST. NO.	ILL. DIST. NO.	FED. AID PROJECT			

Contract # 74237

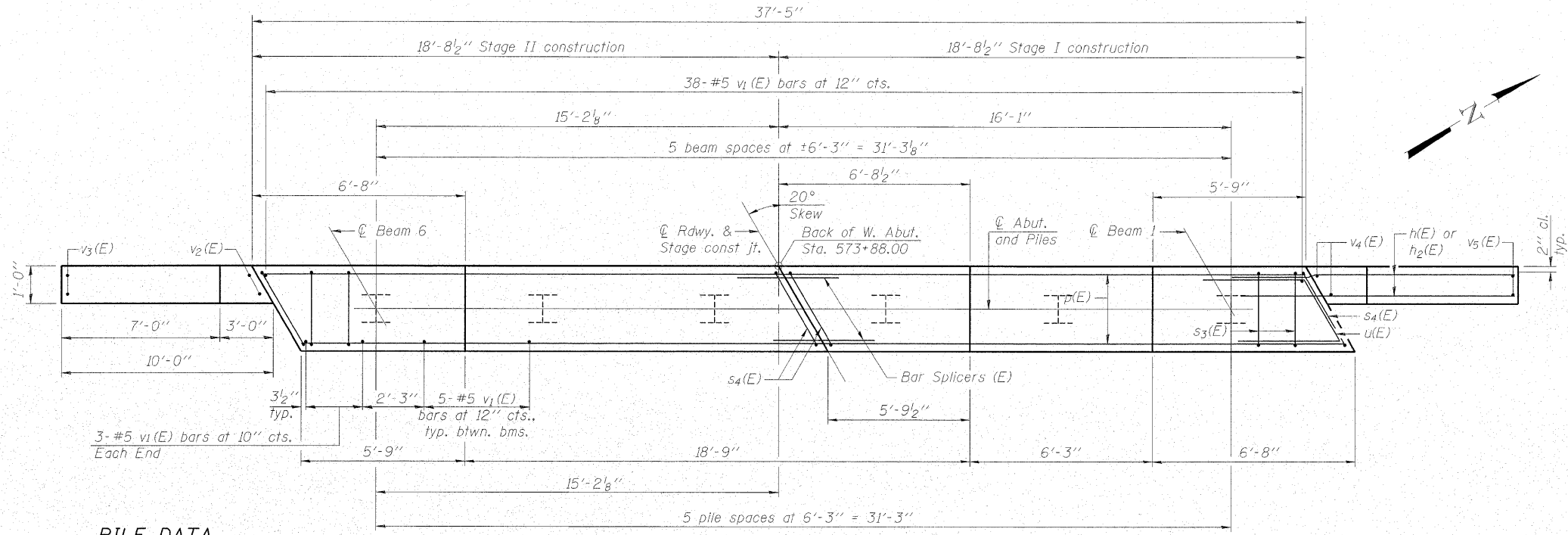
Notes: Four steps monolithically with cap.



ELEVATION

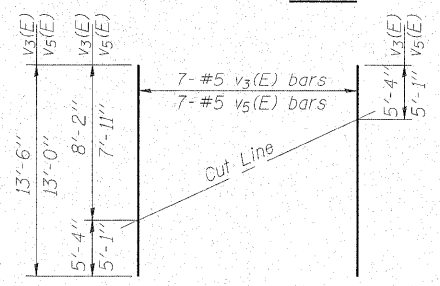


SEC. THRU ABUT.



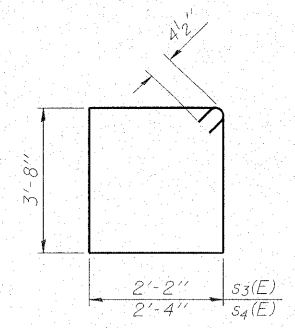
PLAN

PILE DATA
Type: Steel HP12x63
Nominal Required Bearing: 497 kips
Factored Resistance Available: 248 kips
Est. Length: 25'
No. Production Piles: 5
No. Test Piles: 1

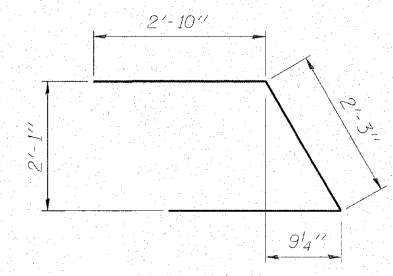


FIELD CUTTING DIAGRAM

Order v3(E) & v5(E) full length. Cut as shown and use remainder of bars in opposite face.



BARS s3(E) & s4(E)



BAR u(E)

BILL OF MATERIAL

Bar	No.	Size	Length	Shape
h(E)	28	#6	12'-5"	—
h2(E)	28	#5	12'-0"	—
p(E)	20	#7	18'-4"	—
s3(E)	32	#4	12'-5"	□
s4(E)	4	#4	12'-9"	□
u(E)	8	#6	7'-11"	┘
v1(E)	69	#5	4'-4"	—
v2(E)	6	#5	8'-5"	—
v3(E)	7	#5	13'-6"	—
v4(E)	6	#5	8'-2"	—
v5(E)	7	#5	13'-0"	—
Structure Excavation	Cu. Yd.	96		
Concrete Structures	Cu. Yd.	19.9		
Concrete Encasement	Cu. Yd.	2.1		
Reinforcement Bars, Epoxy Coated	Pound	2630		
Furnishing Steel Piles, HP12x63	Foot	125		
Driving Piles	Foot	125		
Test Pile, Steel HP12x63	Each	1		

For details of Bar Splicers, see sheet 24 of 25.
For details of piles and Concrete Encasement, see sheet 23 of 25.

WEST ABUTMENT
IL ROUTE 121 OVER BIG MUDDY CREEK
F.A.P. RTE. 773 - SECTION (109B)B-1
CUMBERLAND COUNTY
STATION 574+84.00
STRUCTURE NO. 018-0063

MAURER STUTZ, INC.
ENGINEERS SURVEYORS

DESIGNED - BAS
CHECKED - KEF
DRAWN - LAD
CHECKED - RJA