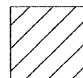
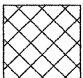
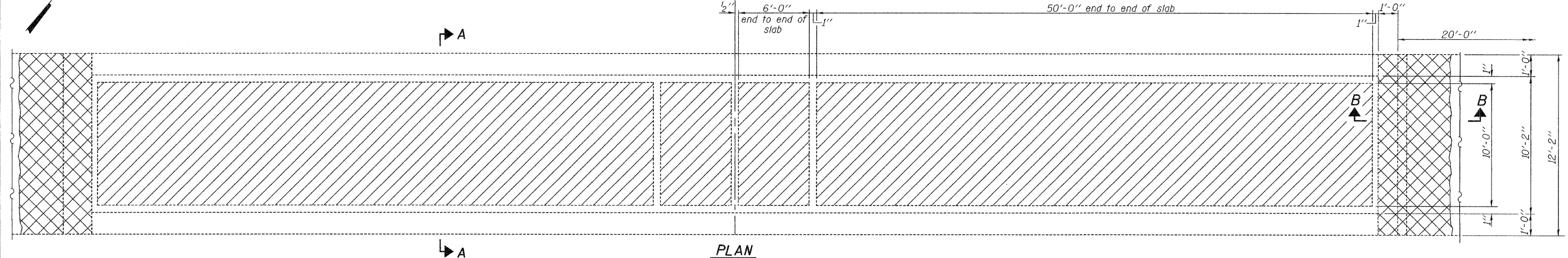


STATE OF ILLINOIS
DEPARTMENT OF TRANSPORTATION

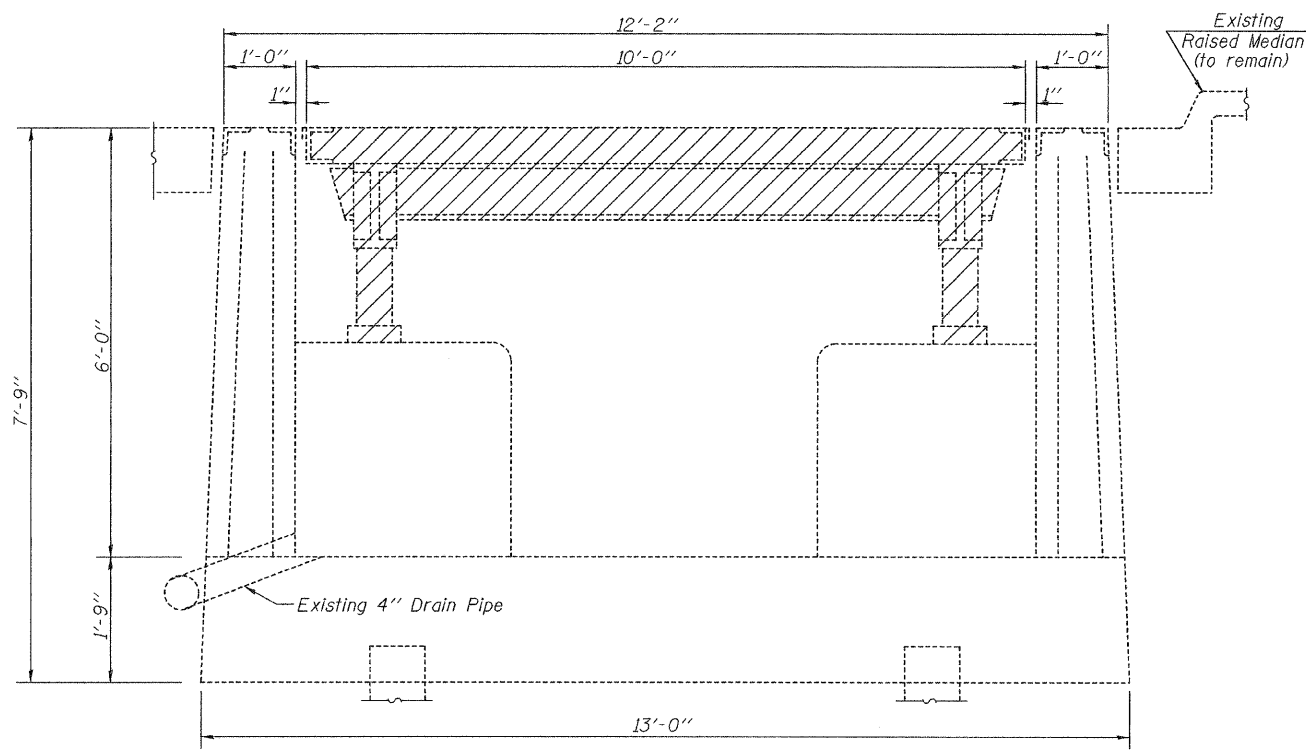
 Indicates limits to be removed as Removal of Existing Superstructures

 Indicates concrete to be removed as Concrete Removal.

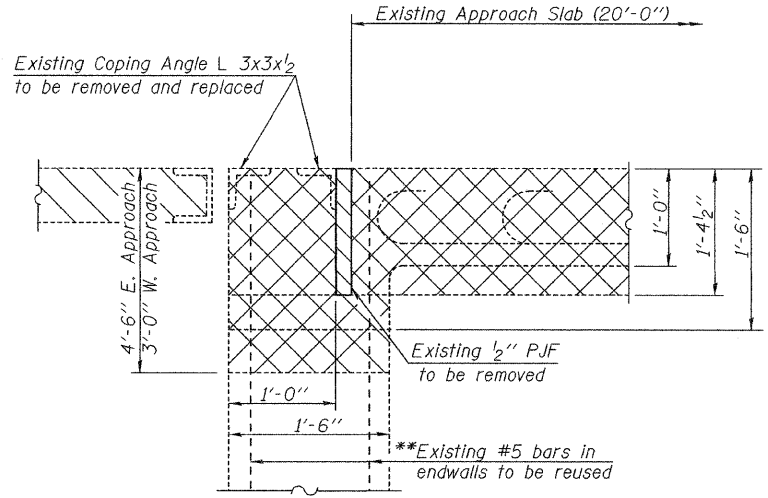
Symm. about \bar{C} (except for concrete pit entrance)



PLAN



SECTION A-A



SECTION B-B

**Existing reinforcement extending into removed areas shall be cleaned, straightened and incorporated into the new construction. Cost included with Concrete Removal.

Note: Cost of removal of coping angles (L3x3x1/2) and P.J.F included in Concrete Removal.

BILL OF MATERIAL

Item	Unit	Total
Concrete Removal	Cu. Yd.	4.4
Removal of Existing Superstructures	Each	1.0

CONCRETE REMOVAL DETAILS
STA. 905+34.94 (E.B.)

DESIGNED Patrick M. Petrone
CHECKED Jay D. Edwards
DRAWN BECKY M. LEACH
CHECKED PMP/JDE

MAY 4, 2009
EXAMINED *Thomas J. Domagalaki*
PASSED *Ralph E. Anderson*
ENGINEER OF BRIDGES AND STRUCTURES

SHEET NO. 3 5 SHEETS	F.A.I. RTE. 70	SECTION D-7 WEIGH STATION	COUNTY FAYETTE	TOTAL SHEETS 8	SHEET NO. 6
	CONTRACT NO. 74370				
FED. ROAD DIST. NO.		ILLINOIS	FED. AID PROJECT		