

STATE OF ILLINOIS
 DEPARTMENT OF TRANSPORTATION
 DIVISION OF HIGHWAYS

**PROPOSED
 HIGHWAY PLANS**

FAP ROUTE 777 (IL 185)
 SECTION D7 HMA SAFETY SHLD 2009
 PROJECT: HSIP-0777(015)
 SAFETY IMPROVEMENTS
 FAYETTE COUNTY

C-97-068-09

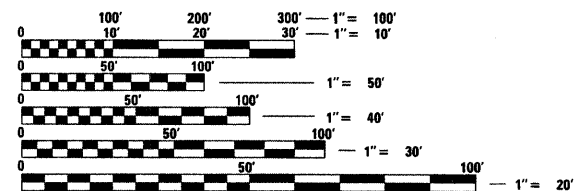
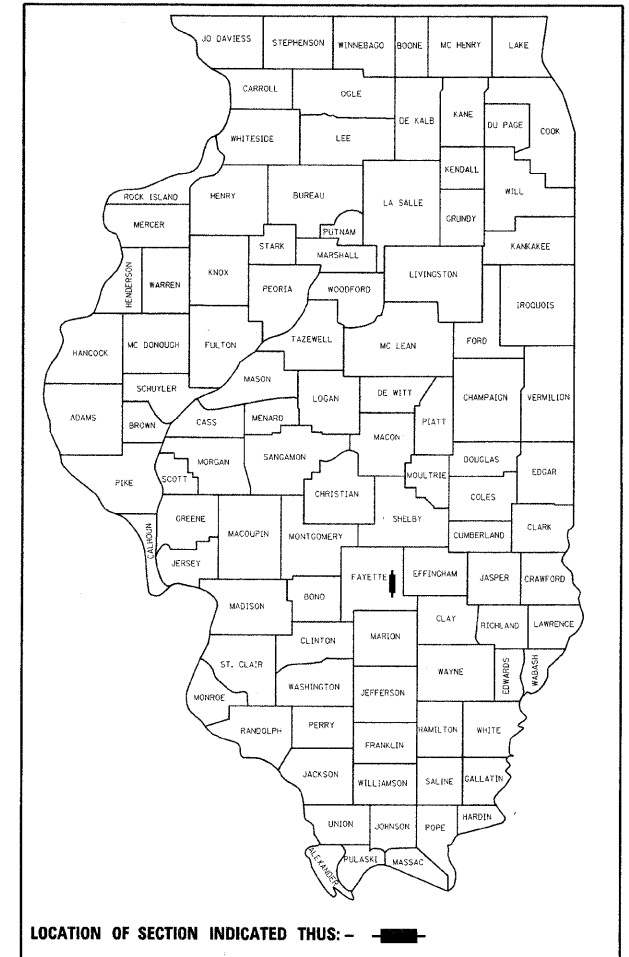
FOR INDEX OF SHEETS, SEE SHEET NO. 2

2007 ADT = 350

F.A.P. RTE.	SECTION	COUNTY	TOTAL SHEETS	SHEET NO.
777	.	Fayette	7	1
		ILLINOIS	CONTRACT NO. 74383	

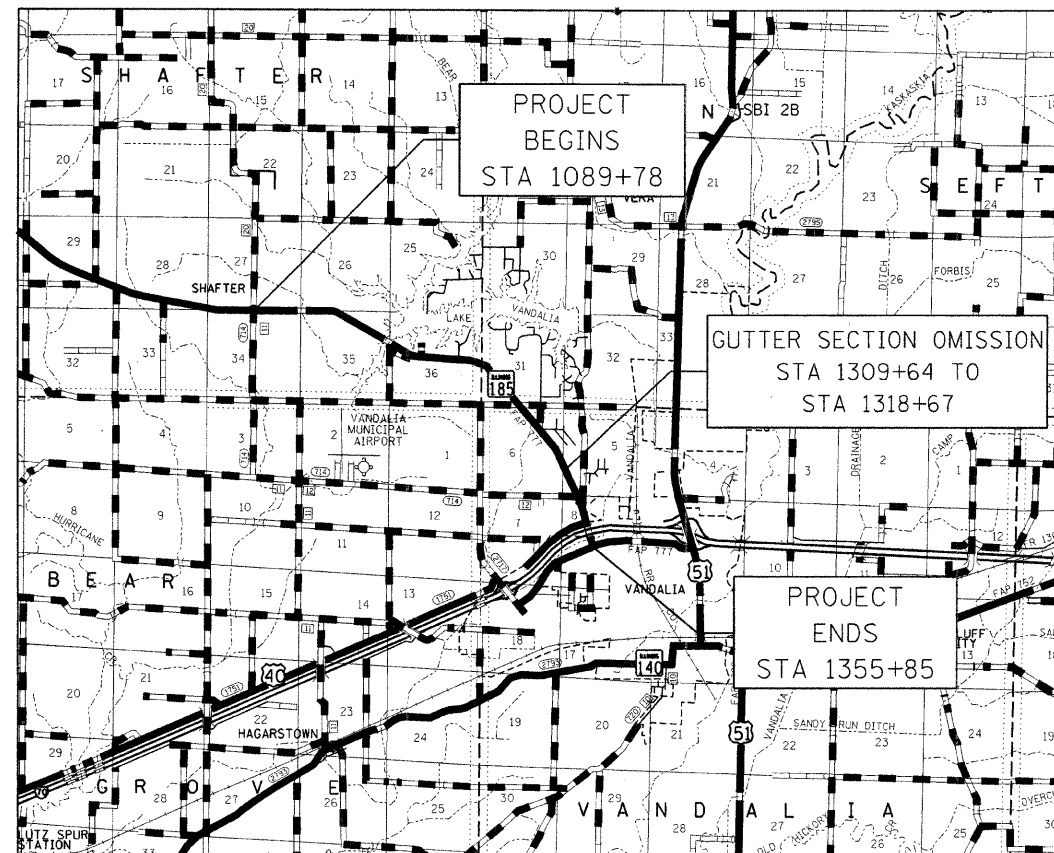
•D7 HMA SAFETY SHLD 2009

D-97-039-09



FULL SIZE PLANS HAVE BEEN PREPARED USING STANDARD ENGINEERING SCALES. REDUCED SIZED PLANS WILL NOT CONFORM TO STANDARD SCALES. IN MAKING MEASUREMENTS ON REDUCED PLANS, THE ABOVE SCALES MAY BE USED.

J.U.L.I.E.
 JOINT UTILITY LOCATION INFORMATION FOR EXCAVATION
 1-800-892-0123
 OR 811



GROSS LENGTH = 26,607 FT. = 5.04 MILE
 NET LENGTH = 25,704 FT. = 4.87 MILE

PROJECT ENGINEER: MARK DAUGHERTY
 PROJECT MANAGER: KALEB HIRTZEL

CONTRACT NO. 74383

STATE OF ILLINOIS
 DEPARTMENT OF TRANSPORTATION
 DIVISION OF HIGHWAYS

SUBMITTED March 20 20 09

James L. Dandell
 DEPUTY DIRECTOR OF HIGHWAYS, REGION ENGINEER

May 8, 20 09
Charles J. Ingersoll
 ENGINEER OF DESIGN AND ENVIRONMENT

May 8, 20 09
Christine M. Reed
 DIRECTOR OF HIGHWAYS, CHIEF ENGINEER

**PRINTED BY THE AUTHORITY
 OF THE STATE OF ILLINOIS**

GENERAL NOTES

THIS SECTION SHALL BE CONSTRUCTED IN ACCORDANCE WITH THE PLANS; THE "STANDARD SPECIFICATIONS FOR ROAD AND BRIDGE CONSTRUCTION" ADOPTED January 1, 2007; THE SUPPLEMENTAL SPECIFICATIONS AND RECURRING SPECIAL PROVISIONS INDICATED ON THE CHECK SHEET, AND "THE SPECIAL PROVISIONS" INCLUDED IN THIS PROPOSAL.

THE PROPOSED PROJECT IS LOCATED ON IL 185 IN FAYETTE COUNTY. THE PROJECT BEGINS ON THE EAST EDGE OF COUNTY ROAD 350 E. AT SHAFTER AND EXTENDS 5.04 MILES SOUTH TO THE NORTH EDGE OF US 40 IN VANDALIA. THE WORK INCLUDED IN SECTION D7 HMA SAFETY SHLD 2009 CONSIST OF HOT-MIX ASPHALT SHOULDERS WITH RUMBLE STRIPS AND AGGREGATE SHOULDERS.

THE CONTRACTOR SHALL PROVIDE INTERNET ACCESS TO THE HOT-MIX ASPHALT PLANT QUALITY CONTROL LAB SO THAT HOT-MIX ASPHALT PLANT REPORTS CAN BE E-MAILED TO THE DISTRICT HEADQUARTERS. THIS WORK SHALL BE INCLUDED IN THE COST OF HOT-MIX ASPHALT ITEMS.

AGGREGATE SHOULDERS, TYPE B SHALL BE CRUSHED STONE, CRUSHED CONCRETE, OR RAP.

THE MATERIAL EXCAVATED FOR THE CONSTRUCTION OF THE HMA SHOULDERS SHALL BE REMOVED FROM THE PROJECT ACCORDING TO ARTICLE 202.03 OF THE STANDARD SPECIFICATIONS. THE REMOVAL OF THE EXCAVATED MATERIAL SHALL BE INCLUDED IN THE CONTRACT UNIT PRICE PER UNIT FOR EXCAVATING AND GRADING EXISTING SHOULDER.

THE TOTAL QUANTITY OF PAINT PAVEMENT MARKING - LINE 4" CONSISTS OF 52713 FEET OF WHITE AND 6652 FEET OF YELLOW.

THE FOLLOWING MIXTURE REQUIREMENTS ARE APPLICABLE FOR THIS PROJECT:

HMA SHOULDER

MIXTURE USE: HMA SHOULDERS, 8"
 APPLICATION: HOT-MIX ASPHALT SHOULDERS
 PG GRADE: PG 58-22
 DESIGN AIR VOIDS: 4.0% @ NDESIGN = 30
 MIXTURE COMPOSITION: IL-19.0L
 FRICTION AGGREGATE: N/A

INDEX OF SHEETS

SHEET NO.	ITEM
1	COVER SHEET
2	INDEX OF SHEETS
2	GENERAL NOTES
3	SUMMARY OF QUANTITIES
4-5	TYPICAL CROSS-SECTIONS
6	SCHEDULES
7	RUMBLE STRIP & HMA SHOULDER DETAIL

THE FOLLOWING STANDARDS ARE A PART OF THESE PLANS AND ARE INCLUDED AFTER SHEET NO. 7:

STD. NO.	DESCRIPTION
000001-05	STANDARD SYMBOLS, ABBREVIATIONS AND PATTERNS
001006	DECIMAL OF AN INCH AND OF A FOOT
482001-02	HMA SHOULDER ADJACENT TO FLEXIBLE PAVEMENT
701011-02	OFF-RD MOVING OPERATIONS, 2L, 2W, DAY ONLY
701326-03	LANE CLOSURE, 2L, 2W, PAVEMENT WIDENING, FOR SPEEDS ? 45 MPH
701901-01	TRAFFIC CONTROL DEVICES

FILE NAME =	USER NAME = steffennk	DESIGNED -	REVISED -	STATE OF ILLINOIS DEPARTMENT OF TRANSPORTATION	GENERAL NOTES & INDEX OF SHEETS	F.A.P. RTE.	SECTION	COUNTY	TOTAL SHEETS	SHEET NO.
es:\pwork\PWIDOT\STEFFENK\0123251\074383-shr-cover.dgn	DRAWN -	REVISED -	777			.	Fayette	7	2	
PLOT SCALE = 50.0000' / IN.	CHECKED -	REVISED -	CONTRACT NO. 74383							
PLOT DATE = 3/19/2009	DATE -	REVISED -	SCALE:			SHEET NO. OF 7 SHEETS	STA. TO STA.	ILLINOIS FED. AID PROJECT		

SUMMARY OF QUANTITIES			TOTAL QUANTITIES	CONSTRUCTION TYPE CODE	
CODE NO	ITEM	UNIT		SFTY2A	
				RURAL 90% FED 10% STATE	URBAN 90% FED 10% STATE
20200600	EXCAVATING AND GRADING EXISTING SHOULDER	UNIT	486	332	154
48101200	AGGREGATE SHOULDERS, TYPE B	TON	1014	693	321
48203029	HOT-MIX ASPHALT SHOULDERS, 8"	SQ YD	16188	11068	5120
64200105	SHOULDER RUMBLE STRIP	FOOT	45743	31434	14309
67100100	MOBILIZATION	L SUM	1	0.5	0.5
70100500	TRAFFIC CONTROL AND PROTECTION, STANDARD 701326	L SUM	1	0.5	0.5
* 78001110	PAINT PAVEMENT MARKING - LINE 4"	FOOT	59365	38403	20962

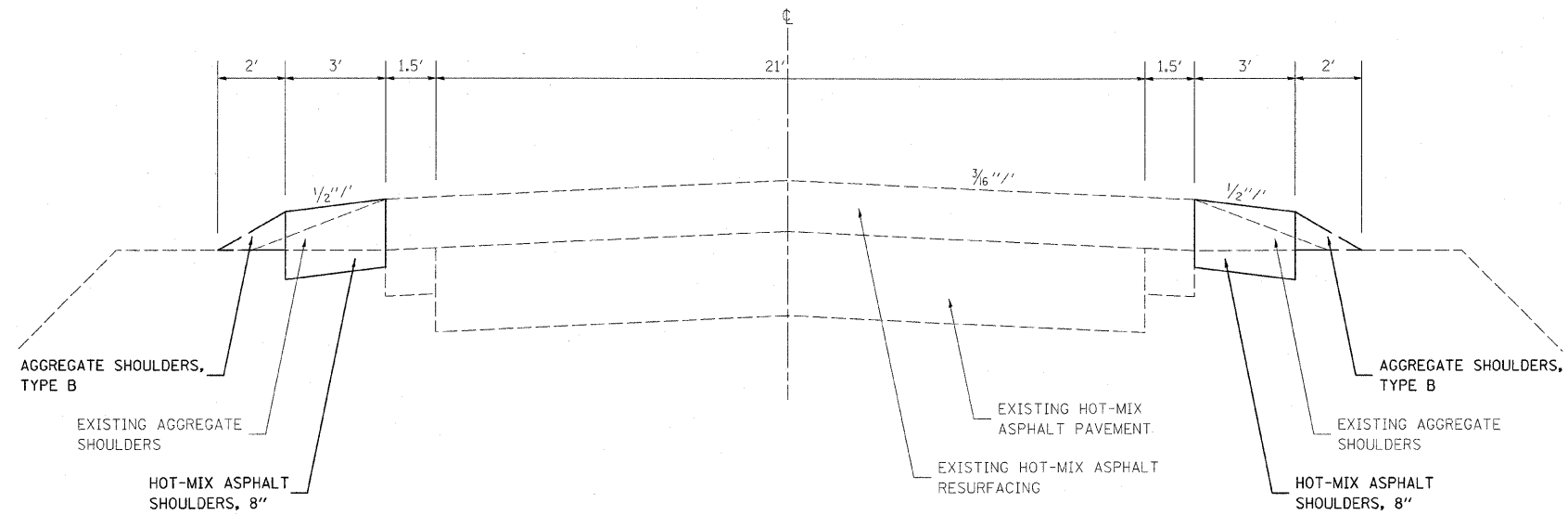
*SPECIALTY ITEMS

FILE NAME =	USER NAME = steffenmk	DESIGNED -	REVISED -
c:\pwork\PWIDOT\STEFFENMK\012325\ND74383-sht-qa.dgn		DRAWN -	REVISED -
PLOT SCALE = 50.0000 / IN.		CHECKED -	REVISED -
PLOT DATE = 3/19/2009		DATE -	REVISED -

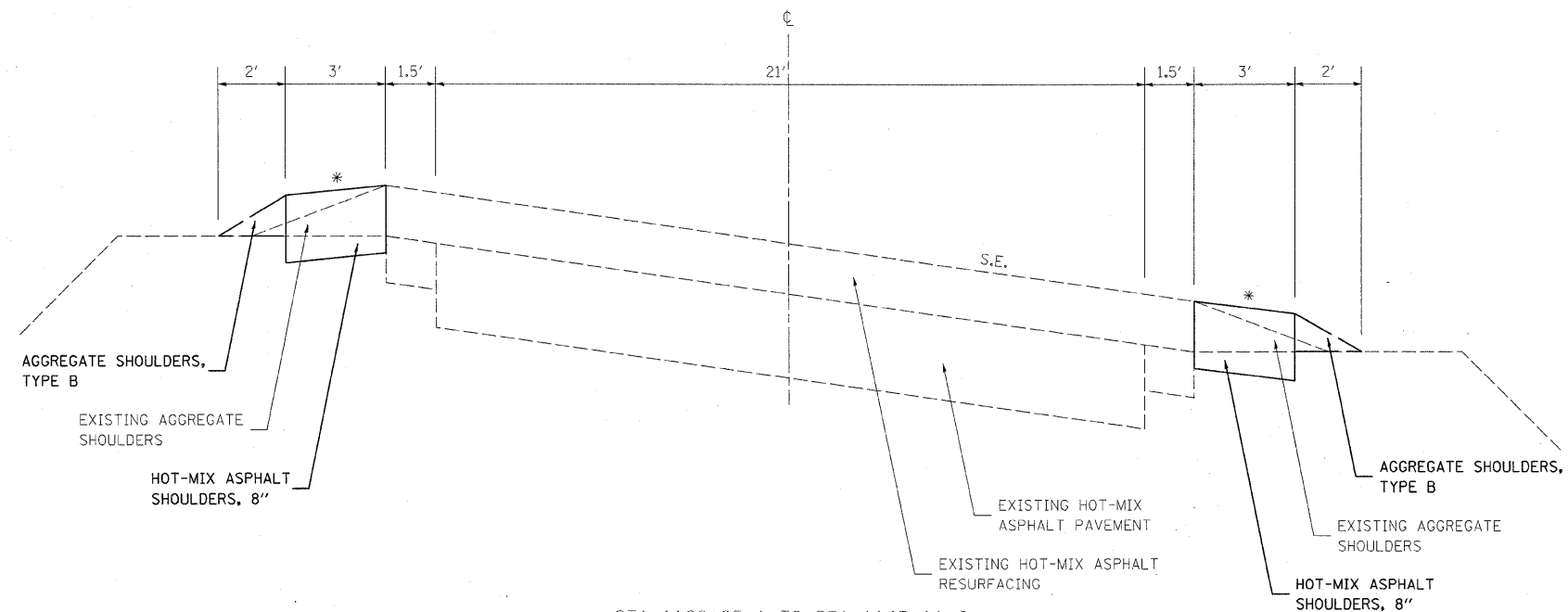
STATE OF ILLINOIS
DEPARTMENT OF TRANSPORTATION

SUMMARY OF QUANTITIES	
SCALE:	SHEET NO. 3 OF 7 SHEETS STA. TO STA.

F.A.P. RTE.	SECTION	COUNTY	TOTAL SHEETS	SHEET NO.
777	.	Fayette	7	3
ILLINOIS FED. AID PROJECT			CONTRACT NO. 74383	



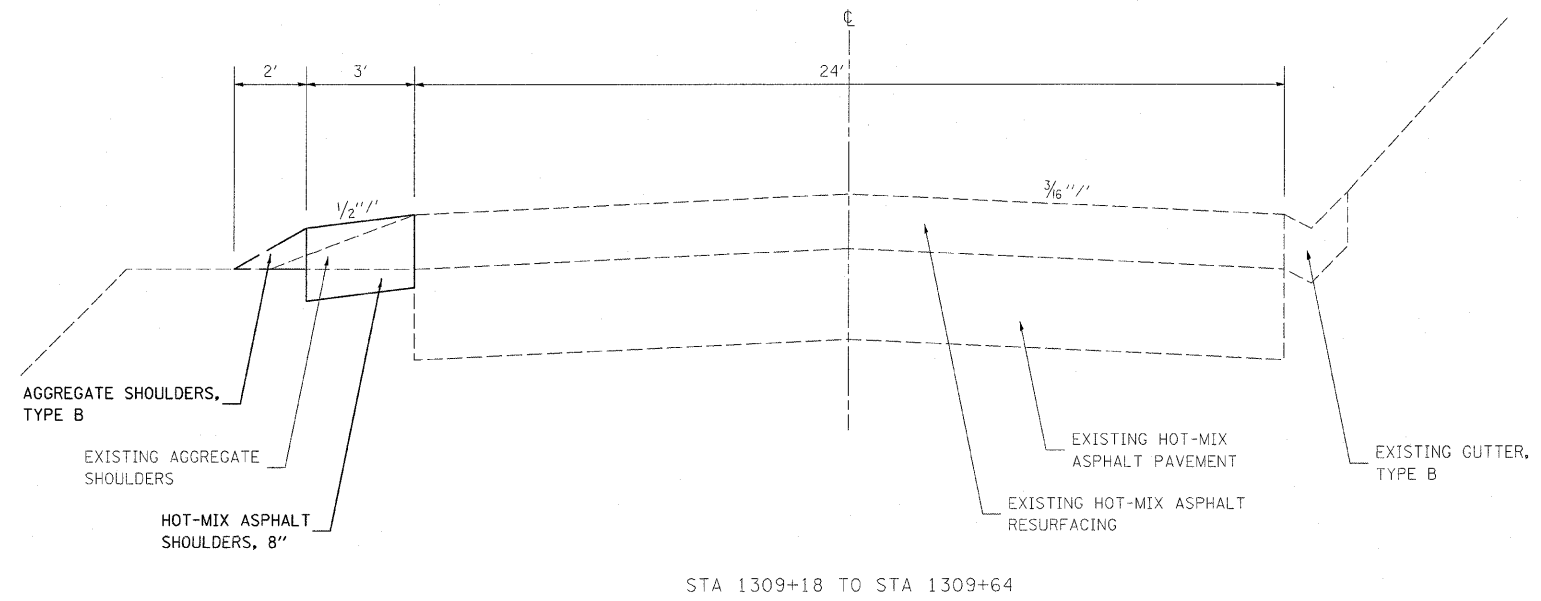
STA 1089+78 TO STA 1129+95.1
 STA 1145+11.8 TO STA 1161+92.4
 STA 1187+50.0 TO STA 1194+91.0
 STA 1196+07.4 TO STA 1218+76.5
 STA 1237+92.5 TO STA 1288+87.2
 STA 1304+03.9 TO STA 1309+18
 STA 1318+67 TO STA 1330+49.4
 STA 1355+38.5 TO STA 1355+85



STA 1129+95.1 TO STA 1145+11.8
 STA 1181+92.4 TO STA 1187+50.0
 STA 1194+91.0 TO STA 1196+07.4
 STA 1218+76.5 TO STA 1237+92.5
 STA 1288+87.2 TO STA 1304+03.9
 STA 1330+49.4 TO STA 1355+38.5

* REFER TO STANDARD 482001-02 FOR SHOULDER SLOPE REQUIREMENTS

FILE NAME =	USER NAME = steffarek	DESIGNED -	REVISED -	STATE OF ILLINOIS DEPARTMENT OF TRANSPORTATION	TYPICAL SECTIONS			F.A.P. RTE.	SECTION	COUNTY	TOTAL SHEETS	SHEET NO.
ca:\pwwork\p\w\DOT\STEFFENMK\d0123251\	74383-shl-tyb.dgn	DRAWN -	REVISED -					777	*	Fayette	7	4
PLOT SCALE = 50,0000' / IN.		CHECKED -	REVISED -		SCALE: SHEET NO. OF SHEETS STA. TO STA.			ILLINOIS FED. AID PROJECT		CONTRACT NO. 74383		
PLOT DATE = 3/19/2009		DATE -	REVISED -									



FILE NAME =
 c:\pw\work\PW1001\STEFFENMK\0123251\07

USER NAME = steffenk
 74383-shl-typ.dgn
 PLOT SCALE = 50.0000' / IN.
 PLOT DATE = 3/19/2009

DESIGNED -
 DRAWN -
 CHECKED -
 DATE -

REVISED -
 REVISED -
 REVISED -
 REVISED -

**STATE OF ILLINOIS
 DEPARTMENT OF TRANSPORTATION**

TYPICAL SECTIONS

SCALE: SHEET NO. OF SHEETS STA. TO STA.

F.A.P. RTE.	SECTION	COUNTY	TOTAL SHEETS	SHEET NO.
777	*	Fayette	7	5
CONTRACT NO. 74383				
ILLINOIS FED. AID PROJECT				

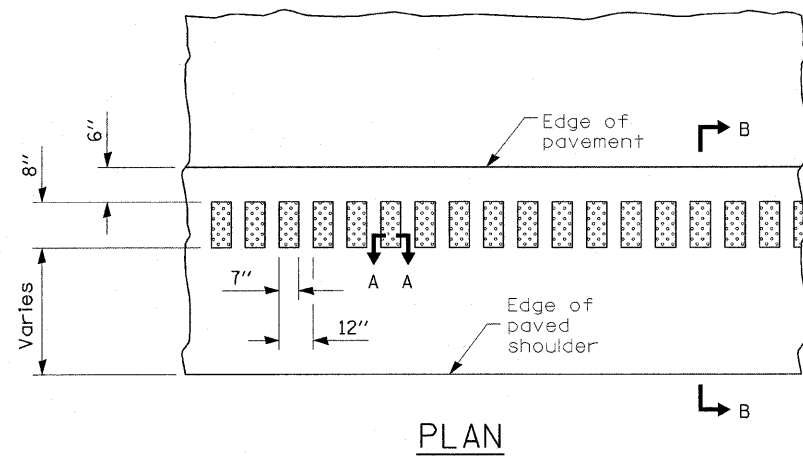
SHOULDER SCHEDULE:

STATION TO STATION	LENGTH	EXCAVATING AND GRADING EXISTING SHOULDER	AGGREGATE SHOULDERS, TYPE B		HOT-MIX ASPHALT SHOULDERS, 8"	SHOULDER RUMBLE STRIP
			UNIT	SQ YD		
1089+78 TO 1261+42	17164.0	332.0	693.3	11068.0	31434.0	
1261+42 TO 1309+18	4776.0	89.6	187.2	2988.0	8394.0	
1309+18 TO 1309+64	46.0	0.5	1.0	15.3	46.0	
1309+64 TO 1318+67	903.0	OMMISSION				
1318+67 TO 1355+85	3718.0	63.5	132.6	2116.3	5869.0	
TOTALS	26607	486	1014	16188	45743	

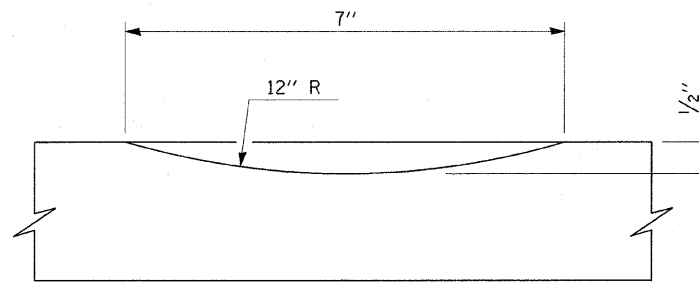
PAVEMENT MARKING SCHEDULE:

STATION TO STATION	LENGTH	PAINT PAVEMENT MARKING - LINE 4"
1089+78 TO 1261+42	17164.0	38403.0
1261+42 TO 1309+18	4776.0	10596.0
1309+18 TO 1309+64	46.0	103.5
1309+64 TO 1318+67	903.0	2031.8
1318+67 TO 1355+85	3718.0	8230.5
TOTALS	26607	59365

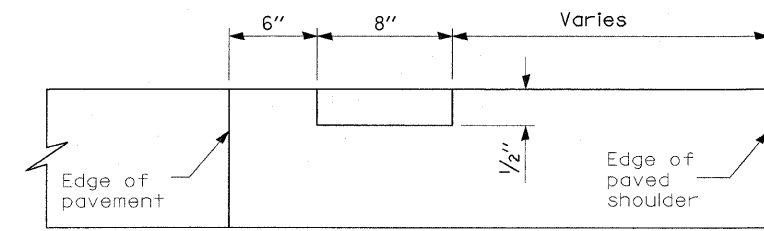
FILE NAME =	USER NAME = stefFennk	DESIGNED -	REVISED -	STATE OF ILLINOIS DEPARTMENT OF TRANSPORTATION	SCHEDULES	F.A.P. RTE.	SECTION	COUNTY	TOTAL SHEETS	SHEET NO.	
c:\pw_work\PI\DOT\STEFFENMK\0812325\ND74383-sht-sched.dgn		DRAWN -	REVISED -			777		Fayette	7	6	
PLOT SCALE = 50.0000' / IN.		CHECKED -	REVISED -			CONTRACT NO. 74383					
PLOT DATE = 3/19/2009		DATE -	REVISED -			ILLINOIS FED. AID PROJECT					
					SCALE:	SHEET NO. OF SHEETS STA. TO STA.		•D7 HMA SAFETY SHLD 2009			



PLAN



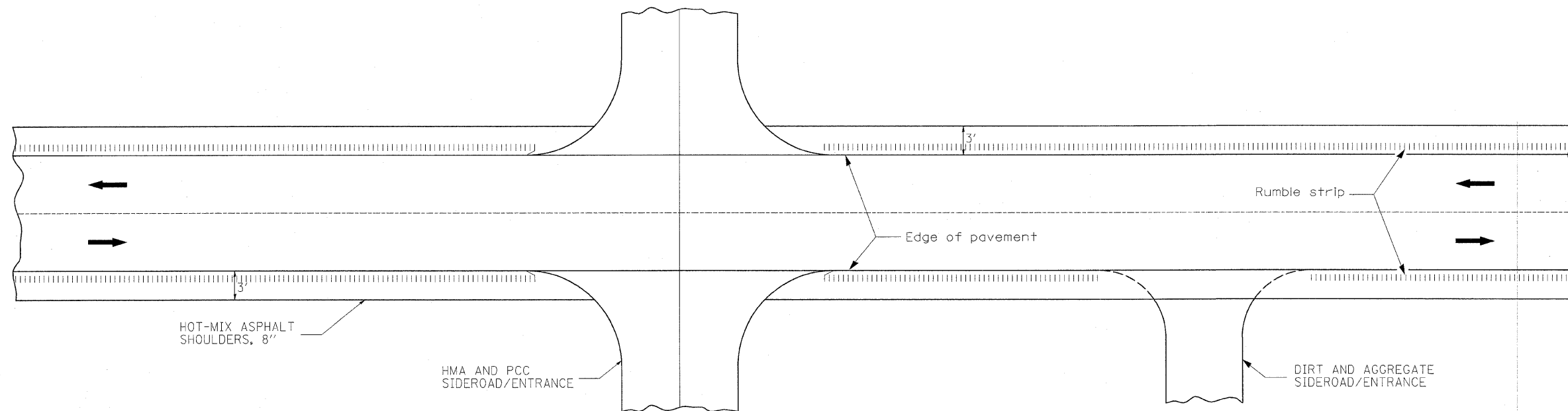
SECTION A-A



SECTION B-B

NOTE: OMIT RUMBLE STRIPS ON ALL SIDEROADS, PRIVATE AND COMMERCIAL ENTRANCES, AND MAILBOX TURNOUTS. RUMBLE STRIPS SHALL NOT BE OMITTED ON FIELD ENTRANCES.

OMIT HOT-MIX ASPHALT SHOULDER, 8\"/>



TYPICAL APPLICATION AT SIDEROADS AND ENTRANCES

FILE NAME =	USER NAME = steffennk	DESIGNED -	REVISED -	STATE OF ILLINOIS DEPARTMENT OF TRANSPORTATION	HMA SHOULDER AND RUMBLE STRIP DETAIL			F.A.P. RTE.	SECTION	COUNTY	TOTAL SHEETS	SHEET NO.
ca:\pwwork\pww\DOT\STEFFEN\MK\012325\1\74383-shl\detLdgn	PLOT SCALE = 50.0000' / IN.	DRAWN -	REVISED -					777		Fayette	7	7
	PLOT DATE = 3/19/2009	CHECKED -	REVISED -		SCALE: SHEET NO. OF SHEETS STA. TO STA.			ILLINOIS FED. AID PROJECT				
		DATE -	REVISED -		CONTRACT NO. 74383			*07 HMA SAFETY SHLD 2009				