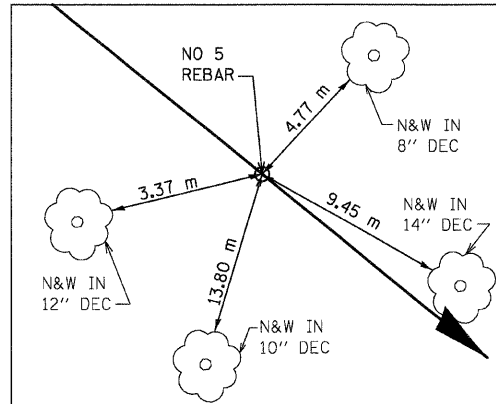
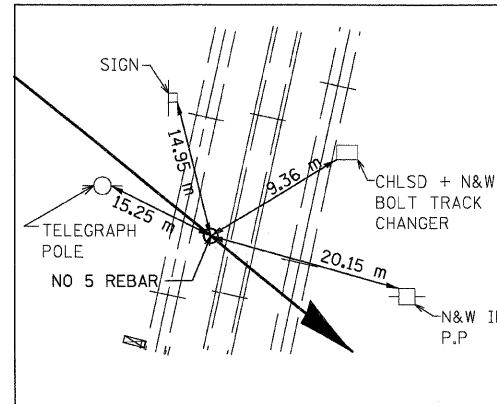


F.A.P. RTE.	SECTION	COUNTY	TOTAL SHEETS	SHEET NO.
310	60-15VB-1&2	MADISON	14	13
STA.	TO STA.			
FED. ROAD DIST. NO.	ILLINOIS	FED. AID PROJECT	CONTRACT NO. 7668A	



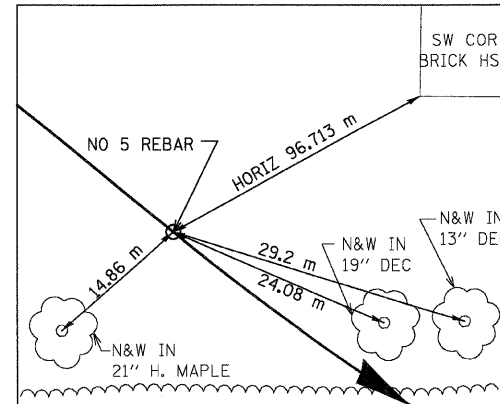
RAMP 'D' POT STA 0+000.000

N 255,096.1499 E 698,481.6737



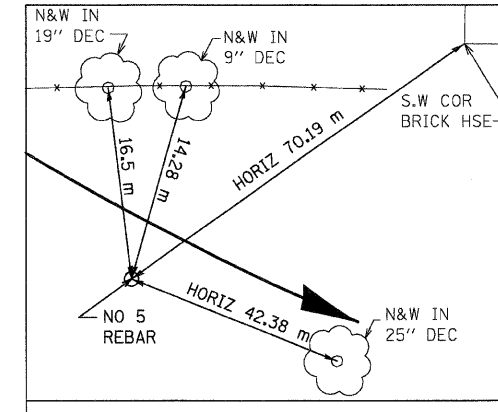
RAMP 'D' POT STA 0+042.000

N 255,069.6531 E 698,514.2608



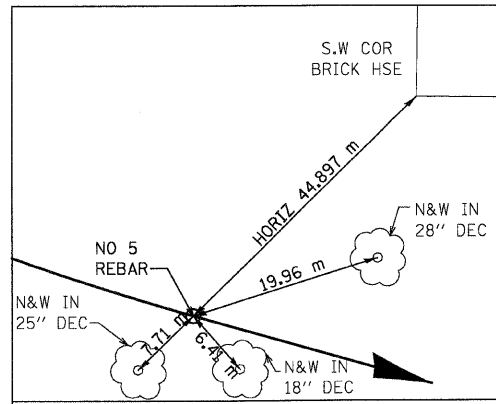
RAMP 'D' PC STA 0+275.572

N 254,922.2983 E 698,695.4855



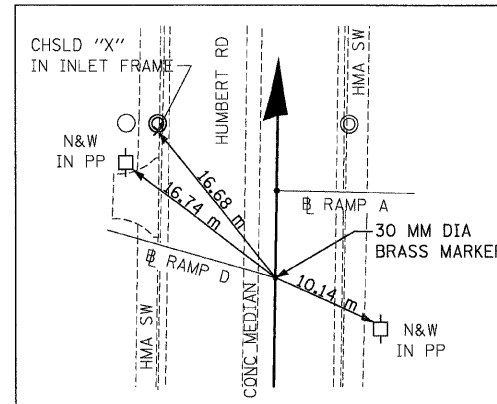
RAMP 'D' PI STA 0+315.538

N 254,897.0846 E 698,726.4946



RAMP 'D' PT STA 0+354.413

N 254,886.1023 E 698,764.9224



RAMP 'D' POT STA 0+418.877

N 254,868.3883 E 698,826.9048

NOTES:

- 1) DIMENSIONS LABELED "HORIZ" ARE HORIZONTAL PULLS.
- 2) DIMENSIONS NOT LABELED "HORIZ" ARE DIRECT PULLS.



(TYP ALL TIES THIS DWG)

REVISIONS	
NAME	DATE

ILLINOIS DEPARTMENT OF TRANSPORTATION
 HORIZONTAL CONTROL TIES
 FAP 310 (IL 255)
 SECTION 60-15VB-1&2
 MADISON COUNTY
 DRAWN BY CES
 CHECKED BY
 DATE