

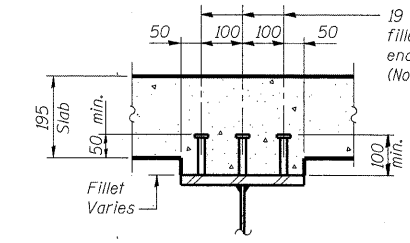
5/7/2009 10:32:09 AM  
 p:\00f\ees\000024\offo\road-brn.dgn\SN060-0310\girders.dgn

ROUTE NO.	SECTION	COUNTY	SHEETS	SHEET NO.
310	*	MADISON	149	47
FED. ROAD DIST. NO. 7		ILLINOIS		FED. AID PROJECT
		* 60-15VB-1 & 2		

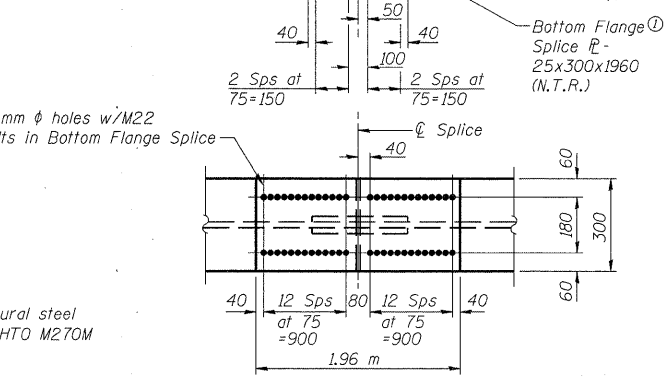
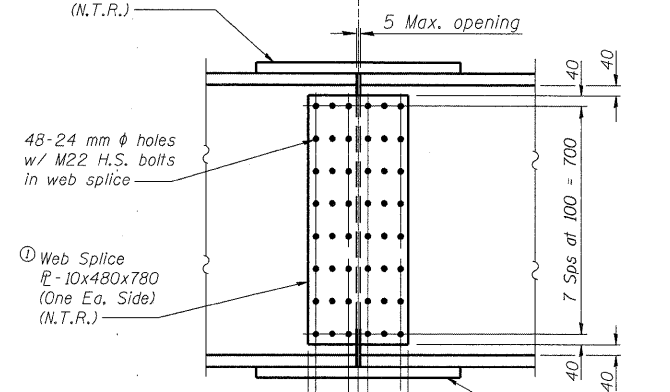
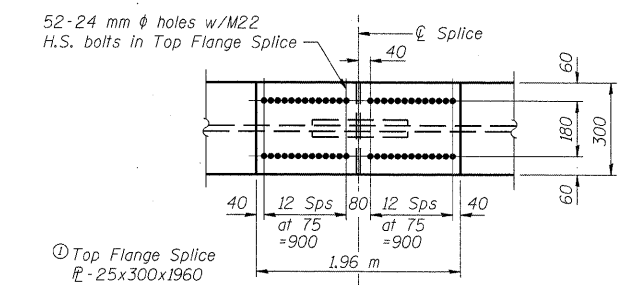
SHEET NO. 16  
36 SHEETS

Contract #76634 \* 60-15VB-1 & 2

19 mm  $\phi$  Granular or solid flux filled headed studs, automatically end welded to flange.  
(No. Req'd. = 6183)



**SECTION A-A**



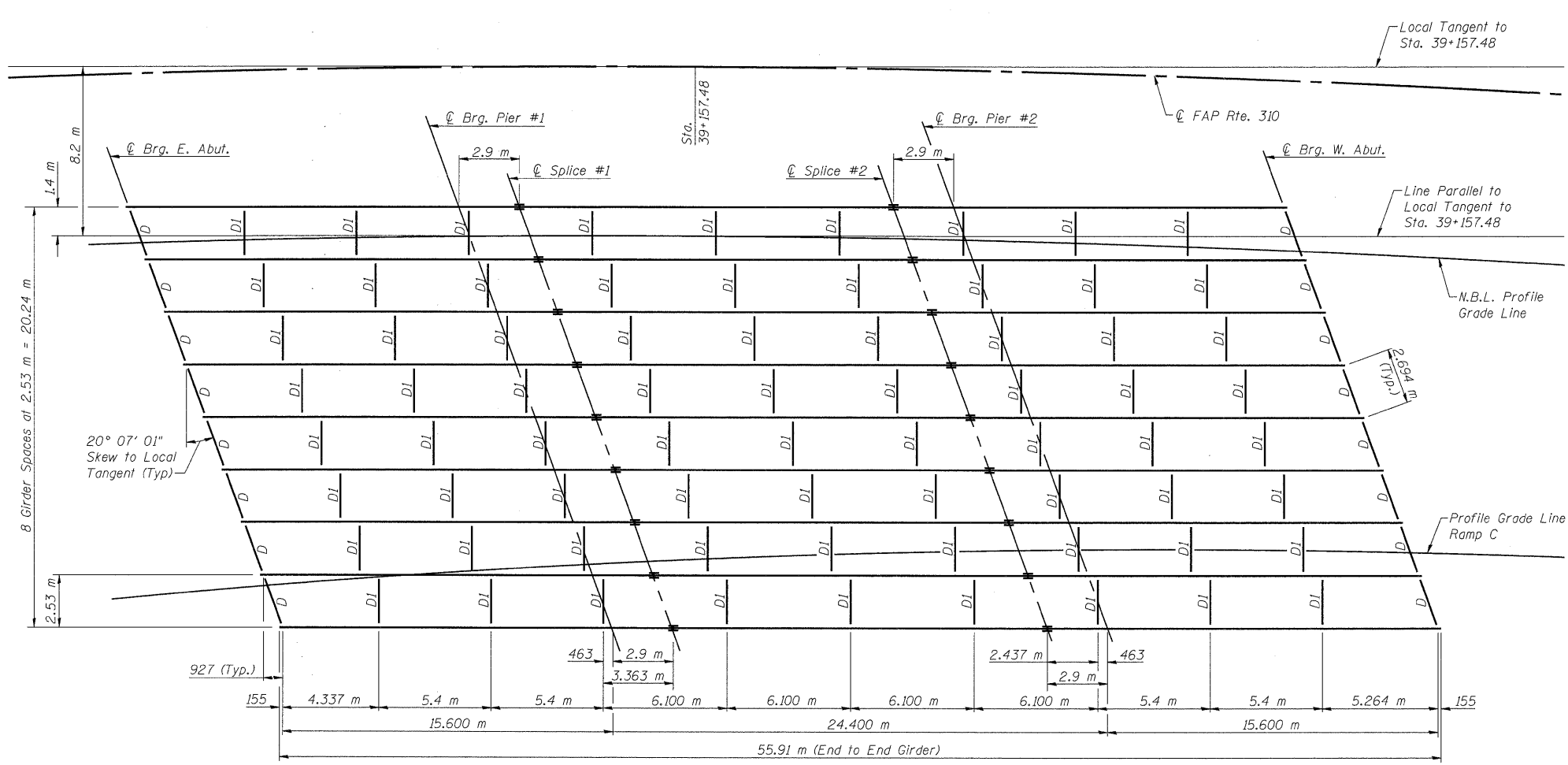
Ⓢ Indicates structural steel conforming to AASHTO M270M Grade 345.

Note: Work this sheet with sheet #17 of 36.

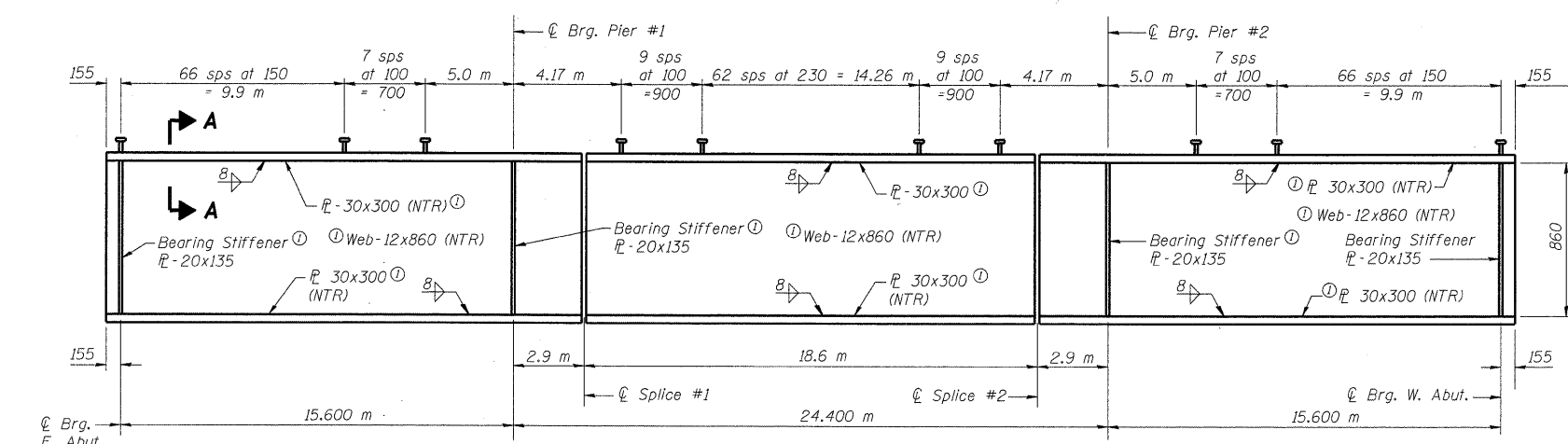
**FIELD SPLICE DETAIL**

**GIRDER DETAILS & FRAMING PLAN**  
 FAP RTE. 310 (IL RTE. 255) NB & RAMP C OVER  
 UNION PACIFIC & KANSAS CITY SOUTHERN R.R.  
 SECTION 60-15VB-1 & 2  
 MADISON COUNTY  
 STATION 39+160.297  
 STRUCTURE NUMBER 060-0310

Klingner & Assoc., P.C.



**FRAMING PLAN**



**GIRDER ELEVATION**

"NTR" denotes plates to which notch toughness requirements are applicable.

DESIGNED	ADL
CHECKED	WLW
DRAWN	ADL/DGM
CHECKED	WLW