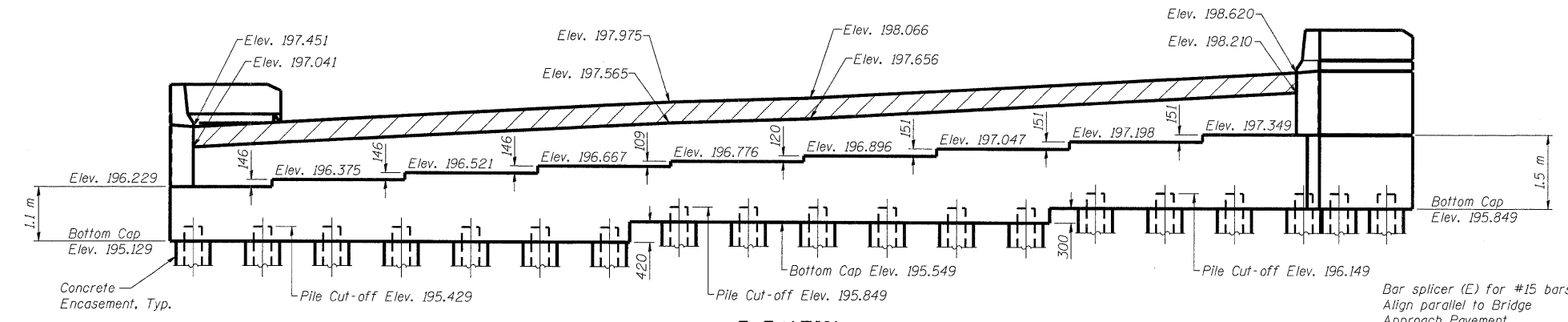


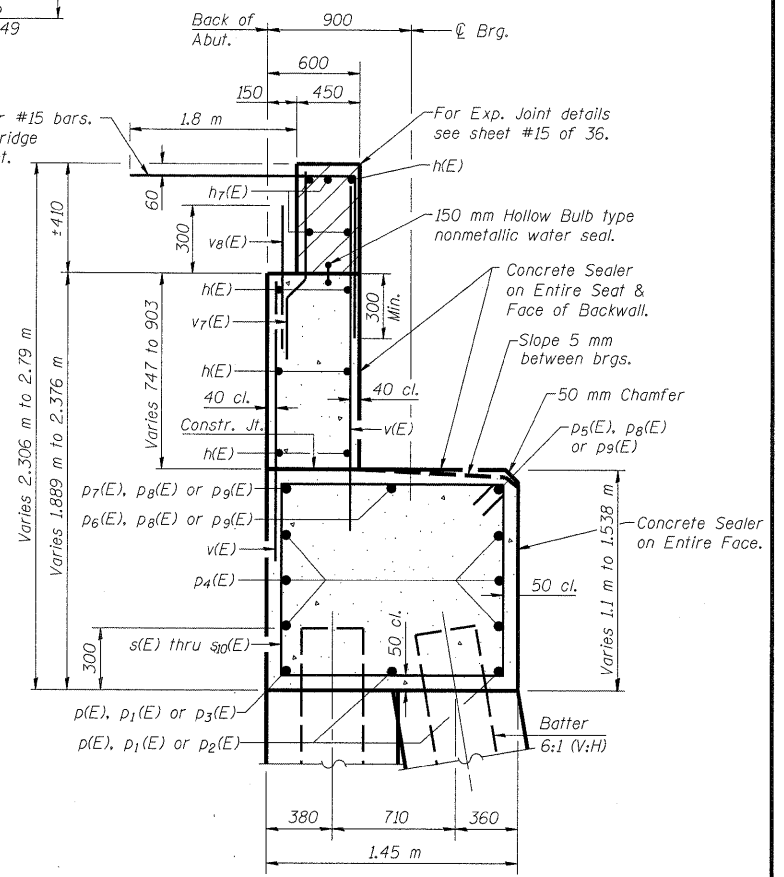
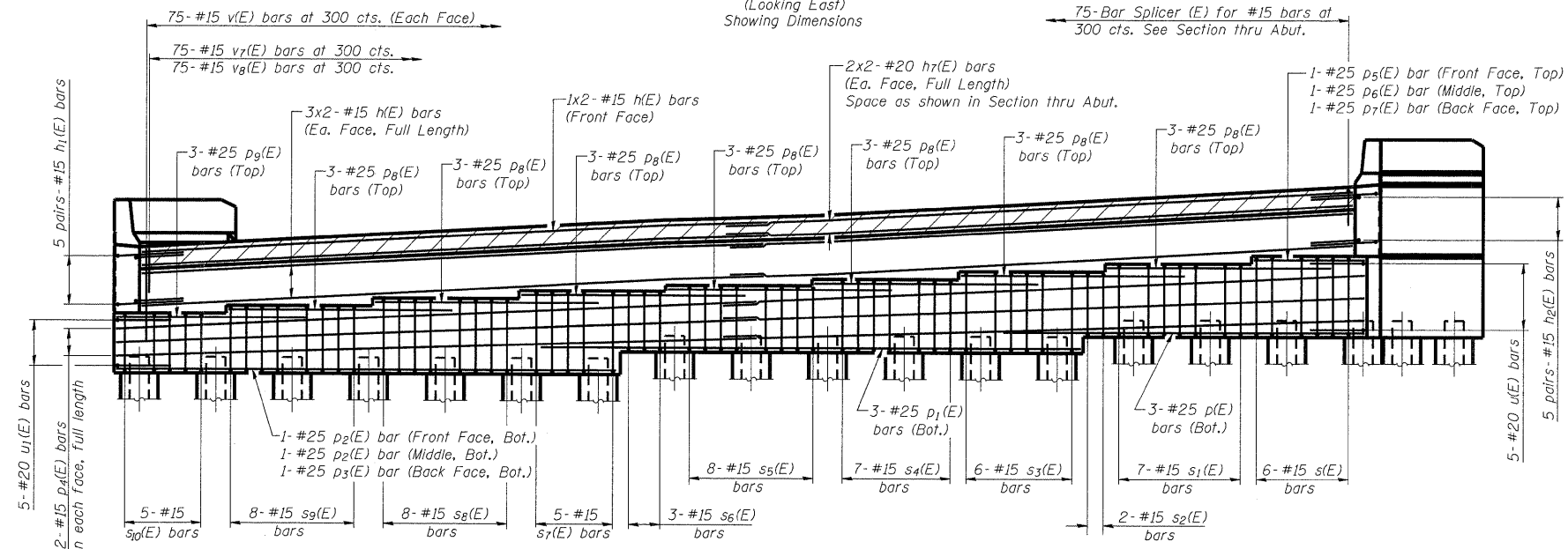
5/7/2009 10:30:13 AM
 P:\00F\les\000024\cfa\1-road-Br.dgn\SN0050-0310 P\ans\060-0310EasAbutment.dgn

ROUTE NO.	SECTION	COUNTY	SHEET	SHEET NO.
F.A.P. 310	*	MADISON	149	52
FED. ROAD DIST. NO. 7		ILLINOIS	FED. AID PROJECT	
Contract #76634		* 60-15VB-1 & 2		

36 SHEETS



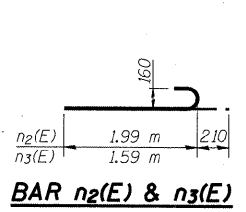
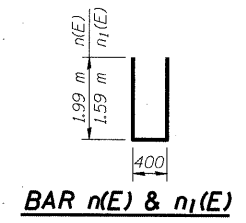
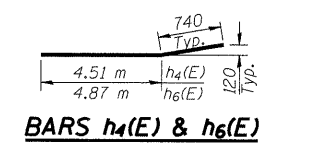
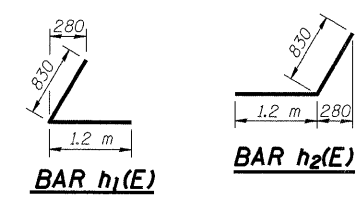
ELEVATION
(Looking East)
Showing Dimensions



SEC. THRU ABUT.
(Dimensions at Rt. L's to Abutment)

Notes:
 Bars indicated thus 3 x 2-#15 etc. indicates 3 lines of bars with 2 lengths per line.
 Work this sheet with sheets #20, 22 & 23 of 36.
 For Concrete Encasement Details, See Sheet #32 of 36.

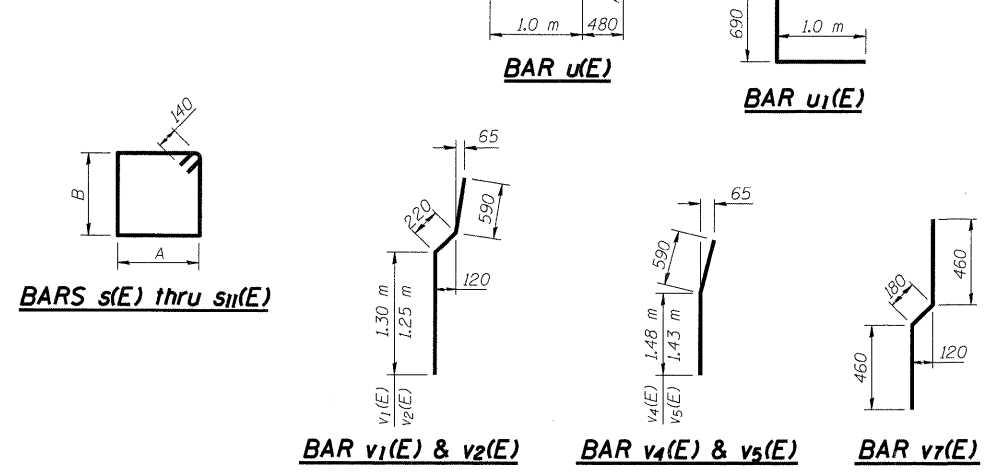
Min. Lap
#15 bars = 640
#20 bars = 790



A & B DIMENSIONS

Bar	A	B
s(E)	1.35 m	1.4 m
s1(E)	1.35 m	1.25 m
s2(E)	1.35 m	1.1 m
s3(E)	1.35 m	1.4 m
s4(E)	1.35 m	1.24 m
s5(E)	1.35 m	1.12 m
s6(E)	1.35 m	1.02 m
s7(E)	1.35 m	1.44 m
s8(E)	1.35 m	1.29 m
s9(E)	1.35 m	1.14 m
s10(E)	1.35 m	1.0 m
s11(E)	650	660

ELEVATION
(Looking East)
Showing Reinforcement



DESIGNED	ADL
CHECKED	WLW
DRAWN	RLW/ADL
CHECKED	WLW

EAST ABUTMENT DETAILS
 FAP RTE. 310 (IL RTE. 255) NB & RAMP C OVER
 UNION PACIFIC & KANSAS CITY SOUTHERN R.R.
 SECTION 60-15VB-1 & 2
 MADISON COUNTY
 STATION 39+160.297
 STRUCTURE NUMBER 060-0310