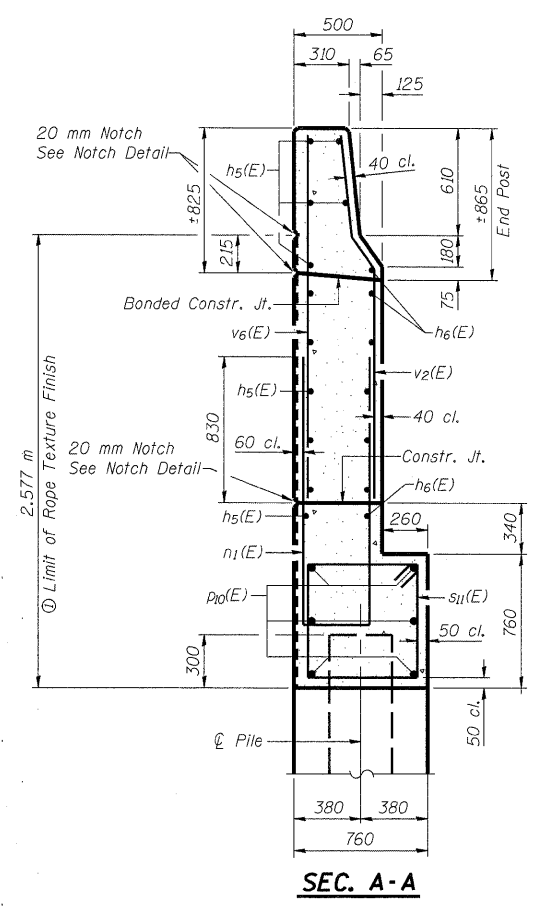
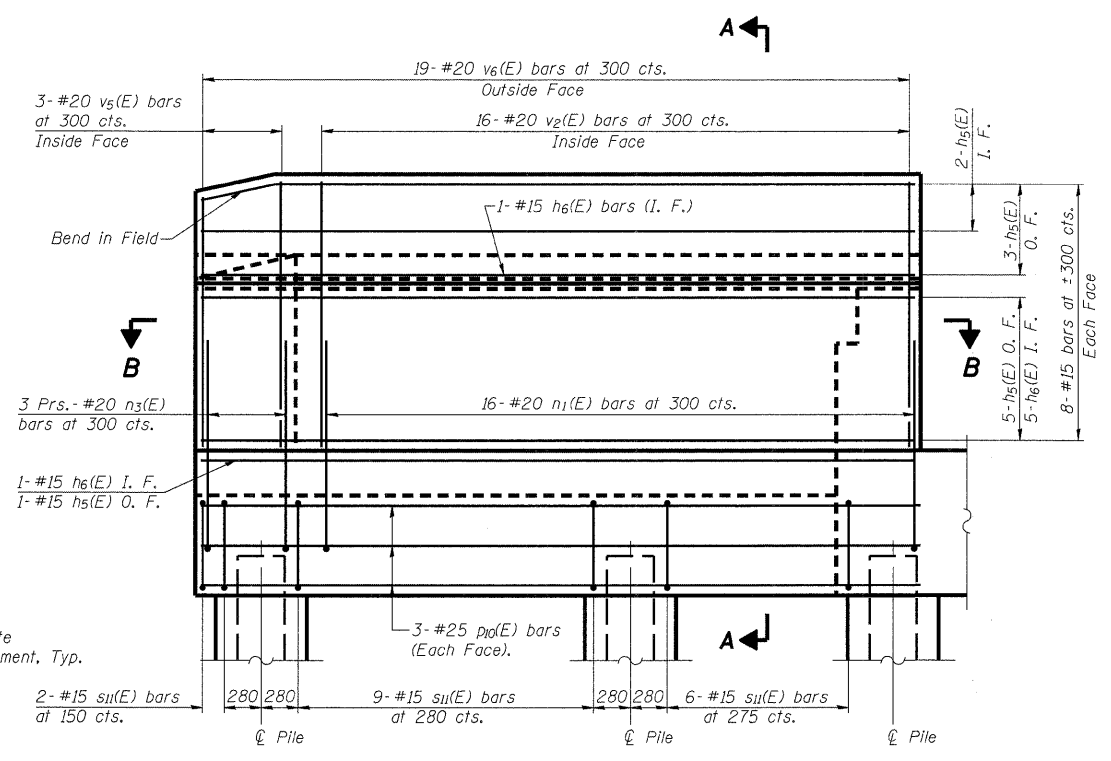
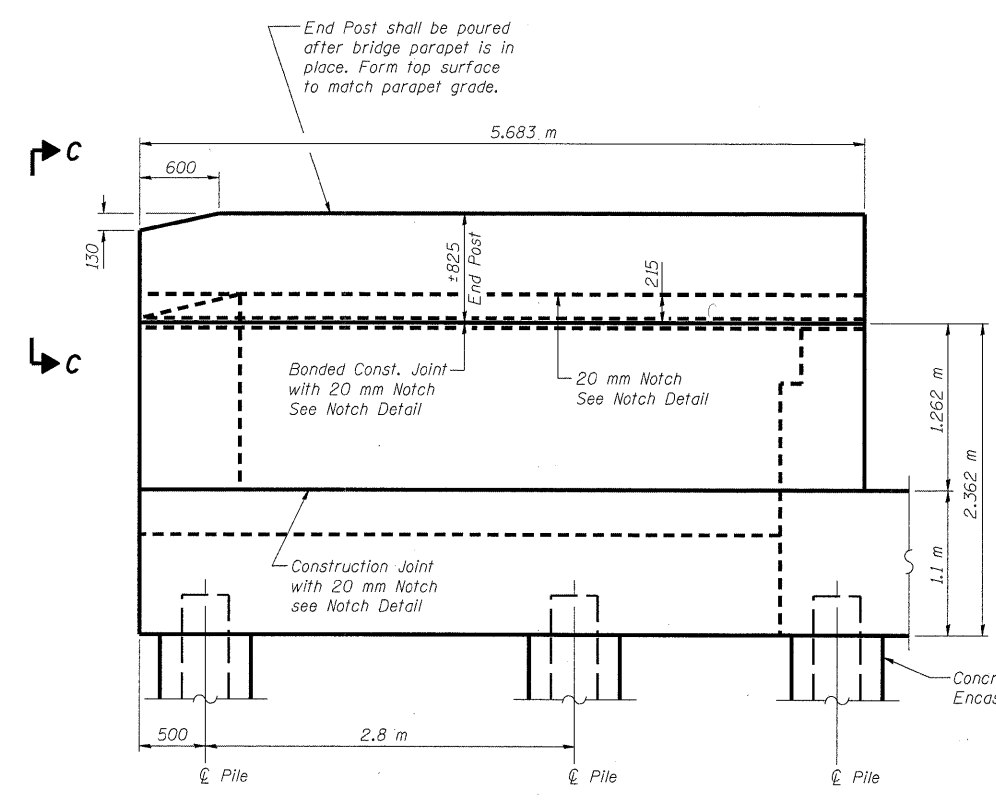
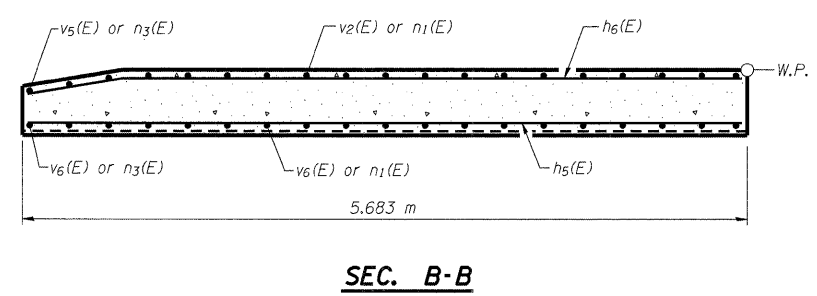
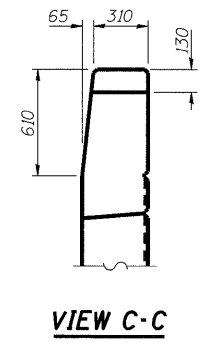
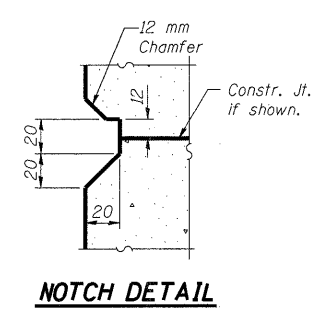


10:30:37 AM
p:\007\lea\0000024\Railroad-Bridge\SN060-0310\EastAbutment.dgn

ROUTE NO.	SECTION	COUNTY	SHEET NO.	SHEET	SHEET NO. 23
310	*	MADISON	149	54	36 SHEETS
FED. ROAD DIST. NO. 7		MILEPOST		FED. AID PROJECT	
				Contract #76634 * 60-15VB-1 & 2	



DESIGNED	ADL
CHECKED	WLW
DRAWN	RLW/ADL
CHECKED	WLW

Note:
Work this sheet with sheets #20, 21 & 22 of 36.
Quantity of concrete in end post included with Concrete Superstructure on sheet #14 of 36.

⊙ Patterned Rope Texture Concrete
(See Sheet #4 of 36 for details)

EAST ABUTMENT DETAILS
FAP RTE. 310 (IL RTE. 255) NB & RAMP C OVER
UNION PACIFIC & KANSAS CITY SOUTHERN R.R.
SECTION 60-15VB-1 & 2
MADISON COUNTY
STATION 39+160.297
STRUCTURE NUMBER 060-0310

Klingner & Assoc., P.C.