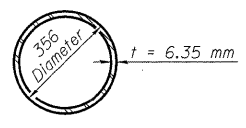
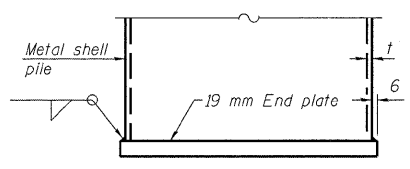


5/7/2009 10:32:50 AM p:\007iles\00002\4\road-bridge\SN060-0310 Plans\060-0310misc.dgn

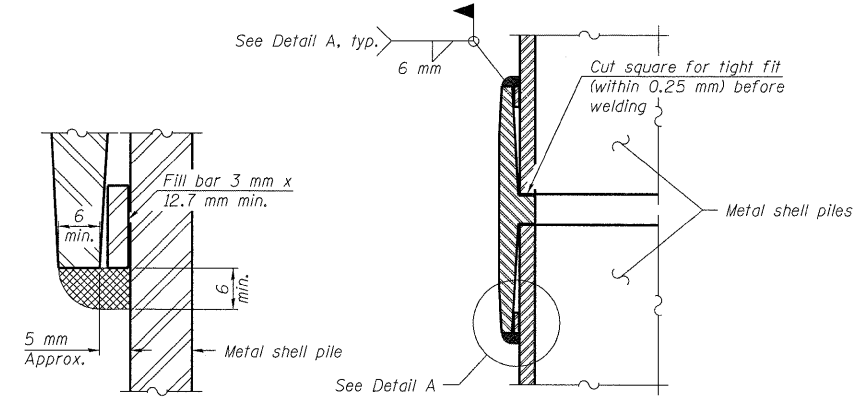
ROUTE NO.	SECTION	COUNT*	SHEETS	SHEET	SHEET NO. 32
F.A.P. 310	*	MADISON	149	63	36 SHEETS
FED. ROAD DIST. NO. 7		SUNSHINE		FED. AID PROJECT*	
Contract #76634		* 60-15VB-1 & 2			



METAL SHELL PILE



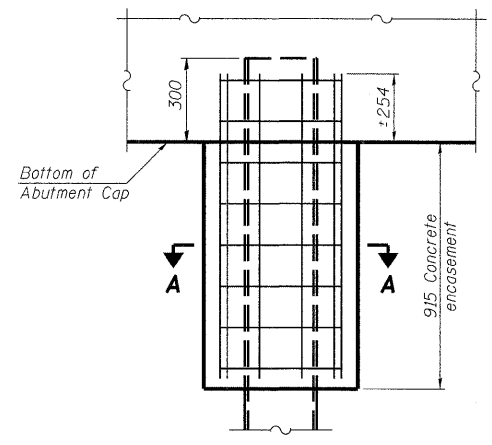
END PLATE ATTACHMENT



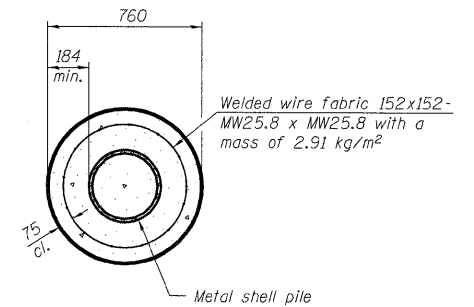
DETAIL A

Notes:
 The 3 x 12.7 mm min. fill bar may be constructed of 2 bars with a 3 mm max. gap between them.
 Pile segments shall be driven to solid contact with splicer before welding.

WELDED COMMERCIAL SPLICE



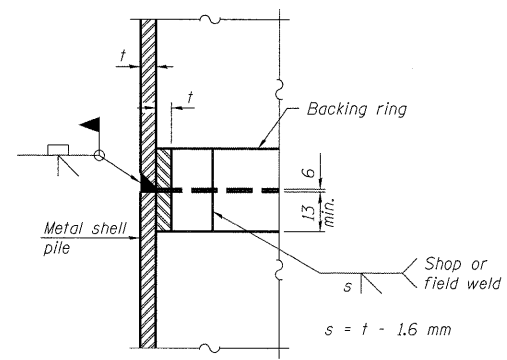
ELEVATION



SECTION A-A

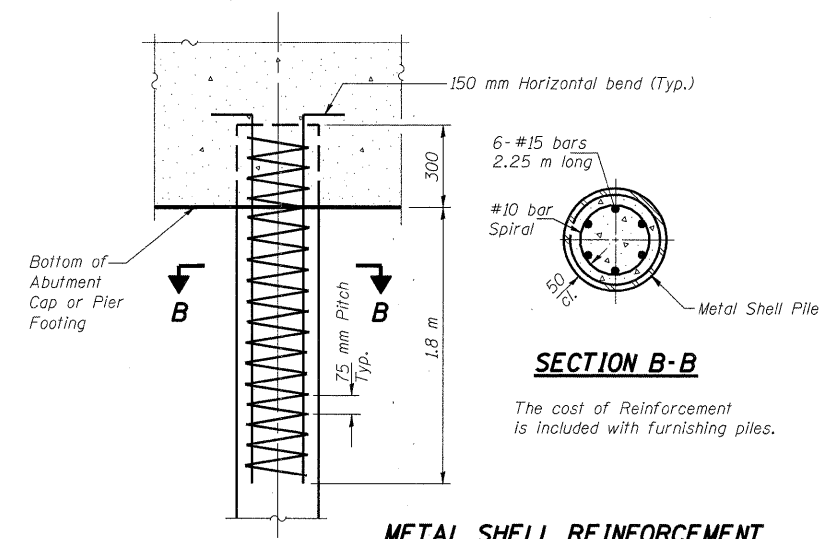
Notes:
 Forms for encasement may be omitted when soil conditions permit.

CONCRETE ENCASEMENT AT ABUTMENTS



COMPLETE PENETRATION WELD SPLICE

Backing ring made from pile shell. Remove segment to allow reducing circumference and vertically rejoin with partial joint penetration weld.



SECTION B-B

The cost of Reinforcement is included with furnishing piles.

METAL SHELL REINFORCEMENT AT ABUTMENTS & PIERS

DESIGNED	ADL
CHECKED	WLW
DRAWN	ADL/DGM
CHECKED	WLW

Note:
 The metal shell piles shall be according to ASTM A 252 Grade 3.

PILE DETAILS
 FAP RTE. 310 (IL RTE. 255) NB & RAMP C OVER
 UNION PACIFIC & KANSAS CITY SOUTHERN R.R.
 SECTION 60-15VB-1 & 2
 MADISON COUNTY
 STATION 39+160.297
 STRUCTURE NUMBER 060-0310

Klingner & Assoc., P.C.