

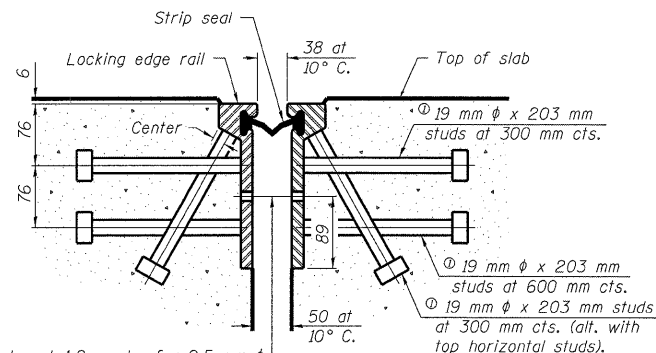
5/7/2009 10:54:29 AM

p:\001\es\00002\A\Road\Road-Br\rdge\SN060-0311\Plens\060-0311misc.dgn

ROUTE NO.	SECTION	COUNTY	SHEETS	SHEET	SHEET NO. 18
F.A.P. 310	*	MADISON	149	85	45 SHEETS
FED. ROAD DIST. NO. 7	ILLINOIS	FED. AID PROJECT			

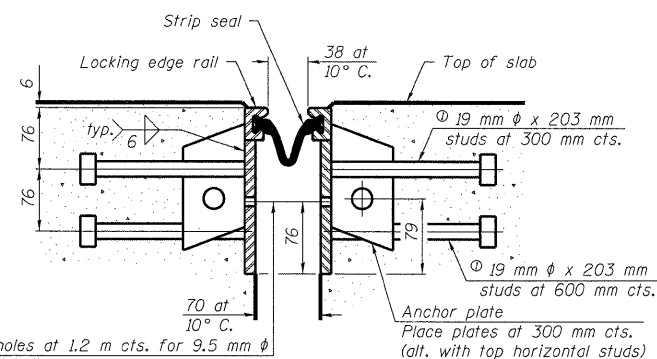
Contract #76634
* 60-15VB-1 & 2

⊙ Granular or solid flux filled headed studs conforming to Article 1006.32 of the Std. Specs., automatically end welded.



11 mm ϕ holes at 1.2 m cts. for 9.5 mm ϕ bolts. All bolts shall be burned, sawed, or chipped off flush with the plates after forms are removed, typ.

**SECTION THRU
ROLLED RAIL JOINT**

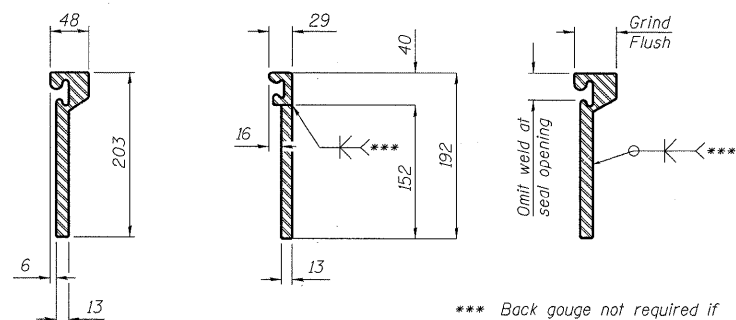


11 mm ϕ holes at 1.2 m cts. for 9.5 mm ϕ bolts. All bolts shall be burned, sawed, or chipped off flush with the plates after forms are removed, typ.

**SECTION THRU
WELDED RAIL JOINT**

Notes:

The strip seal shall be made continuous and shall have a minimum thickness of 6 mm. The configuration of the strip seal shall match the configuration of the Locking Edge Rails. Open or "webbed" strip seal gland configurations are not permitted. The gland shall be sized for a maximum rated movement of 102 mm. The height and thickness of the Locking Edge Rails shown are minimum dimensions. The actual configuration of the Locking Edge Rails and matching strip seal may vary from manufacturer to manufacturer. Flanged edge rails will not be allowed. Locking Edge Rails may be spliced at slope discontinuities and stage construction joints. The manufacturer's recommended installation methods shall be followed. The joint opening and deck dimensions detailed on the superstructure are based on a rolled rail expansion joint. If the Contractor elects to use the welded rail expansion joint, the opening and deck dimensions shall be modified according to the dimensions detailed on this sheet. Required modifications shall be made at no additional cost to the State. All steel components shall be galvanized after fabrication according to Article 520.03 of the Standard Specifications.



**ROLLED
(EXTRUDED) RAIL**

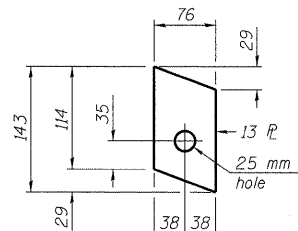
WELDED RAIL

**LOCKING EDGE
RAIL SPLICE**

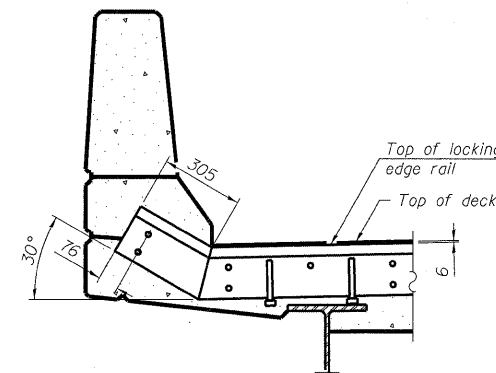
*** Back gouge not required if complete joint penetration is verified by mock-up.

The inside of the locking edge rail groove shall be free of weld residue.

LOCKING EDGE RAILS



**ANCHOR PLATE
(for welded rail)**



**AT PARAPET
END TREATMENT**

BILL OF MATERIAL

Item	Unit	Total
Prefomed Joint Strip Seal	m	44.6

DESIGNED	ADL
CHECKED	WLW
DRAWN	KTH
CHECKED	WLW

**PREFORMED JOINT STRIP SEAL
FAP RTE. 310 (IL RTE. 255) SB & RAMP D OVER
UNION PACIFIC & KANSAS CITY SOUTHERN R.R.
SECTION 60-15VB-1 & 2
MADISON COUNTY
STATION 39+160.297
STRUCTURE NUMBER 060-0311**