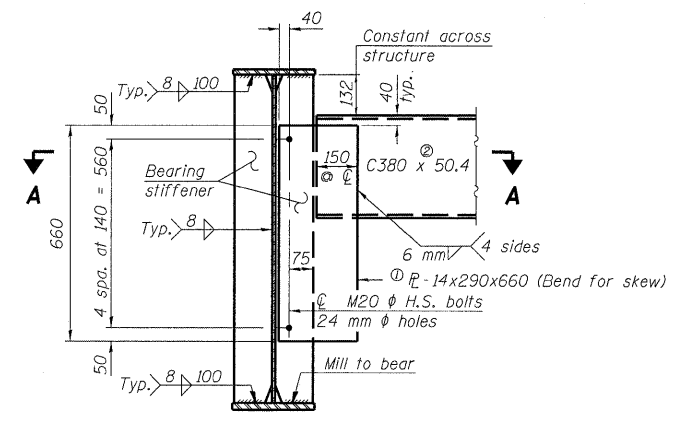


5/7/2009 10:47:28 AM

p:\001\es\000022\arRailroad\road-Bridge\SN060-0311 Plans\060-0311 Framing Plans.dgn

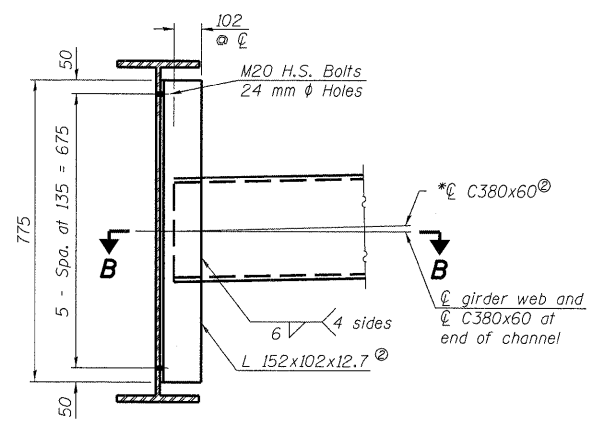
ROUTE NO.	SECTION	COUNTY	TOTAL SHEETS	SHEET NO.	SHEET NO. 22
S. R. I.	*	MADISON	149	89	45 SHEETS
F. A. P. 310					
FED. ROAD DIST. NO. 7	ILLINOIS	FED. AID PROJECT-			
Contract #76634					
* 60-15VB-1 & 2					

*Alternate C380x74 channels are permitted to facilitate material acquisition. Calculated weight of structural steel is based on the lighter section. The alternate, if utilized, shall be provided at no extra cost to the Department.



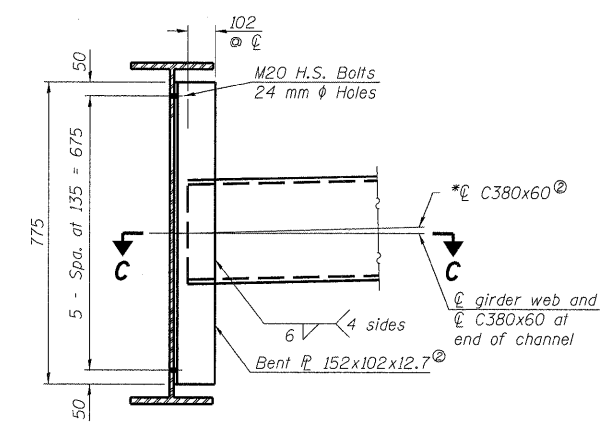
END DIAPHRAGMS D, D1 & D2
(18 Required)

Note:
Two hardened washers required for each set of oversized holes.



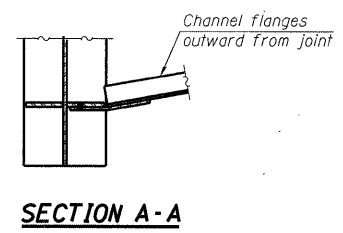
INTERIOR DIAPHRAGM D3
(54 Required)

Note:
Two hardened washers required for each set of oversized holes.
All diaphragms shall be installed as steel is erected and secured with erection pins and bolts except as otherwise noted. Individual diaphragms at supports may be temporarily disconnected to install bearing anchor bolts.

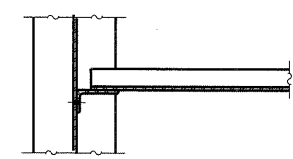


INTERIOR DIAPHRAGMS, D4 THRU D33
(30 Required)

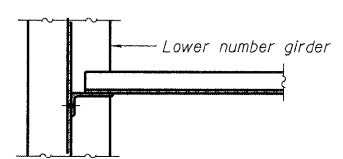
Note:
Two hardened washers required for each set of oversized holes.
All diaphragms shall be installed as steel is erected and secured with erection pins and bolts except as otherwise noted. Individual diaphragms at supports may be temporarily disconnected to install bearing anchor bolts.



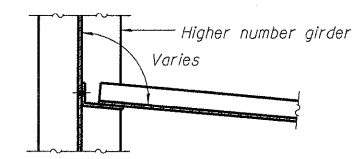
SECTION A-A



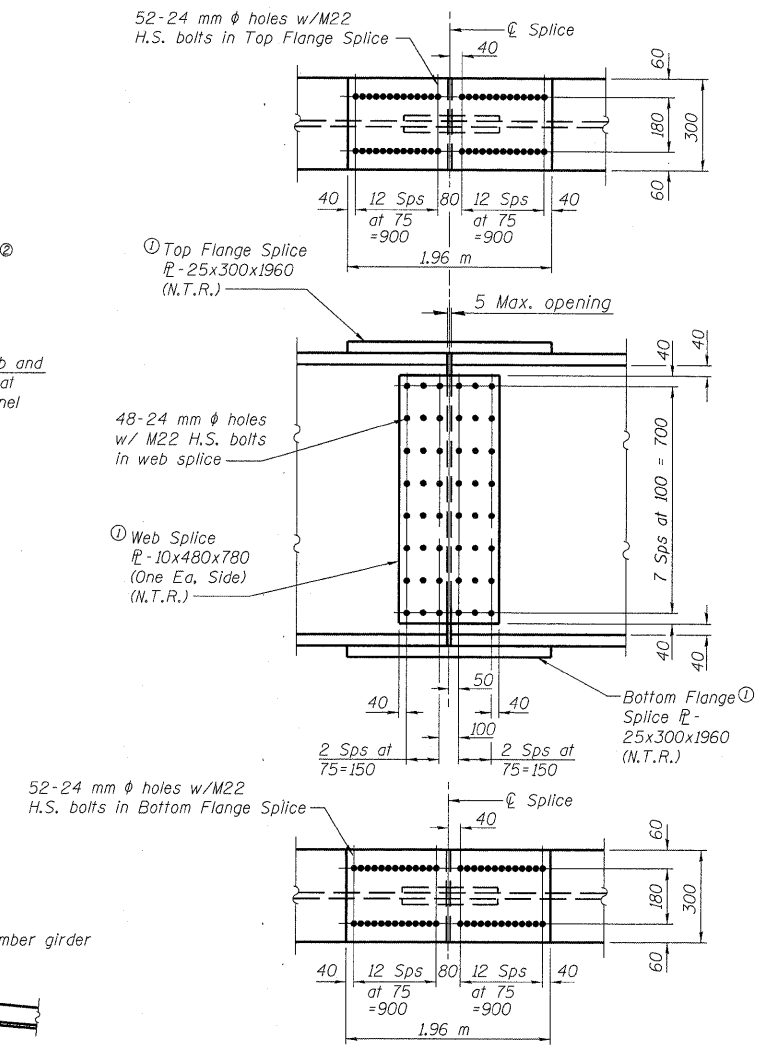
SECTION B-B



SECTION C-C
(At lower number girder)



SECTION C-C
(At higher number girder)



FIELD SPLICE DETAIL
(Typical for all girders)

① Indicates structural steel conforming to AASHTO M270M Grade 345.
② Indicates structural steel conforming to AASHTO M270M Grade 250.

DESIGNED	ADL
CHECKED	WLW
DRAWN	RJP
CHECKED	WLW

GIRDER DETAILS
FAP RTE 310 (IL RTE 255) SB & RAMP D OVER
UNION PACIFIC & KANSAS CITY SOUTHERN R.R.
SECTION 60-15VB-1 & 2
MADISON COUNTY
STATION 39+160.297
STRUCTURE NUMBER 060-0311