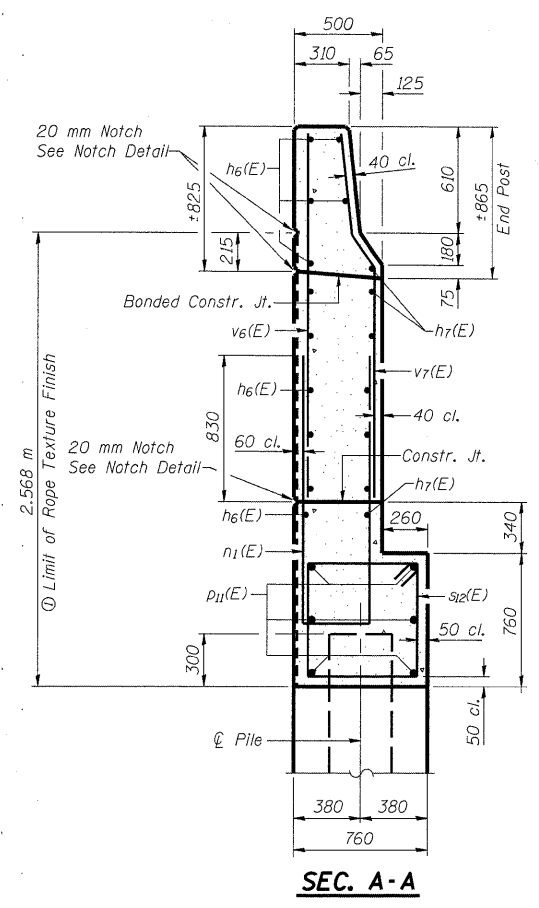
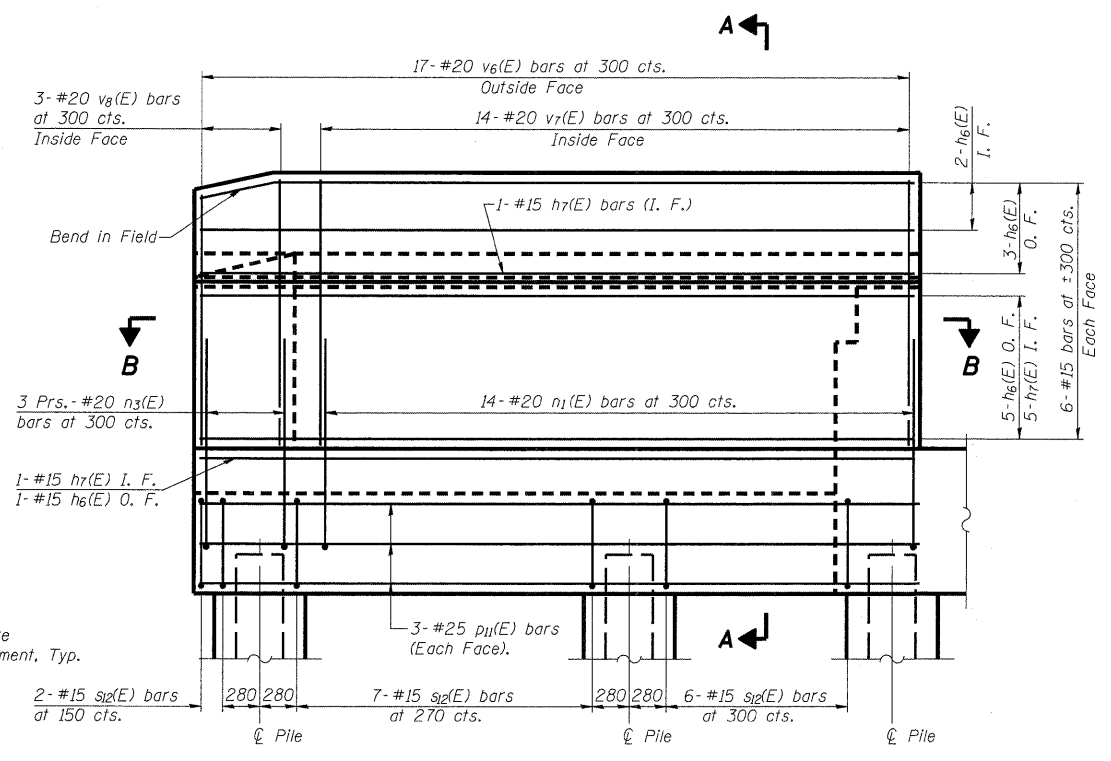
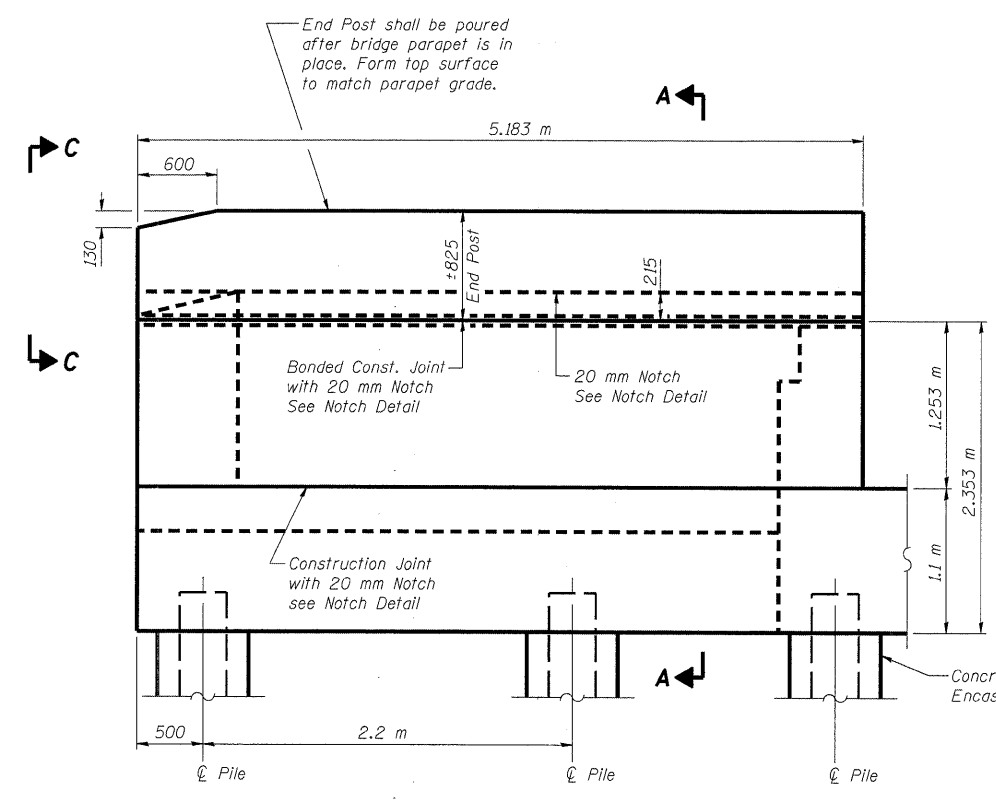
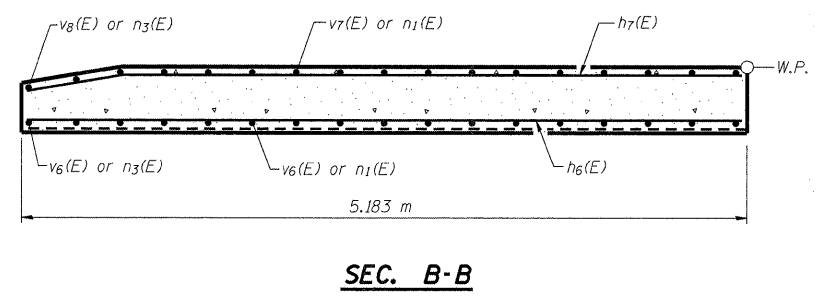
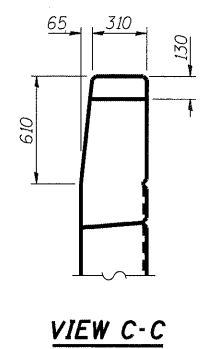
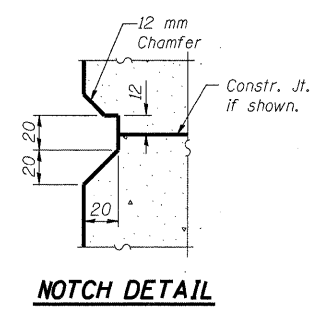


10:53:36 AM
 p:\00f.ies\000024\offrail-road-Bridge\N060-0311\Plans\060-0311\Estab\abutment.dgn

ROUTE NO.	SECTION	COUNTY	TOTAL SHEETS	SHEET	SHEET NO. 31
310	#	MADISON	149	98	45 SHEETS
FED. ROAD DIST. NO. 7		ILLINOIS	FED. AID PROJECT		

Contract #76634
* 60-15VB-1 & 2



⊙ Patterned Rope Texture Concrete
(See Sheet #4 of 45 for details)

Note:
Work this sheet with sheets #28, 29 & 30 of 45.
Quantity of concrete in end post included with Concrete Superstructure on sheet #16 of 45.

DESIGNED	ADL
CHECKED	WLW
DRAWN	RJP
CHECKED	WLW

EAST ABUTMENT DETAILS
FAP RTE. 310 (IL RTE. 255) SB & RAMP D OVER
UNION PACIFIC & KANSAS CITY SOUTHERN R.R.
SECTION 60-15VB-1 & 2
MADISON COUNTY
STATION 39+160.297
STRUCTURE NUMBER 060-0311

Klingner & Assoc., P.C.