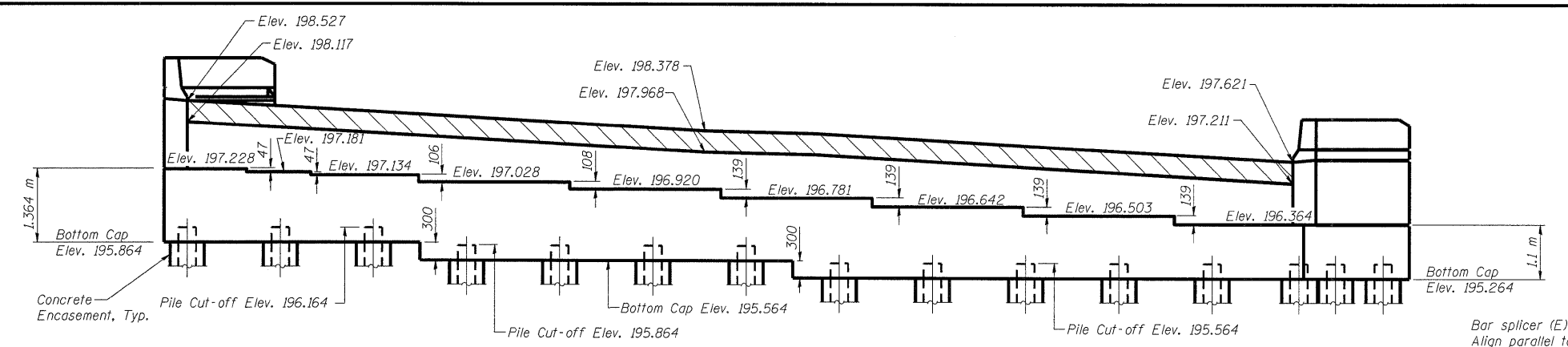


11:06:46 AM  
5/7/2009

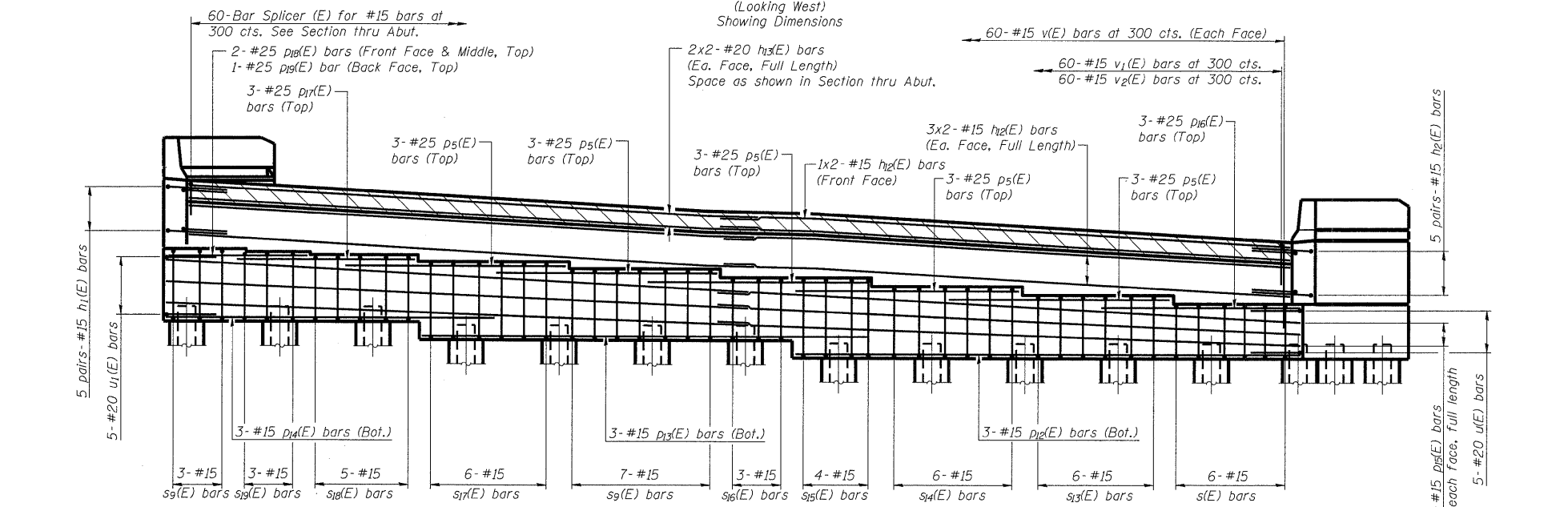
ps:\001\es\000022\001\road\Bridges\SN060-0311\est\abutment.dgn

ROUTE NO.	SECTION	COUNTY	SHEET	SHEET NO. 33
F.A.P. 310	*	MADISON	149	100
FED. ROAD DIST. NO. 7		ILLINOIS	FED. AID PROJECT	

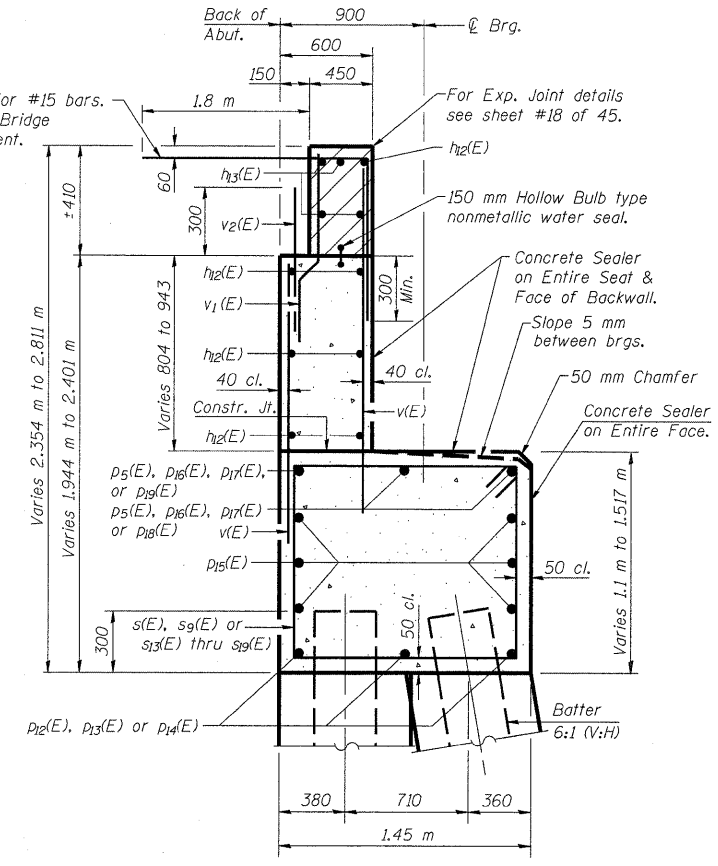
Contract #76634  
\* 60-15VB-1 & 2



**ELEVATION**  
(Looking West)  
Showing Dimensions



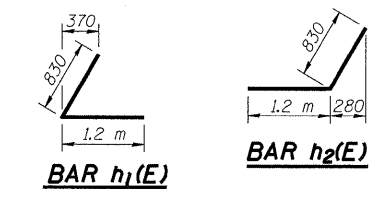
**ELEVATION**  
(Looking West)  
Showing Reinforcement



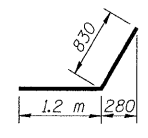
**SEC. THRU ABUT.**  
(Dimensions at Rt. L's to Abutment)

Notes:  
Bars indicated thus 3 x 2-#15 etc. indicates 3 lines of bars with 2 lengths per line.  
Work this sheet with sheets #32, 34 & 35 of 45.  
For Concrete Encasement Details, See Sheet #40 of 45.

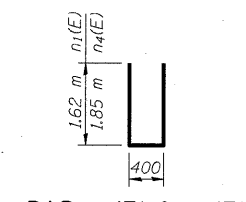
Min. Lap
#15 bars = 640
#20 bars = 790



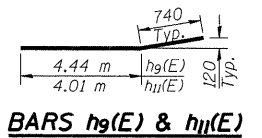
**BAR h1(E)**



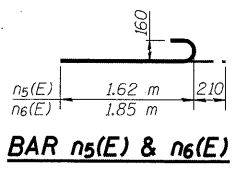
**BAR h2(E)**



**BAR n1(E) & n4(E)**



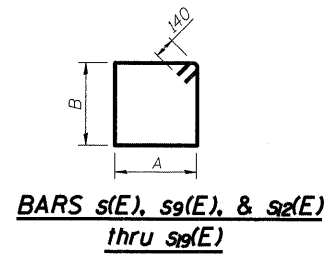
**BARS h9(E) & h11(E)**



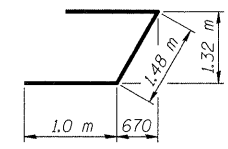
**BAR n5(E) & n6(E)**

**A & B DIMENSIONS**

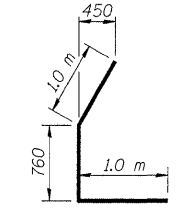
Bar	A	B
s(E)	1.35 m	1.00 m
s9(E)	1.35 m	1.26 m
s12(E)	650	660
s13(E)	1.35 m	1.14 m
s14(E)	1.35 m	1.28 m
s15(E)	1.35 m	1.42 m
s16(E)	1.35 m	1.12 m
s17(E)	1.35 m	1.36 m
s18(E)	1.35 m	1.17 m
s19(E)	1.35 m	1.22 m



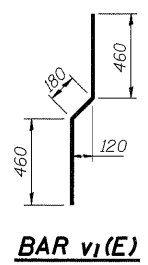
**BARS s(E), s9(E), & s12(E) thru s19(E)**



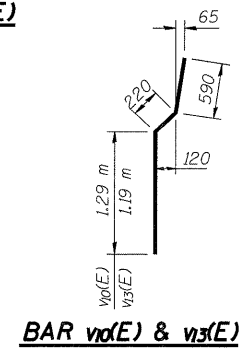
**BAR u(E)**



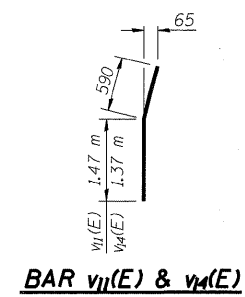
**BAR u1(E)**



**BAR v1(E)**



**BAR v10(E) & v13(E)**



**BAR v11(E) & v14(E)**

**WEST ABUTMENT DETAILS**  
FAP RTE. 310 (IL RTE. 255) SB & RAMP D OVER  
UNION PACIFIC & KANSAS CITY SOUTHERN R.R.  
SECTION 60-15VB-1 & 2  
MADISON COUNTY  
STATION 39+160.297  
STRUCTURE NUMBER 060-0311