

ROUTE NO.	SECTION	COUNTY	SHEETS	SHEET NO.
S.B.L.	F.A.P. 310	MADISON	149	103
FED. ROAD DIST. NO. 7	ILLINOIS	FED. AID PROJECT		

Contract #76634
* 60-15VB-1 & 2

Local Tangent to
FAP 310 at
Sta. 39+157.480

Notes:
Work this sheet with sheet #37 of 45.
Space reinforcement in cap to miss anchor bolts.
Pour steps monolithically with cap.
All edges shall have standard 20 mm chamfer except as noted.
Minimum Spiral lap = 800 mm.
Spiral Laps not included in Bill of Materials.
Cost of Spiral Laps and #15 spacers shall be included in cost of "Reinforcement Bars, Epoxy Coated".
See sheet #37 of 45 for bar details.
See sheet #37 of 45 for Sections A-A.
See sheet #37 of 45 for Sections B-B.
See sheet #40 of 45 for pile details.
Pier protection crash wall design complies with the requirements of AREMA Chapter 8, Part 2, Section 2.1.5.1.

MIN. BAR LAPS

- #15 bars = 890
- #20 bars = 1.11 m
- #25 bars = 1.85 m
- #30 bars = 2.59 m

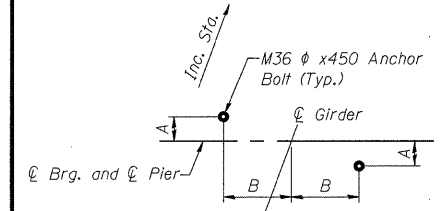
PILE DATA

Type & Size: Metal Shell - 356 mm φ x 6.35 mm walls
Nominal Required Bearing: 1500 kN
Allowable Resistance Available: 500 kN
Est. Length: 12.0 m
No. Required: 39 + 1 Test Pile

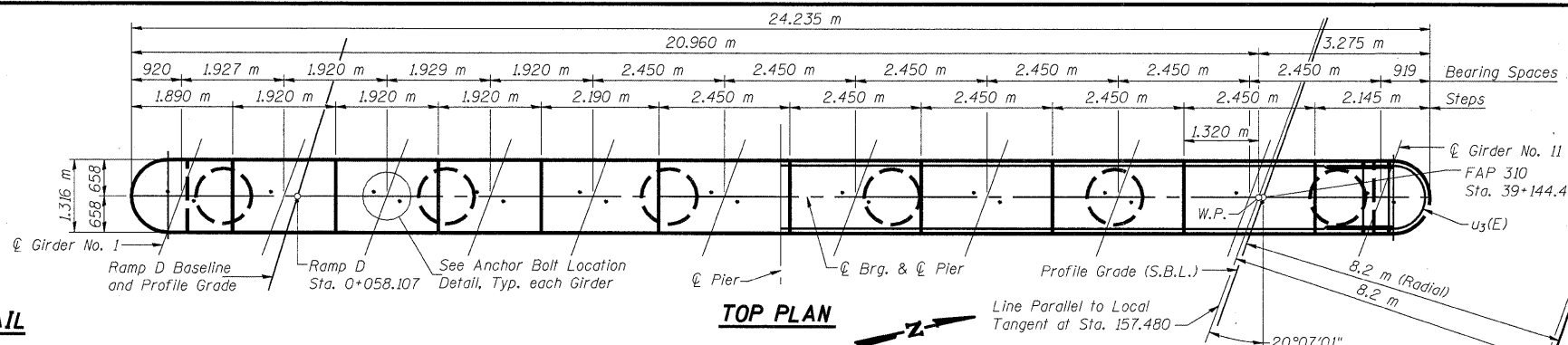
Spirals:

① Provide 1 1/2 extra turns top and bottom. Extend spiral 50 mm into pier cap. Provide 4-#15 spacers or equivalent.

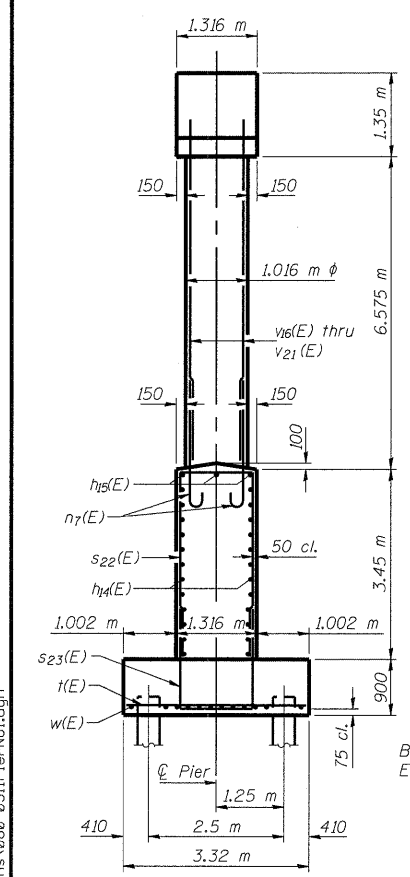
PIER #1
FAP RTE. 310 (IL RTE. 255) SB & RAMP D OVER
UNION PACIFIC & KANSAS CITY SOUTHERN R.R.
SECTION 60-15VB-1 & 2
MADISON COUNTY
STATION 39+160.297
STRUCTURE NUMBER 060-0311



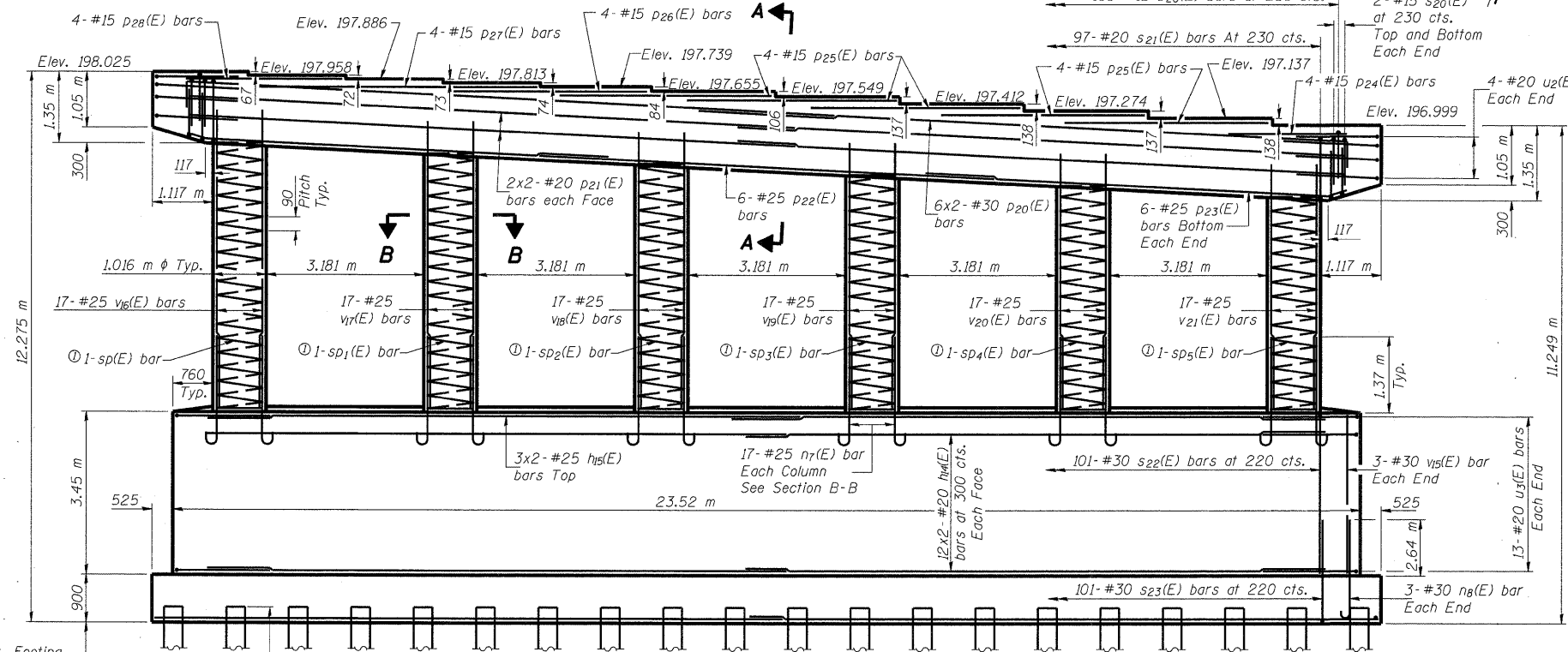
ANCHOR BOLT LOCATION DETAIL
(See Anchor Bolt Location Table)



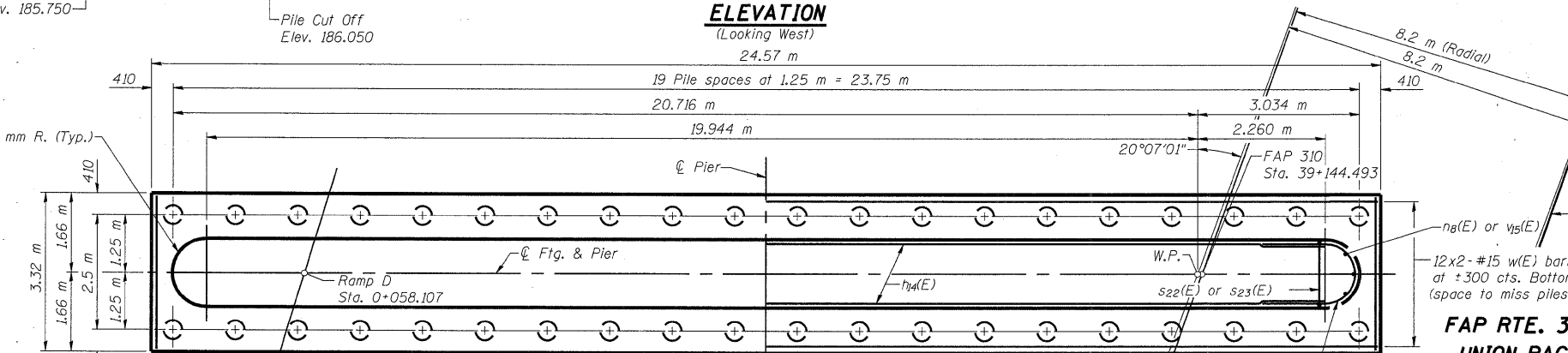
TOP PLAN



END VIEW



ELEVATION
(Looking West)



FOOTING PLAN

ANCHOR BOLT LOCATION TABLE

Girder	A	B
Girder 1	93	183
Girder 2	87	185
Girder 3	82	188
Girder 4	76	190
Girders 5-11	71	193

DESIGNED	ADL
CHECKED	WLW
DRAWN	RJP
CHECKED	WLW

p:\001_ies\000024\cfa\road-br\dgs\SN060-0311\PierNo1.dgn