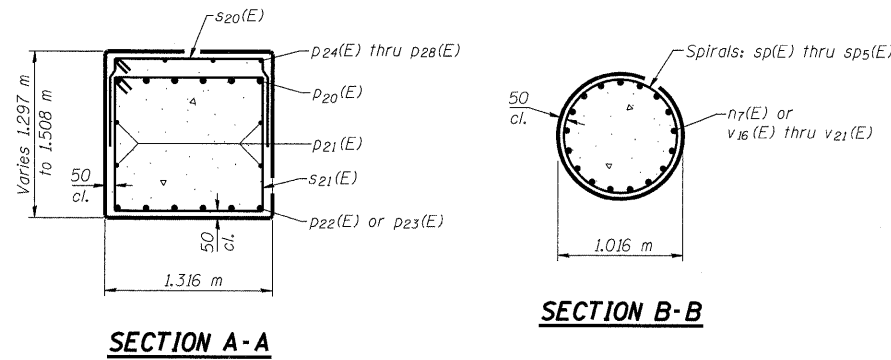


ROUTE NO.	SECTION	COUNTY	SHEET NO.	SHEET
F.A.P. 310	*	MADISON	149	104
FED. ROAD DIST. NO. 7		ILLINOIS	FED. AID PROJECT	

Contract #76634  
\* 60-15VB-1 & 2

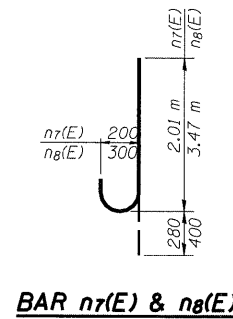
SHEET NO. 37  
45 SHEETS



**PIER #1 BILL OF MATERIAL**

Bar	No.	Size	Length (m)	Shape
h4(E)	48	#20	11.70	—
h5(E)	6	#25	12.05	—
n7(E)	102	#25	2.29	U
n8(E)	6	#30	3.87	U
p20(E)	12	#30	13.58	L
p21(E)	8	#20	12.11	—
p22(E)	6	#25	8.70	—
p23(E)	12	#25	9.10	—
p24(E)	4	#15	2.34	—
p25(E)	20	#15	3.06	—
p26(E)	4	#15	2.80	—
p27(E)	4	#15	4.45	—
p28(E)	4	#15	3.15	—
s20(E)	108	#15	3.29	□
s21(E)	97	#20	5.14	□
s22(E)	101	#30	7.91	□
s23(E)	101	#30	8.15	□
* sp(E)	1	#15	6.62	—
* sp1(E)	1	#15	6.43	—
* sp2(E)	1	#15	6.24	—
* sp3(E)	1	#15	6.04	—
* sp4(E)	1	#15	5.85	—
* sp5(E)	1	#15	5.66	—
r(E)	118	#25	3.22	—
u2(E)	8	#20	4.24	U
u3(E)	26	#20	4.21	U
v15(E)	6	#30	3.37	—
v16(E)	17	#25	7.13	—
v17(E)	17	#25	6.94	—
v18(E)	17	#25	6.75	—
v19(E)	17	#25	6.55	—
v20(E)	17	#25	6.36	—
v21(E)	17	#25	6.17	—
w(E)	24	#15	12.68	—
Structure Excavation		m <sup>3</sup>	406	
Concrete Structures		m <sup>3</sup>	256.6	
Reinforcement Bars (Epoxy Coated)		kg	22,420	
Furnishing Metal Shell Piles 356mmX6.35mm		m	468.0	
Driving Piles		m	468.0	
Test Pile Metal Shells		Each	1	

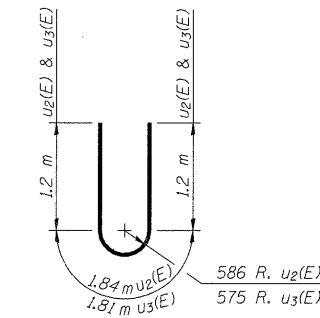
\*Length is height of spiral.



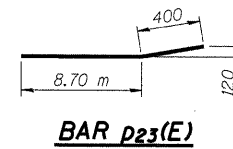
**BARS s20(E), s22(E), s23(E)**

**A & B DIMENSIONS**

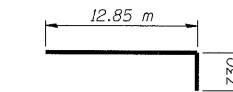
Bar	A	B
s20(E)	1.21 m	1.04 m
s22(E)	1.21 m	3.35 m
s23(E)	1.21 m	3.47 m



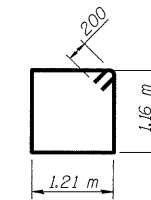
**BARS u2(E) & u3(E)**



**BAR p23(E)**



**BAR p20(E)**



**BAR s21(E)**

DESIGNED	ADL
CHECKED	WLW
DRAWN	RJP
CHECKED	WLW

**PIER #1 DETAILS**  
FAP RTE. 310 (IL RTE. 255) SB & RAMP D OVER  
UNION PACIFIC & KANSAS CITY SOUTHERN R.R.  
SECTION 60-15VB-1 & 2  
MADISON COUNTY  
STATION 39+160.297  
STRUCTURE NUMBER 060-0311

Klingner & Assoc., P.C.

p:\001\ies\2000024\road\road-bridge\SN060-0311\Pier-No1.dgn