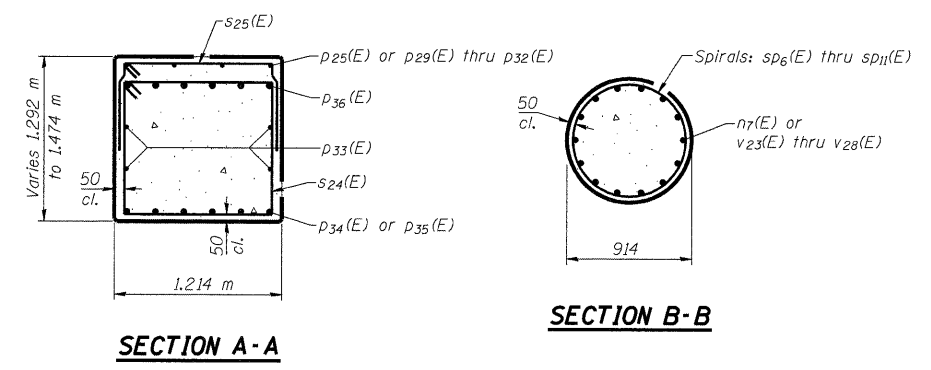


ROUTE NO.	SECTION	COUNTY	SHEETS	SHEET	SHEET NO. 39
F.A.P. 310	#	MADISON	149	106	45 SHEETS
FED. ROAD DIST. NO. 7	ILLINOIS	FED. AID PROJECT			

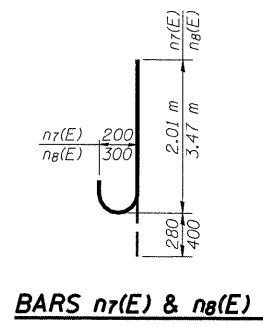
Contract #76634
* 60-15VB-1 & 2



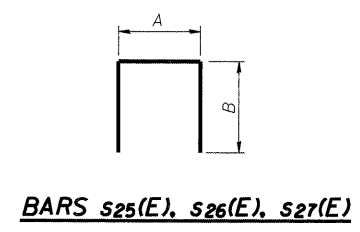
PIER #2 BILL OF MATERIAL

Bar	No.	Size	Length (m)	Shape
h6(E)	48	#20	10.56	—
h7(E)	6	#25	10.93	—
n7(E)	84	#25	2.29	U
n8(E)	6	#30	3.87	U
p25(E)	20	#15	3.06	—
p29(E)	4	#15	2.15	—
p30(E)	4	#15	2.39	—
p31(E)	4	#15	2.85	—
p32(E)	4	#15	2.55	—
p33(E)	8	#20	9.85	—
p34(E)	6	#25	7.45	—
p35(E)	12	#25	7.85	—
p36(E)	12	#30	11.33	—
s24(E)	63	#20	4.94	□
s25(E)	73	#15	3.19	□
s26(E)	82	#30	7.97	□
s27(E)	82	#30	8.04	□
* sp6(E)	1	#15	6.38	MM
* sp7(E)	1	#15	6.20	MM
* sp8(E)	1	#15	6.03	MM
* sp9(E)	1	#15	5.85	MM
* sp10(E)	1	#15	5.67	MM
* sp11(E)	1	#15	5.50	MM
t(E)	114	#25	3.22	—
u4(E)	8	#20	4.08	U
u5(E)	26	#20	4.05	U
v22(E)	6	#30	3.43	—
v23(E)	14	#25	6.89	—
v24(E)	14	#25	6.71	—
v25(E)	14	#25	6.54	—
v26(E)	14	#25	6.36	—
v27(E)	14	#25	6.18	—
v28(E)	14	#25	6.01	—
w1(E)	24	#25	12.76	—
w2(E)	22	#30	3.51	—
Structure Excavation		m ³	326	
Concrete Structures		m ³	216.8	
Reinforcement Bars (Epoxy Coated)		kg	19,960	
Furnishing Metal Shell Piles 356mmX6,35mm		m	792.0	
Driving Piles		m	792.0	

*Length is height of spiral.



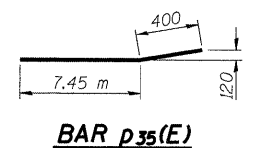
BARS n7(E) & n8(E)



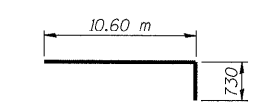
BARS s25(E), s26(E), s27(E)

A & B DIMENSIONS

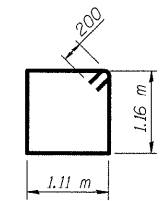
Bar	A	B
s25(E)	1.11 m	1.04 m
s26(E)	1.11 m	3.43 m
s27(E)	1.11 m	3.47 m



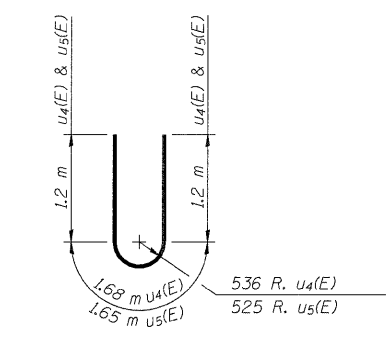
BAR p35(E)



BAR p36(E)



BARS s24(E)



BARS u4(E) & u5(E)

p:\00f\1\es\000024\eff\air\road-B\rdge\SN060-0311\Plans\060-0311\PierNo2.dgn

DESIGNED	ADL
CHECKED	WLW
DRAWN	RJP
CHECKED	WLW

PIER #2 DETAILS
FAP RTE. 310 (IL RTE. 255) SB & RAMP D OVER
UNION PACIFIC & KANSAS CITY SOUTHERN R.R.
SECTION 60-15VB-1 & 2
MADISON COUNTY
STATION 39+160.297
STRUCTURE NUMBER 060-0311