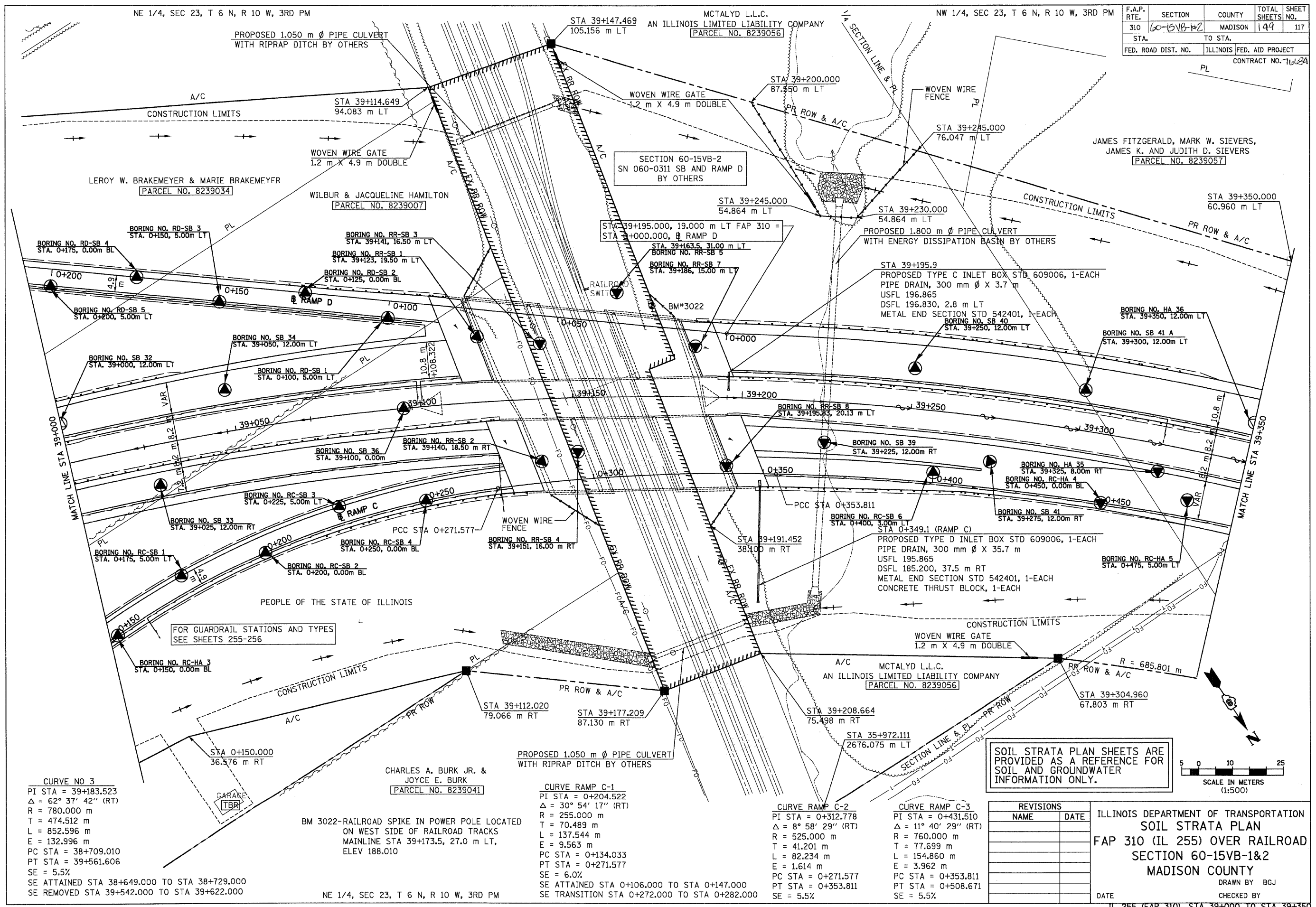


12/15/2008

p:\02files\000024\road\road-br\dge\ROADPLANS\ss-plan\015a12.dgn



F.A.P. RTE.	SECTION	COUNTY	TOTAL SHEETS	SHEET NO.
310	60-15VB-1&2	MADISON	149	117
STA.	TO STA.			
FED. ROAD DIST. NO.		ILLINOIS FED. AID PROJECT	CONTRACT NO. 716294	

CURVE NO 3
 PI STA = 39+183.523
 $\Delta = 62^\circ 37' 42''$ (RT)
 R = 780.000 m
 T = 474.512 m
 L = 852.596 m
 E = 132.996 m
 PC STA = 38+709.010
 PT STA = 39+561.606
 SE = 5.5%
 SE ATTAINED STA 38+649.000 TO STA 38+729.000
 SE REMOVED STA 39+542.000 TO STA 39+622.000

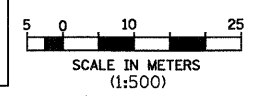
BM 3022-RAILROAD SPIKE IN POWER POLE LOCATED ON WEST SIDE OF RAILROAD TRACKS MAINLINE STA 39+173.5, 27.0 m LT, ELEV 188.010
 NE 1/4, SEC 23, T 6 N, R 10 W, 3RD PM

CURVE RAMP C-1
 PI STA = 0+204.522
 $\Delta = 30^\circ 54' 17''$ (RT)
 R = 255.000 m
 T = 70.489 m
 L = 137.544 m
 E = 9.563 m
 PC STA = 0+134.033
 PT STA = 0+271.577
 SE = 6.0%
 SE ATTAINED STA 0+106.000 TO STA 0+147.000
 SE TRANSITION STA 0+272.000 TO STA 0+282.000

CURVE RAMP C-2
 PI STA = 0+312.778
 $\Delta = 8^\circ 58' 29''$ (RT)
 R = 525.000 m
 T = 41.201 m
 L = 82.234 m
 E = 1.614 m
 PC STA = 0+271.577
 PT STA = 0+353.811
 SE = 5.5%

CURVE RAMP C-3
 PI STA = 0+431.510
 $\Delta = 11^\circ 40' 29''$ (RT)
 R = 760.000 m
 T = 77.699 m
 L = 154.860 m
 E = 3.962 m
 PC STA = 0+353.811
 PT STA = 0+508.671
 SE = 5.5%

SOIL STRATA PLAN SHEETS ARE PROVIDED AS A REFERENCE FOR SOIL AND GROUNDWATER INFORMATION ONLY.



REVISIONS	
NAME	DATE

ILLINOIS DEPARTMENT OF TRANSPORTATION
 SOIL STRATA PLAN
 FAP 310 (IL 255) OVER RAILROAD
 SECTION 60-15VB-1&2
 MADISON COUNTY
 DRAWN BY BGY
 CHECKED BY
 DATE
 IL 255 (FAP 310), STA 39+000 TO STA 39+350