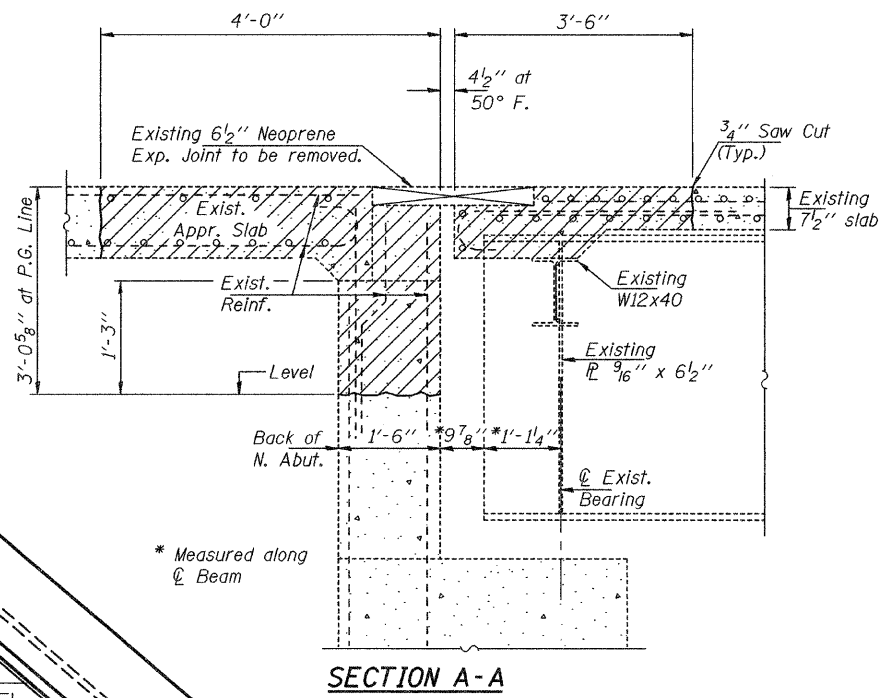
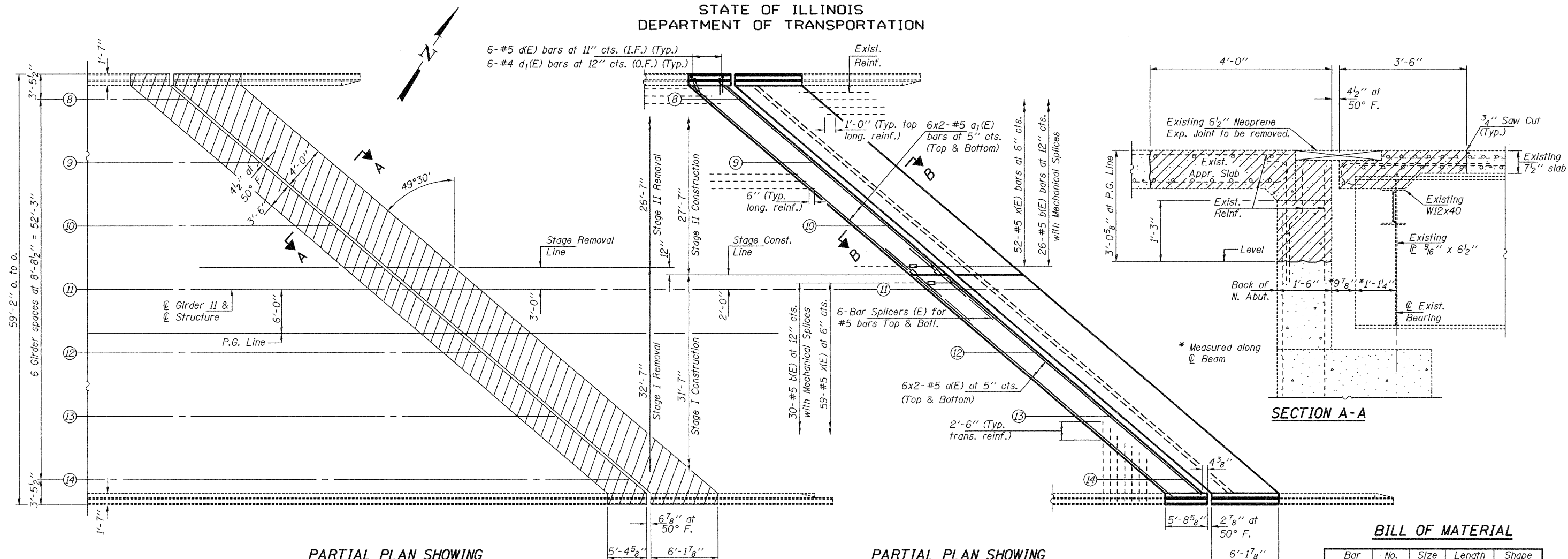
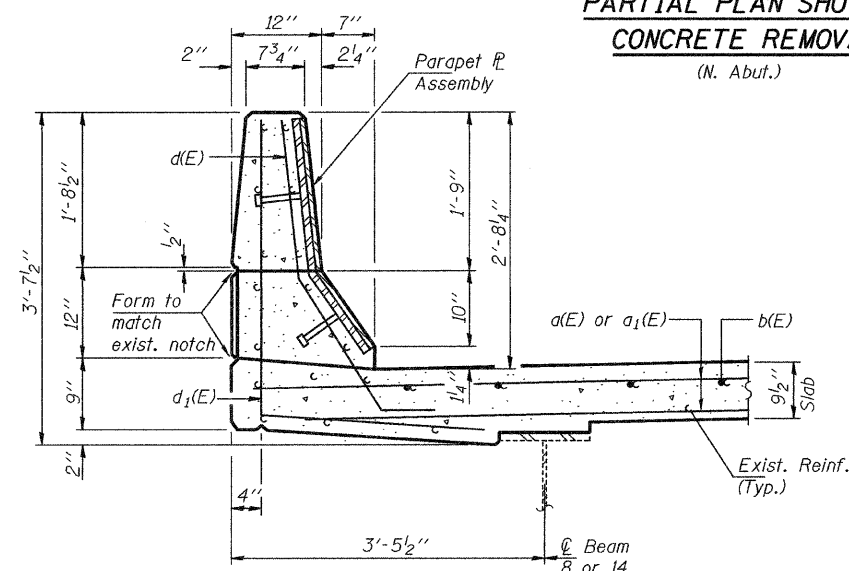


STATE OF ILLINOIS
DEPARTMENT OF TRANSPORTATION

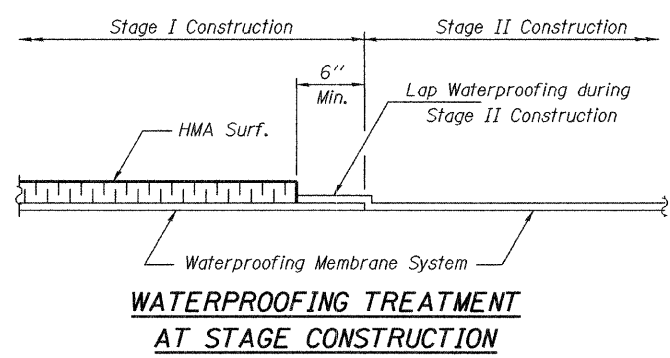


**PARTIAL PLAN SHOWING
CONCRETE REMOVAL**
(N. Abut.)

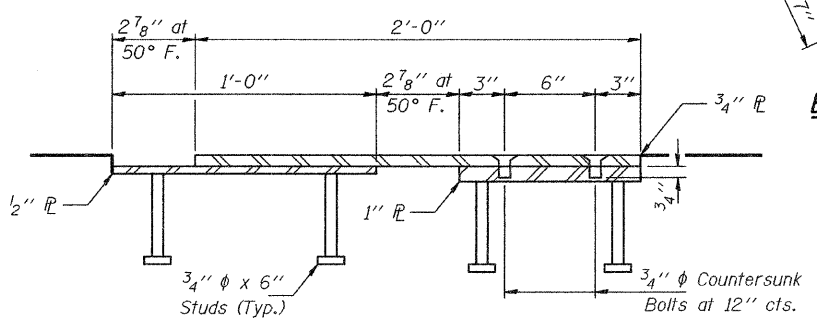


SECTION THRU CURB

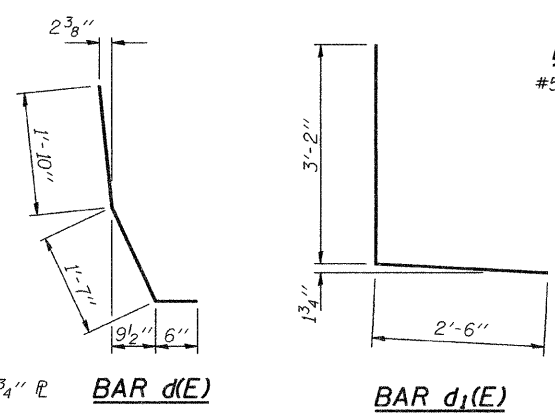
**PARTIAL PLAN SHOWING
CONCRETE REPLACEMENT**
(N. Abut.)



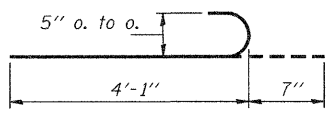
**WATERPROOFING TREATMENT
AT STAGE CONSTRUCTION**



PARAPET PLATE ASSEMBLY DETAIL



MIN. LAP
#5 Bars = 1'-8"



BAR x(E)

BILL OF MATERIAL

Bar No.	Size	Length	Shape
a(E)	#5	24'-8"	—
a1(E)	#5	21'-7"	—
b(E)	#5	4'-1"	—
d(E)	#5	3'-11"	┘
d1(E)	#4	5'-8"	┘
x(E)	#5	4'-8"	┘
Bar Splicer	Each	12	
Mechanical Splice	Each	58	
Concrete Removal	Cu. Yd.	12.6	
Concrete Superstructure	Cu. Yd.	14.3	
Reinforcement Bars, Epoxy Coated	Pound	2030	

Bars indicated thus 6 x 2-#5 etc. indicates 6 lines of bars with 2 lengths per line.
For Section B-B, see sheet 3 of 10.
For Concrete Removal details at the abutment, see sheet 6 of 10.
For Concrete Replacement and Reinforcement details at the abutment, see sheet 8 of 10.
Hatched areas indicate Concrete Removal.

**CONCRETE REMOVAL &
REPLACEMENT DETAILS**
SN 082-0245 (N.B.)

DESIGNED	AJB
CHECKED	VHV
DRAWN	Kyle M. Steffen
CHECKED	AJB VHV

MAY 28, 2009
EXAMINED *A. Carl Krueger*
ENGINEER OF STRUCTURAL SERVICES
PASSED *Ralph E. Anderson*
ENGINEER OF BRIDGES AND STRUCTURES

SHEET NO. 2 10 SHEETS	F.A.I. RTE.	SECTION	COUNTY	TOTAL SHEETS	SHEET NO.
	255	82-1B-3-I	ST. CLAIR	21	13
FED. ROAD DIST. NO.			ILLINOIS	FED. AID PROJECT	
			CONTRACT NO. 76C67		