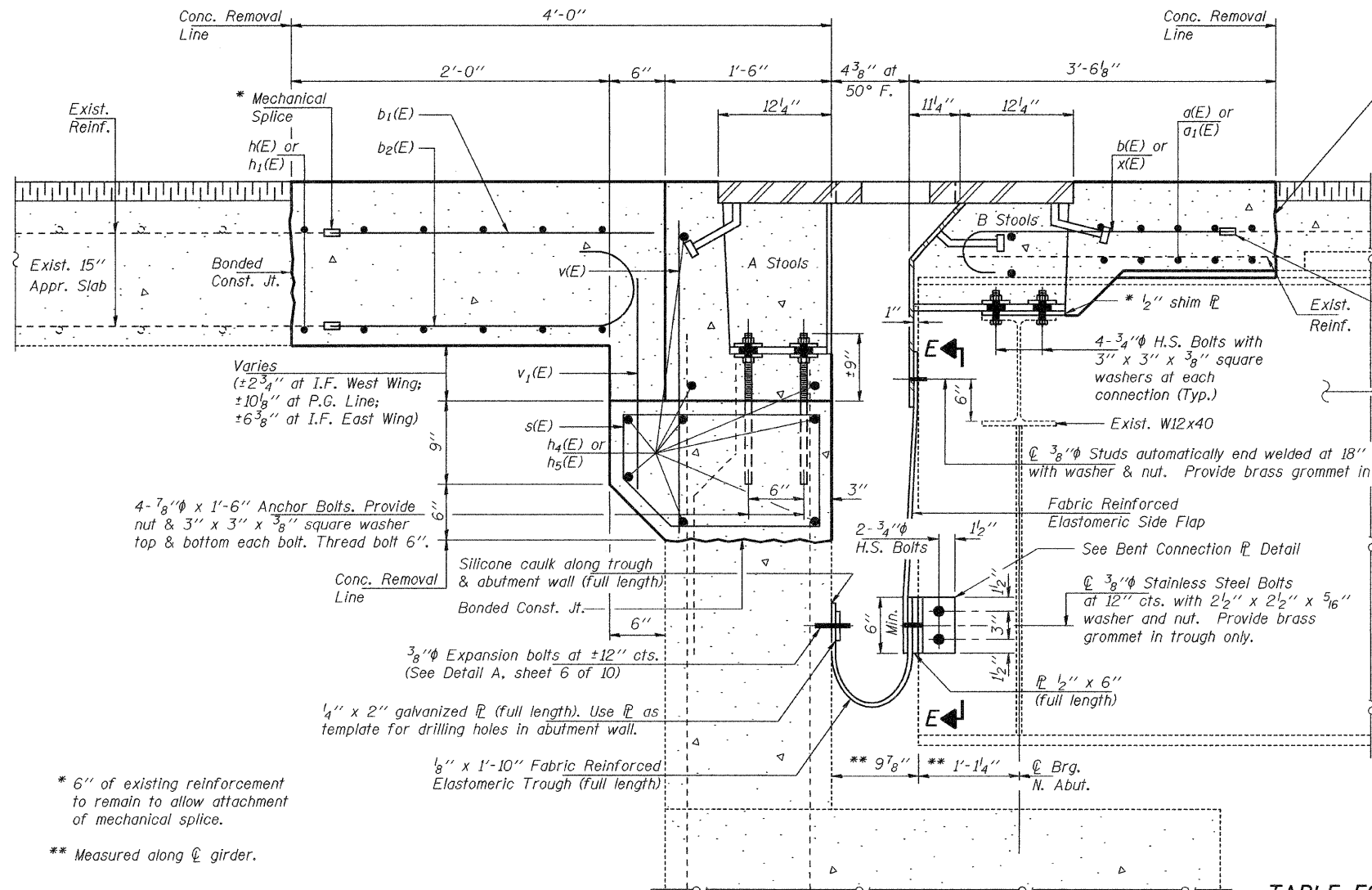
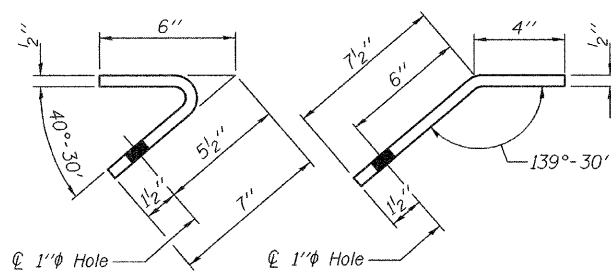


STATE OF ILLINOIS
DEPARTMENT OF TRANSPORTATION



* 6" of existing reinforcement to remain to allow attachment of mechanical splice.

** Measured along centerline of girder.



BENT CONNECTION PLATE DETAIL

DESIGNED	AJB
CHECKED	VHV
DRAWN	Kyle M. Steffen
CHECKED	AJB VHV

MAY 28, 2009
EXAMINED *Carl Krueger*
ENGINEER OF STRUCTURAL SERVICES
PASSED *Ralph E. Anderson*
ENGINEER OF BRIDGES AND STRUCTURES

TABLE FOR DIMENSIONS A & B

Stool No.	Dim. A	Stool No.	Dim. A	Stool No.	Dim. B	Stool No.	Dim. B
A1	13"	A23	15"	B1	7 3/8"	B23	17 7/16"
A2	13"	A24	15"	B2	14 3/8"	B24	17 9/16"
A3	13"	A25	15"	B3	14 9/16"	B25	17 5/8"
A4	13"	A26	15"	B4	14 3/4"	B26	17 1/16"
A5	13"	A27	15"	B5	14 7/8"	B27	17 1/16"
A6	13"	A28	15"	B6	15 1/16"	B28	17 5/16"
A7	13"	A29	15"	B7	15 1/4"	B29	7 7/16"
A8	13"	A30	15"	B8	7 7/16"	B30	16 9/16"
A9	13"	A31	15"	B9	15 9/16"	B31	16 3/16"
A10	13"	A32	13"	B10	15 3/4"	B32	15 13/16"
A11	13"	A33	13"	B11	15 7/8"	B33	15 7/16"
A12	13"	A34	13"	B12	16 1/16"	B34	15 1/16"
A13	13"	A35	13"	B13	16 1/4"	B35	15 1/16"
A14	13"	A36	13"	B14	16 3/8"	B36	7 7/16"
A15	15"	A37	13"	B15	7 7/16"	B37	13 7/8"
A16	15"	A38	13"	B16	16 1/16"	B38	13 7/16"
A17	15"	A39	13"	B17	16 13/16"	B39	12 15/16"
A18	15"	A40	10"	B18	16 7/8"	B40	12 1/2"
A19	15"	A41	10"	B19	17"	B41	12 1/16"
A20	15"	A42	10"	B20	17 1/8"	B42	11 5/8"
A21	15"	A43	10"	B21	17 1/4"	B43	7 3/8"
A22	15"	A44	10"	B22	7 3/8"		

Notes:
For Stool locations, see sheet 4 of 10.
For View E-E, see sheet 6 of 10.
Existing shear studs that interfere with the finger plate stools shall be removed using the air-arc method and grind smooth all weld material remaining on the top flange. Cost included with Finger Plate Expansion Joint, 3".

Dimensions "A" is measured at front face of backwall.
Dimensions "B" is measured at centerline of bearing.

JOINT DETAILS AT
NORTH ABUTMENT
SN 082-0245 (N.B.)

SHEET NO. 3	F.A.I. RTE.	SECTION	COUNTY	TOTAL SHEETS	SHEET NO.
	255	82-1B-3-I	ST. CLAIR	21	14
10 SHEETS	FED. ROAD DIST. NO. ILLINOIS FED. AID PROJECT		CONTRACT NO. 76C67		