

**GENERAL NOTES**

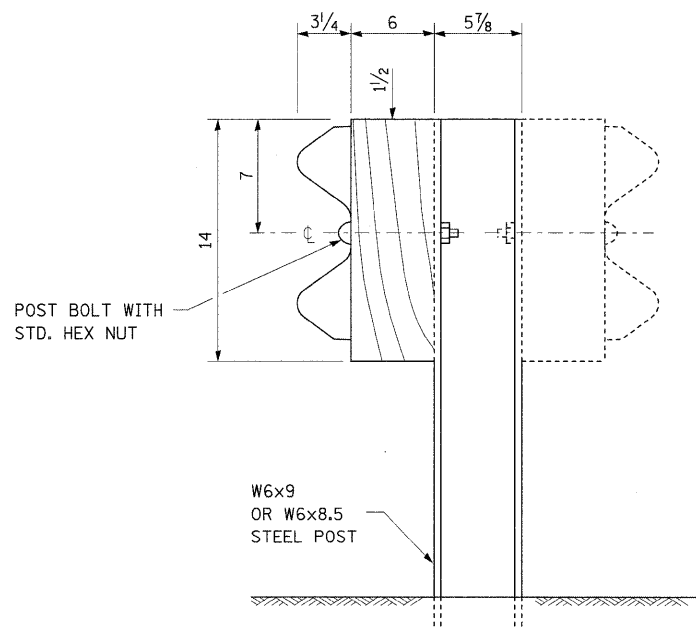
ALL SLOPE RATIOS ARE EXPRESSED AS UNITS OF VERTICAL DISPLACEMENT TO UNITS OF HORIZONTAL DISPLACEMENT (V:H).

ALL DIMENSIONS ARE IN INCHES UNLESS OTHERWISE SHOWN.

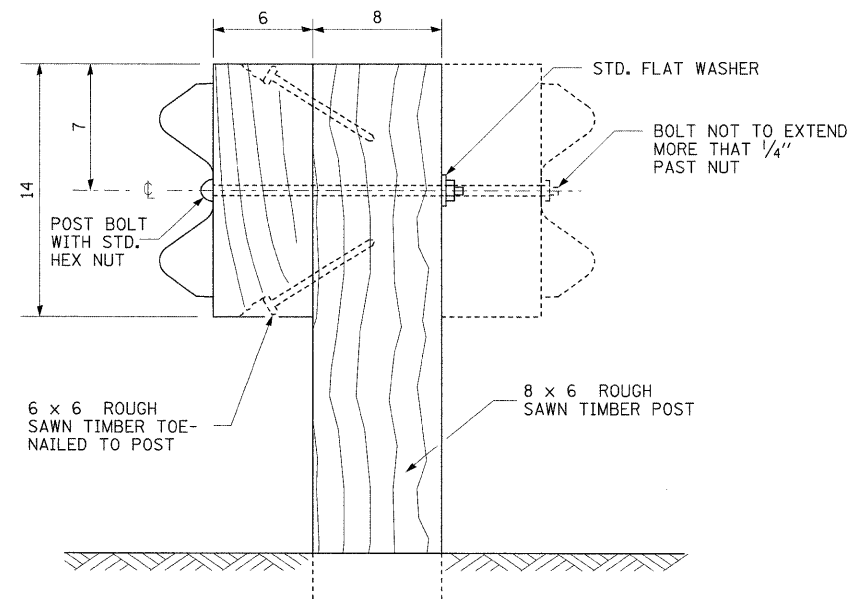
THE EXISTING STEEL POSTS MAY BE DRILLED TO MATCH THE BOLT PATTERN SHOWN HEREIN FOR THE WOOD BLOCK-OUT, OR A NEW STEEL POST SHALL BE PROVIDED.

THIS DETAIL IS APPLICABLE TO THE GUARDRAIL SYSTEM USED PRIOR TO JANUARY 1, 2007. FOR DETAILS ON THE MIDWEST GUARDRAIL SYSTEM, SEE STANDARD 630001.

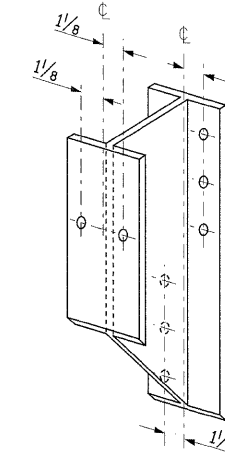
**TYPE A**



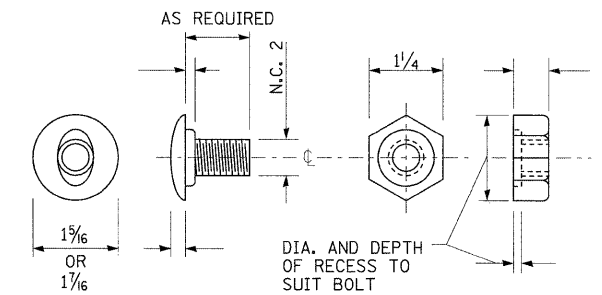
**STEEL POST CONSTRUCTION**



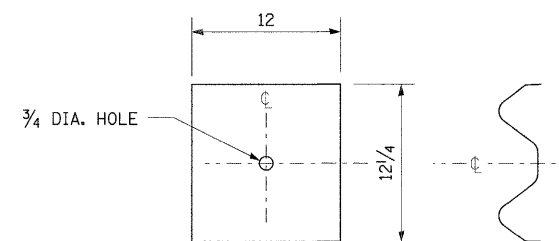
**WOOD POST CONSTRUCTION**



**STEEL BLOCK-OUT DETAIL**



**POST OR SPLICE BOLT & NUT**



NOTE:

PLATE A SHALL BE PLACED BETWEEN RAIL ELEMENT AND BLOCK-OUT AT NON-SPLICE MOUNTING POINTS ONLY WHEN STEEL BLOCK-OUTS ARE USED.

**PLATE A**

FILE NAME =	USER NAME = cwenbj	DESIGNED -	REVISED -	<b>STATE OF ILLINOIS DEPARTMENT OF TRANSPORTATION</b>	<b>STEEL PLATE BEAM GUARDRAIL, TYPE A DETAIL</b>	F.A.P. RTE.	SECTION	COUNTY	TOTAL SHEETS	SHEET NO.	
es:\pwork\pwork\pwork\owenbj\dms5159\p1n02205b.dgn		DRAWN -	REVISED -			817	421R-1	ST. CLAIR	29	16	
PLOT SCALE = 50.0000" / IN.		CHECKED -	REVISED -			CONTRACT NO. 76C74					
PLOT DATE = 12/18/2008		DATE -	REVISED -			SCALE:	SHEET NO. 1 OF 3 SHEETS	STA.	TO STA.	FED. ROAD DIST. NO.	ILLINOIS FED. AID PROJECT