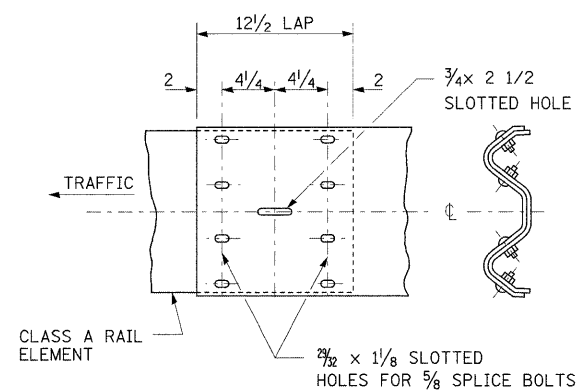
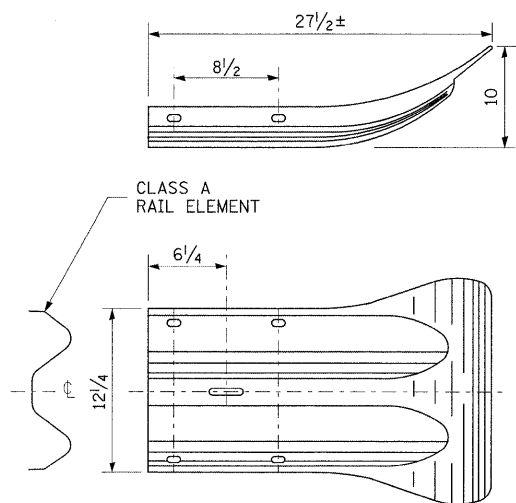


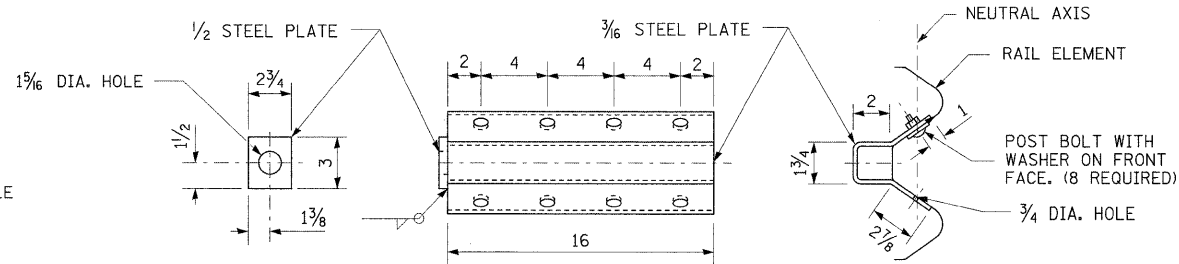
**SPLICE PLATE**



**RAIL ELEMENT SPLICE**

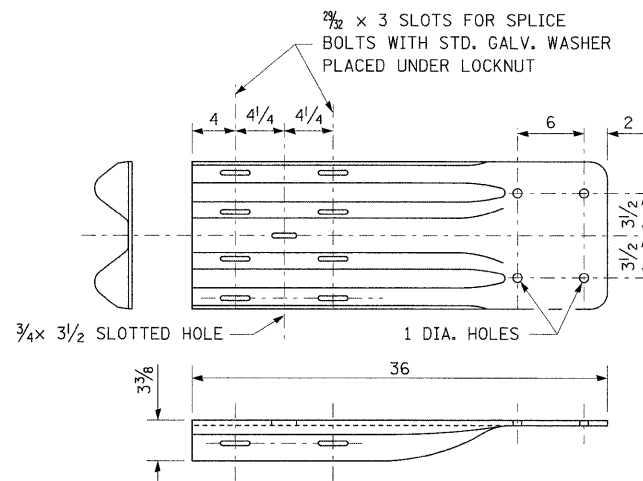


**END SECTION**



NOTE  
ANCHOR PLATE T SHALL BE USED TO ATTACH CABLE ASSEMBLY TO GUARDRAIL WHEN REQUIRED ON TRAFFIC BARRIER TERMINALS.

**ANCHOR PLATE T DETAILS**

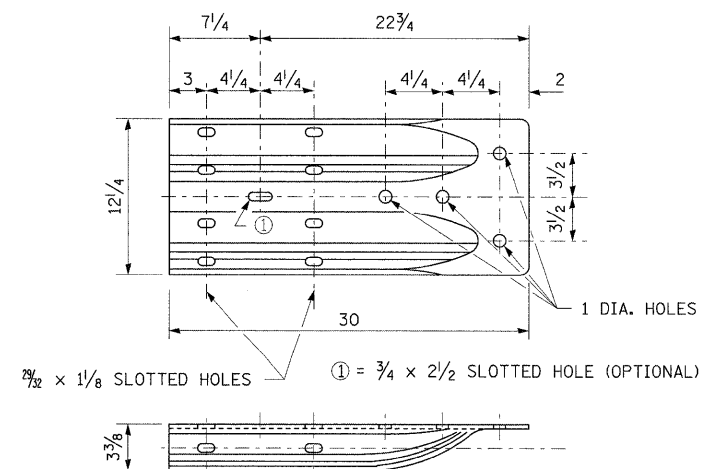


NOTE  
WHEN END SHOE IS ATTACHED TO A BRIDGE PARAPET WHICH HAS AN EXPANSION JOINT, THE BOLTS SHALL BE PROVIDED WITH A LOCKNUT OR DOUBLE NUT AND SHALL BE TIGHTENED ONLY TO A POINT THAT WILL ALLOW GUARDRAIL MOVEMENT.

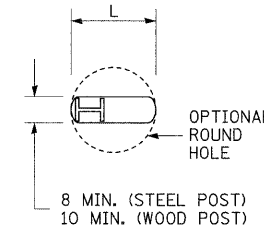
THE STANDARD END SHOE SHALL BE ATTACHED TO THE CONCRETE WITH PRE-DRILLED OR SELF-DRILLING ANCHOR BOLTS. THE ANCHOR CONE SHALL BE SET FLUSH WITH THE SURFACE OF THE CONCRETE.

EXTERNALLY THREADED STUDS PROTRUDING FROM THE SURFACE OF THE CONCRETE WILL NOT BE PERMITTED.

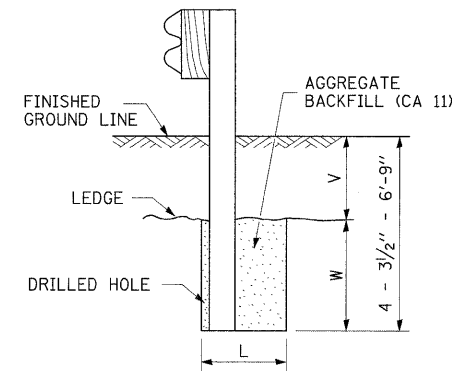
**END SHOE**



**ALTERNATE END SHOE**



**PLAN**

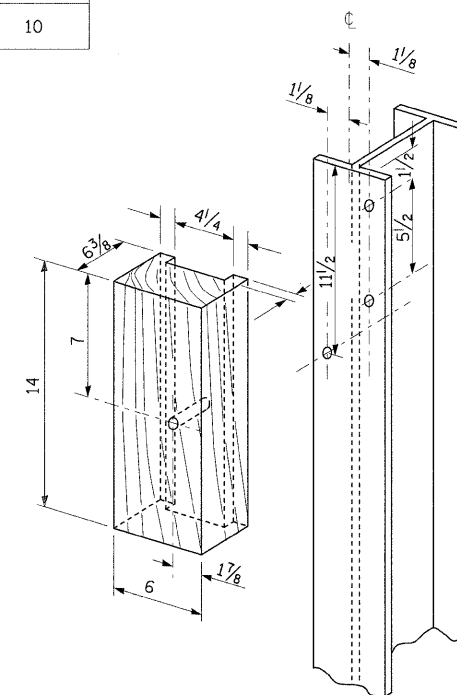


NOTE:  
LEDGE LINE IS TOP OF ROCK LEDGE OR HARD SLAG FILL.

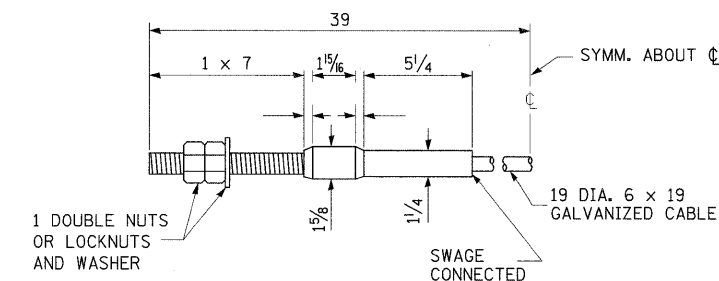
**ELEVATION**

V	W	L	
		STEEL POST	WOOD POST
0 - 18	24	21	23
>18 - 41.5	12	8	10
>41.5 - 53.5	12 - 0	8	10

**FOOTING FOR POST WHEN IMPERVIOUS MATERIAL IS ENCOUNTERED**



**WOOD BLOCK-OUT AND STEEL POST DETAILS**



**CABLE ASSEMBLY**

40,000 LBS. MIN. BREAKING STRENGTH  
TIGHTEN TO TAUT TENSION.

FILE NAME =  
C:\pwork\pwork\DOT\OWENBJ\dms51591\p1n2205b.dgn  
USER NAME = owenbj  
DESIGNED -  
DRAWN -  
PLOT SCALE = 50.0000' / IN.  
PLOT DATE = 12/19/2008

DESIGNED -  
DRAWN -  
CHECKED -  
DATE -  
REVISED -  
REVISED -  
REVISED -  
REVISED -

**STATE OF ILLINOIS  
DEPARTMENT OF TRANSPORTATION**

**STEEL PLATE BEAM GUARDRAIL, TYPE A DETAIL**  
SCALE: SHEET NO. 2 OF 3 SHEETS STA. TO STA.

F.A.P. RTE. 817 SECTION 421R-1 COUNTY ST. CLAIR TOTAL SHEETS 29 SHEET NO. 17 CONTRACT NO. 76C74  
FED. ROAD DIST. NO. ILLINOIS FED. AID PROJECT