

LEGEND

① 14" SS REPAIR CLAMP, 25" LENGTH

NOTES

REINFORCEMENT BARS SHALL BE ACCORDING TO SECTION 508 AND SHALL CONFORM TO AASHTO M-31, M-42, OR M-53 GRADE 60.

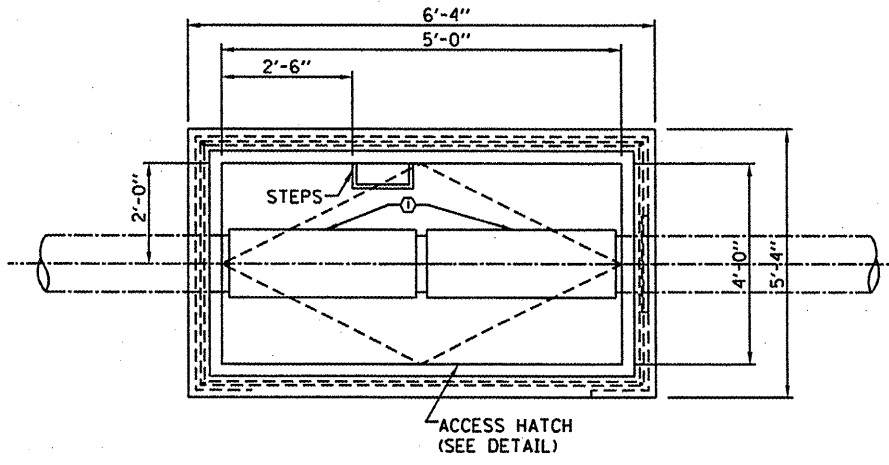
CONCRETE SHALL BE ACCORDING TO SECTION 503 AND THE CLASS SHALL BE SI.

COMPACTED SAND BACKFILL SHALL BE ACCORDING TO SECTION 207.

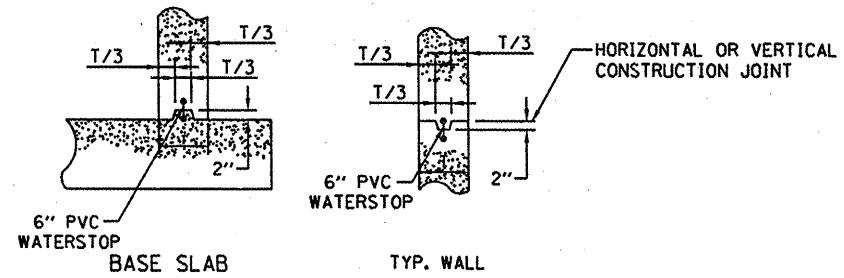
REPAIR CLAMP AND PIPE SUPPORTS SHALL BE INCLUDED IN THE PAY ITEM CLEANOUT VAULT.

NOTES

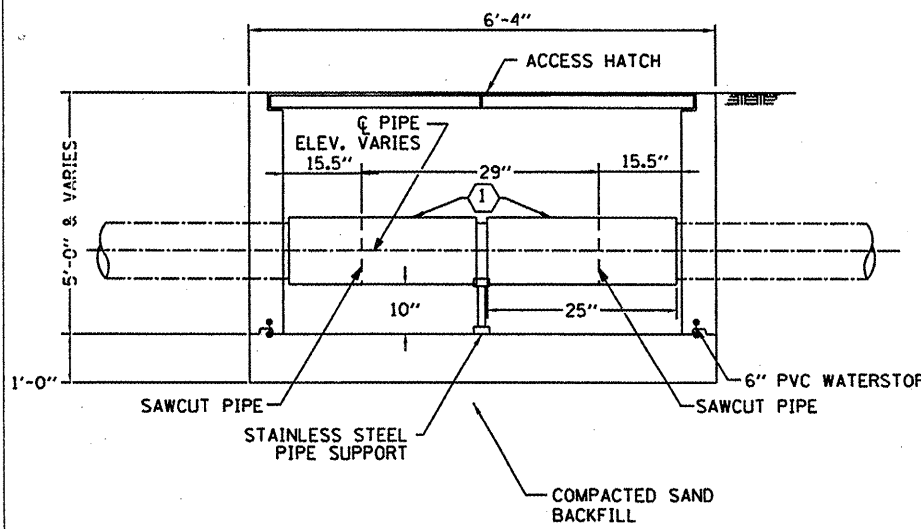
1 BOLTS, NUTS & WASHERS SHALL BE 304L SS



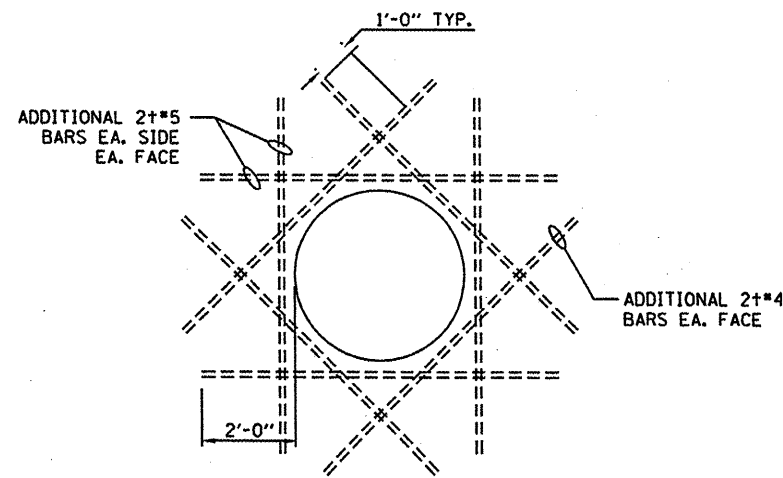
PLAN



KEYWAY DETAILS



ELEVATION



TYPICAL ADDITIONAL REINFORCEMENT AROUND PIPE PENETRATIONS

FILE NAME: *	USER NAME * #USER#	DESIGNED - EJC	REVISED -
#FILE#		DRAWN - JLA	REVISED -
	PLOT SCALE * #SCALE#	CHECKED - EEA	REVISED -
	PLOT DATE * #DATE#	DATE - 03/02/09	REVISED -

STATE OF ILLINOIS
DEPARTMENT OF TRANSPORTATION

DETAILS
CLEANOUT INSTALLATION IN VENICE, ILLINOIS

F.A.P. RTE.	SECTION	COUNTY	TOTAL SHEETS	SHEET NO.
788	27T-8	MADISON	11	9
CONTRACT NO. 76D02				
ILLINOIS FED. AID PROJECT				

SCALE: NTS SHEET NO. 9 OF 11 SHEETS STA. TO STA.