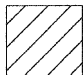
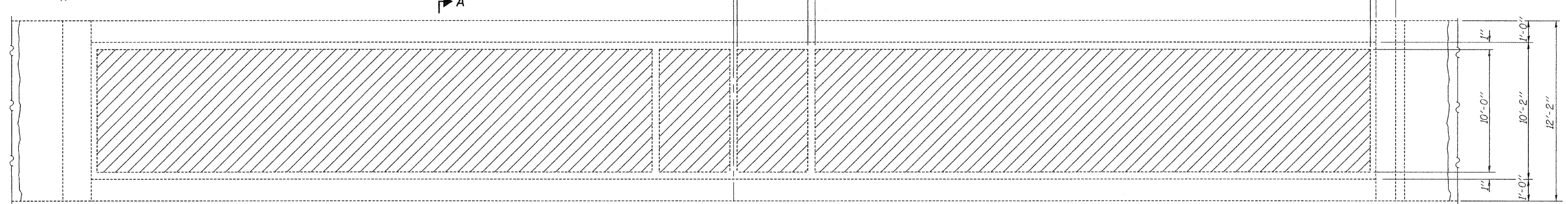


STATE OF ILLINOIS  
DEPARTMENT OF TRANSPORTATION

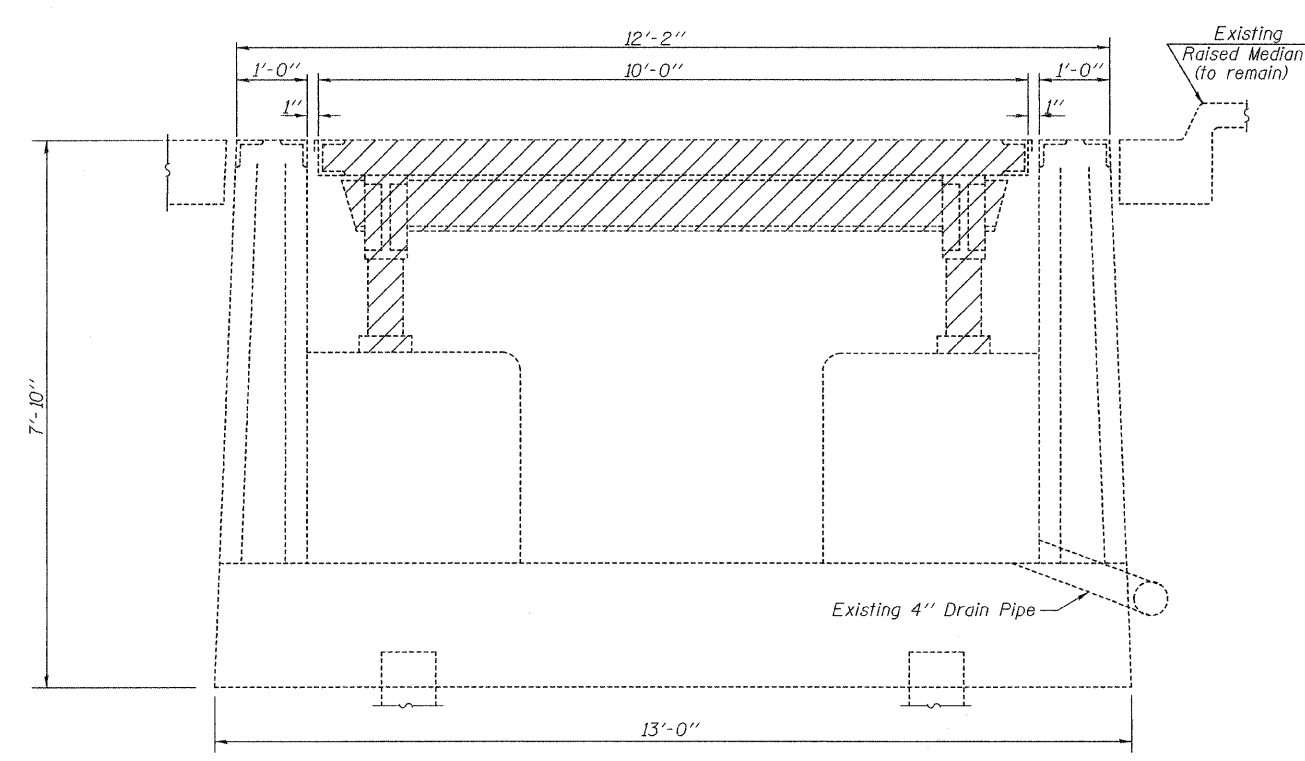


 Indicates limits to be removed as  
Removal of Existing Superstructure

Symm. about  $\bar{C}$  (except  
for concrete pit entrance)  
6'-0" end to end of slab  
50'-0" end to end of slab  
1'-0"



PLAN



SECTION A-A

BILL OF MATERIAL

Item	Unit	Total
Removal of Existing Superstructures	Each	1.0

SUPERSTRUCTURE REMOVAL DETAILS  
STA. 843+49.94

DESIGNED Patrick M. Petrone  
CHECKED Jay D. Edwards  
DRAWN BECKY M. LEACH  
CHECKED PMP/JDE

APRIL 21, 2009  
EXAMINED *Thomas J. Demagalicki*  
PASSED *Ralph E. Anderson*  
ENGINEER OF BRIDGES AND STRUCTURES

SHEET NO. 3 4 SHEETS	F.A.I. RTE.	SECTION	COUNTY	TOTAL SHEETS	SHEET NO.
	64	82-71-4	ST. CLAIR	7	6
FED. ROAD DIST. NO.			ILLINOIS FED. AID PROJECT		
CONTRACT NO. 76D03					