

F.A.U. RTE.	SECTION	COUNTY	TOTAL SHEETS	SHEET NO.
--	99-00109-01-BT	DU PAGE	74	1
FED. ROAD DIST. NO. 1		ILLINOIS	FED. AID PROJECT	

CONTRACT No. 83728

INDEX OF SHEETS

DESCRIPTION	SHEET NO.
TITLE SHEET	1
GENERAL NOTES & IDOT STANDARDS	2
SUMMARY OF QUANTITIES	3
TYPICAL SECTIONS AND CONSTRUCTION DETAIL	4-5
ALIGNMENT, TIES AND BENCHMARKS	6-7
EARTHWORK SCHEDULE	8
OVERALL SITE PLAN	9
PROPOSED PLAN (STATION 10+00 TO 25+00)	10
BIKE PATH PLAN AND PROFILE	11-19
SESC DETAILS AND STANDARD NOTES	20
BRIDGE 1 - PLAN AND PROFILE	21
BRIDGE 1 - GENERAL NOTES	22
BRIDGE 1 - ABUTMENT AND BRIDGE SECTIONS	23
BRIDGE 1 - WINGWALLS AND DETAILS	24
BRIDGE 2 - PLAN AND PROFILE	25
BRIDGE 2 - GENERAL NOTES	26
BRIDGE 2 - ABUTMENTS AND BRIDGE SECTIONS	27
BRIDGE 2 - WINGWALL AND DETAILS	28
BRIDGE 2 - PIER	29
BRIDGE 2 - BICYCLE RAILING DETAIL	30
BRIDGE 2 - NORTH RETAINING WALL	31
BRIDGE 1 AND BRIDGE 2 - BORING LOGS	32
TRAFFIC CONTROL AND PROTECTION FOR SIDE ROADS, INTERSECTIONS, AND DRIVEWAYS	33
DISTRICT ONE TYPICAL PAVEMENT MARKINGS	34
PAVEMENT MARKING LETTERS AND SYMBOLS FOR TRAFFIC STAGING	35
CROSS SECTIONS	36-73
CROSS SECTION COMPENSATORY STORAGE	74

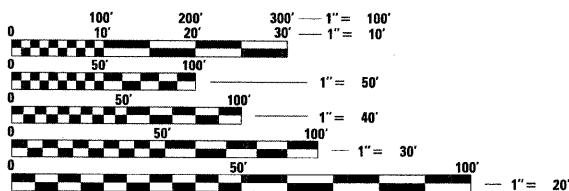
LIST OF STATE STANDARDS LOCATED ON SHEET NO. 2

PROJECT LOCATED IN THE CITY OF NAPERVILLE

THE CONTRACTOR SHALL BE SOLELY RESPONSIBLE FOR JOB SITE SAFETY AS WELL AS SUPERVISION/DIRECTION AND MEANS/METHODS OF CONSTRUCTION.

CALL JULIE 1-800-892-0123 WITH THE FOLLOWING:

COUNTY DUPAGE & WILL
 CITY-TOWNSHIP NAPERVILLE-LISLE & DUPAGE
 SEC. & 1/4 SEC. NO. # N.E. 1/4 SEC 7, T37N R10E
 48 HOURS BEFORE YOU DIG.
 EXCLUDING SAT., SUN., & HOLIDAYS



FULL SIZE PLANS HAVE BEEN PREPARED USING STANDARD ENGINEERING SCALES. REDUCED SIZED PLANS WILL NOT CONFORM TO STANDARD SCALES. IN MAKING MEASUREMENTS ON REDUCED PLANS, THE ABOVE SCALES MAY BE USED.

CONTRACT NO. 83728

**STATE OF ILLINOIS
 DEPARTMENT OF TRANSPORTATION
 DIVISION OF HIGHWAYS**

**PLANS FOR PROPOSED
 FEDERAL AID HIGHWAY**

**NAPERVILLE
 DuPAGE River Trail - Segment #4
 SECTION No. 99-00109-01-BT
 Washington St. and 87th St.
 to Washington St. and Royce Rd.
 BIKE TRAIL CONSTRUCTION
 PROJECT No. ARA-CMM-8003 (888)**

**DuPAGE AND WILL COUNTY
 C-91-645-09**



TRAFFIC DATA
 ADT (YEAR) = N/A
 SPEED LIMIT = N/A

BRIDGE INFORMATION
 BRIDGE 1: CONSTRUCT 1 SPAN
 PREFABRICATED PEDESTRIAN
 TRUSS SUPERSTRUCTURE
 AND SOLID WEB PIERS

BRIDGE 2: CONSTRUCT 2 SPAN
 PREFABRICATED PEDESTRIAN
 TRUSS SUPERSTRUCTURE
 AND SOLID WEB PIERS

PROJECT ENDS
 STA 141+04.77



LOCATION OF SECTION INDICATED THIS: - [Symbol] -

**STATE OF ILLINOIS
 DEPARTMENT OF TRANSPORTATION
 DIVISION OF HIGHWAYS**

APPROVED March 24 2009
Robert Bozwick
 CITY OF NAPERVILLE DEPUTY CITY ENGINEER

PASSED APRIL 08 2009
Christopher B. Burke
 DISTRICT 1 ENGINEER OF LOCAL ROADS AND STREETS

RELEASING FOR BID
 BASED ON LIMITED REVIEW APRIL 08 2009
Diana M. O'Keefe
 DEPUTY DIRECTOR OF HIGHWAYS, REGION 1 ENGINEER

FIELD ENGINEER: MARLIN D. SOLOMON
 201 W. CENTER COURT
 SCHALMURG, ILLINOIS 60196-1096
 (847) 705-4407

**LOCATION MAP
 N.T.S.**

GROSS LENGTH OF PROJECT = 13200 FEET (2.5 MI)
 NET LENGTH OF PROJECT = 13200 FEET (2.5 MI)



LEE M. FELL P.E.
 ENGINEER
 DATE: 3/25/09
 ILLINOIS REGISTRATION No. 062-053706
 EXPIRATION DATE: 11/2009

CHRISTOPHER B. BURKE ENGINEERING, LTD.
 9575 W. Higgins Road, Suite 600
 Rosemont, Illinois 60018
 (847) 823-0500

PROFESSIONAL DESIGN FIRM NO. 184-001175
 EXPIRATION DATE: 04/30/11

PRINTED BY THE AUTHORITY OF THE STATE OF ILLINOIS