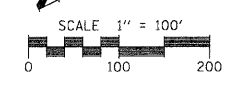


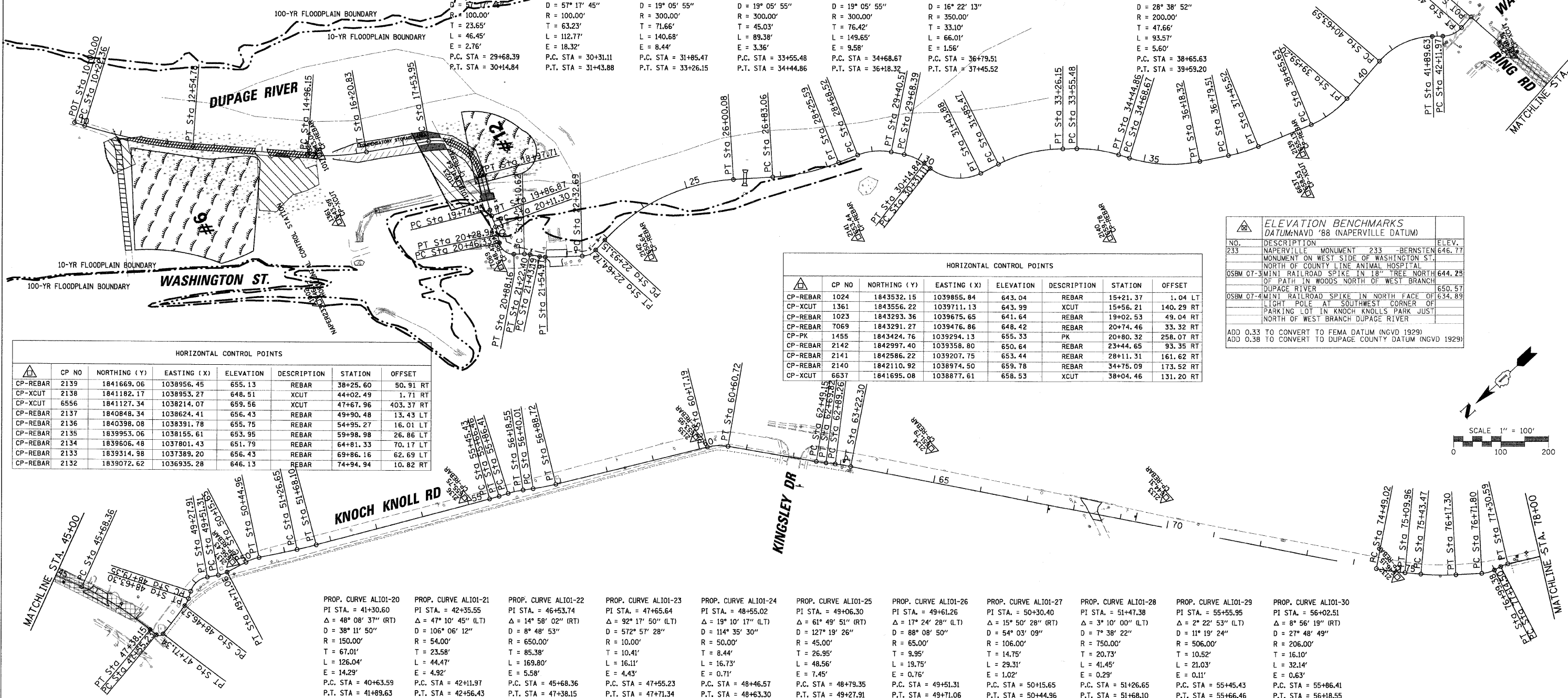
CONTRACT No. 83728



PROP. CURVE AL101-1 PI STA. = 11+39.09 Δ = 13° 12' 41" (LT) D = 5' 41' 03" R = 1,008.00' T = 116.73' L = 232.42' E = 6.74' P.C. STA = 10+22.36 P.T. STA = 12+54.78	PROP. CURVE AL101-2 PI STA. = 15+58.81 Δ = 14° 03' 42" (LT) D = 11' 16' 43" R = 508.00' T = 62.65' L = 124.67' E = 3.85' P.C. STA = 14+96.15 P.T. STA = 16+20.83	PROP. CURVE AL101-3 PI STA. = 18+43.16 Δ = 85° 47' 54" (RT) D = 59' 40' 59" R = 96.00' T = 89.21' L = 143.76' E = 35.05' P.C. STA = 17+53.95 P.T. STA = 18+97.71	PROP. CURVE AL101-4 PI STA. = 19+80.72 Δ = 5° 52' 57" (LT) D = 47' 44' 47" R = 120.00' T = 6.17' L = 12.32' E = 0.16' P.C. STA = 19+74.55 P.T. STA = 19+86.87	PROP. CURVE AL101-5 PI STA. = 20+20.13 Δ = 8° 25' 19" (LT) D = 47' 44' 47" R = 120.00' T = 8.84' L = 17.64' E = 0.32' P.C. STA = 20+11.30 P.T. STA = 20+28.94	PROP. CURVE AL101-6 PI STA. = 20+71.46 Δ = 79° 54' 13" (LT) D = 190' 59' 09" R = 30.00' T = 25.13' L = 41.84' E = 9.13' P.C. STA = 20+46.33 P.T. STA = 20+88.16	PROP. CURVE AL101-7 PI STA. = 21+16.54 Δ = 13° 30' 03" (RT) D = 114' 35' 30" R = 50.00' T = 5.92' L = 11.78' E = 0.35' P.C. STA = 21+10.62 P.T. STA = 21+22.40	PROP. CURVE AL101-8 PI STA. = 21+49.11 Δ = 13° 30' 03" (RT) D = 114' 35' 30" R = 50.00' T = 5.92' L = 11.78' E = 0.35' P.C. STA = 21+43.19 P.T. STA = 21+54.97	PROP. CURVE AL101-9 PI STA. = 22+49.62 Δ = 45° 52' 50" (LT) D = 143' 14' 22" R = 40.00' T = 16.93' L = 32.03' E = 3.44' P.C. STA = 22+32.69 P.T. STA = 22+64.72	PROP. CURVE AL101-10 PI STA. = 24+54.61 Δ = 43° 57' 54" (RT) D = 14' 19' 26" R = 400.00' T = 161.47' L = 306.93' E = 31.36' P.C. STA = 22+93.15 P.T. STA = 26+00.08	PROP. CURVE AL101-11 PI STA. = 27+54.93 Δ = 18° 08' 55" (LT) D = 12' 43' 57" R = 450.00' T = 71.87' L = 142.54' E = 5.70' P.C. STA = 26+83.06 P.T. STA = 28+25.59	PROP. CURVE AL101-12 PI STA. = 29+05.53 Δ = 32° 43' 57" (RT) D = 45' 28' 22" R = 126.00' T = 37.00' L = 71.98' E = 5.32' P.C. STA = 28+68.52 P.T. STA = 29+40.51
---	---	---	--	--	--	---	---	--	--	--	---

DATE	BY	PLAN
		DATE
		BY
		DATE
		BY

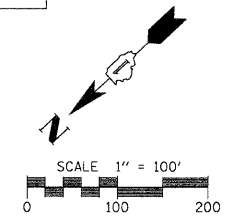
DATE	BY	PROFILE
		DATE
		BY
		DATE
		BY



CP NO	NORTHING (Y)	EASTING (X)	ELEVATION	DESCRIPTION	STATION	OFFSET
CP-REBAR 1024	1843532.15	1039855.84	643.04	REBAR	15+21.37	1.04 LT
CP-XCUT 1361	1843556.22	1039711.13	643.99	XCUT	15+56.21	140.29 RT
CP-REBAR 1023	1843293.36	1039675.65	641.64	REBAR	19+02.53	49.04 RT
CP-REBAR 7069	1843291.27	1039476.86	648.42	REBAR	20+74.46	33.32 RT
CP-PK 1455	1843424.76	1039294.13	655.33	PK	20+80.32	258.07 RT
CP-REBAR 2142	1842997.40	1039358.80	650.64	REBAR	23+44.65	93.35 RT
CP-REBAR 2141	1842586.22	1039207.75	653.44	REBAR	28+11.31	161.62 RT
CP-REBAR 2140	1842110.92	1038974.50	659.78	REBAR	34+75.09	173.52 RT
CP-XCUT 6637	1841695.08	1038877.61	658.53	XCUT	38+04.46	131.20 RT

NO.	DESCRIPTION	ELEV.
233	NAPERVILLE MONUMENT - BERNSTEN MONUMENT ON WEST SIDE OF WASHINGTON ST. NORTH OF COUNTY LINE ANIMAL HOSPITAL	646.77
OSBM 07-3	MINI RAILROAD SPIKE IN 18" TREE NORTH OF PATH IN WOODS NORTH OF WEST BRANCH DUPAGE RIVER	644.23
OSBM 07-4	MINI RAILROAD SPIKE IN NORTH FACE OF LIGHT POLE AT SOUTHWEST CORNER OF PARKING LOT IN KNOCH KNOLLS PARK JUST NORTH OF WEST BRANCH DUPAGE RIVER	650.57
		634.89

ADD 0.33 TO CONVERT TO FEMA DATUM (NGVD 1929)
ADD 0.38 TO CONVERT TO DUPAGE COUNTY DATUM (NGVD 1929)



CP NO	NORTHING (Y)	EASTING (X)	ELEVATION	DESCRIPTION	STATION	OFFSET
CP-REBAR 2139	1841669.06	1038956.45	655.13	REBAR	38+25.60	50.91 RT
CP-XCUT 2138	1841182.17	1038953.27	648.51	XCUT	44+02.49	1.71 RT
CP-XCUT 6556	1841127.34	1038214.07	659.56	XCUT	47+67.96	403.37 RT
CP-REBAR 2137	1840848.34	1038624.41	656.43	REBAR	49+90.48	13.43 LT
CP-REBAR 2136	1840398.08	1038391.78	655.75	REBAR	54+95.27	16.01 LT
CP-REBAR 2135	1839953.06	1038155.61	653.95	REBAR	59+98.98	26.86 LT
CP-REBAR 2134	1839606.48	1037801.43	651.79	REBAR	64+81.33	70.17 LT
CP-REBAR 2133	1839314.98	1037389.20	656.43	REBAR	69+86.16	62.69 LT
CP-REBAR 2132	1839072.62	1036935.28	646.13	REBAR	74+94.94	10.82 RT

PROP. CURVE AL101-20 PI STA. = 41+30.60 Δ = 48° 08' 37" (RT) D = 38' 11' 50" R = 150.00' T = 67.01' L = 126.04' E = 14.29' P.C. STA = 40+63.59 P.T. STA = 41+89.63	PROP. CURVE AL101-21 PI STA. = 42+35.55 Δ = 47° 10' 45" (LT) D = 106° 06' 12" R = 54.00' T = 23.58' L = 44.47' E = 4.92' P.C. STA = 42+11.97 P.T. STA = 42+56.43	PROP. CURVE AL101-22 PI STA. = 46+53.74 Δ = 14° 58' 02" (RT) D = 8° 48' 53" R = 650.00' T = 85.38' L = 169.80' E = 5.58' P.C. STA = 45+68.36 P.T. STA = 47+38.15	PROP. CURVE AL101-23 PI STA. = 47+65.64 Δ = 92° 17' 50" (LT) D = 572' 57' 28" R = 10.00' T = 10.41' L = 16.11' E = 4.43' P.C. STA = 47+55.23 P.T. STA = 47+71.34	PROP. CURVE AL101-24 PI STA. = 48+55.02 Δ = 19° 10' 17" (LT) D = 114' 35' 30" R = 50.00' T = 8.44' L = 16.73' E = 0.71' P.C. STA = 48+46.57 P.T. STA = 48+63.30	PROP. CURVE AL101-25 PI STA. = 49+06.30 Δ = 61° 49' 51" (RT) D = 127' 19' 26" R = 45.00' T = 26.95' L = 48.56' E = 7.45' P.C. STA = 48+79.35 P.T. STA = 49+27.91	PROP. CURVE AL101-26 PI STA. = 49+61.26 Δ = 17° 24' 28" (LT) D = 88° 08' 50" R = 106.00' T = 9.95' L = 19.75' E = 0.76' P.C. STA = 49+51.31 P.T. STA = 49+71.06	PROP. CURVE AL101-27 PI STA. = 50+30.40 Δ = 15° 50' 28" (RT) D = 54° 03' 09" R = 106.00' T = 14.75' L = 29.31' E = 1.02' P.C. STA = 50+15.65 P.T. STA = 50+44.96	PROP. CURVE AL101-28 PI STA. = 51+47.38 Δ = 2° 22' 53" (LT) D = 7° 38' 22" R = 750.00' T = 20.73' L = 41.45' E = 0.29' P.C. STA = 51+26.65 P.T. STA = 51+68.10	PROP. CURVE AL101-29 PI STA. = 55+55.95 Δ = 2° 22' 53" (LT) D = 11° 19' 24" R = 506.00' T = 10.52' L = 21.03' E = 0.11' P.C. STA = 55+45.43 P.T. STA = 55+66.46	PROP. CURVE AL101-30 PI STA. = 56+02.51 Δ = 8° 56' 19" (RT) D = 27° 48' 49" R = 206.00' T = 16.10' L = 32.14' E = 0.63' P.C. STA = 55+86.41 P.T. STA = 56+18.55
---	---	---	---	--	---	--	---	---	--	--

PROP. CURVE AL101-31 PI STA. = 56+64.38 Δ = 5° 30' 56" (RT) D = 11° 19' 24" R = 506.00' T = 24.37' L = 48.71' E = 0.59' P.C. STA = 56+40.01 P.T. STA = 56+88.72	PROP. CURVE AL101-32 PI STA. = 60+39.27 Δ = 23° 31' 50" (RT) D = 54° 03' 09" R = 106.00' T = 22.08' L = 43.53' E = 2.27' P.C. STA = 60+17.19 P.T. STA = 60+60.72	PROP. CURVE AL101-33 PI STA. = 62+59.48 Δ = 2° 20' 25" (LT) D = 11° 19' 24" R = 506.00' T = 10.34' L = 20.67' E = 0.11' P.C. STA = 62+49.15 P.T. STA = 62+69.82	PROP. CURVE AL101-34 PI STA. = 63+05.78 Δ = 3° 44' 29" (RT) D = 11° 19' 24" R = 506.00' T = 16.53' L = 33.04' E = 0.27' P.C. STA = 62+89.26 P.T. STA = 63+22.30	PROP. CURVE AL101-35 PI STA. = 74+79.51 Δ = 5° 40' 05" (LT) D = 19° 18' 05" R = 616.00' T = 30.49' L = 60.94' E = 1.35' P.C. STA = 74+49.02 P.T. STA = 75+09.96	PROP. CURVE AL101-36 PI STA. = 75+80.45 Δ = 8° 21' 35" (LT) D = 11° 19' 24" R = 506.00' T = 36.98' L = 73.83' E = 1.49' P.C. STA = 75+43.47 P.T. STA = 76+17.30	PROP. CURVE AL101-37 PI STA. = 76+85.80 Δ = 24° 19' 05" (LT) D = 88° 08' 50" R = 506.00' T = 14.00' L = 27.59' E = 1.49' P.C. STA = 76+71.80 P.T. STA = 76+99.38	PROP. CURVE AL101-38 PI STA. = 77+22.58 Δ = 14° 10' 50" (RT) D = 88° 08' 50" R = 65.00' T = 8.08' L = 16.09' E = 0.50' P.C. STA = 77+14.50 P.T. STA = 77+30.59
--	---	--	--	--	--	---	---

NAME	DATE

ILLINOIS DEPARTMENT OF TRANSPORTATION
ALIGNMENT, TIES AND BENCHMARKS

SCALE: VERT. 1" = 100'
HORIZ. 1" = 100'
DATE 3/30/2009

DRAWN BY EDT
CHECKED BY LMF