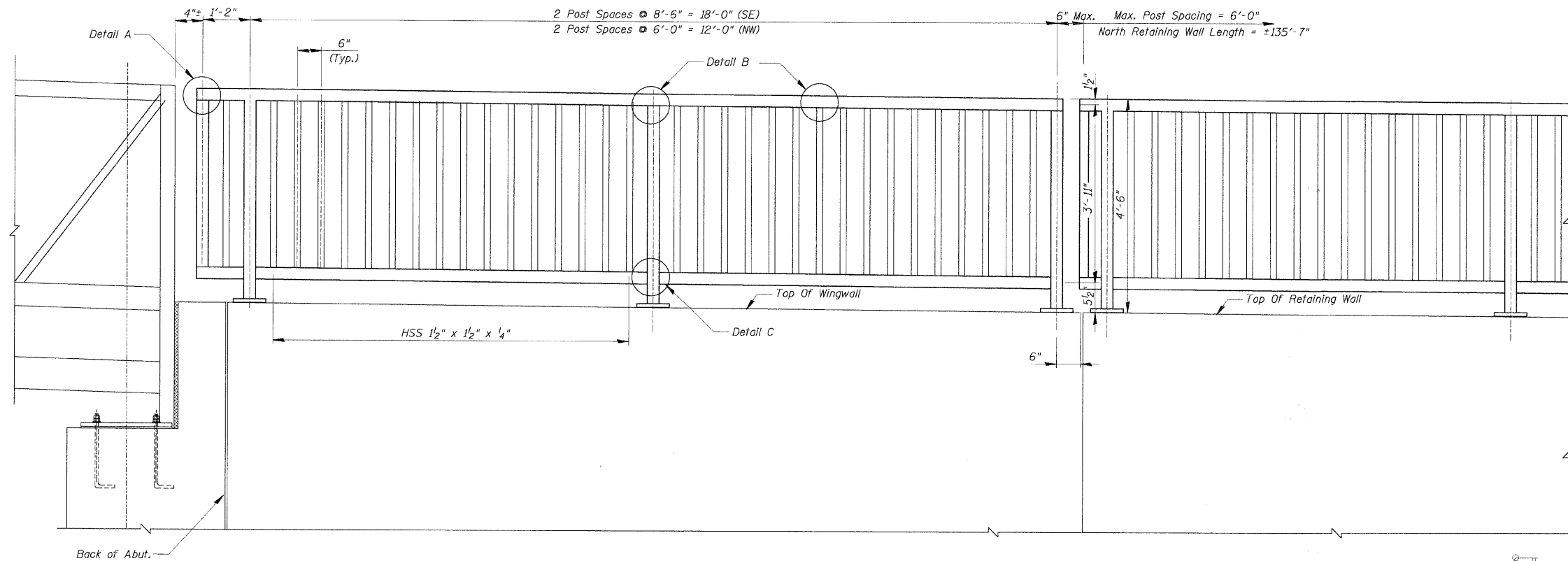


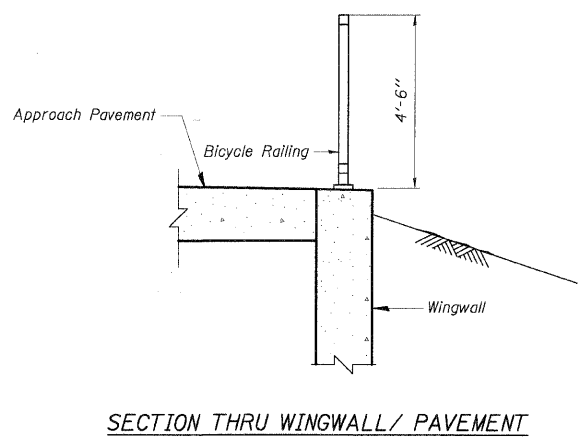
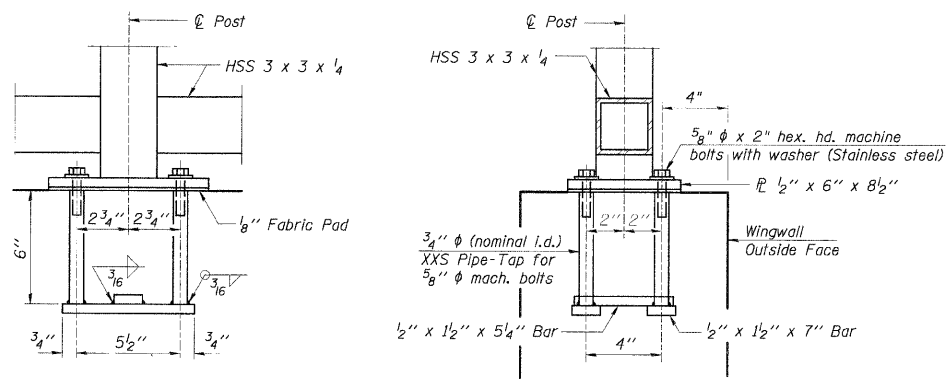
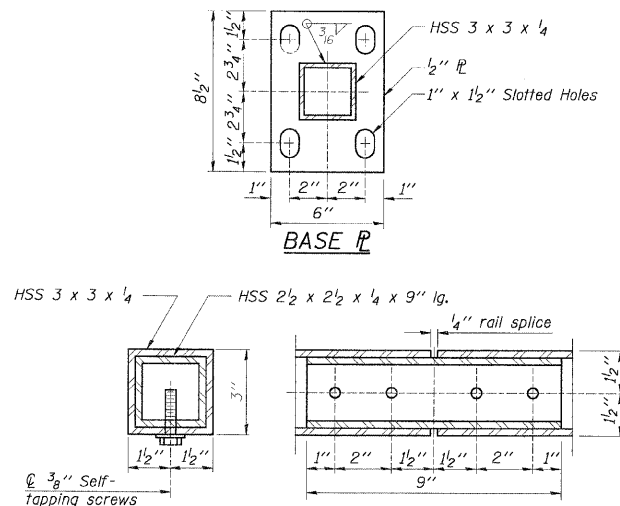
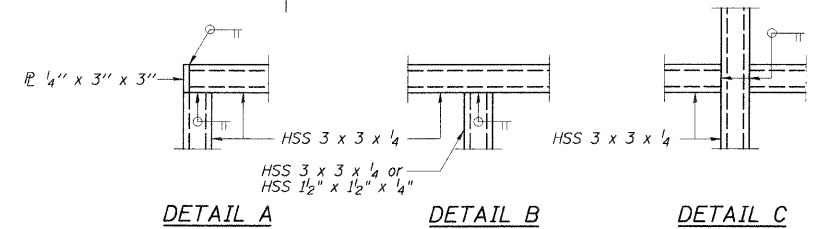
F.A.U. RTE.	SECTION	COUNTY	TOTAL SHEETS	SHEET NO.
---	99-00109-01-BT	DU PAGE	74	30
STA.		TO STA.		
FED. ROAD DIST. NO. 1		ILLINOIS FED. AID PROJECT		

CONTRACT No. 83728

- NOTES:
1. Railing shall be according to Section 509 of the Standard Specifications except as noted, and will be paid for at the Contract Unit Price per foot for Bicycle Railing, Special.
 2. Hollow structural tubing shall conform to the requirements of ASTM designation A 500, Grade B, structural tubing.
 3. All other steel shapes and plates shall conform to the requirements of AASHTO M 270M Grade 36.
 4. All posts, railing, splices, anchor devices and bent plates shall be painted according to Special Provision "Cleaning And Painting New Metal Structures"
 5. Space reinforcement to miss anchor rods.
 6. All post shall be vertical.



BICYCLE RAILING



REVISIONS	
NAME	DATE

ILLINOIS DEPARTMENT OF TRANSPORTATION
BRIDGE 2
STA. 90 + 40.00
BICYCLE RAILING DETAIL

SCALE: NOT TO SCALE
 DATE 3/30/2009
 DRAWN BY PDR
 CHECKED BY PLB

DATE	
BY	
DESIGNED	
CHECKED	
IN CHARGE	
PROJECT NO.	
DATE	
BY	
DATE	
BY	
DATE	
BY	

DATE	
BY	
DATE	
BY	
DATE	
BY	
DATE	
BY	
DATE	
BY	

3/30/2009