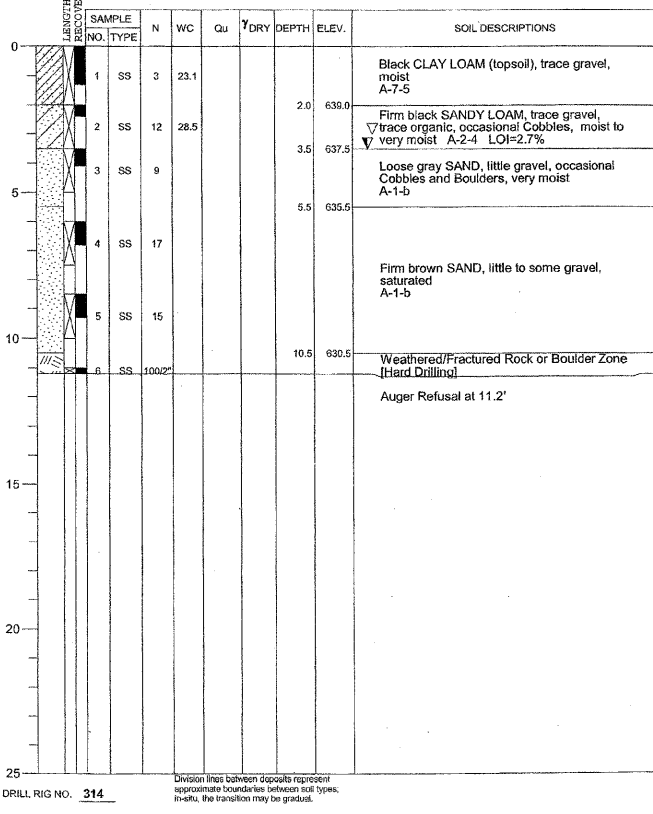
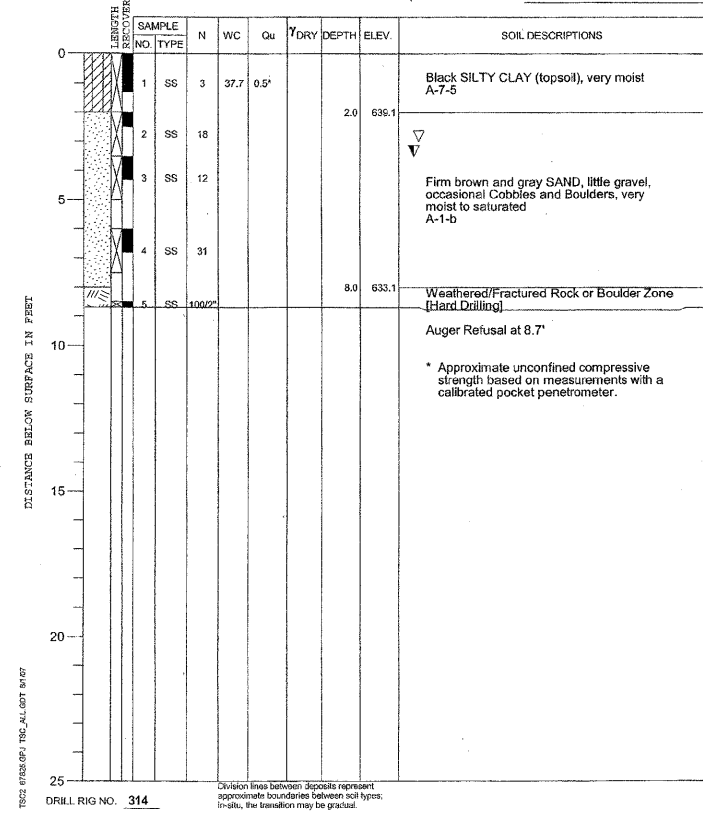


PROJECT **DuPage River Trail - Segment 4, Naperville, Illinois**
 CLIENT **Christopher B. Burke Engineering, Ltd., Rosemont, Illinois**
 BORING **2** DATE STARTED **7-11-07** DATE COMPLETED **7-11-07** JOB **L-67,825**
 ELEVATIONS WATER LEVEL OBSERVATIONS
 GROUND SURFACE **641.0** WHILE DRILLING **3.5'**
 END OF BORING **629.8** AT END OF BORING **3.0'**
 24 HOURS



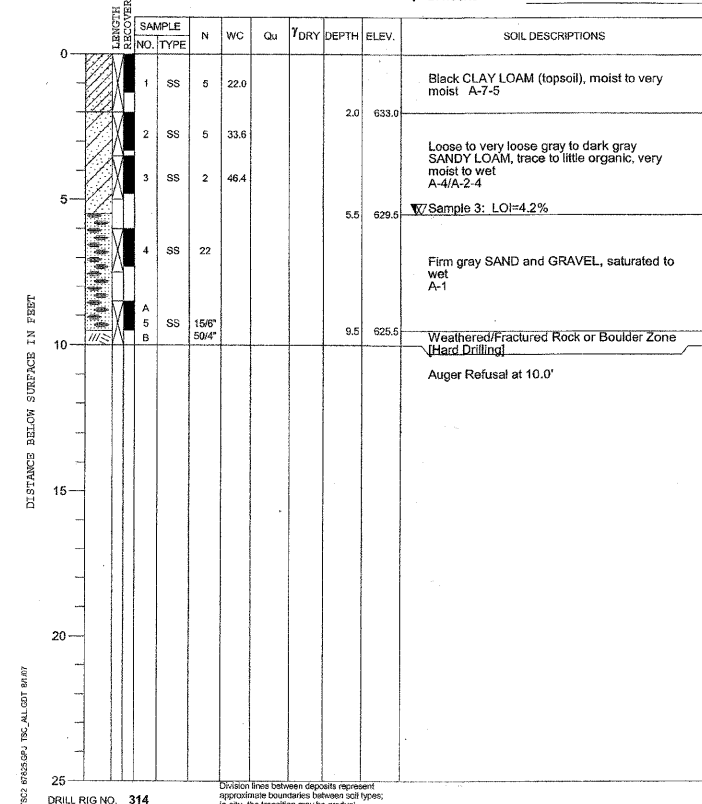
BRIDGE AT STA. 19+20.00

PROJECT **DuPage River Trail - Segment 4, Naperville, Illinois**
 CLIENT **Christopher B. Burke Engineering, Ltd., Rosemont, Illinois**
 BORING **3** DATE STARTED **7-11-07** DATE COMPLETED **7-11-07** JOB **L-67,825**
 ELEVATIONS WATER LEVEL OBSERVATIONS
 GROUND SURFACE **641.1** WHILE DRILLING **3.5'**
 END OF BORING **632.4** AT END OF BORING **3.0'**
 24 HOURS

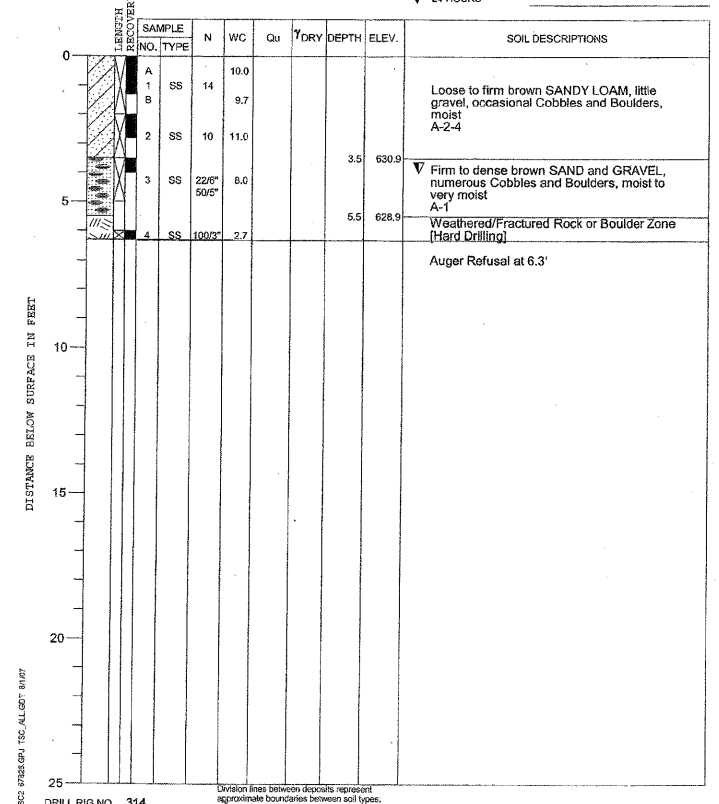


BRIDGE AT STA. 90+40.00

PROJECT **DuPage River Trail - Segment 4, Naperville, Illinois**
 CLIENT **Christopher B. Burke Engineering, Ltd., Rosemont, Illinois**
 BORING **10** DATE STARTED **7-11-07** DATE COMPLETED **7-11-07** JOB **L-67,825**
 ELEVATIONS WATER LEVEL OBSERVATIONS
 GROUND SURFACE **635.0** WHILE DRILLING **5.5'**
 END OF BORING **625.0** AT END OF BORING **5.5'**
 24 HOURS



PROJECT **DuPage River Trail - Segment 4, Naperville, Illinois**
 CLIENT **Christopher B. Burke Engineering, Ltd., Rosemont, Illinois**
 BORING **12** DATE STARTED **7-11-07** DATE COMPLETED **7-11-07** JOB **L-67,825**
 ELEVATIONS WATER LEVEL OBSERVATIONS
 GROUND SURFACE **634.4** WHILE DRILLING **4.0'**
 END OF BORING **628.1** AT END OF BORING **Dry**
 24 HOURS



REVISIONS	
NAME	DATE

ILLINOIS DEPARTMENT OF TRANSPORTATION
BRIDGE 1 AND BRIDGE 2
STA. 19+20.00 AND STA. 90+40.00
BORING LOGS

SCALE: NOT TO SCALE
 DATE 3/30/2009
 DRAWN BY PDR
 CHECKED BY PLB

DATE
 BY
 CHECKED
 PLAN
 NOTE BOOK
 NO.

DATE
 BY
 CHECKED
 PROFILE
 NOTE BOOK
 NO.