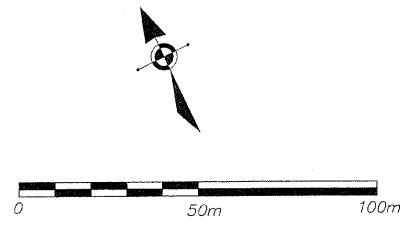


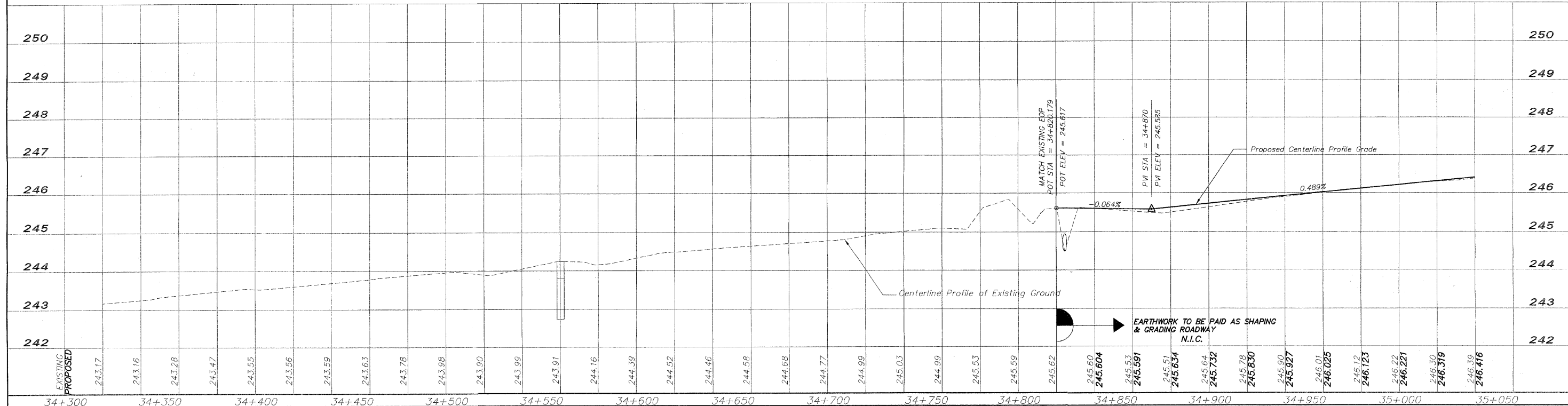
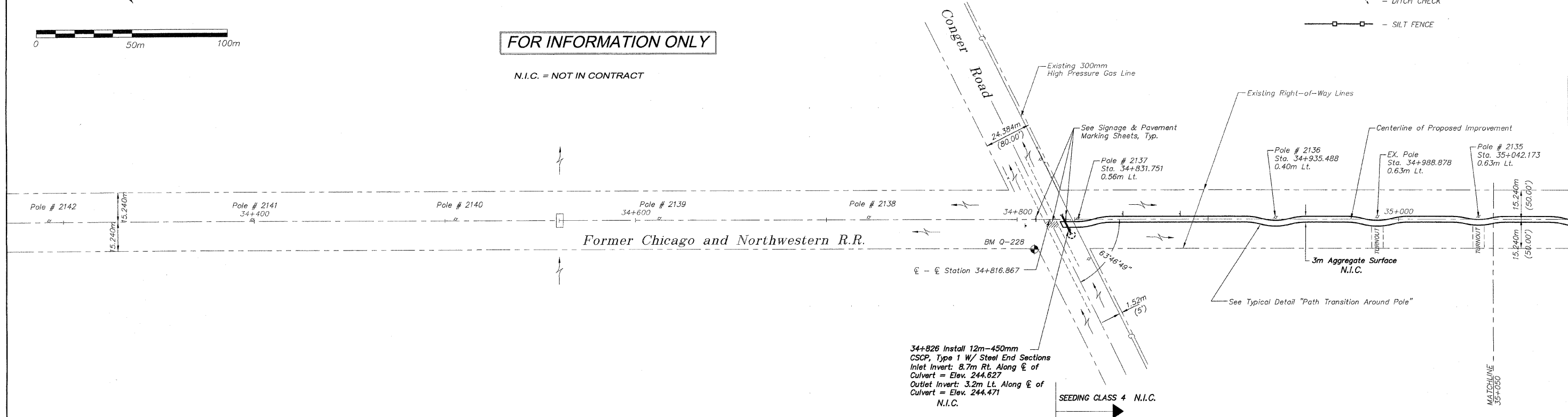
BM Q-228 Standard USGS Disk
Sta. 34+808.973, 16.133 m RT
Elev. 244.695

- EROSION CONTROL**
- INLET PROTECTION
 - CULVERT PIPE PROTECTION
 - DITCH CHECK
 - SILT FENCE



FOR INFORMATION ONLY

N.I.C. = NOT IN CONTRACT



EXISTING	PROPOSED
243.17	243.17
243.16	243.16
243.28	243.28
243.47	243.47
243.55	243.55
243.56	243.56
243.59	243.59
243.63	243.63
243.78	243.78
243.98	243.98
243.90	243.90
243.99	243.99
243.91	243.91
244.16	244.16
244.39	244.39
244.52	244.52
244.46	244.46
244.58	244.58
244.58	244.58
244.77	244.77
244.99	244.99
245.03	245.03
244.99	244.99
245.53	245.53
245.59	245.59
245.62	245.62
245.60	245.60
245.604	245.604
245.53	245.53
245.591	245.591
245.51	245.51
245.634	245.634
245.64	245.64
245.732	245.732
245.78	245.78
245.850	245.850
245.90	245.90
245.927	245.927
246.01	246.01
246.025	246.025
246.12	246.12
246.123	246.123
246.22	246.22
246.221	246.221
246.30	246.30
246.319	246.319
246.39	246.39
246.416	246.416

REVISIONS		
NO.	ITEM	DATE
2	REVIEW COMMENTS	1/22/09

PLOTTING SCALE: 1 : 1
DRAWN BY: REK
CHECKED BY:
DATE: DECEMBER, 2008

McClure
Engineering Associates, Inc.
7283 Argus Drive Rockford, Illinois 61107-5837
(815) 398-2332 FAX (815) 398-2485
Design Firm License: Illinois 184-000816
Copyright 2006 By McClure Engineering Associates, Inc.

PLAN & PROFILE 34+820/35+050
PECATONICA PRAIRIE PATH Contract 85443
WINNEBAGO COUNTY HIGHWAY DEPARTMENT SECTION 94-00267-00-BT
FILE NAME: G:\surveys\PECPATH\1ST RELEASE\98-037 pp34+820-35+050.dwg JOB NUMBER: 04-28-98-037

SHEET NO.
8
OF
98