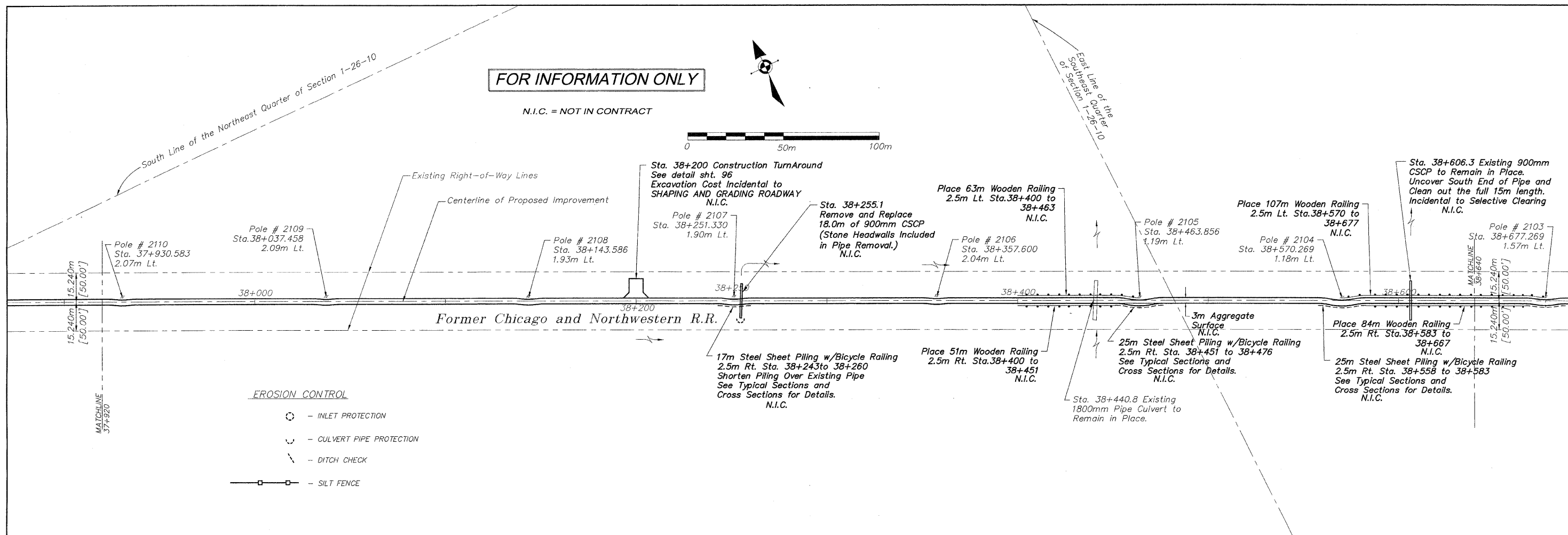
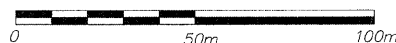


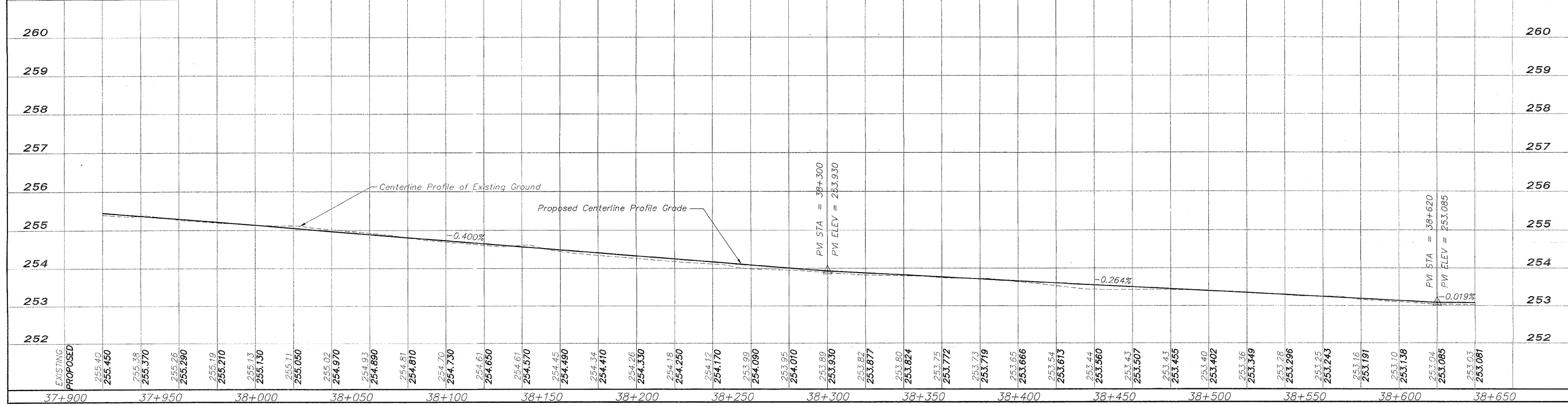
**FOR INFORMATION ONLY**

N.I.C. = NOT IN CONTRACT



**EROSION CONTROL**

- INLET PROTECTION
- CULVERT PIPE PROTECTION
- DITCH CHECK
- SILT FENCE



NO.	REVISIONS	DATE
2	REVIEW COMMENTS	1/22/09

NO.	ITEM	DATE
2	REVIEW COMMENTS	1/22/09

NO.	2	REVIEW COMMENTS	1/22/09
CHECKED BY:			
DATE:	DECEMBER, 2008		

7283 Argus Drive (815) 398-2332 Design Firm License: Illinois 184-000816 Copyright 2006 By McClure Engineering Associates, Inc.	<b>McClure</b> Engineering Associates, Inc. Rockford, Illinois 61107-5837 FAX (815) 398-2496
--	---

<b>PLAN AND PROFILE 37+920/38+640</b>	<b>SECTION 94-00267-00-BT</b>
WINNEBAGO COUNTY HIGHWAY DEPARTMENT	Contract 85 443
FILE NAME: G:\surveys\PECPATH\1ST RELEASE\98-037 pp37+920-38+640.dwg	JOB NUMBER: 04-28-98-037

SHEET NO.  
**13**  
OF  
**98**

D:\surveys\PECPATH\1ST RELEASE\98-037 pp37+920-38+640.dwg, Layout1, 3/4/2009 11:05:31 AM, 1:1, REK