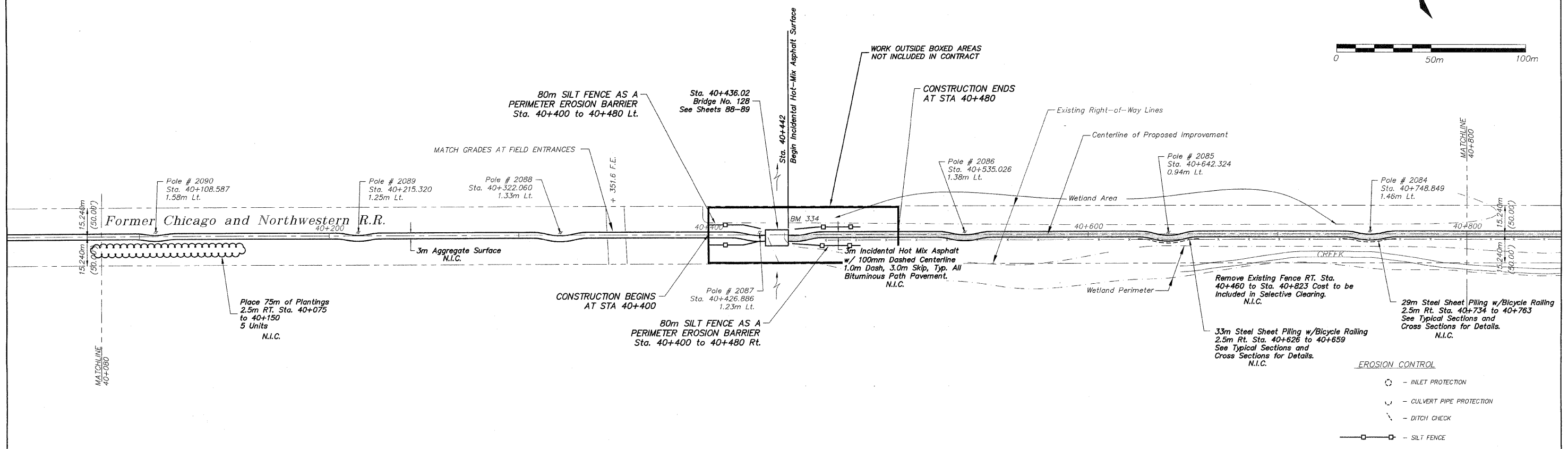
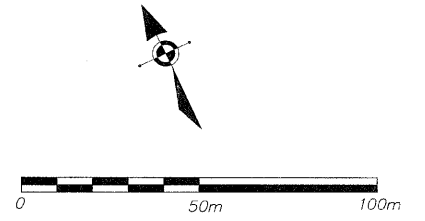
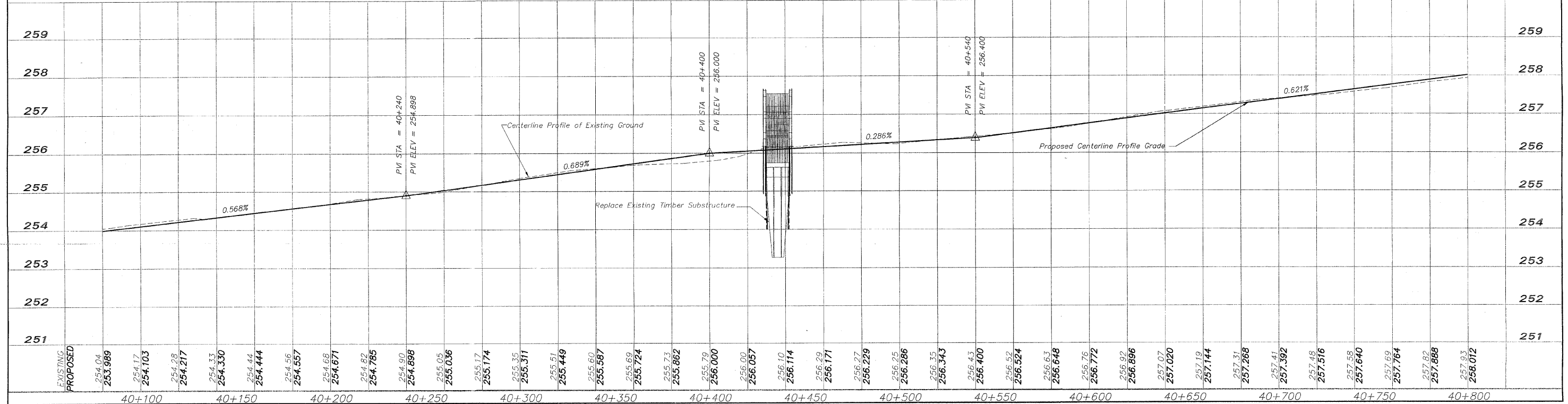


BM 334 Top of Bolt 2' Below the S.E.  
 Corner of Bridge No. 128  
 Sta. 40+442.036, 3.500m LT Elev. 255.703

N.I.C. = NOT IN CONTRACT



- EROSION CONTROL**
- - INLET PROTECTION
  - ⌋ - CULVERT PIPE PROTECTION
  - ⌋ - DITCH CHECK
  - - SILT FENCE



EXISTING	PROPOSED
254.04	253.989
254.17	254.103
254.28	254.217
254.33	254.330
254.44	254.444
254.56	254.557
254.68	254.671
254.82	254.785
254.90	254.898
255.05	255.036
255.17	255.174
255.35	255.311
255.51	255.449
255.60	255.587
255.69	255.69
255.73	255.724
255.79	255.79
256.00	256.000
256.057	256.057
256.10	256.10
256.114	256.114
256.29	256.29
256.171	256.171
256.27	256.27
256.229	256.229
256.25	256.25
256.266	256.266
256.35	256.35
256.343	256.343
256.43	256.43
256.400	256.400
256.52	256.52
256.524	256.524
256.63	256.63
256.648	256.648
256.76	256.76
256.772	256.772
256.92	256.92
256.896	256.896
257.07	257.07
257.020	257.020
257.19	257.19
257.144	257.144
257.31	257.31
257.268	257.268
257.41	257.41
257.392	257.392
257.48	257.48
257.516	257.516
257.58	257.58
257.640	257.640
257.69	257.69
257.764	257.764
257.82	257.82
257.888	257.888
257.93	257.93
258.012	258.012

REVISIONS		
NO.	ITEM	DATE
2	REVIEW COMMENTS	1/22/09

PLOTTING SCALE: 1 : 1  
 DRAWN BY: REK  
 CHECKED BY:  
 DATE: DECEMBER, 2008

**McClure**  
 Engineering Associates, Inc.  
 7283 Argus Drive Rockford, Illinois 61107-5837  
 (815) 398-2332 FAX (815) 398-2496  
 Design Firm License: Illinois 184-000816  
 Copyright 2006 By McClure Engineering Associates, Inc.

**PLAN AND PROFILE 40+080/40+800**  
 PEACATONICA PRAIRIE PATH Contract 85443  
 WINNEBAGO COUNTY HIGHWAY DEPARTMENT SECTION 94-00267-00-BT  
 FILE NAME: C:\surveys\PECPATH\1ST RELEASE\98-037 pp40+080-40+800.dwg JOB NUMBER: 04-28-98-037

SHEET NO.  
**16**  
**OF**  
**98**