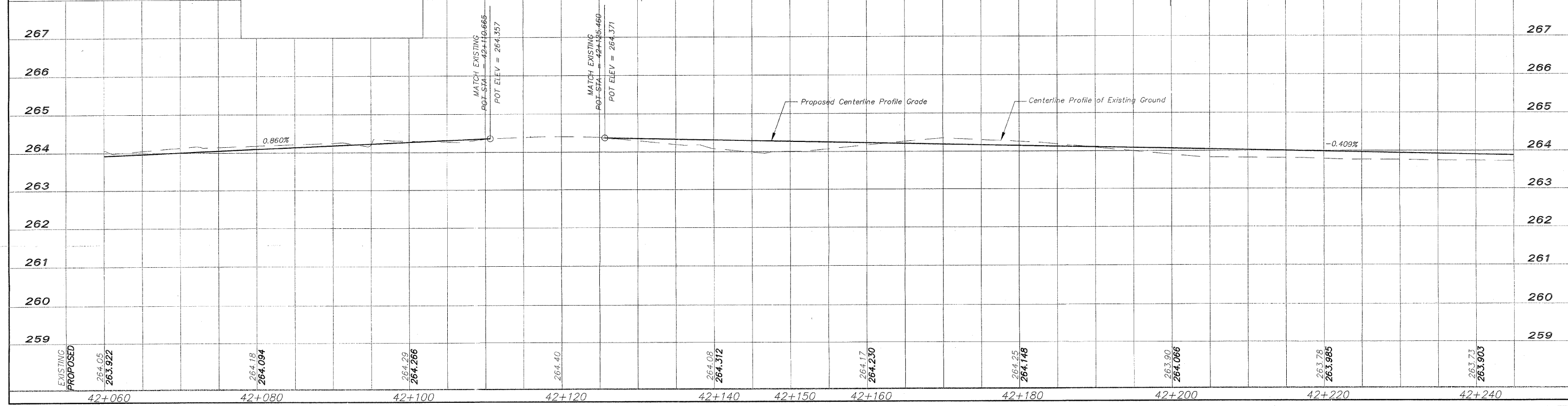
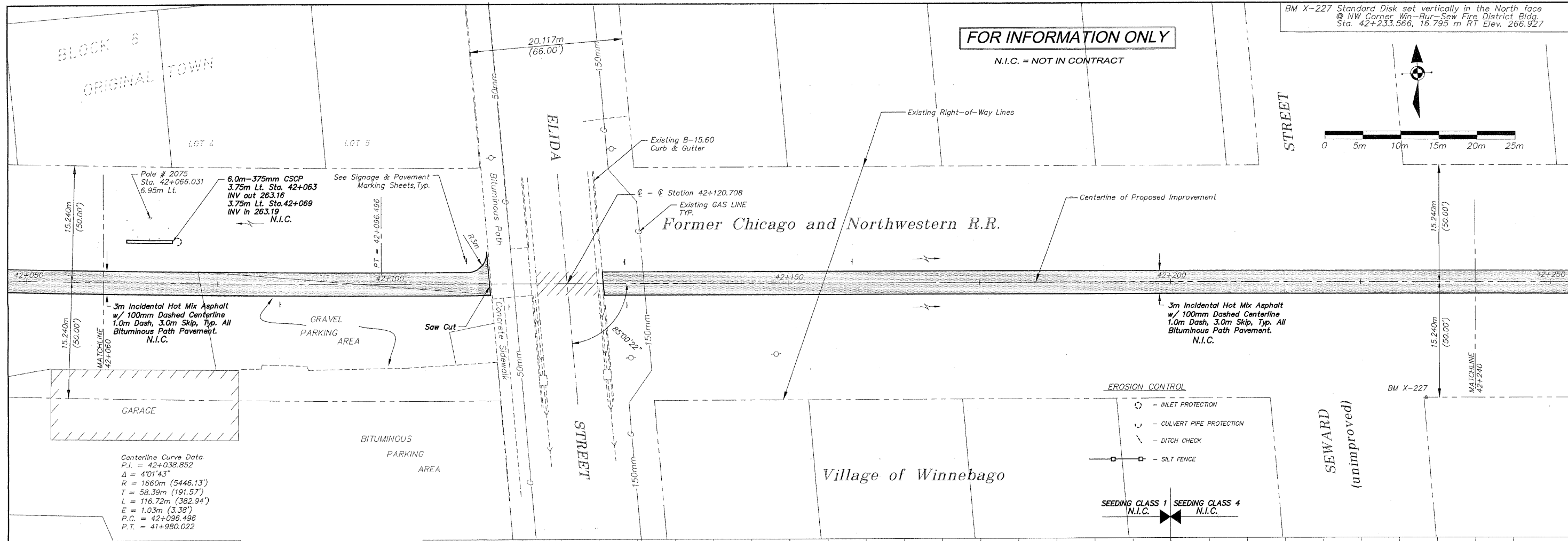
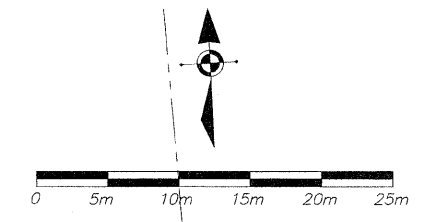


BM X-227 Standard Disk set vertically in the North face  
 @ NW Corner Win-Bur-Sew Fire District Bldg.  
 Sta. 42+233.566, 16.795 m RT Elev. 266.927

**FOR INFORMATION ONLY**  
 N.I.C. = NOT IN CONTRACT



NO.	REVIEW COMMENTS	DATE
2		1/22/09

REVISIONS		
NO.	ITEM	DATE
2		1/22/09

PLOTTING SCALE: 1 : 1  
 DRAWN BY: REK  
 CHECKED BY:  
 DATE: DECEMBER, 2008

**McClure**  
 Engineering Associates, Inc.  
 7282 Argus Drive Rockford, Illinois 61107-5837  
 (815) 398-2332 FAX (815) 398-2496  
 Design Firm License: Illinois 184-000816  
 Copyright 2006 By McClure Engineering Associates, Inc.

**PLAN AND PROFILE 42+060/42+240**  
 PEACATONICA PRAIRIE PATH Contract 85443  
 WINNEBAGO COUNTY HIGHWAY DEPARTMENT SECTION 94-00267-00-BT  
 FILE NAME: G:\surveys\PECPATH\1ST RELEASE\98-037 pp42+060-42+240.dwg JOB NUMBER: 04-28-98-037

SHEET NO.  
**21**  
 OF  
**98**

G:\surveys\PECPATH\1ST RELEASE\98-037 pp42+060-42+240.dwg, Post Elida Improvement, 3/4/2009 11:06:12 AM, 1:1, REK