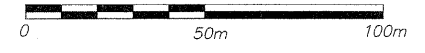


BM A-228 Standard USGS Disk  
Sta. 46+113.487, 10.363m RT  
Elev. 246.163

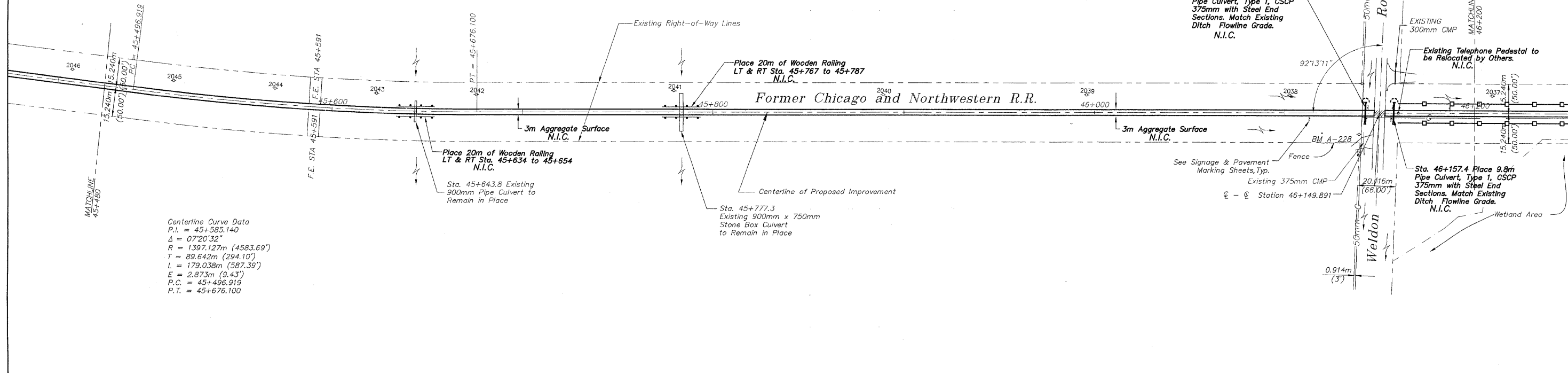
**FOR INFORMATION ONLY**

N.I.C. = NOT IN CONTRACT

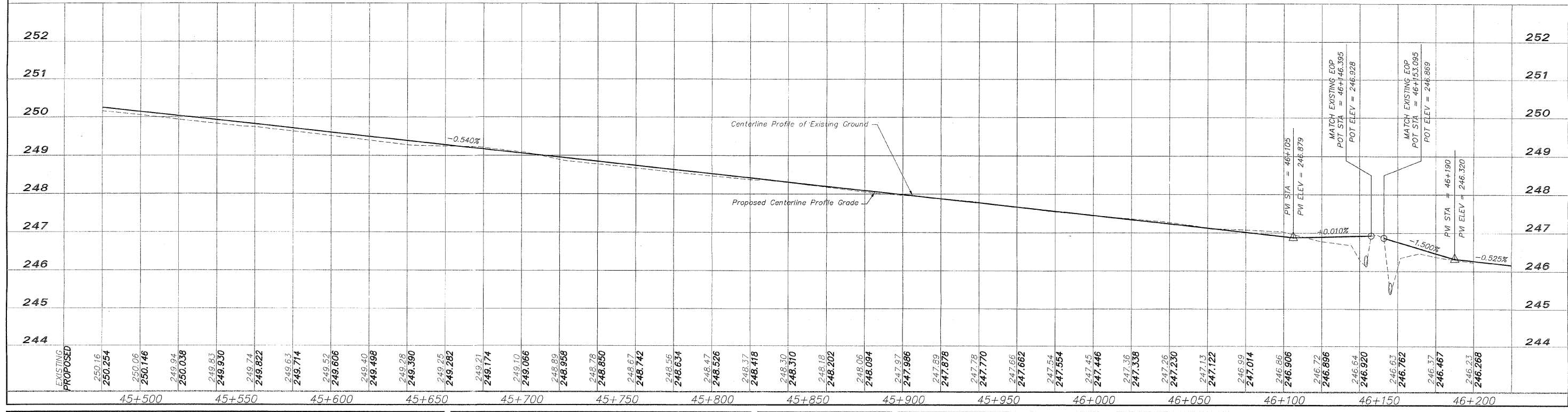


**EROSION CONTROL**

- - INLET PROTECTION
- ⌋ - CULVERT PIPE PROTECTION
- - - DITCH CHECK
- - SILT FENCE



Centerline Curve Data  
P.I. = 45+585.140  
Δ = 07°20'32"  
R = 1397.127m (4583.69')  
T = 89.642m (294.10')  
L = 179.038m (587.39')  
E = 2.873m (9.43')  
P.C. = 45+496.919  
P.T. = 45+676.100



REVISIONS		
NO.	ITEM	DATE
2	REVIEW COMMENTS	1/22/09

PLOTTING SCALE: 1 : 1  
DRAWN BY: REK  
CHECKED BY:  
DATE: DECEMBER, 2008

**McClure**  
Engineering Associates, Inc.  
7282 Argus Drive Rockford, Illinois 61107-5837  
(815) 398-2332 FAX (815) 398-2496  
Design Firm License: Illinois 184-000816  
Copyright 2006 By McClure Engineering Associates, Inc.

**PLAN AND PROFILE 45+480/46+200**  
PECATONICA PRAIRIE PATH Contract 85443  
WINNEBAGO COUNTY HIGHWAY DEPARTMENT SECTION 94-00267-00-BT  
FILE NAME: G:\surveys\PECPATH\1ST RELEASE\98-037 pp45+480-46+200.dwg JOB NUMBER: 04-28-98-037

SHEET NO.  
**28**  
OF  
**98**