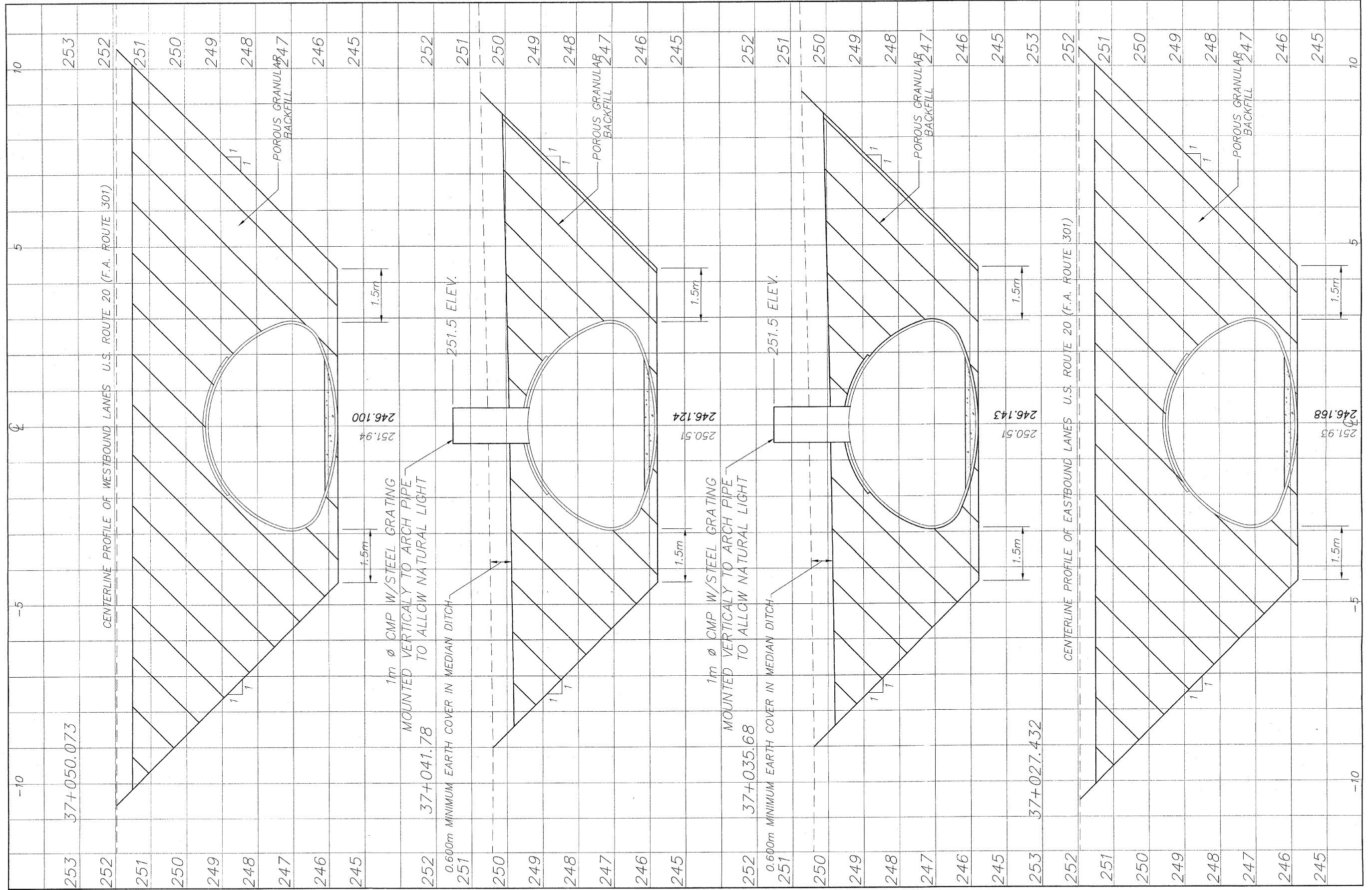


\\surveys\PECPATH\1ST RELEASE\98-037 sections.dwg, 37+050.1, 3/4/2009 11:20:17 AM, 1:0.05, REK



253	252	251	250	249	248	247	246	245	252	251	250	249	248	247	246	245	252	251	250	249	248	247	246	245
-----	-----	-----	-----	-----	-----	-----	-----	-----	-----	-----	-----	-----	-----	-----	-----	-----	-----	-----	-----	-----	-----	-----	-----	-----

REVISIONS		
NO.	ITEM	DATE
2	REVIEW COMMENTS	1/22/09

PLOTTING SCALE:	1 : 1
DRAWN BY:	REK
CHECKED BY:	
DATE:	DECEMBER, 2008

McClure
Engineering Associates, Inc.

7282 Argus Drive
Rockford, Illinois 61107-5837
(815) 398-2332 FAX (815) 398-2496

Design Firm License: Illinois 184-000816
Copyright 2006 By McClure Engineering Associates, Inc.

CROSS SECTIONS 37+027/37+050.1

PECATONICA PRAIRIE PATH Cont. of 85443

WINNEBAGO COUNTY HIGHWAY DEPARTMENT SECTION 94-00267.00-BT

FILE NAME: G:\surveys\PECPATH\1ST RELEASE\98-037 sections.dwg JOB NUMBER: 04-28-98-037

SHEET NO.	39
OF	98
	98