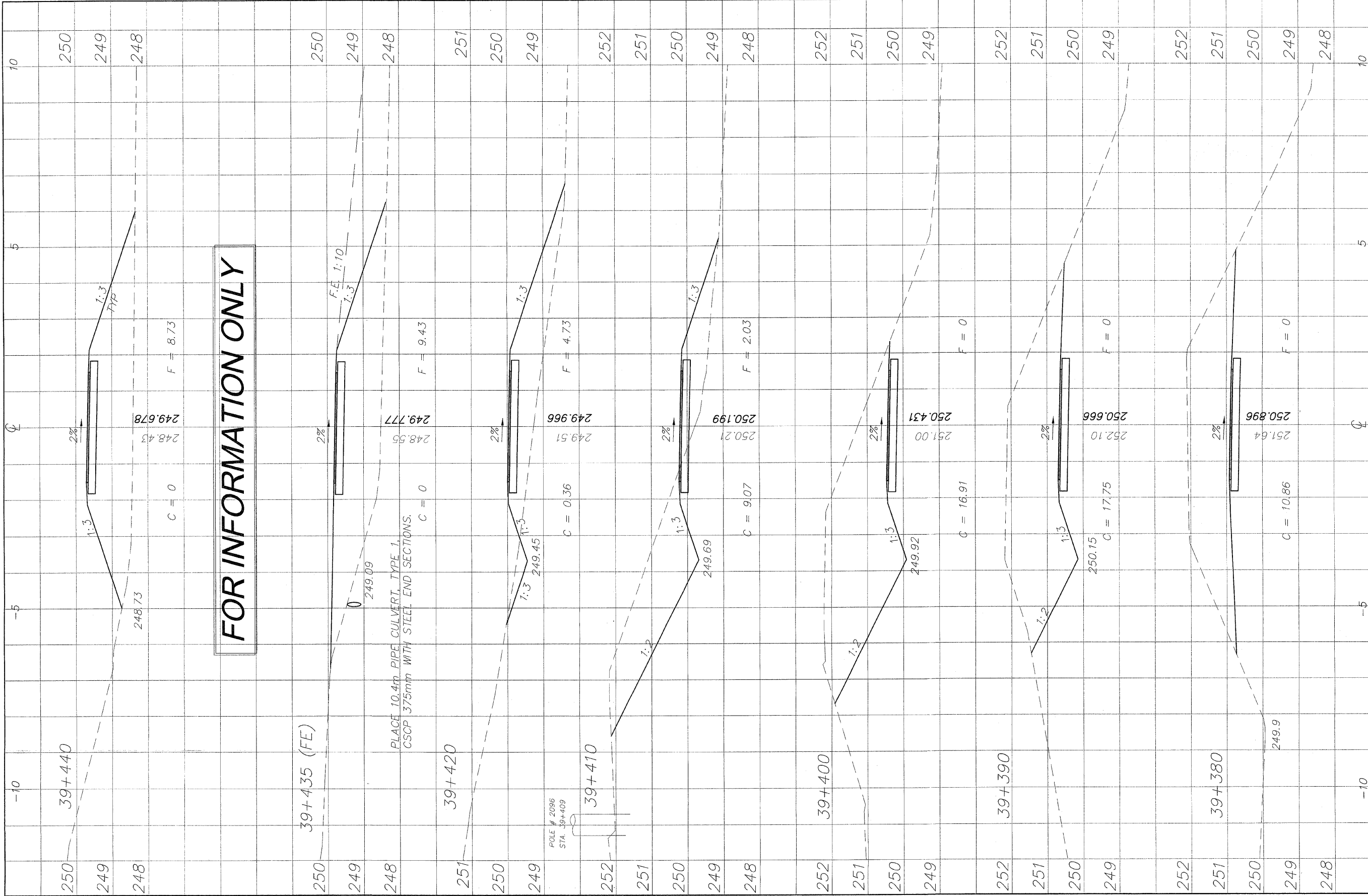


\\surveys\PECPATH\1ST RELEASE\98-037 sections.dwg, 39+390 - 39+450, 3/4/2009 11:22:19 AM, 1:0.05, REK



NO.	ITEM	DATE
2	REVIEW COMMENTS	1/22/09

REVISIONS		
NO.	ITEM	DATE
2	REVIEW COMMENTS	1/22/09

PLOTTING SCALE:	1 : 1
DRAWN BY:	REK
CHECKED BY:	
DATE:	DECEMBER, 2008

McClure
Engineering Associates, Inc.
7282 Argus Drive
Rockford, Illinois 61107-5837
(615) 398-2332 FAX (615) 398-2496
Design Firm License: Illinois 184-000816
Copyright 2006 By McClure Engineering Associates, Inc.

CROSS SECTIONS 39+390/39+450
PECATONICA PRAIRIE PATH Contract 85443
WINNEBAGO COUNTY HIGHWAY DEPARTMENT SECTION 94-00267-00-BT
FILE NAME: G:\surveys\PECPATH\1ST RELEASE\98-037 sections.dwg JOB NUMBER: 04-28-98-037

SHEET NO.
47
OF
98