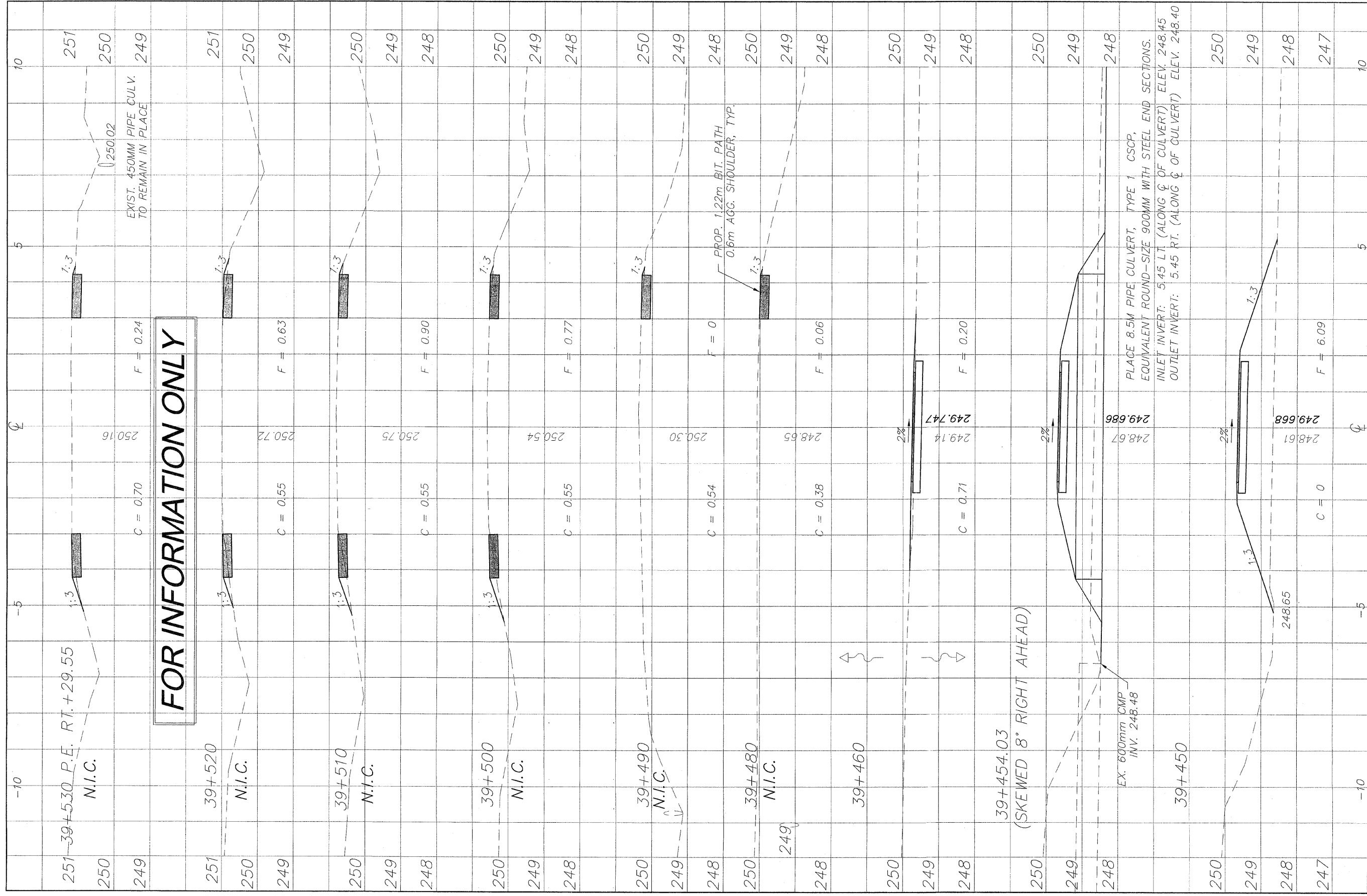


G:\surveys\PECPATH\1ST RELEASE\98-037 sections.dwg, 39+452.4 - 39+530, 3/4/2009 11:22:34 AM, 1:0.05, REK



FOR INFORMATION ONLY

251	39+530 P.E. RT. +29.55	N.I.C.	C = 0.70	250.16	F = 0.24	250
250						250
249						249

REVISIONS		
NO.	ITEM	DATE
2	REVIEW COMMENTS	1/22/09

PLOTTING SCALE: 1 : 1 DRAWN BY: REK CHECKED BY: DATE: DECEMBER, 2008

McClure
 Engineering Associates, Inc.

7282 Argus Drive Rockford, Illinois 61107-5837
 (815) 398-2332 FAX (815) 398-2496
 Design Firm License: Illinois 164-000816
 Copyright 2006 By McClure Engineering Associates, Inc.

CROSS SECTIONS 39+452.4/39+530
 PECATONICA PRAIRIE PATH Contract 85443
 WINNEBAGO COUNTY HIGHWAY DEPARTMENT SECTION 94-00267-00-BT

FILE NAME: G:\surveys\PECPATH\1ST RELEASE\98-037 sections.dwg JOB NUMBER: 04-28-98-037

SHEET NO.
48
 OF
98