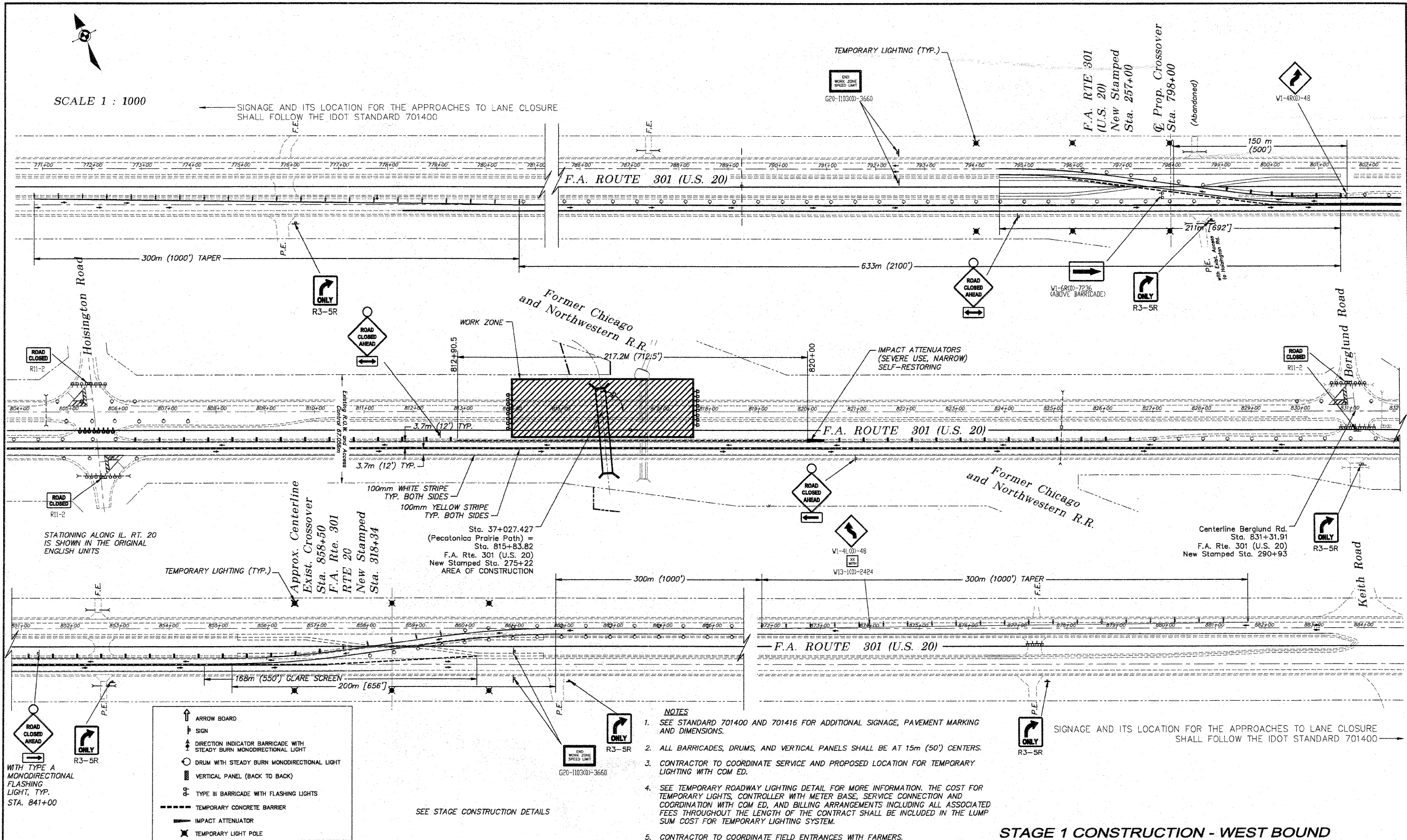


SCALE 1 : 1000

SIGNAGE AND ITS LOCATION FOR THE APPROACHES TO LANE CLOSURE SHALL FOLLOW THE IDOT STANDARD 701400



STATIONING ALONG IL. RT. 20 IS SHOWN IN THE ORIGINAL ENGLISH UNITS

- ↑ ARROW BOARD
- ↑ SIGN
- ↑ DIRECTION INDICATOR BARRICADE WITH STEADY BURN MONODIRECTIONAL LIGHT
- DRUM WITH STEADY BURN MONODIRECTIONAL LIGHT
- ▨ VERTICAL PANEL (BACK TO BACK)
- ⊥ TYPE III BARRICADE WITH FLASHING LIGHTS
- TEMPORARY CONCRETE BARRIER
- IMPACT ATTENUATOR
- ✱ TEMPORARY LIGHT POLE

- NOTES**
- SEE STANDARD 701400 AND 701416 FOR ADDITIONAL SIGNAGE, PAVEMENT MARKING AND DIMENSIONS.
 - ALL BARRICADES, DRUMS, AND VERTICAL PANELS SHALL BE AT 15m (50') CENTERS.
 - CONTRACTOR TO COORDINATE SERVICE AND PROPOSED LOCATION FOR TEMPORARY LIGHTING WITH COM ED.
 - SEE TEMPORARY ROADWAY LIGHTING DETAIL FOR MORE INFORMATION. THE COST FOR TEMPORARY LIGHTS, CONTROLLER WITH METER BASE, SERVICE CONNECTION AND COORDINATION WITH COM ED, AND BILLING ARRANGEMENTS INCLUDING ALL ASSOCIATED FEES THROUGHOUT THE LENGTH OF THE CONTRACT SHALL BE INCLUDED IN THE LUMP SUM COST FOR TEMPORARY LIGHTING SYSTEM.
 - CONTRACTOR TO COORDINATE FIELD ENTRANCES WITH FARMERS.

SIGNAGE AND ITS LOCATION FOR THE APPROACHES TO LANE CLOSURE SHALL FOLLOW THE IDOT STANDARD 701400

STAGE 1 CONSTRUCTION - WEST BOUND

NO.	REVISIONS	DATE
2	REVIEW COMMENTS	1/22/09
3	REVIEW COMMENTS	3/9/09

NO.	ITEM	DATE
2	REVIEW COMMENTS	1/22/09
3	REVIEW COMMENTS	3/9/09

PLOTTING SCALE: 1 : 1
 DRAWN BY: REK
 CHECKED BY:
 DATE: DECEMBER, 2008

McClure
 Engineering Associates, Inc.
 7282 Argus Drive Rockford, Illinois 61107-5837
 (815) 398-2332 FAX (815) 398-2496
 Design Firm License: Illinois 184-000816
 Copyright 2008 By McClure Engineering Associates, Inc.

U.S. ROUTE 20 CROSSOVER
 PECATONICA PRAIRIE PATH Contract 85443
 WINNEBAGO COUNTY HIGHWAY DEPARTMENT SECTION 94-00267-00-BT
 FILE NAME: G:\surveys\PECPATH\1ST RELEASE\98-037 route 20 x-over.dwg JOB NUMBER: 04-26-98-037

SHEET NO.
75
 OF
98

G:\surveys\PECPATH\1ST RELEASE\98-037 route 20 x-over.dwg, STAGE 1 WEST BOUND, 3/15/2009 8:42:17 AM, 1:25.4, REK