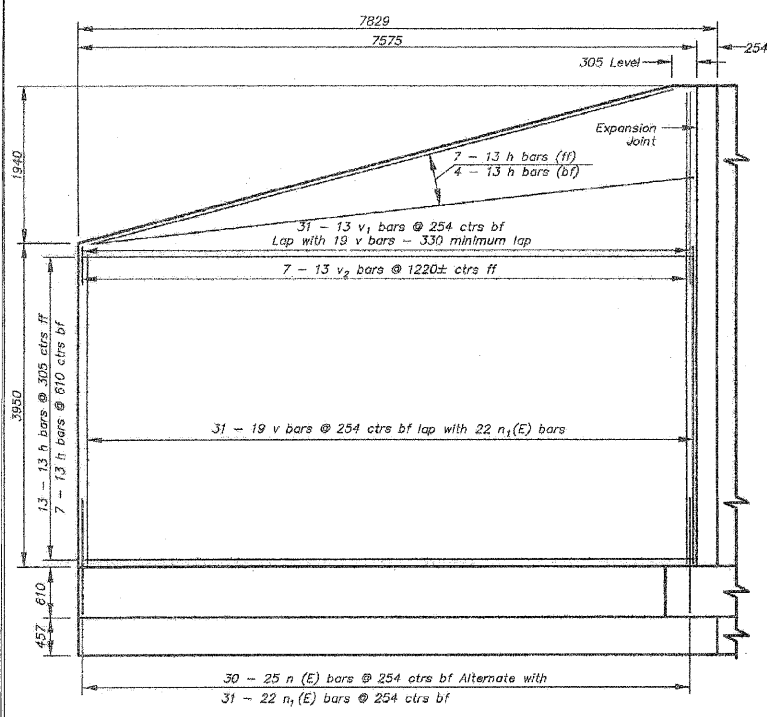
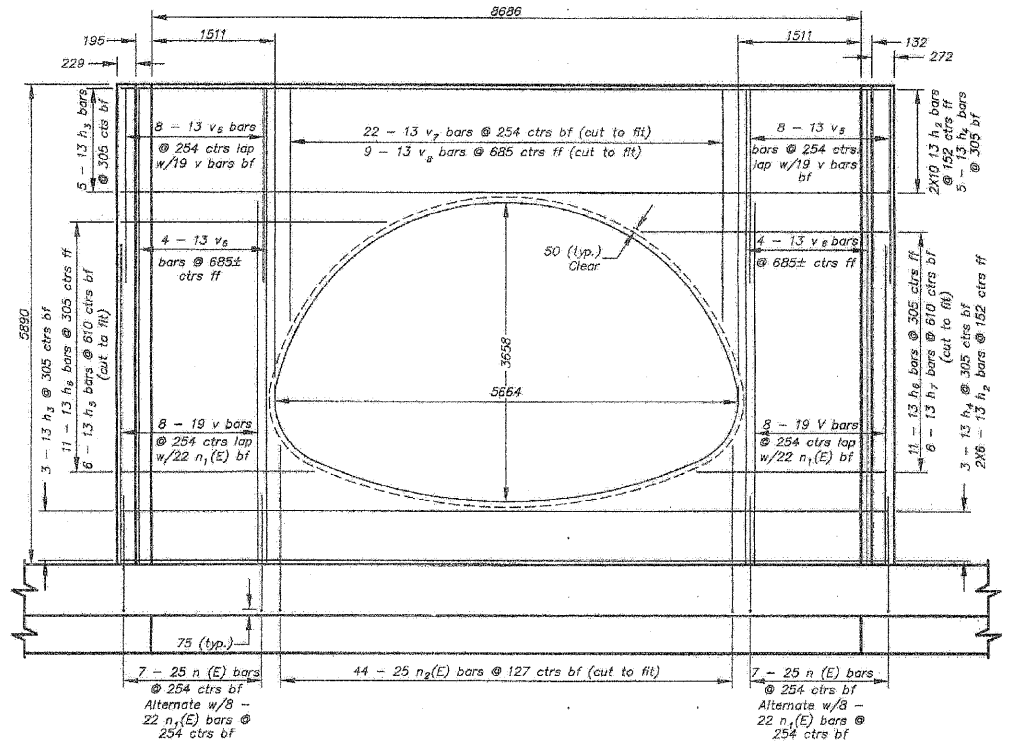


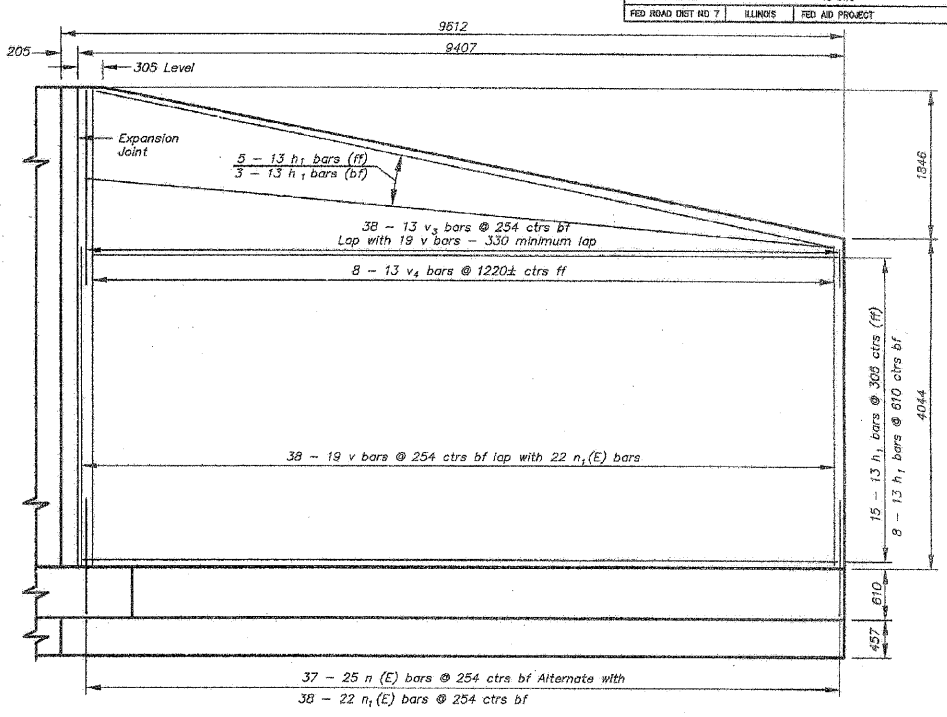
FILE NO.	SECTION	COUNTY	SHEET NO.
301 (U.S. 20)	97-00267-00-87	WINNEBAGO	3
STA. 815+83.82	TO STA.		
FED. ROAD DIST. NO. 7	ILLINOIS	FED. AID PROJECT	



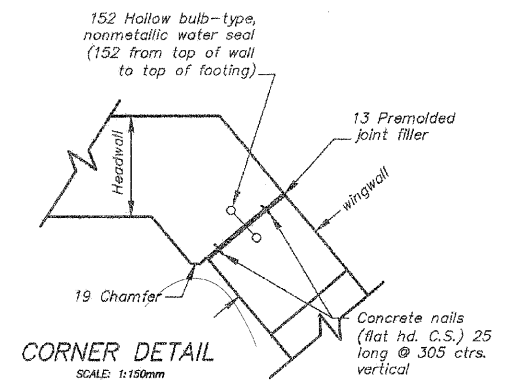
ELEVATION VIEW - WINGS ② & ④
SCALE: 1:2000mm



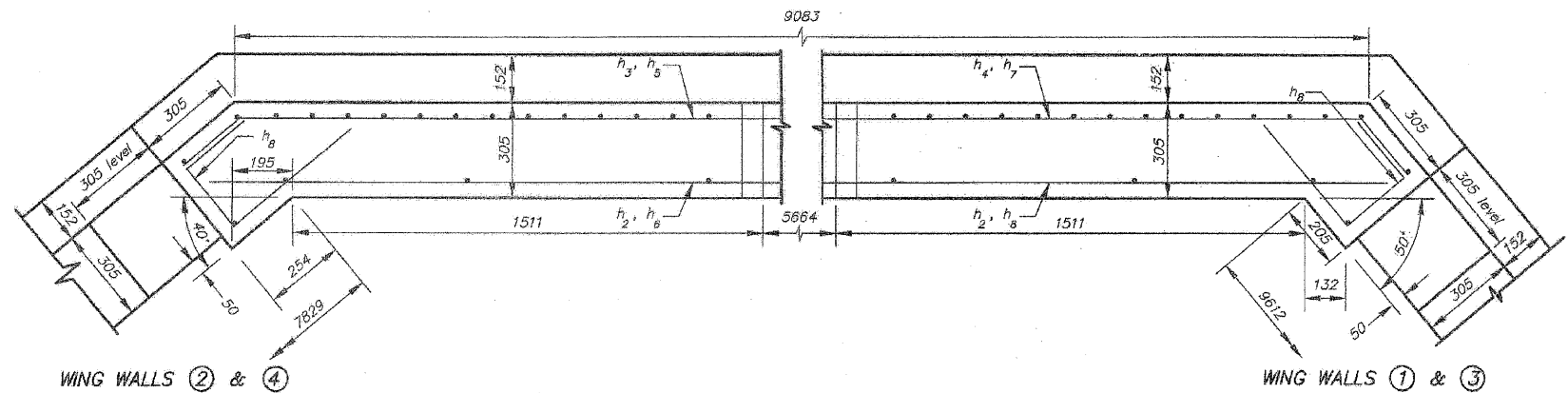
ELEVATION VIEW - HEADWALL
SCALE: 1:2000mm



ELEVATION VIEW - WINGS ① & ③
SCALE: 1:2000mm



CORNER DETAIL
SCALE: 1:150mm



WING WALLS ② & ④

HEADWALL PLAN VIEW
SCALE: 1:500mm

WING WALLS ① & ③

NOTE:
bf = back face
ff = front face

ILLINOIS DEPARTMENT OF TRANSPORTATION
WING WALL STRUCTURAL DETAILS
PECATONICA PRAIRIE PATH
UNDER F.A. ROUTE 301 (U.S.20)
WINNEBAGO COUNTY
STRUCTURE NO. 101-0185



REVISIONS	
NO.	DATE

SCALE: PER VIEW
DATE: AUGUST 13, 2007
DRAWN BY: JUD MEAL-M
CHECKED BY: JTT MEAL-M

REVISIONS		
NO.	ITEM	DATE
2	REVIEW COMMENTS	1/22/09

PLOTTING SCALE: 1:1
DRAWN BY: REK
CHECKED BY:
DATE: DECEMBER, 2008

McClure
Engineering Associates, Inc.
7282 Argus Drive
Rockford, Illinois 61107-5837
(815) 398-2332 FAX (815) 398-2496
Design Firm License: Illinois 184-000816
Copyright 2006 By McClure Engineering Associates, Inc.

ROUTE 20 PATH CROSSING-HEADWALL
PECATONICA PRAIRIE PATH Contract 85443
WINNEBAGO COUNTY HIGHWAY DEPARTMENT SECTION 94-00267-00-BT
FILE NAME: G:\surveys\PECPATH\1ST RELEASE\98-037 headwall.dwg
JOB NUMBER: 04-28-98-037

SHEET NO.
81
OF
98