

**BENCH MARK**

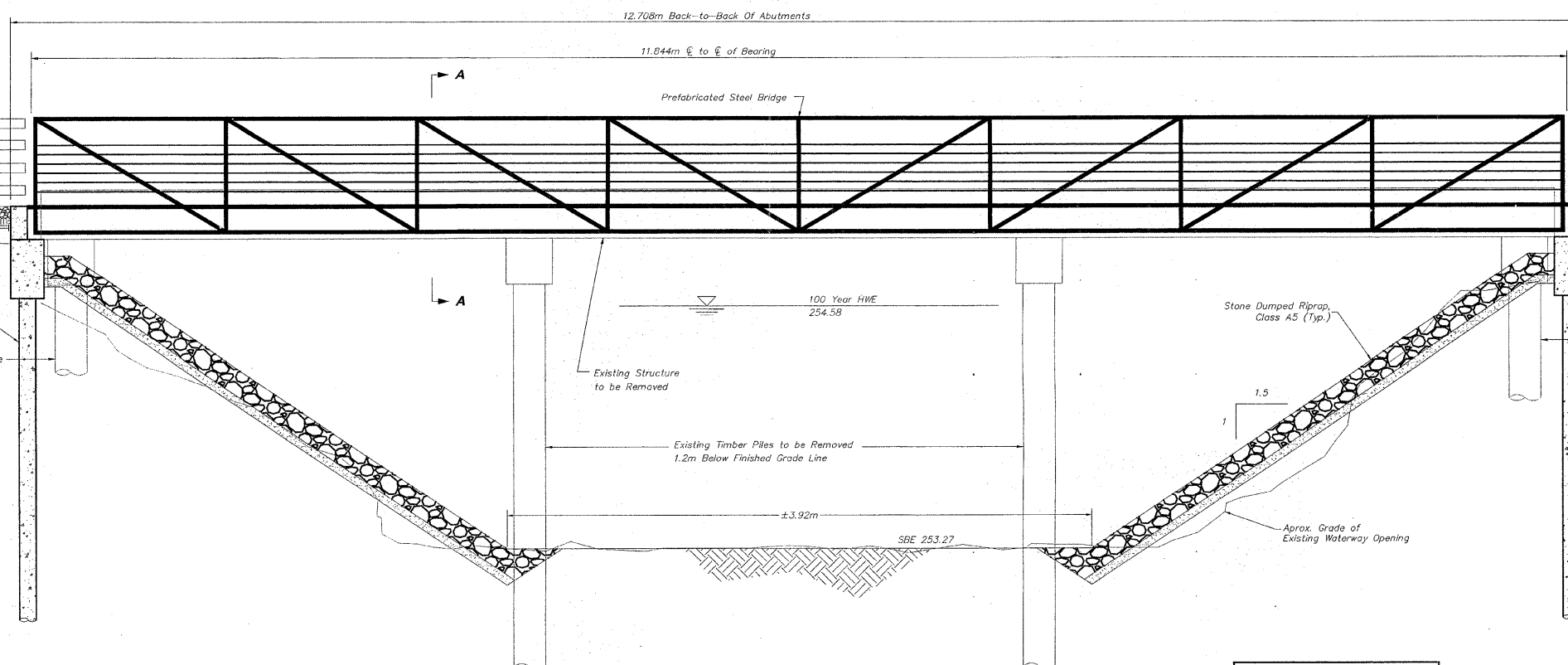
BM 334 Top Of Bolt 2' Below  
The S.E. Corner Of Bridge 128  
Station 40+442.036 3.500m Lt  
Elev. = 255.703

Pole #2087

610mm# Drilled Shaft  
Remove Existing Abutment Pile  
1.2m Below Finished Grade

**DRILLED SHAFT DATA**

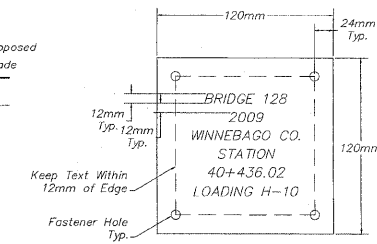
Type & Size: Rein. Conc. Drilled Shaft, 610mm#  
F<sub>c</sub> = 27.5 MPa, f<sub>y</sub> = 420 MPa  
No. Req'd: 4 (2 Per Abutment)  
Capacity: 478.8 kPa - Per Shaft  
Est. Length: 2 @ 5.014m - West Abutment  
2 @ 5.051m - East Abutment



**ELEVATION**

NOT TO SCALE

NOTE:  
DIMENSIONS AND ELEVATIONS MAY VARY WITH PREFABRICATED BRIDGE MANUFACTURER. DETERMINE ACTUAL BACK WALL HEIGHT AND BRIDGE SEAT ELEVATION IN ACCORDANCE WITH SHOP DRAWINGS SUPPLIED FOR THIS PROJECT.



**NAME PLATE**

**BILL OF MATERIALS - BRIDGE 128**

ITEM	UNIT	QUANTITY
EXISTING STRUCTURE REMOVAL	LS	1
CONCRETE STRUCTURES	CM	15.59
DRILLED SHAFT IN SOIL	CM	5.35
DRILLED SHAFT IN ROCK	CM	0.54
REINFORCEMENT BARS	KG	1260
PEDESTRIAN BRIDGE SUPERSTRUCTURE	SM	43.5
STONE DUMPED RIPRAP, CLASS A5	SM	131
WOOD RAIL	M	9.75
ANCHOR BOLTS, M20	EA	8
NAME PLATE	EA	1
MONODIRECTIONAL PRISMATIC BARRIER REFLECTOR	EA	12
FILTER FABRIC	SM	131
POROUS GRANULAR EMBANKMENT	CM	10

**DESIGN LOADING**

H-10

**DESIGN STRESSES**

f<sub>c</sub> = 24 MPa (FIELD POURED)  
Reinforcing f<sub>y</sub> = 420 MPa

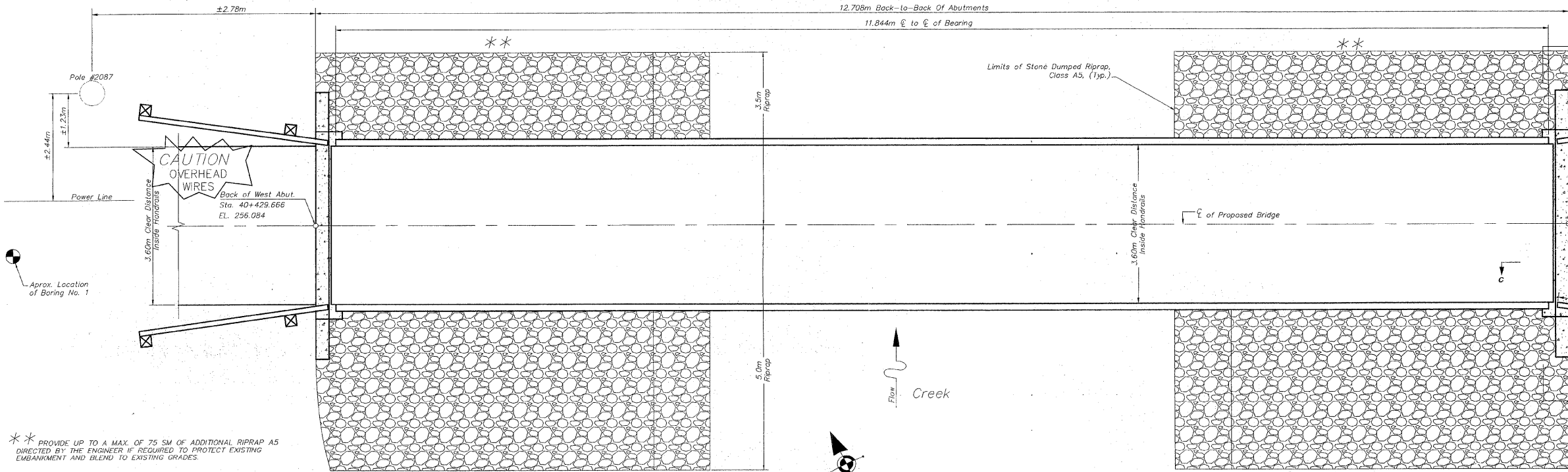
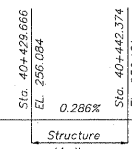
**DESIGN SPECIFICATIONS**

2002 AASHTO Standard Specifications - 17th Edition

**SEISMIC DATA**

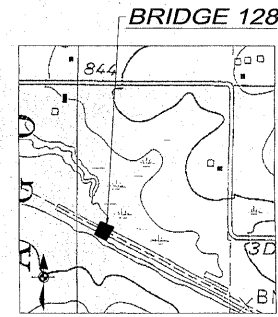
Seismic Performance Category (SPC) = A  
Bedrock Acceleration Coefficient (4) = 3.25%  
Site Coefficient(s) = 1.0

**PROFILE GRADE**

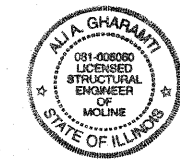


**PLAN**

NOT TO SCALE



**LOCATION SKETCH**



Signature: *[Signature]*  
Date: 3/5/09  
Exp. Date: 11/30/10

**GENERAL PLAN & ELEVATION  
OVER COOLIDGE CREEK  
SECTION 94-00267-00-BT  
WINNEBAGO COUNTY  
STATION 40+436.02**

REVISIONS		
NO.	ITEM	DATE
1	Additional Reinforcement to Abutments	1/19/2009
2	IDOT Review Comments and Internal Review	1/28/2009

PLOTTING SCALE: 1 : 1  
DRAWN BY: PLH/JRC/CDS  
CHECKED BY:  
DATE: DECEMBER, 2008

**McClure**  
Engineering Associates, Inc.  
7282 Argus Drive  
Rockford, Illinois 61107-5837  
(815) 398-2332 FAX (815) 398-2496  
Design Firm License: Illinois 154-000816  
Copyright 2009 By McClure Engineering Associates, Inc.

**BRIDGE NO. 128 STA. 40+436.02**  
PECATONICA PRAIRIE PATH Contract 85443  
WINNEBAGO COUNTY HIGHWAY DEPARTMENT SECTION 94-00267-00-BT  
FILE NAME: G:\surveys\PECPATH\1ST RELEASE\98-037 b128.dwg JOB NUMBER: 04-28-98-037

SHEET NO.  
**88  
OF  
98**