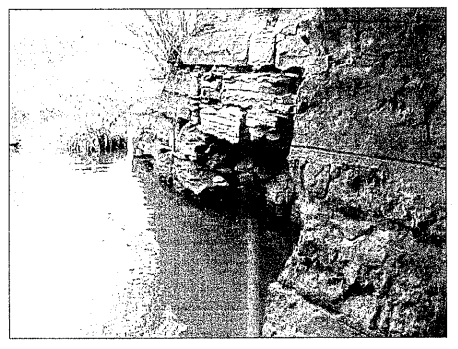


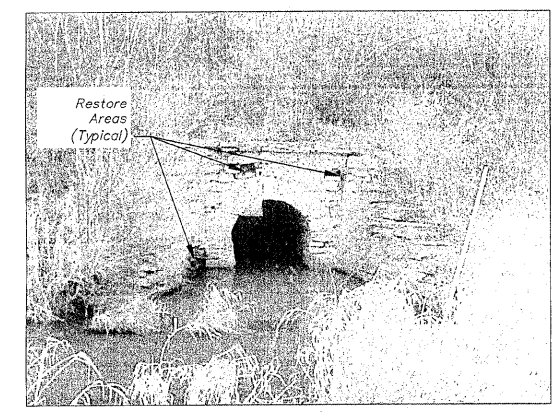
ELEVATION NOT TO SCALE



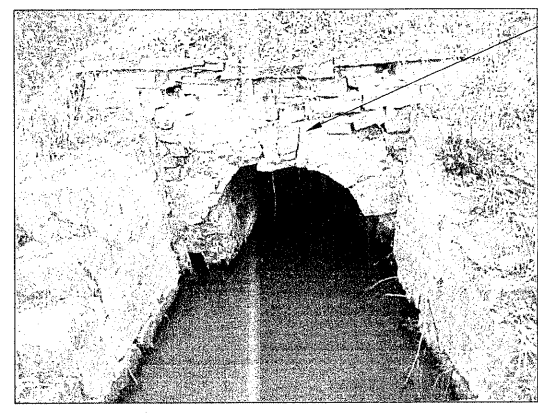
Interior East Wall Section Towards North End (Looking South/Upstream)



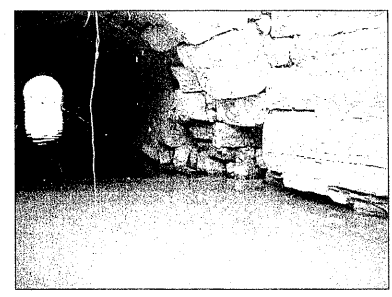
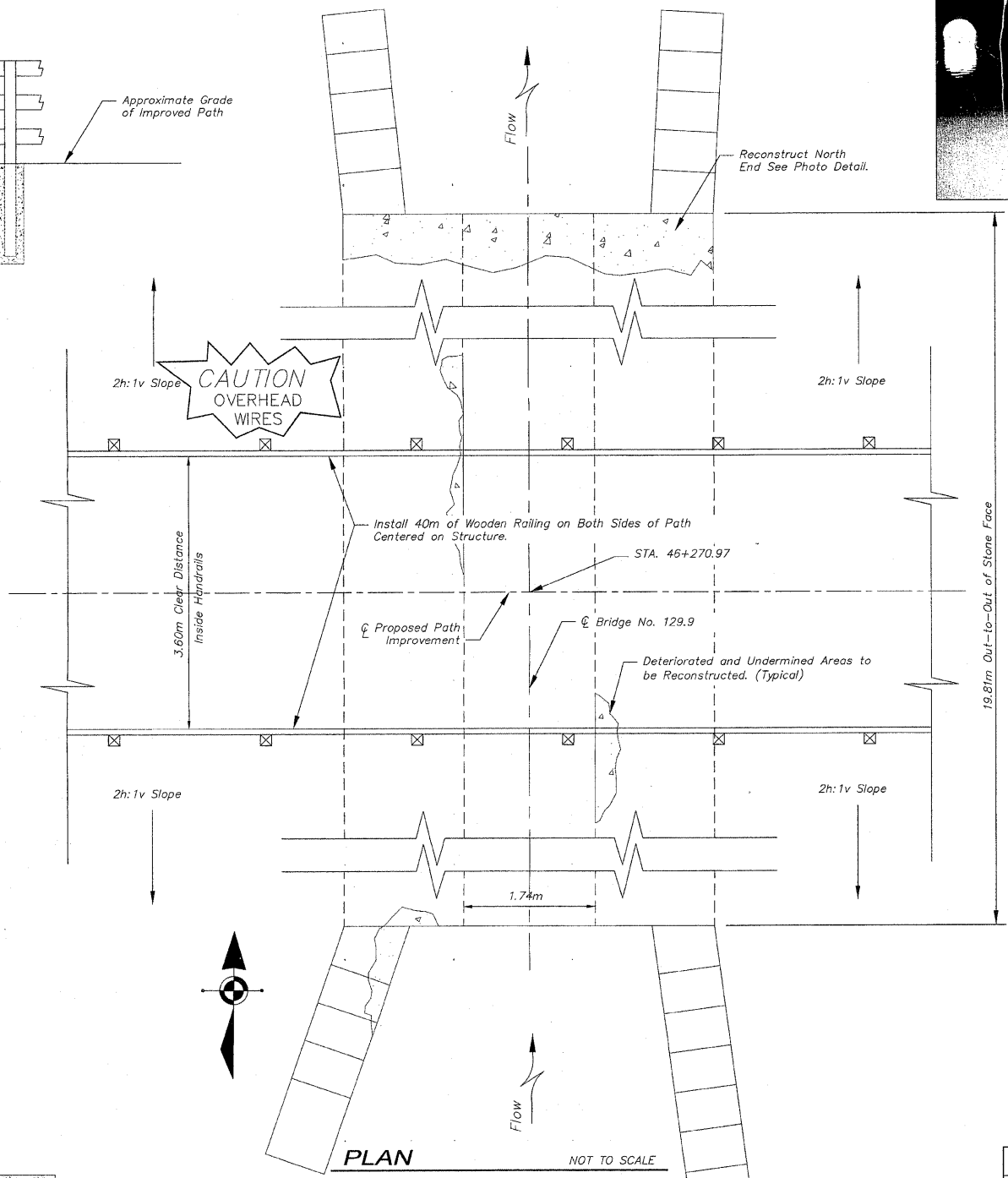
Southwest Corner of Stone Masonry Arch



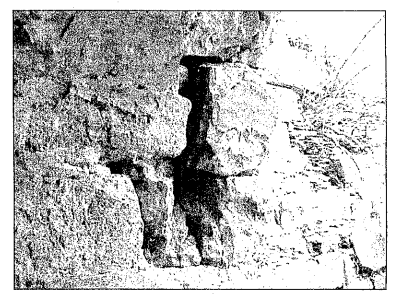
Stone Masonry Arch Structure (Looking North/Downstream)



Stone Masonry Arch Structure (Looking South/Upstream)



Northwest Corner of Stone Masonry Arch
Reconstruct Areas to Restore Original Arch Dimensions.



BRIDGE 129.9 NOTES

1. PLAN DIMENSIONS AND DETAILS RELATIVE TO THE EXISTING STRUCTURES HAVE BEEN TAKEN FROM FIELD SURVEYS AND ARE SUBJECT TO NOMINAL CONSTRUCTION VARIATIONS. IT SHALL BE THE CONTRACTOR'S RESPONSIBILITY TO VERIFY SUCH DIMENSIONS AND DETAILS IN THE FIELD AND MAKE NECESSARY APPROVED ADJUSTMENTS PRIOR TO CONSTRUCTION OR ORDERING OF MATERIALS. SUCH VARIATIONS SHALL NOT BE CAUSE FOR ADDITIONAL COMPENSATION FOR A CHANGE IN THE SCOPE OF WORK. HOWEVER, THE CONTRACTOR WILL BE PAID FOR THE QUANTITY ACTUALLY FURNISHED AND INSTALLED AT THE CONTRACT UNIT PRICE FOR THE SPECIFIC PAY ITEM.
2. STONE MASONRY ARCH BRIDGE SHALL BE RECONSTRUCTED ABOVE AND BELOW THE NORMAL WATERLINE AS REQUIRED TO RESTORE THE WATERWAY OPENING TO THE ORIGINAL DIMENSIONS IN ACCORDANCE WITH THE SPECIAL PROVISIONS.
3. RECONSTRUCTION OF THE ARCH BRIDGE SHALL BE PERFORMED BY A QUALIFIED STONE MASONRY CONTRACTOR. ALL WORK SHALL BE IN ACCORDANCE WITH THE IDOT "STANDARD SPECIFICATIONS FOR ROAD AND BRIDGE CONSTRUCTION", LATEST EDITION AND THE CONTRACT SPECIAL PROVISIONS. ALL MATERIAL AND LABOR REQUIRED TO COMPLETELY RESTORE THE ARCH BRIDGE WILL BE MEASURED AND PAID FOR AT THE CONTRACT UNIT PRICE FOR PERFORMANCE BASED SPECIFICATION, CULVERT RESTORATION.
4. CONTRACTOR SHALL BE RESPONSIBLE FOR DETERMINING THE NECESSARY STAGING AND TEMPORARY SHORING TO COMPLETE THE WORK WHILE ASSURING THE SAFETY AND INTEGRITY OF THE ARCH STRUCTURE.
5. CONTRACTOR SHALL PROVIDE THE NECESSARY MATERIAL AND EQUIPMENT TO DEWATER THE WORK AREA SUCH THAT ALL CONSTRUCTION CAN BE PERFORMED IN DRY CONDITIONS. NO MASONRY CONSTRUCTION WILL BE ALLOWED TO BE PLACED IN FLOWING WATER. REMOVAL AND DISPOSAL OF UNSALVAGEABLE MATERIAL SHALL CONFORM TO THE REQUIREMENT OF SECTION 202.03 OF THE IDOT STANDARD SPECIFICATIONS.

DESIGN LOADING

H-10
Design Fill Height > 610mm

DESIGN STRESSES

$f'_c = 35 \text{ MPa}$ (PRECAST)
 $f'_c = 24 \text{ MPa}$ (FIELD POURED)
 Reinforcing $f_y = 450 \text{ MPa}$ (WELDED WIRE FABRIC)
 Reinforcing $f_y = 420 \text{ MPa}$ (FIELD POURED)
 Fasteners $f_y = 248 \text{ MPa}$

DESIGN SPECIFICATIONS

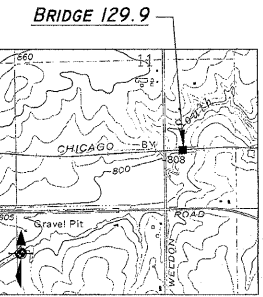
2002 AASHTO Standard Specifications - 17th Edition

SEISMIC DATA

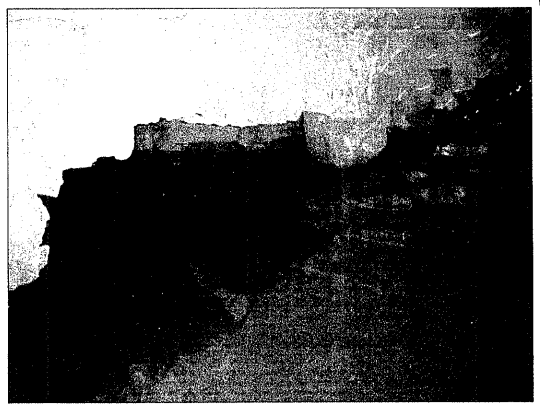
Seismic Performance Category (SPC) = A
 Bedrock Acceleration Coefficient (4) = 3.25%
 Site Coefficient(s) = 1.0

BILL OF MATERIAL - BRIDGE 129.9

ITEM	UNIT	QUANTITY
PERFORMANCE BASED SPECIFICATION, CULVERT RESTORATION	LS	1



BRIDGE 129.9
LOCATION SKETCH



Interior East Wall Section Towards South End (Looking South/Upstream)
Restore Deteriorated Areas to Restore Original Arch Dimensions.

FOR INFORMATION ONLY

GENERAL PLAN & ELEVATION OVER A TRIBUTARY DITCH TO THE PECATONICA RIVER SECTION 94-00267-00-BT WINNEBAGO COUNTY STATION 46+270.97

REVISIONS		
NO.	ITEM	DATE
2	IDOT Review Comments and Internal Review	1/28/2009

PLOTTING SCALE: 1 : 1
 DRAWN BY: REK/CDS
 CHECKED BY:
 DATE: DECEMBER, 2008

McClure
 Engineering Associates, Inc.
 7282 Argus Drive Rockford, Illinois 61107-5837
 (815) 398-2332 FAX (815) 398-2496
 Design Firm License: Illinois 184-000816
 Copyright 2009 By McClure Engineering Associates, Inc.

BRIDGE NO. 129.9 STA. 46+270.97
PECATONICA PRAIRIE PATH Contract 85443
 WINNEBAGO COUNTY HIGHWAY DEPARTMENT SECTION 94-00267-00-BT
 FILE NAME: G:\surveys\PECPATH\1ST RELEASE\98-037 g129.9.dwg JOB NUMBER: 04-28-98-037

SHEET NO.
92
 OF
98