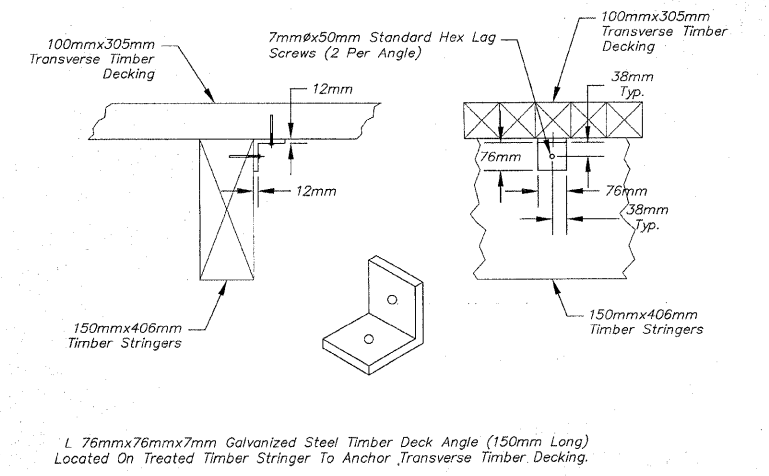
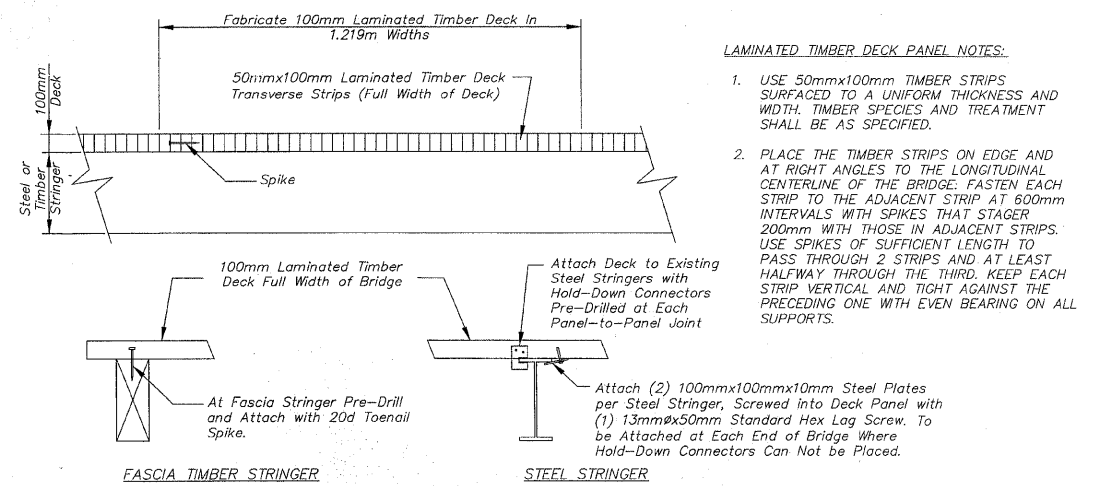


**WOOD RAIL DETAIL** NOT TO SCALE

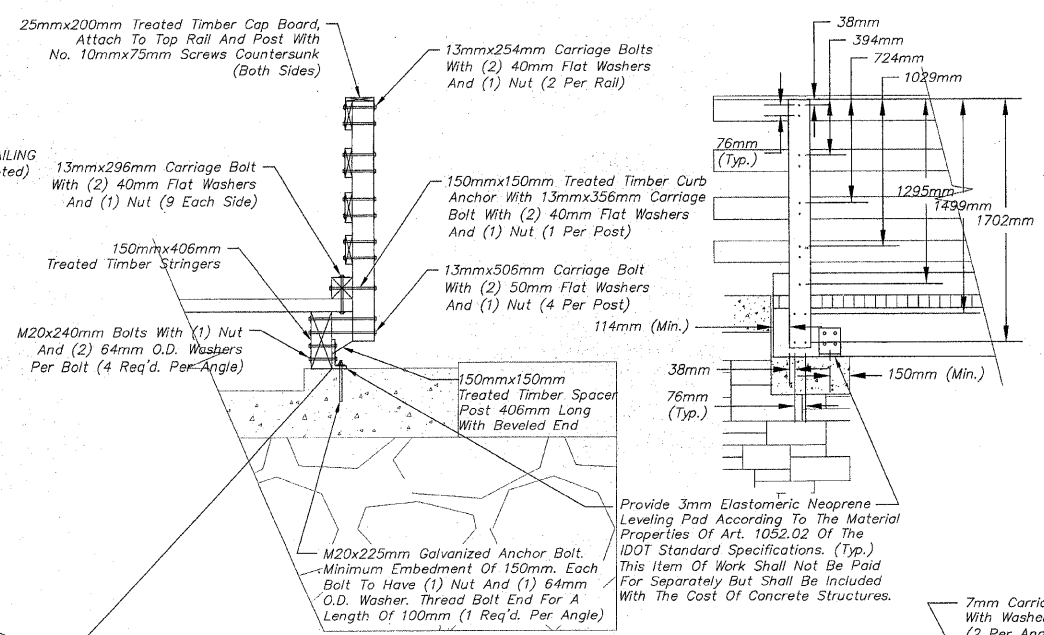


**TIMBER DECK ANGLE** NOT TO SCALE

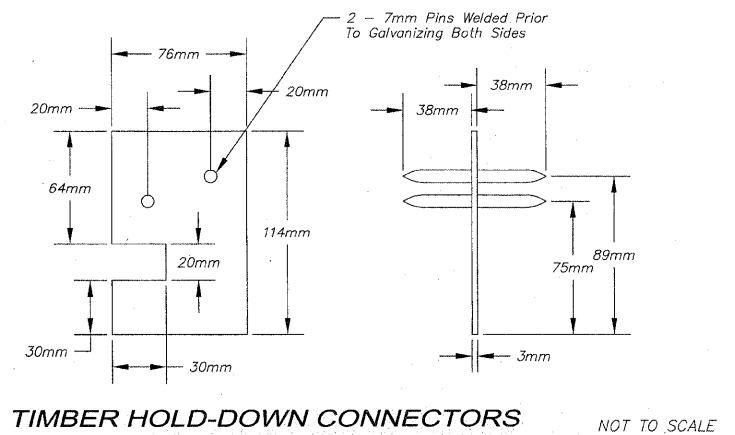


**LAMINATED TIMBER DECK PANEL** NOT TO SCALE

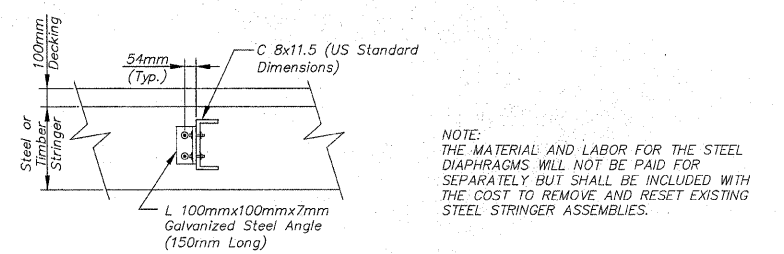
- LAMINATED TIMBER DECK PANEL NOTES:**
- USE 50mmx100mm TIMBER STRIPS SURFACED TO A UNIFORM THICKNESS AND WIDTH. TIMBER SPECIES AND TREATMENT SHALL BE AS SPECIFIED.
  - PLACE THE TIMBER STRIPS ON EDGE AND AT RIGHT ANGLES TO THE LONGITUDINAL CENTERLINE OF THE BRIDGE. FASTEN EACH STRIP TO THE ADJACENT STRIP AT 600mm INTERVALS WITH SPIKES THAT STAGER 200mm WITH THOSE IN ADJACENT STRIPS. USE SPIKES OF SUFFICIENT LENGTH TO PASS THROUGH 2 STRIPS AND AT LEAST HALF WAY THROUGH THE THIRD. KEEP EACH STRIP VERTICAL AND TIGHT AGAINST THE PRECEDING ONE WITH EVEN BEARING ON ALL SUPPORTS.



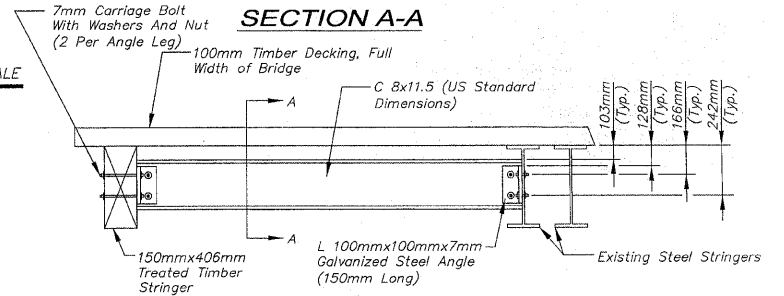
**BRIDGE RAIL & TIMBER STRINGER BEARING DETAILS** NOT TO SCALE



**TIMBER HOLD-DOWN CONNECTORS** NOT TO SCALE

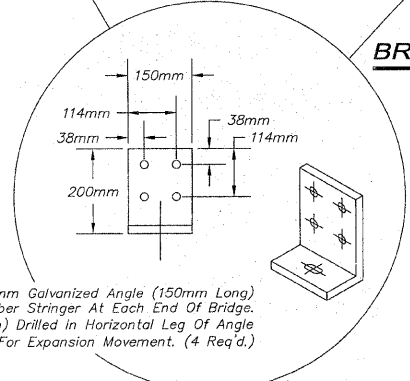


NOTE: THE MATERIAL AND LABOR FOR THE STEEL DIAPHRAGMS WILL NOT BE PAID FOR SEPARATELY BUT SHALL BE INCLUDED WITH THE COST TO REMOVE AND RESET EXISTING STEEL STRINGER ASSEMBLIES.



**ELEVATION VIEW**

**STEEL DIAPHRAGM DETAIL** NOT TO SCALE



REVISIONS		
NO.	ITEM	DATE
2	IDOT Review Comments and Internal Review	1/28/09

PLOTTING SCALE: 1 : 1  
DRAWN BY: KTS/PLH/JRC/REK/CDS  
CHECKED BY:  
DATE: DECEMBER, 2008

**McClure**  
Engineering Associates, Inc.  
7282 Argus Drive  
Rockford, Illinois 61107-5837  
(815) 398-2332 FAX (815) 398-2496  
Design Firm License: Illinois 184-000816  
Copyright 2009 By McClure Engineering Associates, Inc.

**BRIDGE DETAILS**  
PECATONICA PRAIRIE PATH Contract 85443  
WINNEBAGO COUNTY HIGHWAY DEPARTMENT SECTION 94-00267-00-BT  
JOB NUMBER: 04-28-98-037

SHEET NO.  
96  
OF  
98